



# Electronic Service Manuals

This electronic document is provided as a service to our customers. We do not create the contents of the information contained in this document. Should you have detailed questions pertaining to the information contained in this document, you may contact Michco, or the manufacturer which provided the original information in this electronic deliverable. Michco's only part in this electronic deliverable was the electronic assembly process.

You may contact Michco through the following methods:  
Phone (517) 484-9312 or (800) 331-3339 MI, OH, IN only  
2011 N. High St. -- Lansing, Michigan -- 48906  
Fax: (517) 484-9836  
Email: [CustServ@Michco.com](mailto:CustServ@Michco.com)  
Web site: [www.Michco.Com](http://www.Michco.Com)  
Parts Web site: [www.FloorMachineParts.Com](http://www.FloorMachineParts.Com)

Order Parts on Line at:  
**[www.FloorMachineParts.Com](http://www.FloorMachineParts.Com)**

Directly to Parts & Service:  
By Email: **[Shop@Michco.com](mailto:Shop@Michco.com)**  
By Fax: (517) 702-2041  
By Voice: Use numbers above.

**Serving the Cleaning Industry Since 1922**

Notice: All copyrighted material remains property of original owners, all trademarks are property of respective owners. Manuals are subject to Manufacturer's reproduction limitations. Originals or reproductions were provided by manufacturers through a request. We make no warranty as to the correctness of information provided in this document and you assume all risk.

# Carpetwin™ 14XP

---



## **PARTS LIST**

**Advance MODELS 56323702(120V/Obsolete)  
56323775(100V/Obsolete)**



**Nilfisk  
Advance**

*setting standards*

5/91 revised 11/00 FORM NO. 56042248

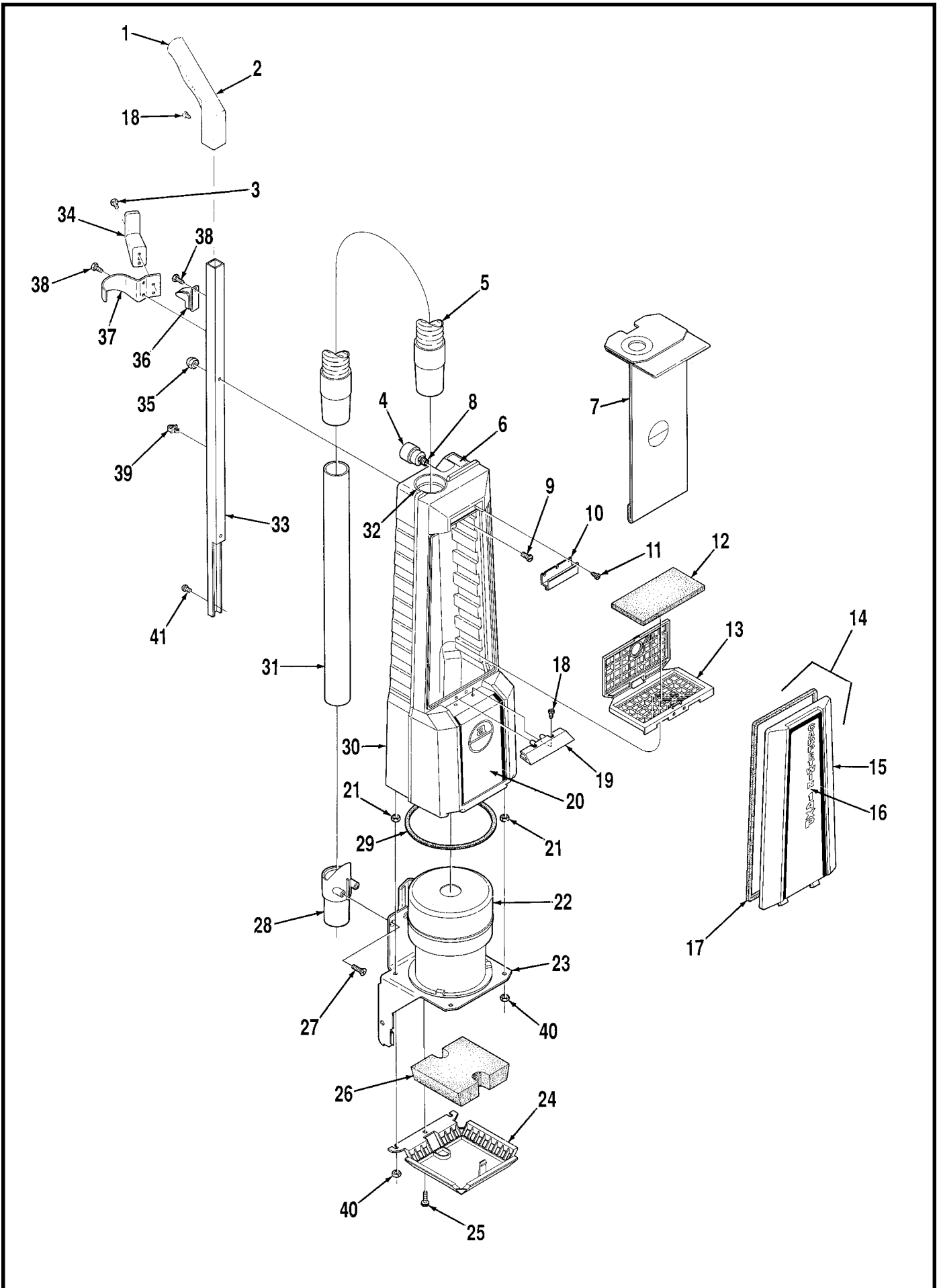
# TABLE OF CONTENTS

<u>DESCRIPTION</u>	<u>PAGE</u>
Upper Housing .....	1-2
Vacuum Motor Assembly .....	3-4
Base Assembly .....	5-6
Wiring Diagrams .....	7-8

## WHEN ORDERING PARTS

- \* Use the 8 digit numbers from the "Ref. No." columns in this parts list.
- \* Specify the model and serial number of the machine.
- \* Use the space below to record the model and serial number for future reference.

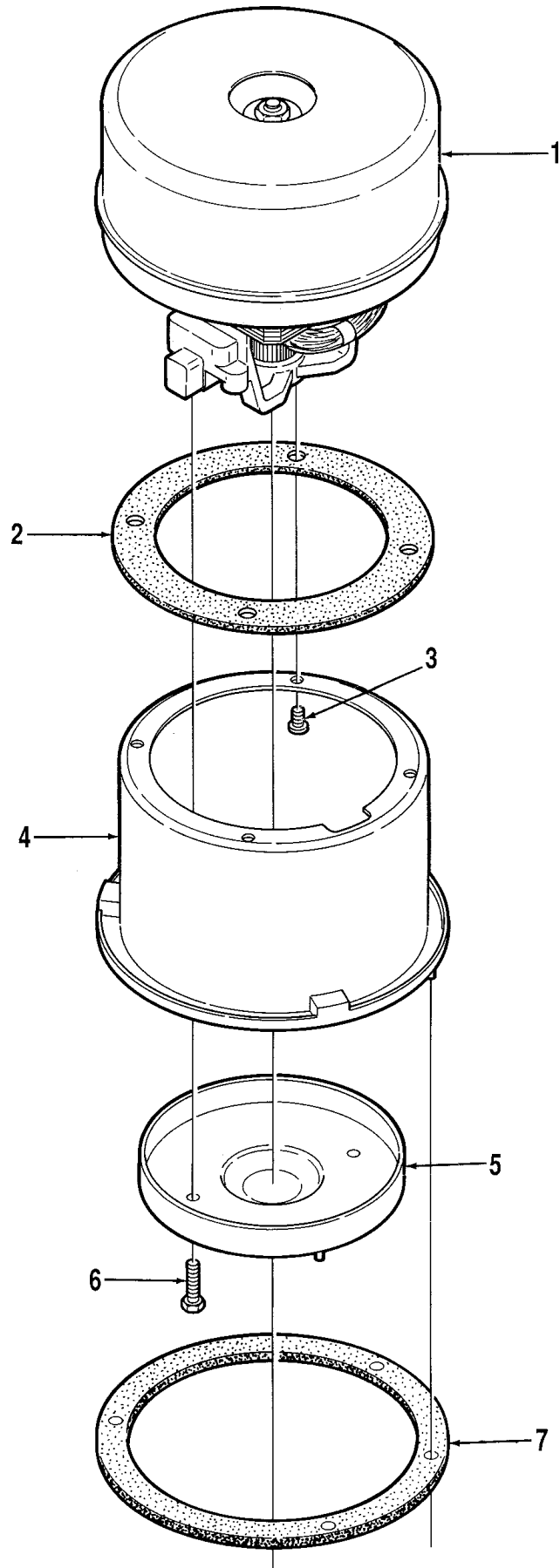
Model \_\_\_\_\_ Serial No. \_\_\_\_\_



## UPPER HOUSING

Item	Ref. No.	Qty	Description
	56323221	1	Upper Housing Assembly (#1-21, 30-41)
1	56706224	1	Plug
2	56706220	1	Handle Grip
3		2	#10-24 x 1/4 Screw
4	56323170	1	Indicator
5	56323167	1	Vacuum Hose
6	56015069	1	Decal, Full Bag
7	56323153	1	Paper Filter Bag (pkg of 6)
*	56323195	1	Cloth Bag
*	56320676	1	Clip for Cloth Bag
*	56323251	1	Bio-Bag™ (pkg of 6) (optional accessory, not included)
8	56750746	1	Nipple
9		2	1/4-20 x 1-1/4 Screw
10	56323143	1	Latch <b>TSB 561</b>
11	56900484	3	Screw
12	56323158	1	Internal Filter
13	56323161	1	Internal Filter Housing
14	56323205	1	Cover Assembly (#15-17) <b>TSB 562</b>
15	56323151	1	Cover
16	56014976	1	Decal, Carpetwin 14XP
17	56323165	1	Gasket
18		3	#10-24 x 1/2 Screw
*		2	#10-24 Whiz Nut
19	56323146	1	Stop
20	56014945	1	Decal, Housing
21		4	5/16-18 Nut
*		4	5/16-18 x 1 Bolt
*		4	5/16 Washer
*	56323013	4	Washer
22			SEE PAGE 3
23	56323186	1	14" Yoke <b>TSB 566</b>
24	56323160	1	Exhaust Filter Retainer
25		3	#10-24 x 3/4 Screw
26	56323275	1	Exhaust Filter
27	56900287	2	Screw
28	56323148	1	Wand Holder
29	56323157	1	Yoke Gasket
30	56323139	1	Housing
31	56323141	1	Wand
32	56323142	1	Bag Fill Tube
33	56100029	1	Handle Tube
34	56323074	1	Cord Hook
35		2	1/4-20 Acorn Nut
36	56706287	1	Clip
37	56323171	1	Hose Bracket
38		3	#10-24 x 3/8 Screw
39	56323179	2	Clip
40		4	5/16-18 Jam Nut
41		1	1/4-20 x 5/16 Screw

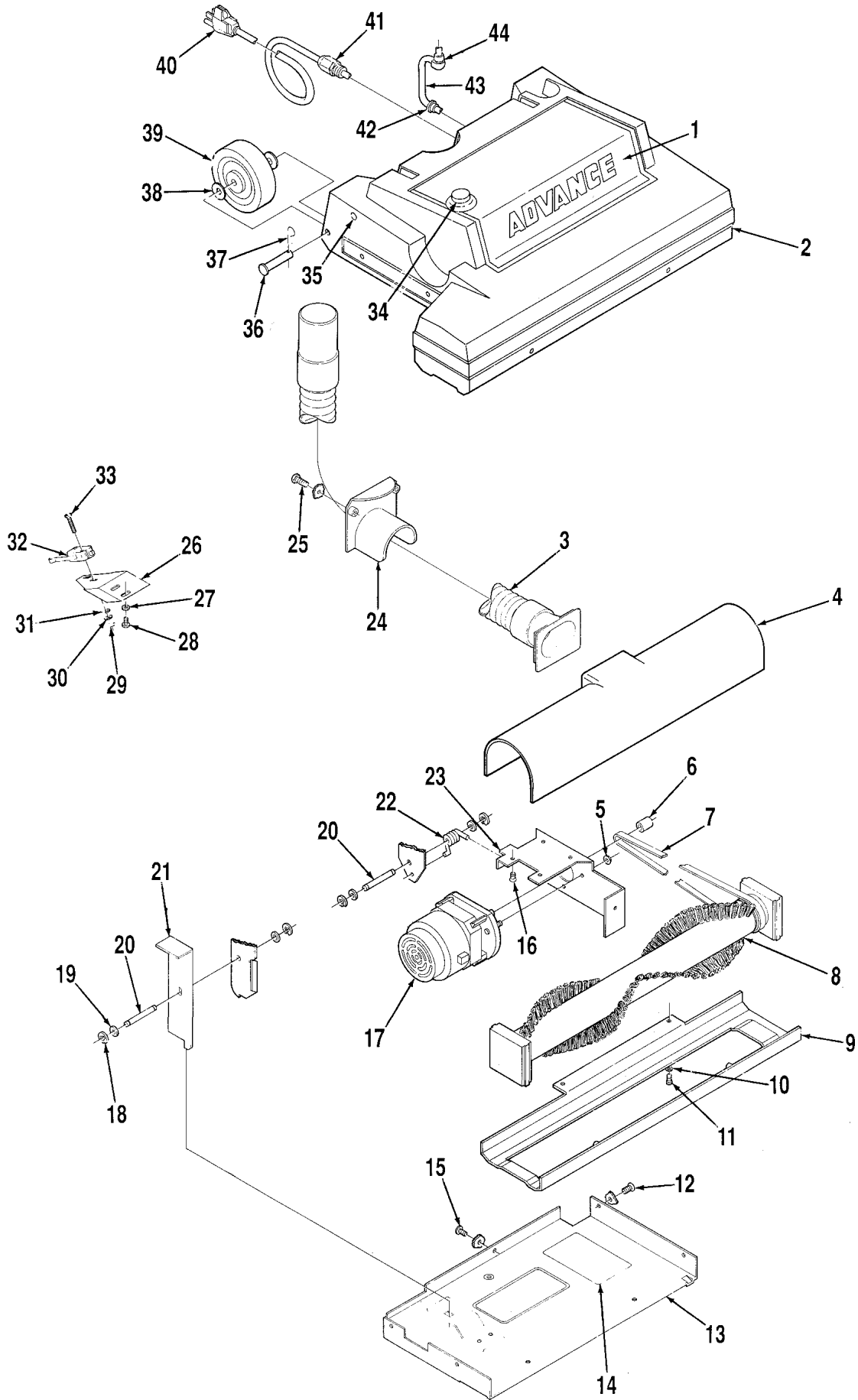
\* = Not Shown



## VACUUM MOTOR ASSEMBLY

Item	Ref. No.	Qty	Description
1	56323215	1	Vacuum Motor 100V, 120V
*	56203518	1	Carbon Brush Set for 56323215
2	56209325	1	Motor Gasket
3		4	#10-24 x 3/8 Screw
4	56323173	1	Vacuum Motor Cup
5	56323044	1	Inner Baffle
6		2	#10-24 x 7/8 Screw
7	56323164	1	Cup Gasket
*	56250150	1	Ground Wire

\* = Not Shown



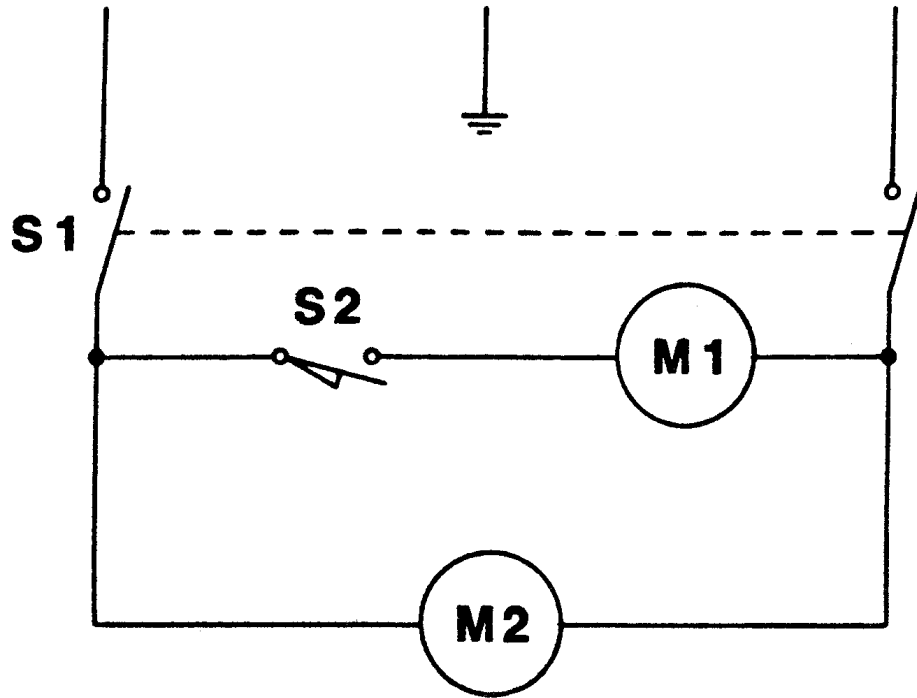
## BASE ASSEMBLY

Item	Ref. No.	Qty	Description
1	56015072	1	Decal, Advance
2	56323191	1	Base Housing
3	56323216	1	Hose
4	56323192	1	Brush Insert
5		5	#10-24 Nut
6	56323154	1	Pulley
7	56323538	1	Belt
8	56323530	1	Brush Assembly
**	56323589	1	Left Bearing Block
**	56323588	1	Right Bearing Block
9	56323556	1	Shoe
10		2	#8 Washer
11	56706097	2	Screw
12	56900267	4	Screw
13	56323753	1	Bottom Pan
14	56015047	1	Decal, Wiring 120V
	56015301	1	Decal, Wiring 120V (Canadian only)
	56015097	1	Decal, Wiring 100V
15	56900268	1	Screw
16		5	#10-24 x 1/2 Screw
17	56323544	1	Brush Motor 120V
	56323551	1	Brush Motor 100V
*	56323097	1	Carbon Brush Set for Above Motors
*	56228051	2	Bearing for Above Motors
18	56321427	1	Retaining Ring
19		4	3/8 Washer
20	56402995	2	Pivot Pin
21	56323727	1	Handle Release
22	56323539	1	Torsion Spring
23	56323719	1	Motor Mount
24	56323188	1	Baffle
25	56900238	2	Screw
26	56323187	1	Switch Bracket
27		2	#10 Washer
28		2	#10-24 x 3/8 Screw
29		2	#4-40 Nut
30		2	#4 Lock Washer
31		2	#4 Washer
32	56262027	1	Switch <b>TSB 729</b>
33		2	#4-40 x 3/4 Screw
34	56323741	1	Switch
35	56493149	2	Plug
36	56329558	2	Pin
37	56321406	2	Cotter Pin
38	56151041	4	Spring Washer
39	56323722	2	Wheel
40	56323209	1	Power Cord 120V
	56323225	1	Power Cord 100V
41	56323135	1	Strain Relief
*	56171094	1	Lock Nut
42	56163015	1	Strain Relief
43	56323210	1	Cord 100V, 120V
44	56185504	1	Strain Relief
*	56014369	1	Decal, Warning (on yoke)
*	56290425	1	Circuit Breaker 1.5A (Canadian only)

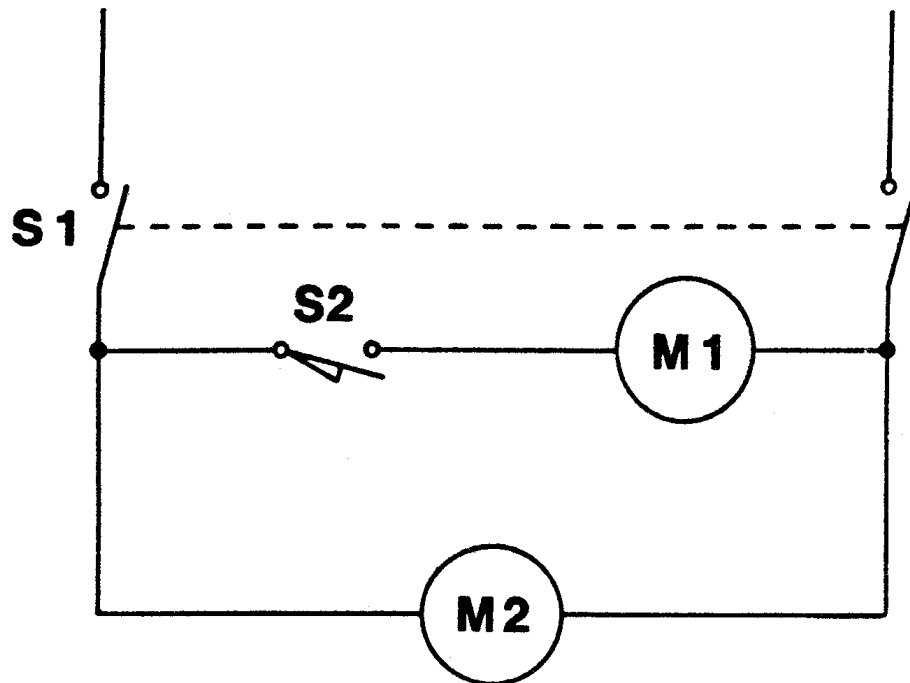
\* = Not Shown

\*\* = Included in Brush Assembly 56323082

120V



100V



## 120V WIRING DIAGRAM

Item	Ref. No.	Qty	Description
S1	56323741	1	Main Switch
S2	56262027	1	Brush Motor Switch <b>TSB 729</b>
M1	56323544	1	Brush Motor 120V
M2	56323215	1	Vacuum Motor

## 100V WIRING DIAGRAM

Item	Ref. No.	Qty	Description
S1	56323741	1	Main Switch
S2	56262027	1	Brush Motor Switch <b>TSB 729</b>
M1	56323551	1	Brush Motor 100V
M2	56323215	1	Vacuum Motor