



## Electronic Service Manuals

This electronic document is provided as a service to our customers. We do not create the contents of the information contained in this document. Should you have detailed questions pertaining to the information contained in this document, you may contact Michco, or the manufacturer which provided the original information in this electronic deliverable. Michco's only part in this electronic deliverable was the electronic assembly process.

You may contact Michco through the following methods:  
Phone (517) 484-9312 or (800) 331-3339 MI, OH, IN only  
2011 N. High St. -- Lansing, Michigan -- 48906  
Fax: (517) 484-9836  
Email: [CustServ@Michco.com](mailto:CustServ@Michco.com)  
Web site: [www.Michco.Com](http://www.Michco.Com)  
Parts Web site: [www.FloorMachineParts.Com](http://www.FloorMachineParts.Com)

Order Parts on Line at:  
**[www.FloorMachineParts.Com](http://www.FloorMachineParts.Com)**

Directly to Parts & Service:  
By Email: **[Shop@Michco.com](mailto:Shop@Michco.com)**  
By Fax: (517) 702-2041  
By Voice: Use numbers above.

**Serving the Cleaning Industry Since 1922**

Notice: All copyrighted material remains property of original owners, all trademarks are property of respective owners. Manuals are subject to Manufacturer's reproduction limitations. Originals or reproductions were provided by manufacturers through a request. We make no warranty as to the correctness of information provided in this document and you assume all risk.

ADVANCE

# PARTS LIST

---

**Carpetwin™ 16XP**  
**Model 323293**

---

This parts list is for machines after serial number 1077338



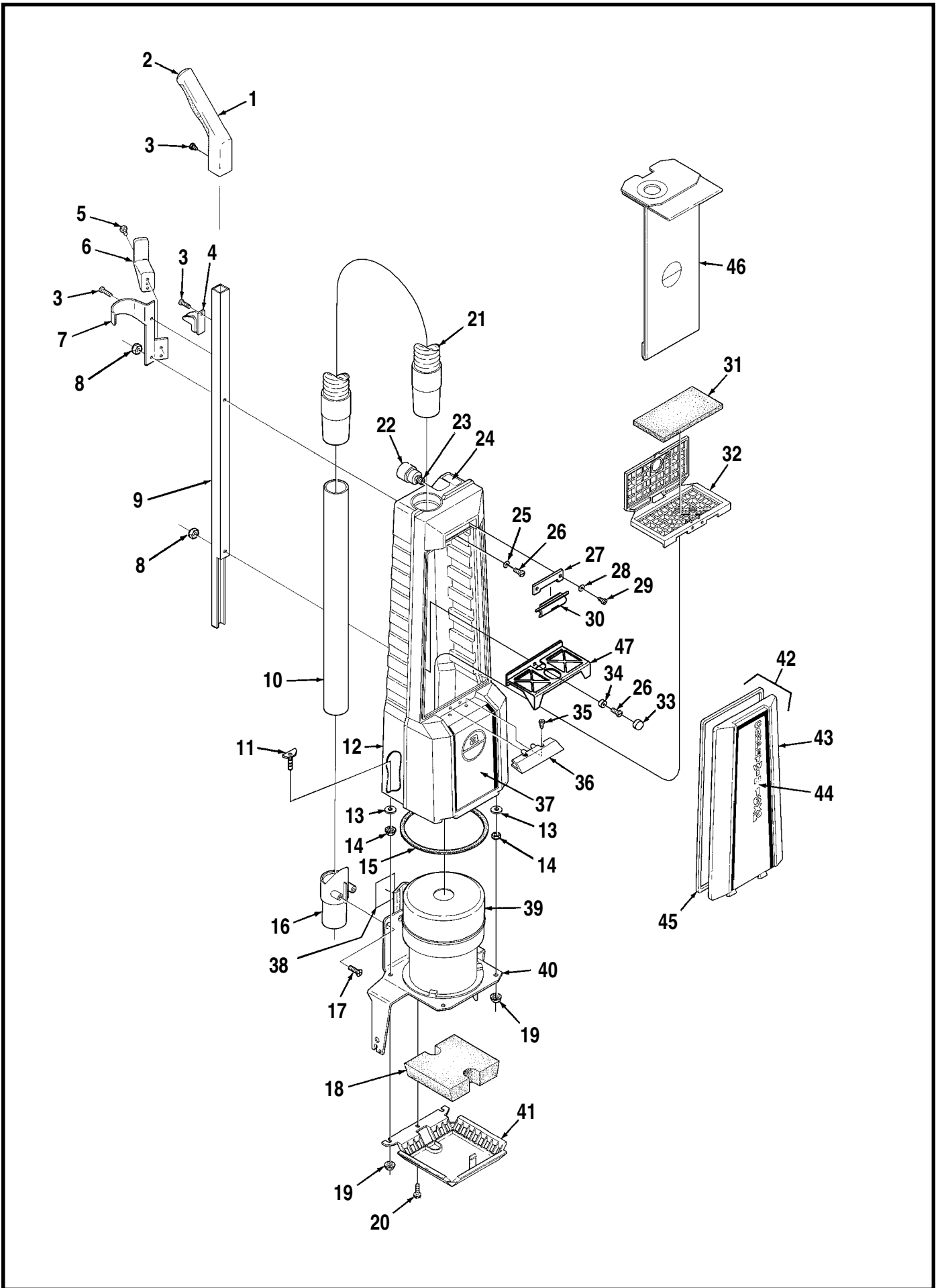
## TABLE OF CONTENTS

Upper Handle .....	1-2
Vacuum Motor Assembly .....	3-4
Base Assembly .....	5-6
Wiring Diagram .....	7-8

### WHEN ORDERING PARTS

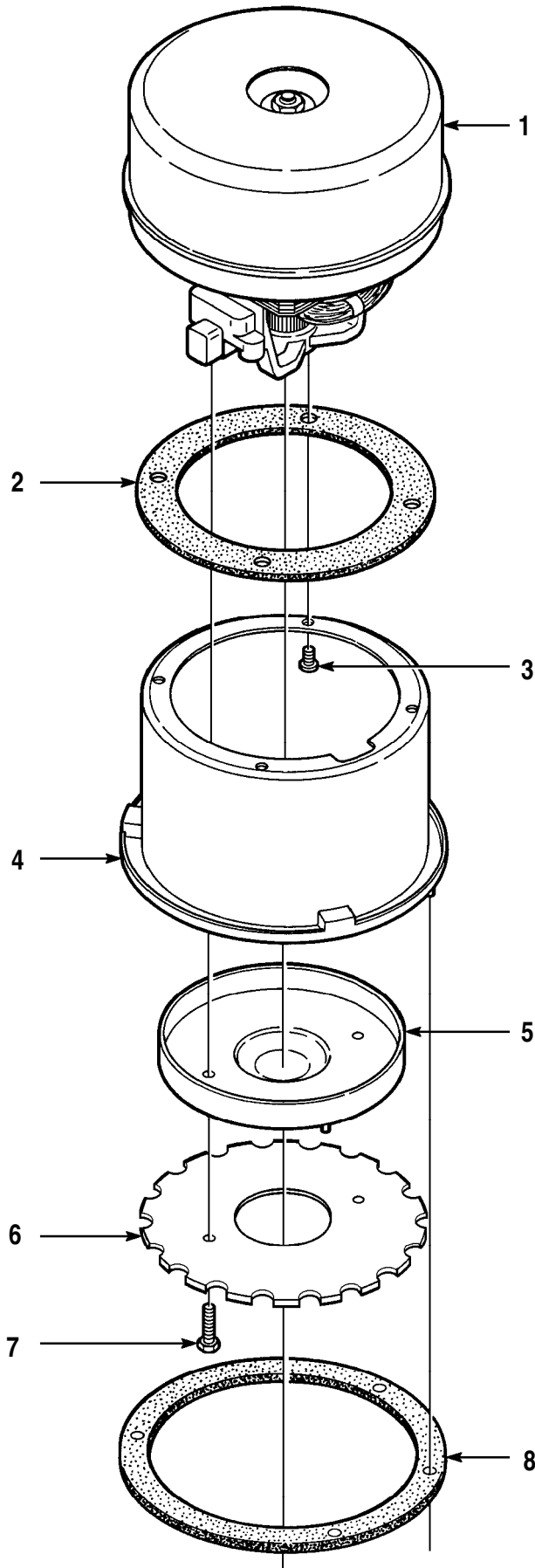
- Use the 6 digit numbers from the "Part No." columns in this parts list.
- Specify the model and serial number of the machine.
- Use the space below to record the model and serial number for future reference.

Model \_\_\_\_\_ Serial Number \_\_\_\_\_



## UPPER HOUSING

Item	Part No.	Qty	Description	Item	Part No.	Qty	Description
	323174	1	Upper Housing Assembly	42	323152	1	Cover Assembly (#43-45)
1	706220	1	Handle Grip	43	323151	1	Cover
2	706224	1	Plug	44	014947	1	Decal, Carpetwin 16XP
3	002508	3	Scr, Pan Phil HP5 10-24 x .50	45	323165	1	Gasket
4	706287	1	Clip	46	323153	1	Paper Filter Bag (pkg of 6)
5	002532	2	Scr, HWH HP5 10-24 x .25	*	323195	1	Cloth Bag
6	323074	1	Cord Hook	*	320676	1	Clip for Cloth Bag
7	323171	1	Hose Bracket	*	323251	1	Bio-Bag™ (pkg of 6) (optional, not included)
8	002491	2	Nut, Hex Nyl Loc 1/4-20	47	323290	1	Stand-off, Bag
9	100029	1	Handle Tube				
10	323141	1	Wand				
11	323258	4	5/16-18 Stud				* = Not Shown
12	323145	1	Housing <b>TSB 697, G-1</b>				
13	323244	4	Wsh, Flt Urethane				
14	002826	4	Nut, Nyl Loc Thin 5/16-18				
15	323157	1	Yoke Gasket				
16	323148	1	Wand Holder				
17	009172	2	Scr, Flt Phil Type A-B 1/4-14 x .62				
18	323275	1	Exhaust Filter				
19	002826	4	Nut, Hex Nyl Loc Thin 5/16-18				
20	003028	3	Scr, Hex Loc 10-24 x 1.00				
21	323167	1	Vacuum Hose				
22	323170	1	Indicator				
23	750746	1	Nipple				
24	015069	1	Decal, Full Bag				
25	002098	4	Wsh, 1/4 SAE				
26	002430	2	Scr, Pan Phil 1/4-20 x 1.25				
27	323254	1	Latch Housing				
28	002006	2	Wsh, Flt #6				
29	003066	2	Scr, Pan Phil Type B #8 x .38				
30	323255	1	Latch				
31	323158	1	Internal Filter				
32	323161	1	Internal Filter Housing				
33	323262	1	Screw Cover				
34	323261	1	Screw Base				
35	001993	2	Scr, Pan Phil 10-24 x .50				
*	002768	2	Nut, Hex Nyl Loc 10-24				
36	323146	1	Stop				
37	014945	1	Decal, Housing				
38	014369	1	Decal, Warning				
39	323172	1	Vacuum Motor Assembly - SEE PAGE 3				
40	323140	1	16" Yoke				
41	323160	1	Exhaust Filter Retainer				

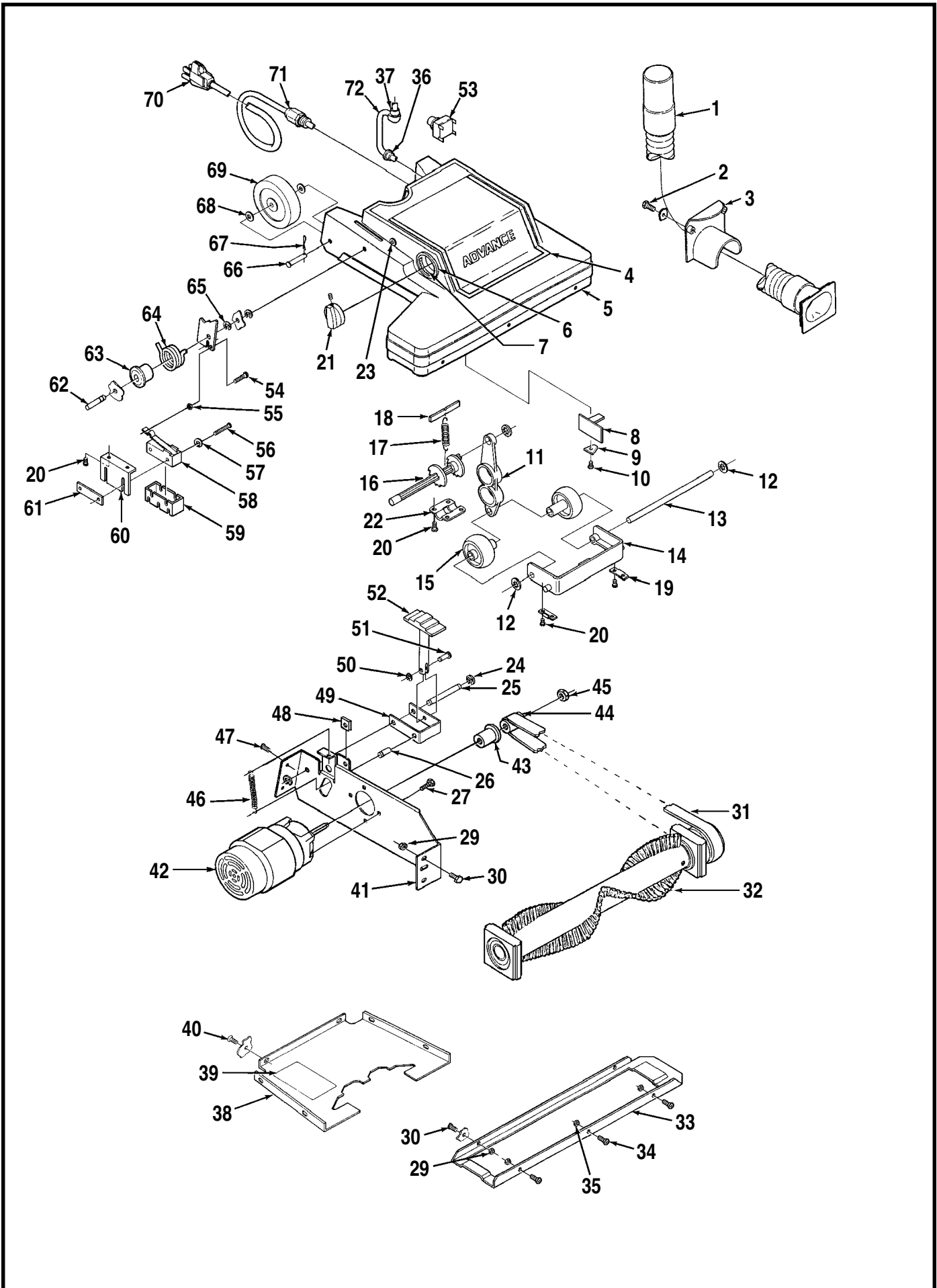


## VACUUM MOTOR ASSEMBLY

Item	Part No.	Qty	Description
1	323177	1	Vacuum Motor 120V
2	209325	1	Motor Gasket
3	009030	4	Screw, Pan Phil HP5 10-24 x .38
4	323173	1	Vacuum Motor Cup
5	323044	1	Inner Baffle
6	323009	1	Outer Baffle <b>NOTE</b>
7	009038	2	Screw, Hex HP5 10-24 x .88
*	001954	2	Washer Flat #10
8	323064	1	Cup Gasket

\* = Not Shown

**NOTE:** Install the lip on outer baffle (#6) turned away from the motor.



# BASE ASSEMBLY

Item	Part No.	Qty	Description	Item	Part No.	Qty	Description
1	323168	1	Hose	42	323347	1	Brush Motor Assembly 120V
2	009120	2	Scr, Pan Phil SS B 1/4-14 x .62	*	323629	2	Carbon Brush
3	323176	1	Baffle	43	323280	1	Motor Spacer
	323266	1	Repl Shroud Assy (#4-7)	44	323279	1	Motor Pulley
4	015071	1	Decal, Advance	45	002719	1	Nut, Hex M6-1.00
5	323169	1	Base Housing 120V	46	321087	1	Spring
6	325410	1	Knob Insert	47	009030	2	Scr, Pan Phil Thd Form 10-24 x .38
7	021106	1	Decal, Knob	48	321320	1	Clamp Nut
8	323348	1	Circuit Board <b>TSB 656, G-3</b>	49	328598	1	Latch
9	323595	1	Retainer Clip	50	003267	1	Retaining Ring
10	003196	1	Scr, Pan Phil Plas 6-18 x .62	51	321068	1	Pin
	323102	1	Ratchet Assembly (#11-18)	52	323036	1	Pedal
11	323038	1	Link	53	323741	1	Main Switch
12	325227	3	Nut	54	002146	1	Scr, Pan Phil 8-32 x .62
13	325229	1	Pivot Pin	55	002865	1	Nut, Hex Nyl Loc Thin 8-32
14	323028	1	Yoke	56	003009	2	Scr, Hex 6-32 x 1.00
15	323025	2	Wheel	57	002006	2	Wsh, Flt SAE #6
16	323027	1	Ratchet	58	323271	1	Brush Motor Switch
17	320484	1	Spring	59	323272	1	Terminal Cover
18	323035	1	Ratchet Catch	60	321615	1	Bracket
19	325213	2	Clamp	61	376015	1	Nut Plate
20	009129	10	Scr, Pan Phil Type B 6 x .38	62	323089	2	Pivot Pin
21	324502	1	Knob	63	323124	1	Bushing
22	325225	1	Ratchet Retainer	64	323123	1	Torsion Spring
23	323055	2	Stop Bushing	65	003262	4	Retaining Ring
*	002032	2	Scr, Soc 1/4-20 x .62	66	321404	2	Axle Pin
*	002708	1	Nut, Hex Nyl Loc 1/4-20	67	003222	2	Cotter Pin
24	003268	2	Retaining Ring	68	009024	4	Wsh, Bowed
25	323353	1	Pin	69	327530	2	Wheel
26	328642	1	Groove Pin	70	323209	1	Cord Set 120V
27	009193	4	Scr, Hex Loc M6-1 x 10mm	71	171094	1	Lock Nut * for strain relief
28			<b>Omitted Intentionally</b>	72	323210	1	Cord 120V
29	002768	5	Nut, Hex Nyl Loc 10-24	*	002124	1	Scr, Pan Phil 10-24 x .62
30	002503	4	Scr, Hex 10-24 x .50				
31	323284	1	Belt				
32	323285	1	Brush Assembly				
**	003256	1	Retaining Ring				
**	320140	2	Bearing Block				
**	323278	1	Brush Pulley				
**	372773	1	Bearing				
33	325530	1	Shoe				
34	002396	3	Scr, Flt Phil 8-32 x .50				
35	002808	4	Nut, Hex Nyl Loc 8-32				
36	163015	1	Strain Relief				
37	754199	1	Strain Relief				
38	323292	1	Base Cover				
39	015763	1	Decal, Wiring 120V				
40	009133	5	Scr, Flt Phil HP5 Loc 10-24 x .50				
41	323288	1	Motor Bracket				

\* = Not Shown  
 \*\* = Included in Brush Assembly 323285



# 120V WIRING DIAGRAM

Item	Part No.	Qty	Description
A	323348	1	Circuit Board <b>TSB 656, G-3</b>
S1	323741	1	Main Switch
S2	323271	1	Brush Motor Switch
M1	323347	1	Brush Motor
M2	323177	1	Vacuum Motor
X1			Motor Mount Ground
X2			Yoke Ground
X3			Cover Ground