



## Electronic Service Manuals

This electronic document is provided as a service to our customers. We do not create the contents of the information contained in this document. Should you have detailed questions pertaining to the information contained in this document, you may contact Michco, or the manufacturer which provided the original information in this electronic deliverable. Michco's only part in this electronic deliverable was the electronic assembly process.

You may contact Michco through the following methods:  
Phone (517) 484-9312 or (800) 331-3339 MI, OH, IN only  
2011 N. High St. -- Lansing, Michigan -- 48906  
Fax: (517) 484-9836  
Email: [CustServ@Michco.com](mailto:CustServ@Michco.com)  
Web site: [www.Michco.Com](http://www.Michco.Com)  
Parts Web site: [www.FloorMachineParts.Com](http://www.FloorMachineParts.Com)

Order Parts on Line at:  
**[www.FloorMachineParts.Com](http://www.FloorMachineParts.Com)**

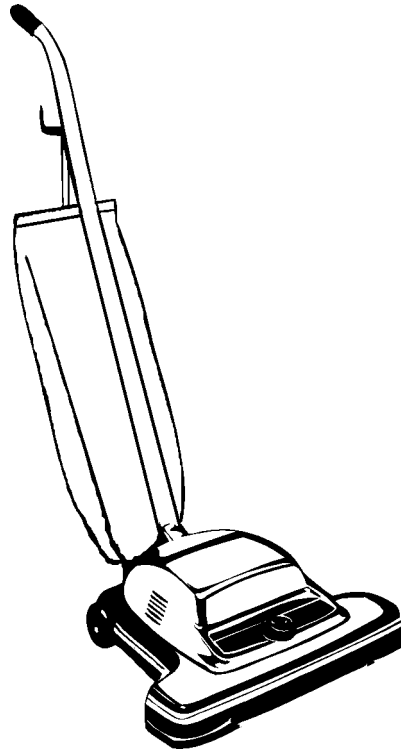
Directly to Parts & Service:  
By Email: **[Shop@Michco.com](mailto:Shop@Michco.com)**  
By Fax: (517) 702-2041  
By Voice: Use numbers above.

**Serving the Cleaning Industry Since 1922**

Notice: All copyrighted material remains property of original owners, all trademarks are property of respective owners. Manuals are subject to Manufacturer's reproduction limitations. Originals or reproductions were provided by manufacturers through a request. We make no warranty as to the correctness of information provided in this document and you assume all risk.

# AdVac™ 16HP

---



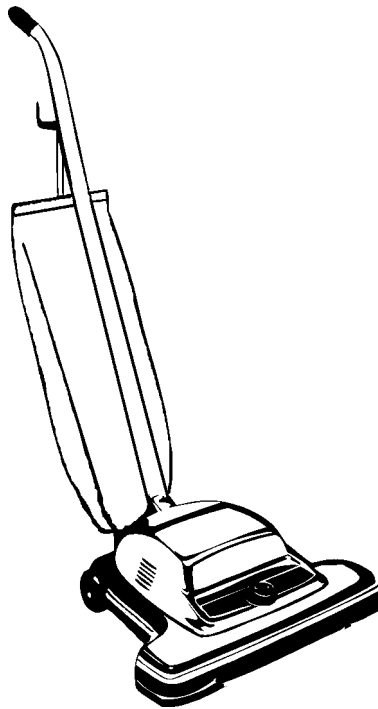
## **PARTS LIST**

**AdVac™ MODEL 56648244**



**Advance**  
*by Nilfisk-Advance*

1/02 FORM NO. 56042427

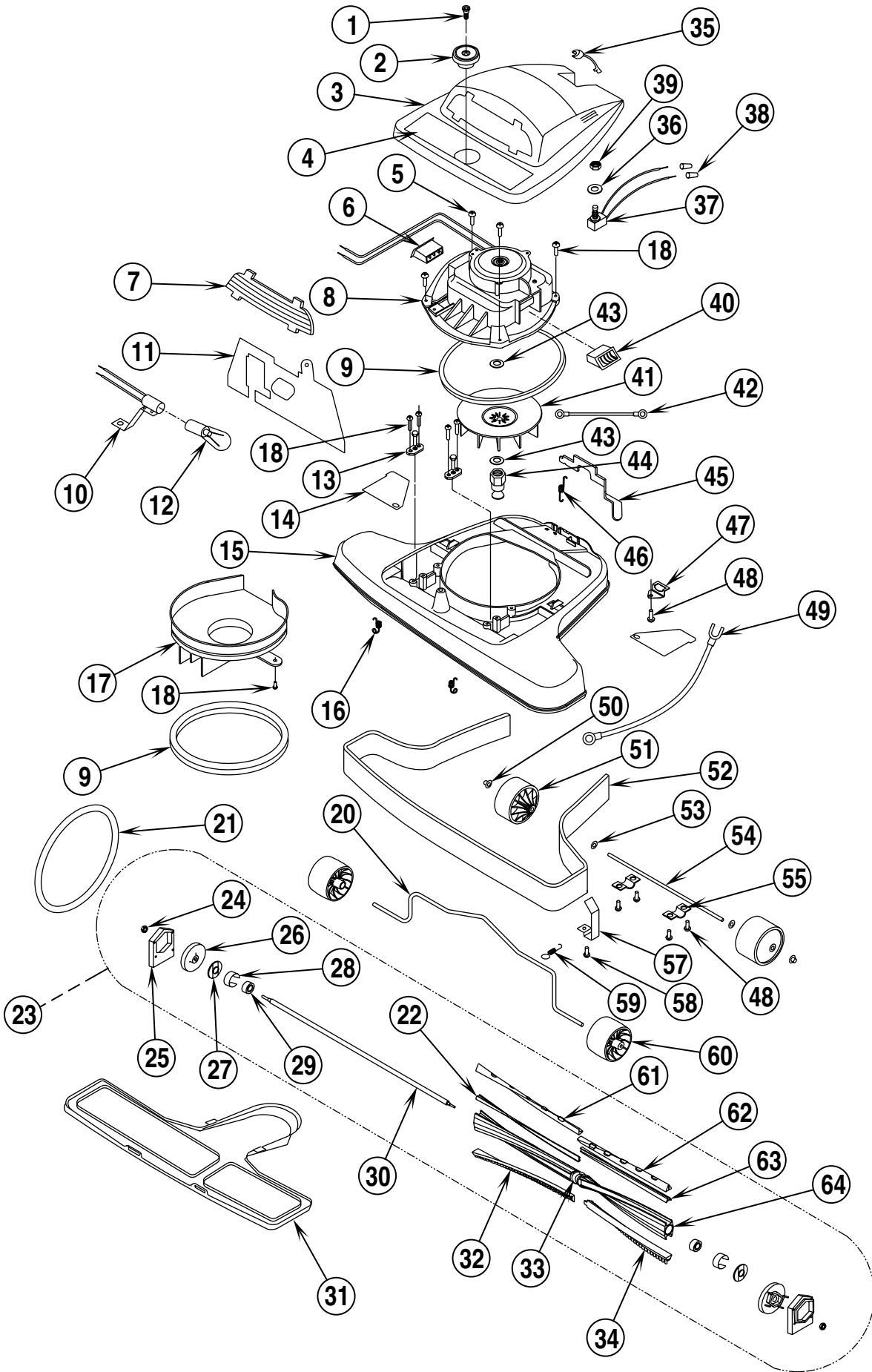


DESCRIPTION	PAGE
BASE ASSEMBLY .....	2-3
WIRING DIAGRAM .....	3
VAC MOTOR ASSEMBLY .....	4-5
HANDLE ASSEMBLY .....	6-7

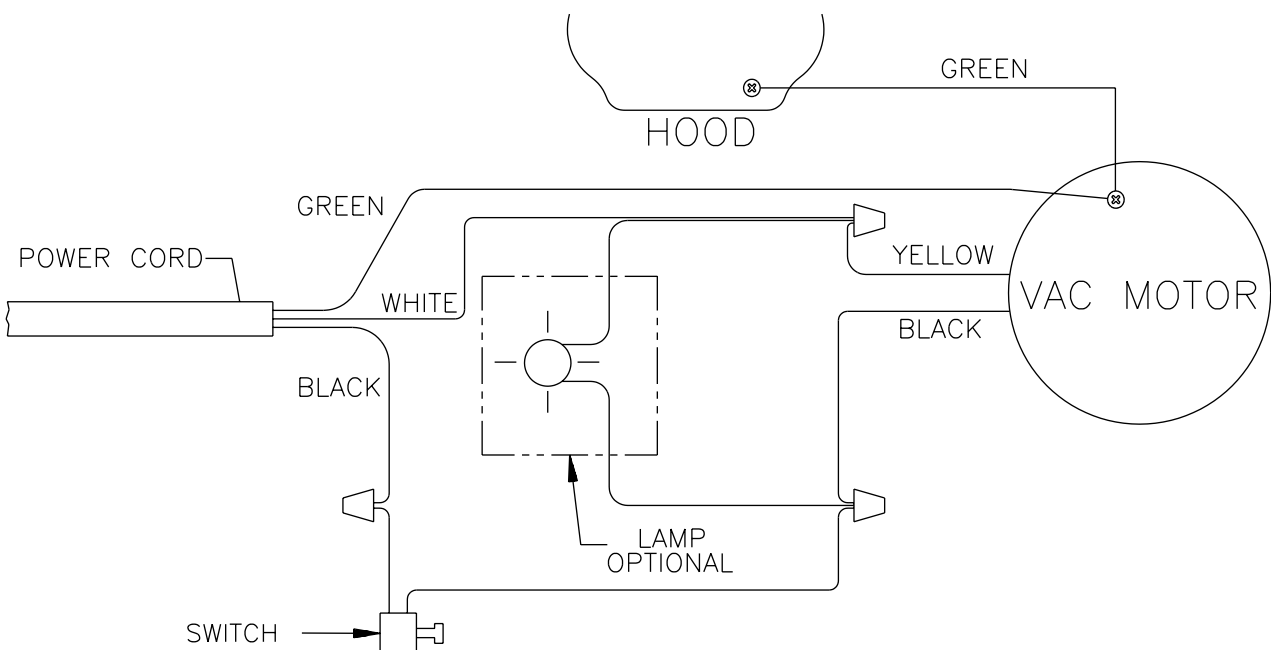
#### WHEN ORDERING PARTS

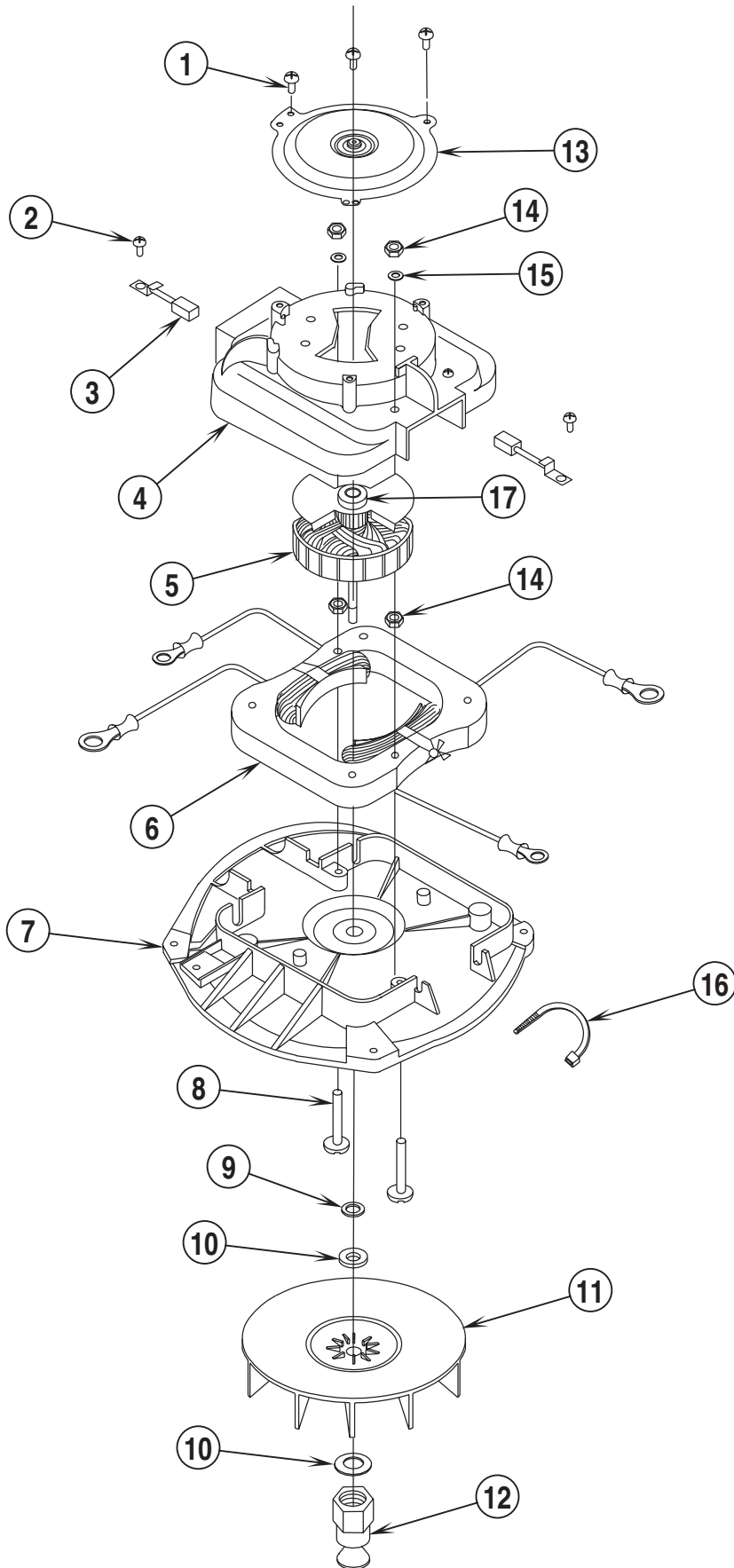
- \* Use the 8 digit numbers from the "Ref. No." columns in this parts list.
- \* Specify the model and serial number of the machine.
- \* Use the space below to record the model and serial number for future reference.

Model \_\_\_\_\_ Serial No. \_\_\_\_\_



Item	Ref. No.	Qty	Description	Item	Ref. No.	Qty	Description
1	56009385	1	Scr Shldr Plasform 12-10 x .172	36	56009383	1	Wsh, Int Shprf .509 x .625 x .020
2	56630517	1	Asm,Knob	37	56630621	1	Switch,Push—Spst,10a,125v
3	56648083	1	Hood,Mtr—Light/Lens,Lt Gray	38	56638120	3	Nut,Wire—Ideal 72b,Blu
4	56016571	1	Decal, AdVac	39	56630917	1	Nut-Switch Upright
5	56003322	1	Scr Tpg F Pan Hd 10-10x.625l	40	56630949	1	Asm,Air Duct—Left
6	56630950	1	Asm,Air Duct—Right	41	56630273	1	Fan—Upright,Lexan
7	56630265	1	Lens,Hood—Translucent	42	56630914	1	Asm,Wire—18ga,Grn,9.0l,Rings
8	56630358	1	Motor,Vac—Uprr,7 Amp,115v	43	56630799	2	Wshr Flt .312id.625od.094t Fbr
9	56630562	2	Gasket-Motor Seal	44	56630665	1	Pulley—Motor Drive,Service
10	56630680	1	Asm,Headlamp Socket—Uprights	45	56630395	1	Pedal,Foot—Uprr,White
11	56630420	1	Shield,Light—French/English	46	56630732	1	Spring,Ext .257d 1.25l .035wd
12	56630722	1	Lamp—Headlight,115v	47	56630668	1	Retainer Brkt—Bag Clip
13	56630791	2	Asm,Clamp & Screw	48	56009191	5	Scr Tpg F Pan Hd 10-10x.500l
14	56630606	2	Cover-Wheel	49	56630790	1	Asm,Wire—18ga,Grn,7.5l,Rings
15	56648062	1	Asm,Base	50	56630767	2	Nut,Push-On
16	56630765	2	Spring,Ext .304d .930l .055wd	51	56630500	2	Wheel—2.62dia,.316bore,.797hb
17	56630333	1	Cover-Fan Scroll	52	56630507	1	Guard,Furn—Clear Blue,37.00l
18	56003504	9	Scr Tpg F Pan Hd 10-10x.812 L	53	56009384	2	Wshr Flt .32id.562od.031
20	56630597	1	Axle-Front (C2035g)	54	56630671	1	Axle,Rear—Sc886-A
21	56630563	1	Belt-Disturbulator Drive	55	56630921	2	Clamp,Axle
22	56630596	1	Support -Long	57	56630447	2	Clip-Furniture Guard
23	56630493	1	Asm,Disturbulator—Uprr,16,Vg1	58	56002738	2	Scr Tpg F Pan Hd 8-10x.562l
24	56630819	2	Nut,Hex Lock— 10-32,Nyloc	59	56630620	1	Spring,Ext .275d 1.50l .024wd
25	56630488	2	Cap,Cover—Various Uprights	60	56630592	2	Wheel—2.25dia,.322bore,1.62hb
26	56630487	2	Cap,Disturbulator—1.480dia.	61	56630449	1	Bar-Beater Long
27	56630589	2	Cover Plate	62	56630450	1	Bar-Beater Short
28	56630763	2	Tolerance Ring	63	56630595	1	Support -Short-
29	56630762	2	Brg,Ball—.250id,.688od,.312w	64	56630452	1	Asm,Extrusion—W/Pulley
30	56630631	1	Shaft	65	56630878	1	Kit,Cover—Fan Scroll,Uprights
31	56630451	1	Asm,Plate—Bottom	**	56643426	1	Magnet, Permanent
32	56630701	1	Bristle Strip Asm.,Long	** = Not Included (optional)			
33	56630770	1	Pulley Replacement Pkg				
34	56630700	1	Bristle Strip Asm., Short				
35	56630768	1	Bshg,Strn Rlf—Heyco Sr-6n3-4				





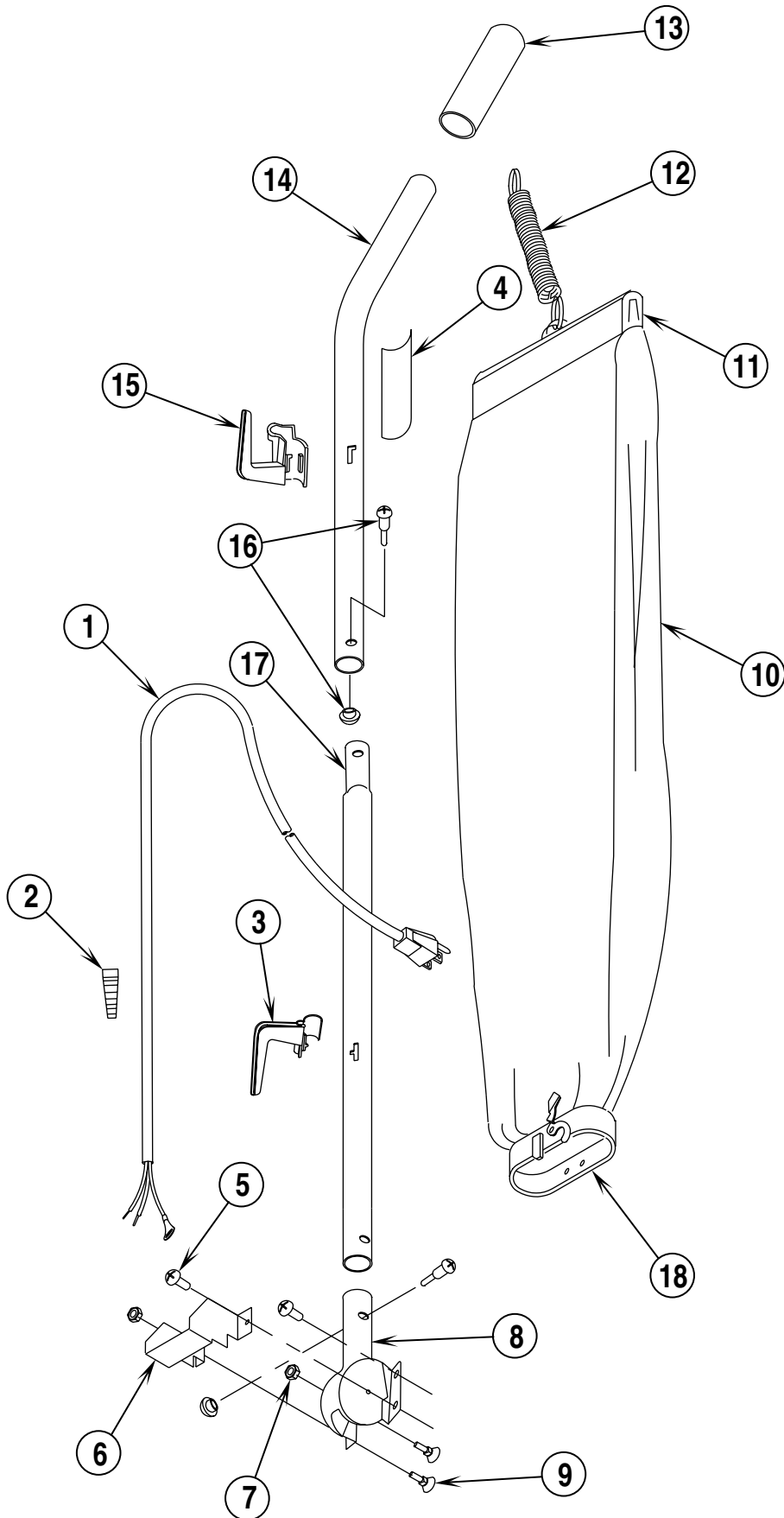
Item	Ref. No.	Qty	Description
1	56630787	3	Scr Tpg C Pan Hd 8-Btx.500l
2	56002811	2	Scr Mach Pan Hd 6-32x.250l
3	56630561	2	Brush,Mtr
4	56630525	1	Cover,Mtr
5	56630901	1	Kit,Armature—Replacement
6	56630895	1	Stator,Mtr
7	56630567	1	Asm,Base—Motor
8	56630793	2	Orlo Thd. Screw
9	56630870	1	Wshr Flt .318id.500od.046t Stl
10	56630799	2	Wshr Flt .312id.625od.094t Fbr
11	56630273	1	Fan—Upright,Lexan
12	56630665	1	Pulley—Motor Drive,Service
13	56630375	1	Asm,Retainer
14	56009148	4	Nut,Hex— 8-32,Zn Plt
15	56009010	2	Wshr Lk .172id.330od.020t Int
16	56630749	1	Tie-Cable—3.62" Long
17	56630723	1	Brg,Ball—.275id, .866od,.315w

**HANDLE ASSEMBLY**

02-1

6

**AdVac™ 16HP**



Item	Ref. No.	Qty	Description
1	56025715	1	Cord,Power—18-3,Sjt,Gray,50'
2	56630634	1	Spring,Comp .625d 2.12l .042wd
3	56630298	1	Hook,Cord—Uprt,Lower,Black
4	56630714	1	Label,Warn—Uprt,Eng/French
5	56003322	2	Scr Tpg F Pan Hd 10-10x.625l
6	56630623	1	Shield-Handle Socket
7	56002768	2	Nut,Hex Lock— 10-24,Nyloc
8	56630696	1	Asm,Handle Socket
9	56003543	2	Bolt,Carriage—10-24 X .625l
10	56630387	1	Asm,Bag—Top Fill,Blk,Tyt,Hdc
11	56630565	1	Clip—Bag,Chrome Over Nkl Plt
12	56630761	1	Spring,Ext .531d 3.89l .054wd
13	56630575	1	Grip,Handle—Black
14	56630267	1	Upper Tube—Upright
15	56630295	1	Hook,Cord—Uprt,Upper,Black
16	56630919	2	Asm,Screw—Handle
17	56630268	1	Handle Tube—Upright
18	56630874	1	Bag,Adapter—Service Item Only
**	56630427	1	Zipper Bag
**	56703533	A/R	Disposable Paper Bag (pkg of 3)
**	56703549	A/R	Disposable Paper Bag (case of 36)
**	56039515	1	Kit, Dirt Cup

\*\* = Not Included (optional)



**Nilfisk  
Advance**  
*setting standards*

Nilfisk-Advance, Inc.  
14600 21st Avenue North  
Plymouth, MN, 55447-3408  
[www.nilfisk-advance.com](http://www.nilfisk-advance.com)  
Phone: 800-989-2235  
Fax: 800-989-6566  
©2001 Nilfisk-Advance, Inc.,  
Plymouth, MN 55447-3408  
Printed in the U.S.A.