



Electronic Service Manuals

This electronic document is provided as a service to our customers. We do not create the contents of the information contained in this document. Should you have detailed questions pertaining to the information contained in this document, you may contact Michco, or the manufacturer which provided the original information in this electronic deliverable. Michco's only part in this electronic deliverable was the electronic assembly process.

You may contact Michco through the following methods:
Phone (517) 484-9312 or (800) 331-3339 MI, OH, IN only
2011 N. High St. -- Lansing, Michigan -- 48906
Fax: (517) 484-9836
Email: CustServ@Michco.com
Web site: www.Michco.Com
Parts Web site: www.FloorMachineParts.Com

Order Parts on Line at:
www.FloorMachineParts.Com

Directly to Parts & Service:
By Email: **Shop@Michco.com**
By Fax: (517) 702-2041
By Voice: Use numbers above.

Serving the Cleaning Industry Since 1922

Notice: All copyrighted material remains property of original owners, all trademarks are property of respective owners. Manuals are subject to Manufacturer's reproduction limitations. Originals or reproductions were provided by manufacturers through a request. We make no warranty as to the correctness of information provided in this document and you assume all risk.

Papoose™



PARTS LIST

Advance MODELS 56301301, 56301303, 56301401

This parts list is for machines after serial number 300609

All models covered in this manual are OBSOLETE



**Nilfisk
Advance**

setting standards

7/90 revised 3/01 FORM NO. 56042227

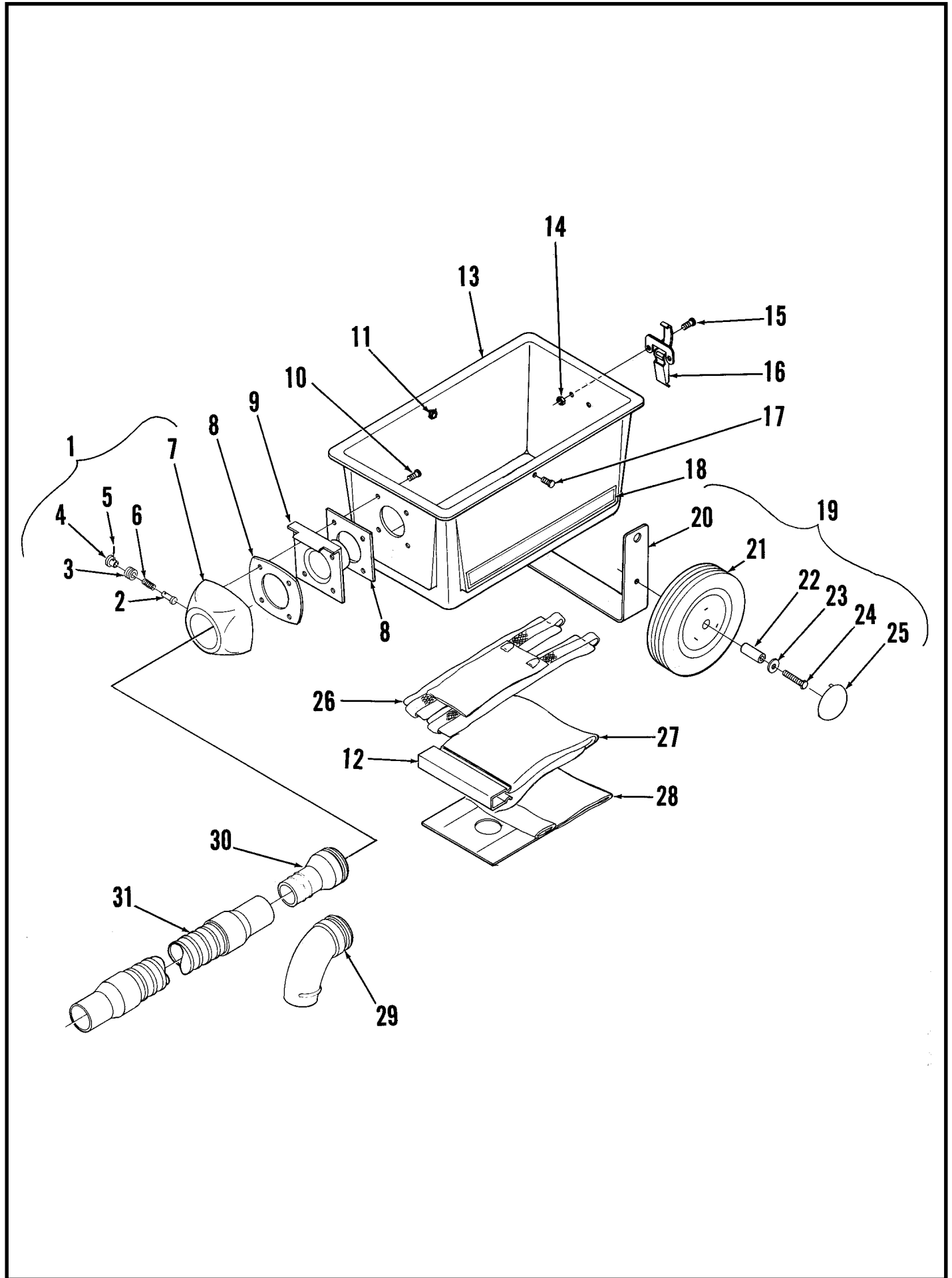
TABLE OF CONTENTS

<u>DESCRIPTION</u>	<u>PAGE</u>
Lower Housing	1-2
Upper Housing 115V	3-4
Upper Housing 230V	5-6
Wiring Diagrams	7

WHEN ORDERING PARTS

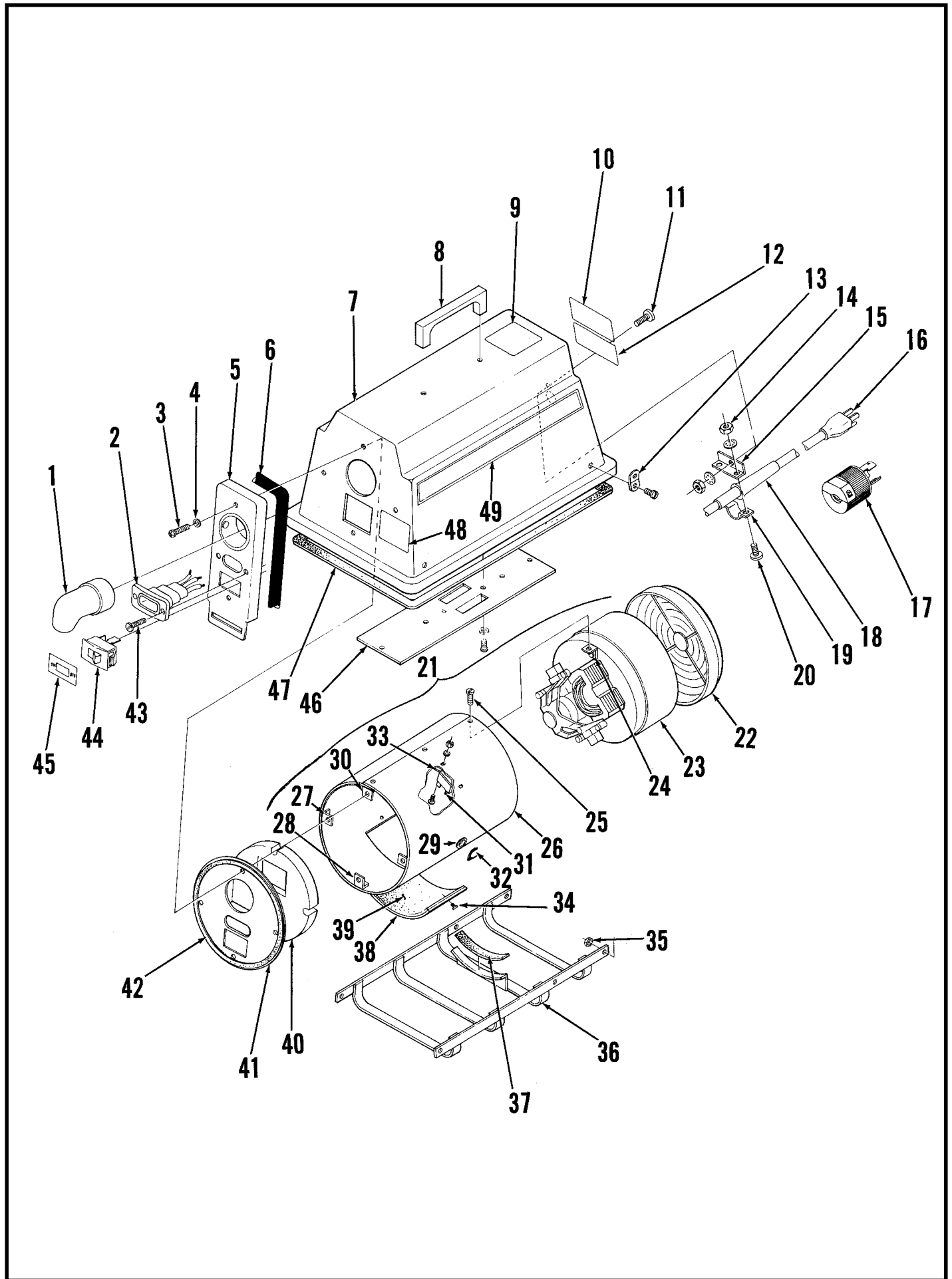
- * Use the 8 digit numbers from the "Part No." columns in this parts list.
- * Specify the model and serial number of the machine.
- * Use the space below to record the model and serial number for future reference.

Model _____ Serial No. _____



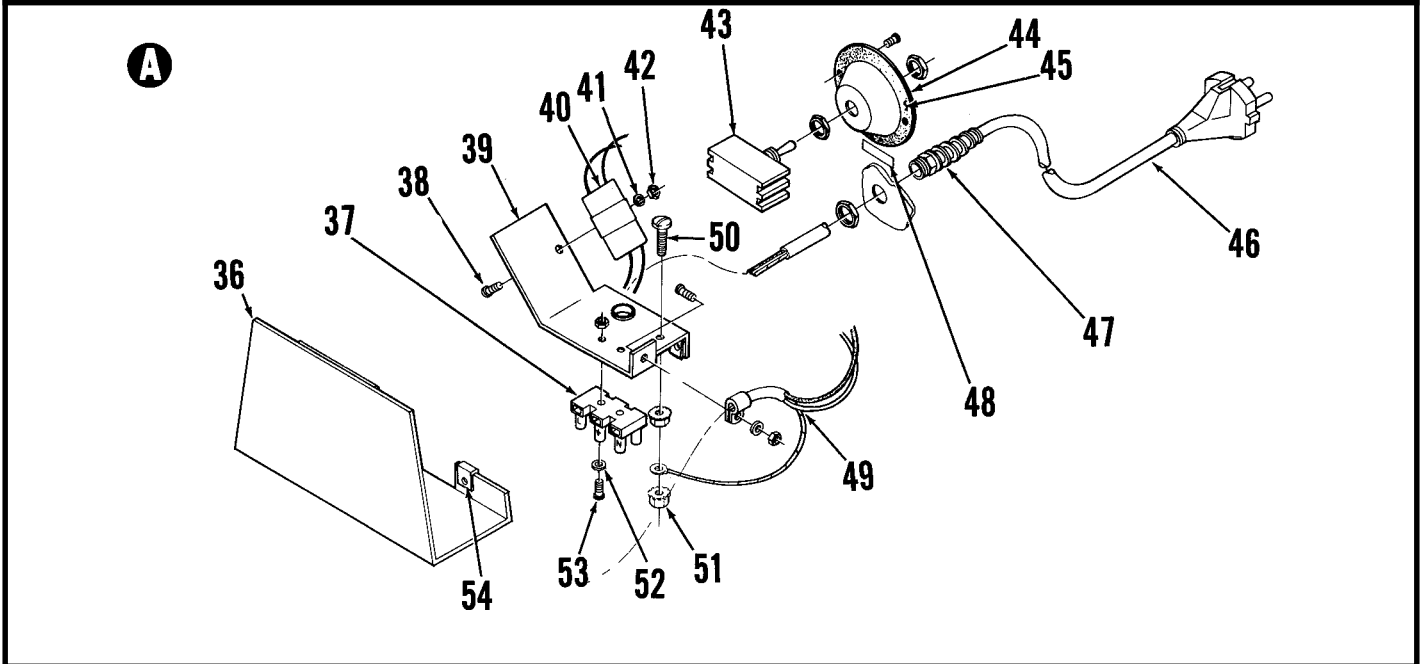
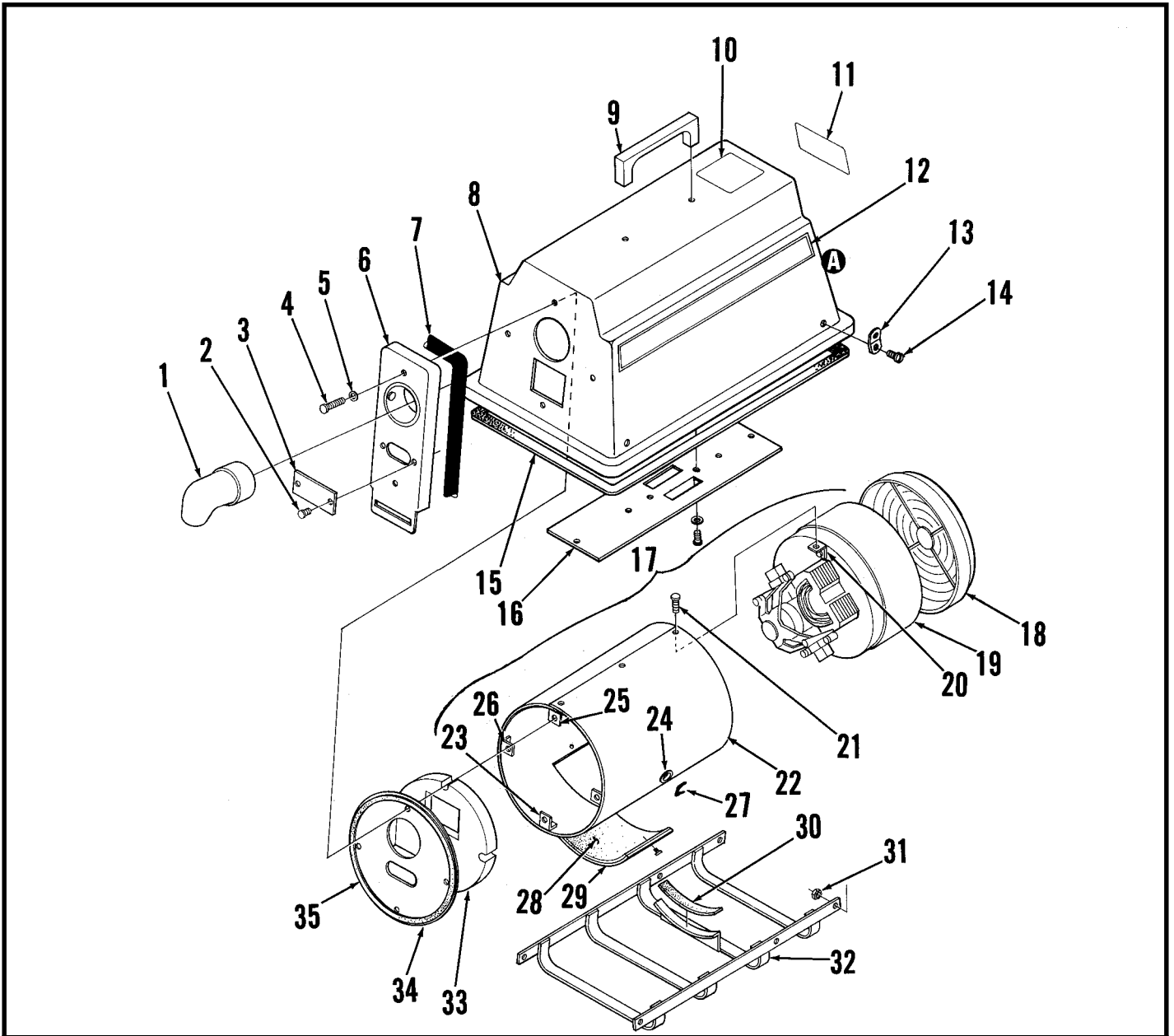
LOWER HOUSING

Item	Part No.	Qty	Description
1	56205821	1	Coupler Assembly (#2-7)
2	56201391	1	Pin
3	56201383	1	Socket
4	56201405	1	Knob
5	56201472	1	Pin
6	56201448	1	Spring
7	56205854	1	Connector
8	56201390	2	Gasket
9	56301317	1	Plate
10	56209519	4	#10-24 x 3/4 Screw
11		2	#10-24 Nut
12	56320676	1	Bag Clamp
13	56301337	1	Housing
14		2	#8-32 Nut
15		2	#8-32 x 3/8 Screw
16	56371181	1	Latch
17		2	#10-24 x 3/8 Screw
18	56014181	2	Decal, Stripe
19	56300284	1	Wheel Assembly (optional) (#20-25)
20	56300268	1	Bracket
21	56300233	2	Wheel
22	56300235	2	Bushing
23		2	5/16 Washer
24		2	5/16-18 x 1-1/2 Bolt
25	56300276	2	Hub Cap
26	56301430	1	Shoulder Strap
27	56300322	1	Cloth Bag
28	56300349	1	Paper Bag (pkg of 10)
29	56370592	1	Hose Adapter
30	56301339	1	Coupler
31	56301313	1	Hose Assembly



UPPER HOUSING 115V - 60 & 400 CYCLE

Item	Part No.	Qty	Description	Item	Part No.	Qty	Description
1	56301311	1	Deflector	27	56300527	2	Side Bracket
2	56301370	1	Receptacle	28	56300500	1	Bottom Bracket
3		2	#8-32 x 1-1/2 Screw	29	56301308	1	Grommet
4		7	#8 Shakeproof Washer	30	56300519	1	Top Bracket
5	56301349	1	Plate 60 Cycle only	31	56301402	1	Rectifier 400 Cycle only
6	56200247	2'	Gasket (610 mm)	32	56320358	1	Strain Relief
7	56301341	1	Housing	33	56301404	1	Plate 400 Cycle only
8	56300101	1	Handle	34		2	#6-32 x 1/4 Screw
9	56015314	1	Decal, Warning	35		8	#10-24 Nut
10	56015379	1	Decal, Warning	36	56301345	1	Basket
11		6	#8-32 x 3/8 Screw	37	56320099	1'	Gasket (305 mm)
12	56015365	1	Name Plate 60 Cycle	38	56301348	1	Cover
13	56300225	4	Bracket	39	56301350	1	Gasket
14		6	#8-32 Nut	40	56301358	1	Foam
15	56171434	1	Bracket	41	56301363	1	Plate
16	56301352	1	Cord Set		56301359	1	Gasket & Plate Assy (#40-42)
17	56369500	1	Locking Cap 400 Cycle only	42	56301385	1	Gasket and
18	56301396	1	Strain Relief		56301387	1	Gasket
19	56300542	1	Clamp	43	56570514	2	#6-32 x 3/8 Screw
20		2	#8-32 x 1/2 Screw	44	56325140	1	Switch
21	56301362	1	Vac Motor Assy (#22-30)	45	56015330	1	Decal, On-Off
22	56384898	1	Filter	46	56301333	1	Plate
23	56300381	1	Vac Motor	47	56300314	4'	Gasket (1220 mm)
		1	* Carbon Brush Set	48	56015160	1	Decal, Power Outlet
		2	* Bearing	49	56014179	1	Decal, Papoose
		2	* Fan				
24	56300535	2	Bracket				* = replacement parts for 56300381
25		4	#8-32 x 3/8 Screw				
26	56301338	1	Shield				

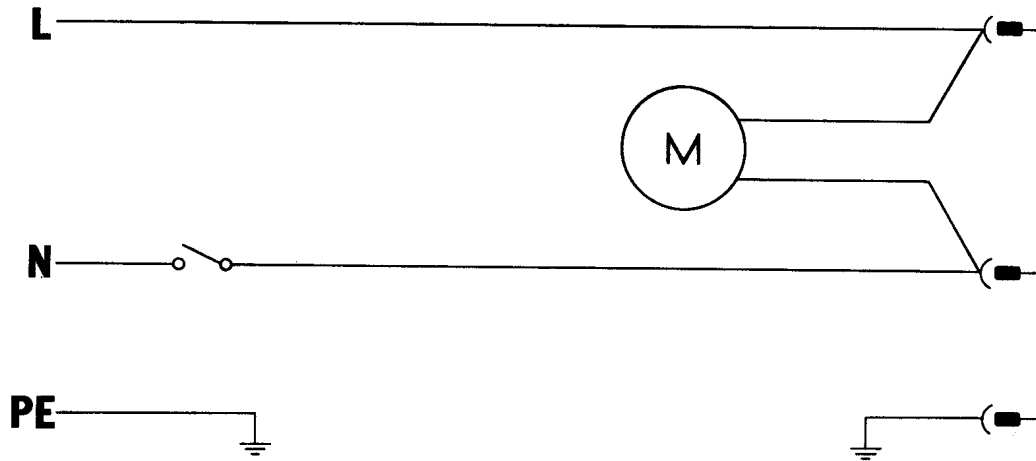


UPPER HOUSING 230V

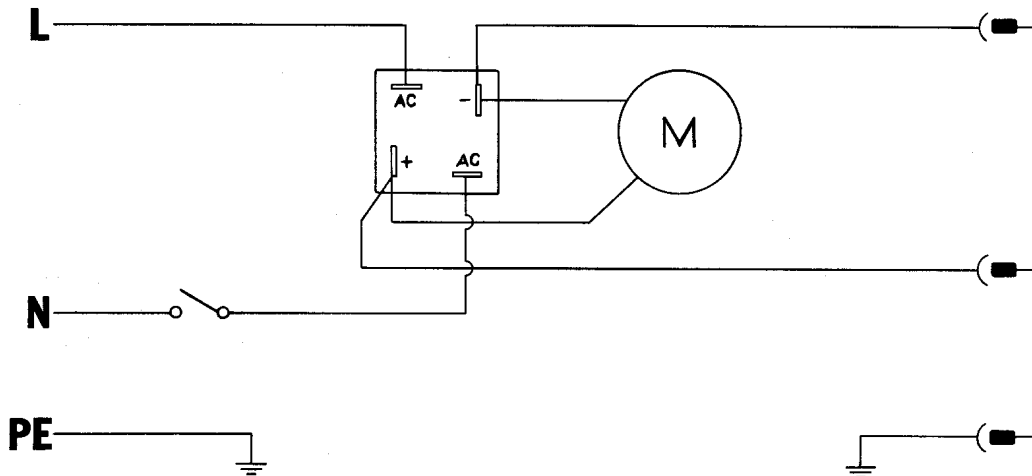
Item	Part No.	Qty	Description	Item	Part No.	Qty	Description
1	56301311	1	Deflector	29	56301348	1	Cover
2	56570514	2	#6-32 x 3/8 Screw	30	56320099	1'	Gasket (305 mm)
3	56301319	1	Cover	31		10	#10-24 Nut
4		2	#8-32 x 1-1/2 Screw	32	56301345	1	Basket
5		7	#8 Washer		56301361	1	Plate & Gasket Assy (#33-35)
6	56301351	1	Plate	33	56301340	1	Foam
7	56200247	2'	Gasket (610 mm)	34	56301365	1	Plate
8	56301343	1	Housing	35	56200754	2'	Gasket (610 mm)
9	56300101	1	Handle	36	56301392	1	Protector
10	56014268	1	Decal, Caution	37	56183523	1	Terminal Block
11	56015402	1	Name Plate	38		2	#10-32 x 1/2 Screw
12	56014179	1	Decal, Papoose	39	56301318	1	Plate
13	56300225	4	Bracket		56301326	1	Harness Assy (#37-43,49-54)
14		10	#10-24 x 1/2 Screw	40	56328094	1	RFI Filter
15	56300314	4'	Gasket (1220 mm)	41		2	#10 Washer
16	56301333	1	Plate	42		2	#10-32 Nut
17	56301382	1	Vac Motor Assy (#18-27)	43	56301636	1	Switch
14	56384898	1	Filter	44	56301367	1	Switch Guard
19	56300411	1	Vac Motor	45	56320099	1'	Gasket (305 mm)
	56203518	1	* Carbon Brush Set	46	56301309	1	Power Cord
	56228051	1	* Bearing	47	56323046	1	Strain Relief
	56208191	2	* Fan	48	56023224	1	Decal, On-Off
20	56300535	2	Bracket	49	56301314	1	Cord
21		4	#8-32 x 3/8 Screw	50		1	#8-32 x 3/4 Screw
22	56301336	1	Shield	51		2	#8-32 Nut
23	56300500	1	Bottom Bracket	52		2	#4-40 x 7/8 Screw
24	56570206	1	Grommet	53		2	#4 Washer
25	56300519	1	Top Bracket	54	56255874	2	Spring Nut
26	56300527	2	Side Bracket				
27	56320358	2	Strain Relief				
28	56301350	1	Gasket				

* = replacement parts for 56300411

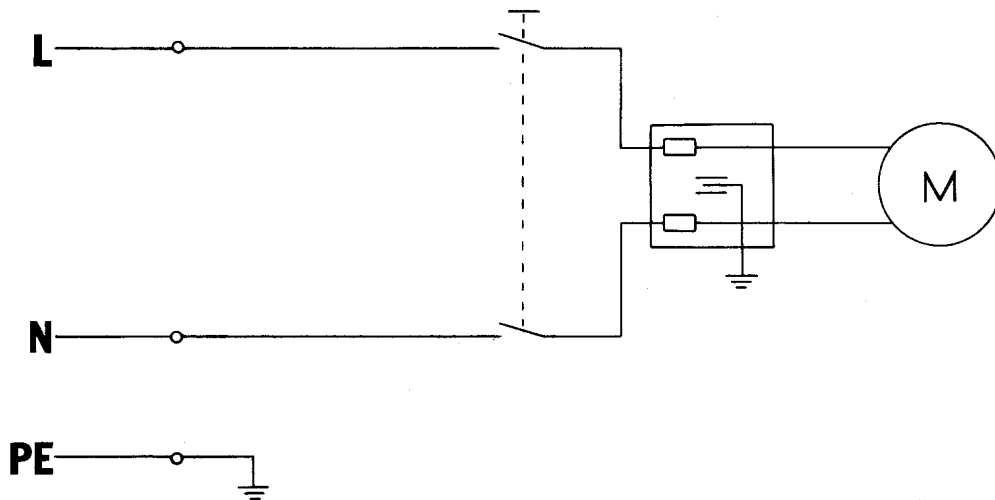
115V, 60 CYCLE



115V, 400 CYCLE



230V





Nilfisk-Advance, Inc.
14600 21st Avenue North
Plymouth, MN, 55447-3408
www.nilfisk-advance.com
Phone: 800-989-2235
Fax: 800-989-6566
©2001 Nilfisk-Advance, Inc.,
Plymouth, MN 55447-3408
Printed in the U.S.A.