



Electronic Service Manuals

This electronic document is provided as a service to our customers. We do not create the contents of the information contained in this document. Should you have detailed questions pertaining to the information contained in this document, you may contact Michco, or the manufacturer which provided the original information in this electronic deliverable. Michco's only part in this electronic deliverable was the electronic assembly process.

You may contact Michco through the following methods:
Phone (517) 484-9312 or (800) 331-3339 MI, OH, IN only
2011 N. High St. -- Lansing, Michigan -- 48906
Fax: (517) 484-9836
Email: CustServ@Michco.com
Web site: www.Michco.Com
Parts Web site: www.FloorMachineParts.Com

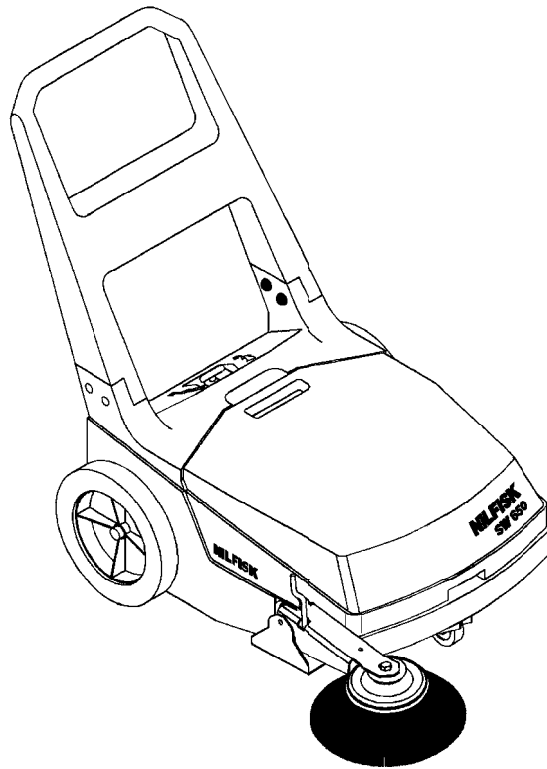
Order Parts on Line at:
www.FloorMachineParts.Com

Directly to Parts & Service:
By Email: **Shop@Michco.com**
By Fax: (517) 702-2041
By Voice: Use numbers above.

Serving the Cleaning Industry Since 1922

Notice: All copyrighted material remains property of original owners, all trademarks are property of respective owners. Manuals are subject to Manufacturer's reproduction limitations. Originals or reproductions were provided by manufacturers through a request. We make no warranty as to the correctness of information provided in this document and you assume all risk.

SW 650

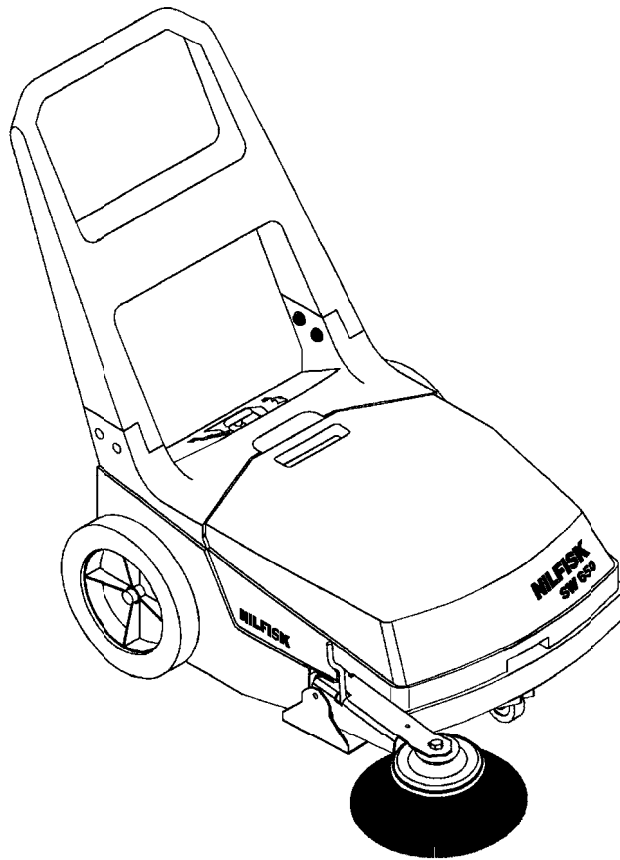


PARTS LIST **Nilfisk MODEL 56475017**



Nilfisk
Advance
setting standards

10/94 revised 10/00 FORM NUMBER 56042290
BOOK F SECTION 0.3.1



DESCRIPTION	PLAN
Container System - Chassis And Handle	F-0.3.1-3
Container System - Axle And Wheels	F-0.3.1-5
Hopper And Main Broom System	F-0.3.1-7
Side Broom System	F-0.3.1-9
Broom Selector Guide	F-0.3.1-10

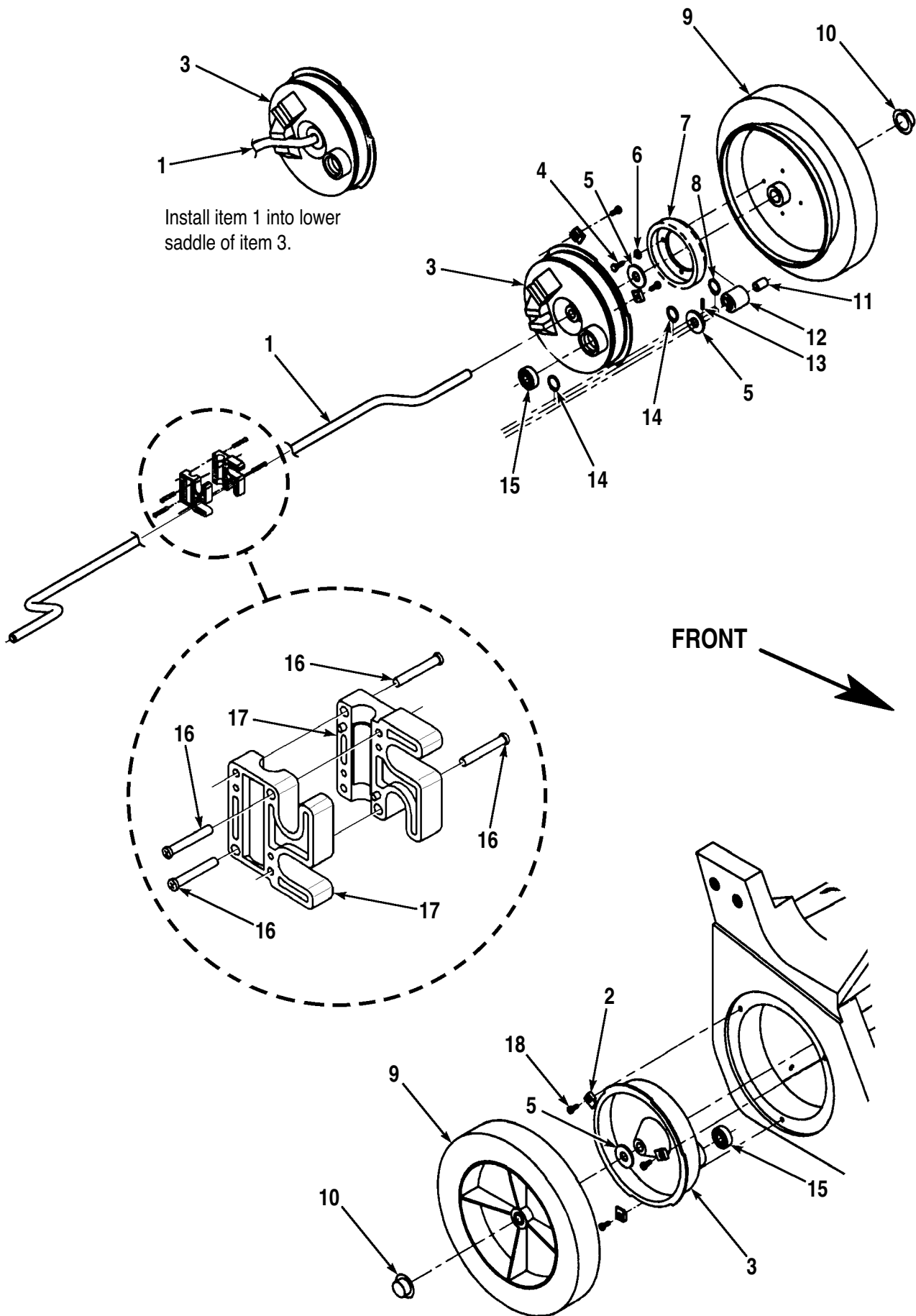
WHEN ORDERING PARTS

- * Use the 8 digit numbers from the "Ref. No." columns in this parts list.
- * Specify the model and serial number of the machine.
- * Use the space below to record the model and serial number for future reference.

Model _____ Serial No. _____

94-10	CONTAINER SYSTEM - CHASSIS AND HANDLE	BOOK F		
00-10	SW 650	F	0.3.1	3

Item	Ref. No.	Qty	Description
1	56475025	1	Handle
2	56002606	4	Scr, Hex 5/16-18 x 3-1/4
3	56475052	1	Adjusting Screw
4	56475091	1	Hopper Top Seal
5	56475088	2	Strap
6	56003036	16	1/4-20 x 1/2 Loc Screw
7	56475026	1	Chassis
8	56475099	1	Swivel Caster
9	56475036	2	Strap
10	56475120	2	Chassis Side Skirt
11	56475118	1	Chassis Rear Skirt
	56475114	1	Skirt Kit (includes #10 & 11)
12	56475080	1	Mounting Plate
13	56475081	1	Broom Arm Yoke
14	56003117	3	1/4-20 x 2 Loc Screw
15	56003120	1	Cotter Hair Pin 1/4 x 1/2
16	56002168	1	1/2 Flat Washer
17	56002826	4	Nut, Hex Nyl Loc-Thin 5/16-18
18	56002220	8	Wsh, Flt Std 5/16



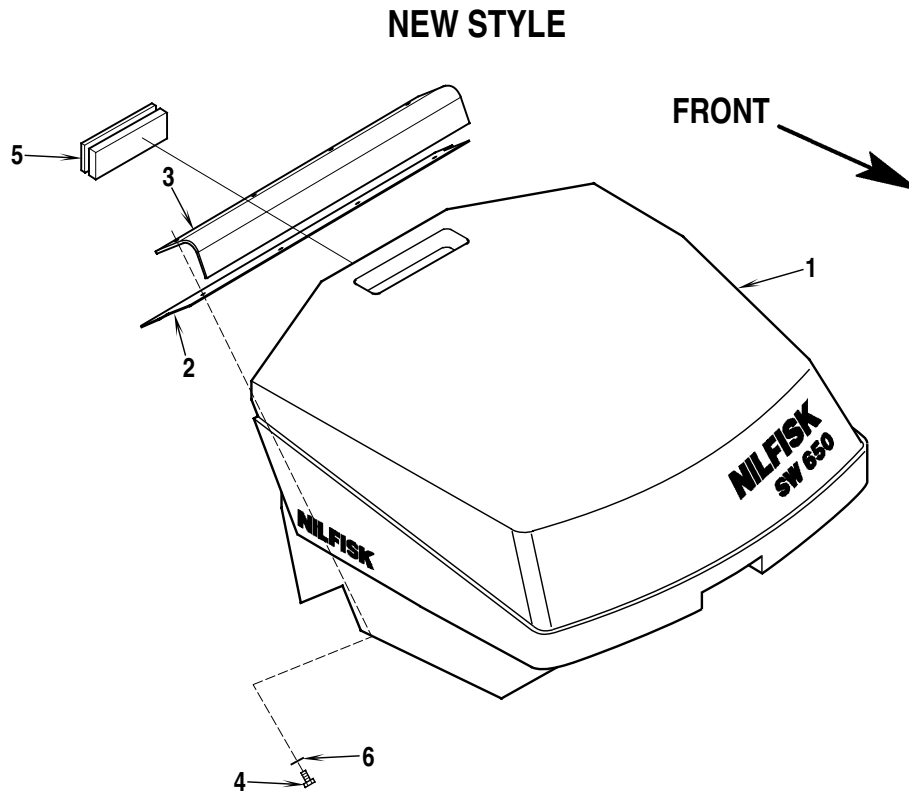
94-10	CONTAINER SYSTEM - AXLE AND WHEELS	BOOK F		
00-10	SW 650	F	0.3.1	5

Item	Ref. No.	Qty	Description
1	56475054	1	Axle TSB 686
2	56475104	6	Tab
3	56475072	2	Support Hub
4	56009153	4	#10-24 x 1/2 Loc Screw
5	56166839	5	Thrust Bearing
6	56001954	4	#10 Flat Washer
7	56475066	1	Gear
8	56157066	1	Retainer Ring
9	56475023	2	Wheel Assembly
*	56475432	2	Tire
*	56475027	2	Wheel Hub Rim
*	56475101	4	Bearing
10	56009097	2	Cap Nut TSB 686
11	56475110	1	Bearing TSB 686
12	56475064	1	Pinion TSB 686
13	56003116	1	1/8 x 5/8 Pin
14	56003255	2	Retainer Ring
15	56475108	2	Bearing
16	56003112	4	#10-14 x 1 Plastite Screw
17	56475111	2	Yoke
	56475112	1	Yoke Kit (includes #16 & 17)
18	56009139	6	#10-24 x 3/8 Loc Screw

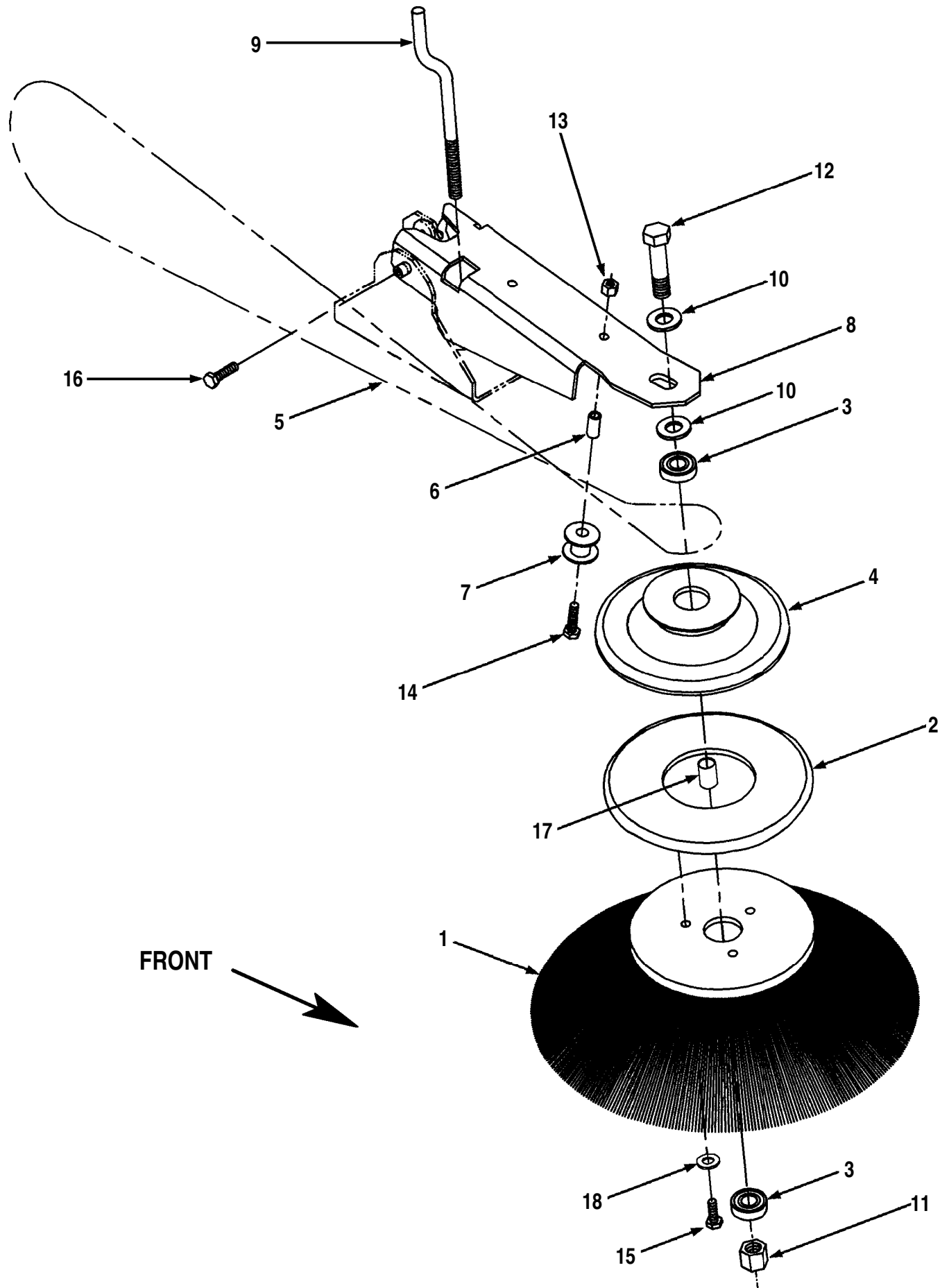
94-10	HOPPER AND MAIN BROOM SYSTEM	BOOK F		
00-10	SW 650	F	0.3.1	7

Item	Ref. No.	Qty	Description
1	56475019	1	Hopper
2	56475082	1	Hopper Lip
3	56475089	1	Hopper Strap Note
4	56475090	1	Hopper Lip Plate Note
5	56002829	3	1/4-20 x 5/8 Screw
6	56002768	3	1/4-20 Nyl Loc Nut
7	56009038	4	#10-24 x 7/8 HP-5 Screw
8	56475106	1	Breather
9	56001954	3	#10 Flat Washer
10	56505611	1	Main Broom
11	56475068	2	Broom Mounting Disc
12	56009149	4	1/4-14 x 1 Screw
13	56475056	1	Broom Shaft TSB 686
14	56003114	2	5/32 x 7/8 Pin

Note: The Hopper Lip Plate PN56475090 (item #4 at left) and Hopper Strap PN56475089 (item #3 at left) have been eliminated. They are being replaced by a one piece Hopper Lip Plate PN56475090 (item #3 below). All machines built after June 1995 will have this change. When installing the new Hopper Lip Plate PN56475090 on a machine built before June 1995, the (3) holes for mounting the old Hopper Lip Plate PN56475090 (item #4 at left) must be plugged. You can use the existing (3) screws and nuts (items #5 and 6 at left) by simply re-installing them in the holes after removing the Hopper Lip Plate (item #4 at left). Items #3 and 4 at left are no longer available, if they need to be replaced, order item #3 below.

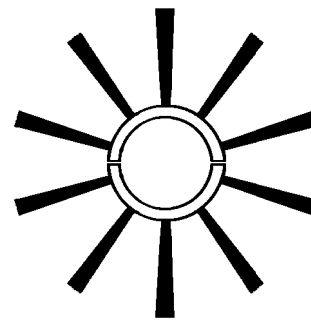
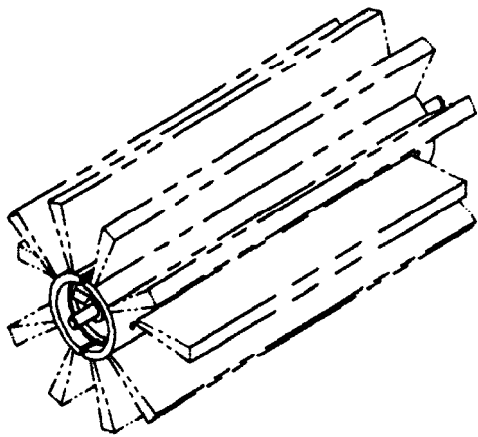


Item	Ref. No.	Qty	Description
1	56475019	1	Hopper
2	56475082	1	Hopper Lip
3	56475090	1	Plate, Hopper Lip
4	56009039	4	Scr, Hex Hd Thd Form 10-24 x .50
5	56475106	1	Breather
6	56001954	4	Wsh, Flt SAE #10



94-10	SIDE BROOM SYSTEM	BOOK F		
00-10	SW 650	F	0.3.1	9

Item	Ref. No.	Qty	Description
1	56475179	1	Side Broom
2	56475055	1	Bumper Disc
3	56475108	2	Bearing
4	56475070	1	Pulley
5	56475122	1	Belt
6	56330741	2	Bushing
7	56475408	2	Guide Wheel
8	56475102	1	Broom Arm
9	56475094	1	Adjusting Screw TSB 686
10	56009017	2	1/2 Flat Washer
11	56003312	1	M12-1.75 Nyl Loc Nut
12	56003311	1	M12-1.75 x 60 Bolt
13	56002708	2	1/4-20 Nyl Loc Nut
14	56002825	2	1/4-20 x 1-1/4 Screw
15	56002948	3	1/4-20 x 3/4 Screw
16	56003039	1	1/4-20 x 1/2 Screw
17	56367206	1	Bushing
18	56002098	3	1/4 Flat Washer



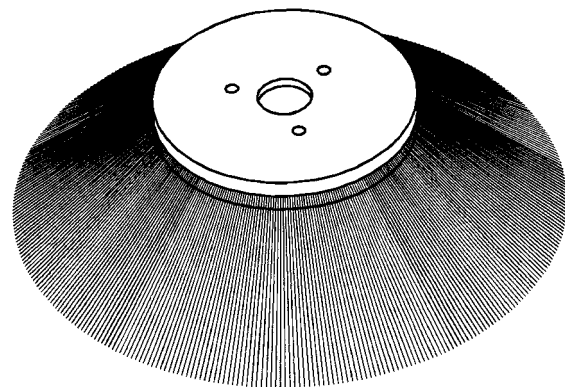
10 Row

Main Broom: PN56505611 Polypropylene (STD.)
 Good all-purpose broom for hard floor and carpet. Resists moisture.

Length 19" (48 cm)
 Diameter 10" (25 cm)
 Useable Bristle 2" (5 cm)

PN56505610 Union Mix (Optional)
 Stiffer, natural fiber bristle for heavier duty applications, rough concrete or asphalt. Moisture can attack this natural fiber bristle.

Side Broom: PN56475179 Polypropylene (STD.)
 The side broom function is to sweep the dirt and debris away from the curb, wall, pallet, etc. into the path of the main broom.



Diameter 11" (28 cm)

DANMARK

Nilfisk-Advance Nordic A/S
 Myntevej 3, 8900 Randers
 ☎ 86 42 84 33 – Fax 86 41 19 55

NORGE

Nilfisk-Advance AS
 Enebakkn, 119, 0680 Oslo, Postboks 196, Manglerud,
 0612 Oslo
 ☎ 22 08 63 50 – Fax 22 08 63 63
 Distriktsrepresentanter over hele landet

SVERIGE

Nilfisk-Advance AB
 Sjöbjörnsvägen 5, 117 67 Stockholm
 ☎ 085 55 944 00 – Fax 085 55 944 30

FINLAND/ SUOMI

BERNER Ltd. Facotek Department
 Etäleranta 4B, 00130 Helsinki
 ☎ +358 9 1345 1382

AUSTRALIA

Nilfisk-Advance Pty. Ltd.
 ACN 003 762 623
 Head office: 17 Leeds Street, Rhodes, N. S. W. 2138
 ☎ (02) 9736 1244 – Fax (02) 9736 3910
 Customer Responce Centre:
 ☎ 1 800 011 013

BELGIQUE / BELGIË/ LUXEMBOURG

Nilfisk-Advance s.a./n.v.
 Doornveld/ Sphere Business Park
 Industrie Asse 3, nr 11 – bus 41
 1731 Zellik-Asse
 ☎ (02) 467.60.50 Fax (02) 463.44.16

CANADA

Nilfisk-Advance Ltd.
 396 Watline Avenue
 Mississauga, Ontario L4Z 1X
 ☎ (905) 712-3260 – Fax (905) 712-3255

DEUTSCHLAND

Nilfisk-Advance AG
 Siemensstraße 25-27
 25462 Rellingen
 ☎ (041 01) 3990 – Fax (04101) 399191
 Zentraler Kundenservice
 ☎ für die Industrie: 0180 535 67 97
 ☎ Institutionen und Gebäudereiniger: 0180 500 11 70

FRANCE

Nilfisk-Advance S.A.
 BP 246
 91944 Courtaboeuf Cedex
 ☎ (01) 69.59.87.00 Télécopie (01) 69.59.87.01

HONG KONG

Nilfisk-Advance Ltd.
 2001, 20/F HK Worsted Mills
 Industrial Building
 31-39 Wo Tong Tsui Street
 Kwai Chung, N.T.
 ☎ 2427 59 51 – Fax 2487 5828

IRELAND

Nilfisk-Advance Ltd.
 28 Sandyford Office Park
 Dublin 18
 ☎ +353 1 2943838 – Fax +353 1 2943845

JAPAN

Nilfisk-Advance Inc.
 3-4-9 Chigasaki Minami
 Tsuzuki-Ku Yokohama 224
 ☎ 045-942-7741 – Fax 045-942-6545

MALAYSIA

Nilfisk-Advance Sdn Bhd
 Lot 2, 1st. Floor
 Lorong 19/1A
 46300 Petaling Jaya
 Selangor Darul Ehsan
 ☎ 03-7568188 / 03-7568189 / 03-7568388 – Fax 03-7566828

NEDERLAND

Nilfisk-Advance B.V.
 Flevolaan 7, Postbus 341
 1380 AH Weesp
 ☎ 0294-462121 – Fax 0294-430053

NEW ZEALAND

Nilfisk-Advance Limited
 477 Great South Road, Penrose
 Auckland
 ☎ (09) 525 0092 – Fax (09) 525 6440

SCHWEIZ / SUISSE

Nilfisk-Advance AG
 Ringstrasse 19, 9533 Kirchberg/Wil
 ☎ 719 23 52 83 – Fax 719 23 84 44

SINGAPORE

Nilisk-Advance Pte. Ltd.
 22, Woodlands Industrial Park E1
 Singapore 757740
 ☎ (65) 759 9100 – Fax (65) 759 9133

TAIWAN

Nilfisk-Advance Ltd.
 1 F, No.23, Lane 132, Sec. 2
 Ta An Road, Taipei
 ☎ 700 22 68 – Fax 784 08 43

UNITED KINGDOM

Nilfisk-Advance Limited
 Newmarket Road
 Bury St. Edmunds
 Suffolk IP 33 3SR
 ☎ (01284) 763163 – Fax (01284) 750562

USA

Nilfisk-Advance Inc.
 14600 21st Avenue North
 Plymouth, MN 55447-3408
 ☎ +1 800 989 2235 – Fax 1 800 989 6566

Nilfisk-Advance of America, Inc.
 300 Technology Drive
 Malvern, PA 19355
 ☎ (610) 647 647-6427

ÖSTERREICH

Nilfisk-Advance GmbH
 Vorarlberg Allee 46
 1230 Wien
 ☎ 1 616 58 30 – Fax 1 616 58 30 40

ESPAÑA

Nilfisk-Advance, S.A.
 Torre D'Ara
 Passeig del Rengle, 5 Pl.9-10
 E-08302 – Mataró (Barcelona)
 ☎ Tel. 93 741 24 00 – Fax: 93 757 80 20
 Central atención al cliente: 902 200 201
nilfisk@nilfisk-advance.es – www.nilfisk-advance.com
 Distribuidores y Servicio Técnico en toda España y Andorra

ITALIA

Nilfisk-Advance Italia Spa
 Località Novella Terza
 26862 Guardamiglio (LO)
 Italy
 ☎ +39 0377 414067-54 – Fax +39 0377 414097
www.nilfisk-advance.com

PORTUGAL

Nilfisk-Advance Lda.
 Rua Cândido de Figueiredo, 91-i, 1500-133 LISBOA
 ☎ 01/7784142 – Fax 01/7785613
 Porto 02/526766 – Fax 02/520739
 Açores 096/628092/3 – Fax 096/628129
 Madeira 091/228965 – Fax 091/228796

GREECE

Embiom S.A.
 Λεωφ. Βουλιαγμένης 60
 Αργυρούπολη
 164 52 Αθήνα
 ☎ 9950613 - Fax 9951680



**Nilfisk
 Advance**
setting standards

Material composition of the Nilfisk SW 650

