



Electronic Service Manuals

This electronic document is provided as a service to our customers. We do not create the contents of the information contained in this document. Should you have detailed questions pertaining to the information contained in this document, you may contact Michco, or the manufacturer which provided the original information in this electronic deliverable. Michco's only part in this electronic deliverable was the electronic assembly process.

You may contact Michco through the following methods:
Phone (517) 484-9312 or (800) 331-3339 MI, OH, IN only
2011 N. High St. -- Lansing, Michigan -- 48906
Fax: (517) 484-9836
Email: CustServ@Michco.com
Web site: www.Michco.Com
Parts Web site: www.FloorMachineParts.Com

Order Parts on Line at:
www.FloorMachineParts.Com

Directly to Parts & Service:
By Email: **Shop@Michco.com**
By Fax: (517) 702-2041
By Voice: Use numbers above.

Serving the Cleaning Industry Since 1922

Notice: All copyrighted material remains property of original owners, all trademarks are property of respective owners. Manuals are subject to Manufacturer's reproduction limitations. Originals or reproductions were provided by manufacturers through a request. We make no warranty as to the correctness of information provided in this document and you assume all risk.

Roamer™ 320B



PARTS LIST

Advance MODEL 320B(OBSOLETE)

This parts list is for machines after serial number 401615



**Nilfisk
Advance**

setting standards

5/91 FORM NO. 56042250

TABLE OF CONTENTS

<u>DESCRIPTION</u>	<u>PAGE</u>
Base & Housing	1-2
Impeller Housing	3-4
Intake Housing	5-6
Wiring Diagram	7-8

WHEN ORDERING PARTS

- * Use the 6 digit numbers from the "Part No." columns in this parts list.
- * Specify the model and serial number of the machine.
- * Use the space below to record the model and serial number for future reference.

Model _____ Serial No. _____

BASE & HOUSING

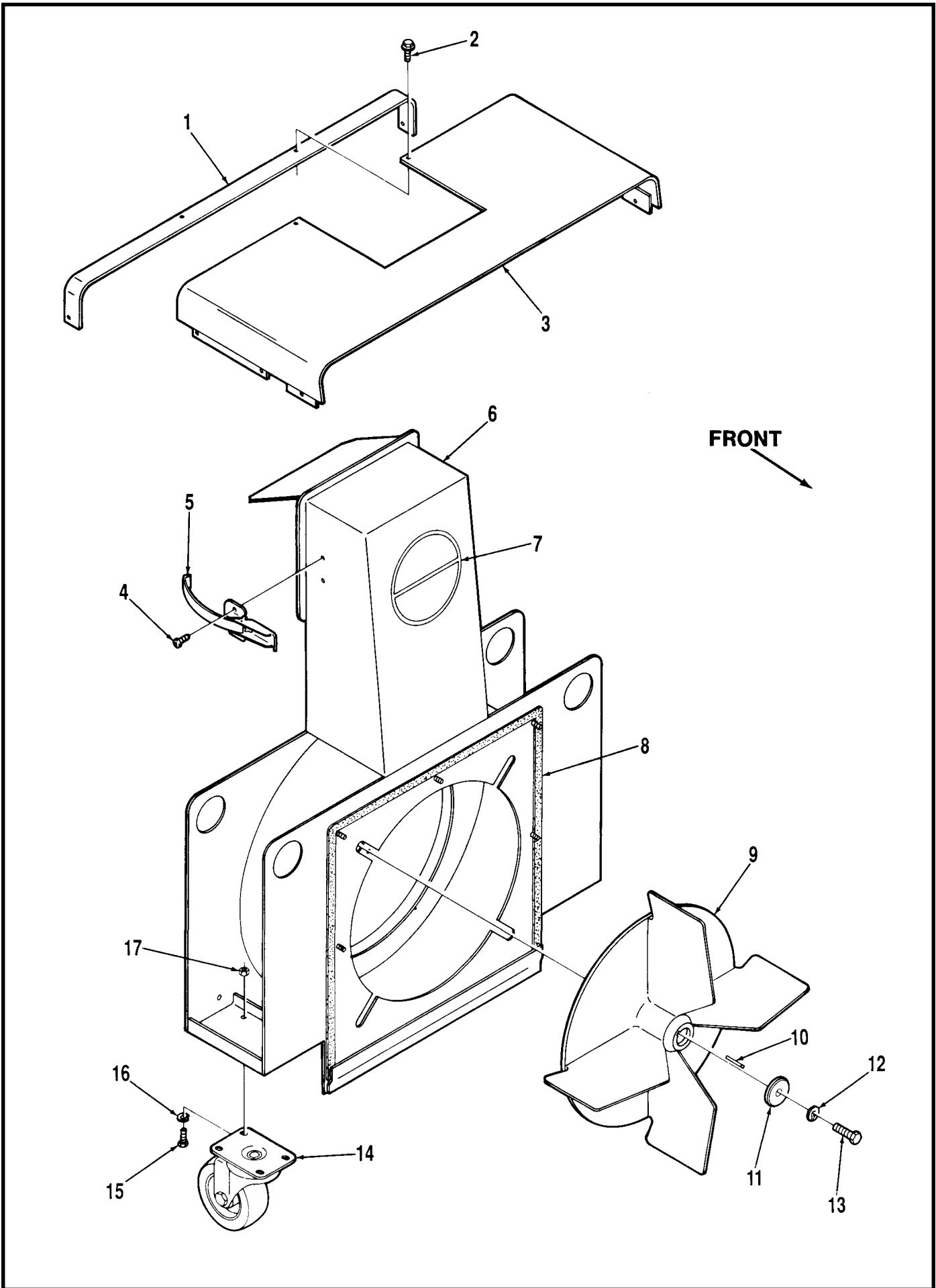
Item	Part No.	Qty	Description	Item	Part No.	Qty	Description
1	359834	1	Handle	48	151092	2	Bushing
2	016556	1	Decal, Wiring	49		2	#3-32 x 1/2 Screw
3	359844	1	Right Cover	50	150258	1	Plate
*	359845	1	Left Cover	51	358830	1	Lever
4	015020	1	Decal, Reset	52	057063	1	Decal, On-Off
5		6	1/4-20 x 1/2 Screw	53	256226	1	Rocker Switch
6	359848	1	Bracket	54	359831	1	Control Panel
7	386725	1	Circuit Breaker 50 Amp	55	157244	1	Button Plug
8		4	5/16-18 x 5/8 Bolt	*	054192	1	Decal, Charger
9	342017	1	Motor 24V	*	358754	1	Collector Bag
*	342021	1	Motor Brush Set for 342017	*	371599	8	Gasket (under batteries)
10	371394	1	Solenoid	*	372673	8	Battery Post Boot
11		6	1/4-20 Nut	**	359855	1	6" x 15' Hose and Wand Kit
12	359846	1	Left Inner Panel	**	359884	1	3" x 15' Hose and Wand Kit
13	359840	1	Base	**	358999	1	Safety Interlock Kit - shuts off motor when impeller cover or hose adapter is removed.
14	341924	1	Axle				
15	150290	2	Cable Coupler				
16		2	#6-32 x 1/2 Set Screw				
17		2	#10-24 x 3/16 Set Screw				
18		1	3/8-18 x 1-1/2 Bolt				
19	358832	1	Bracket				
20	159751	1	Pulley				
21	159794	1	Bushing				
22		1	3/8-18 Whiz Nut				
23		1	3/8 Washer				
24	159778	1	Bearing				
25	358951	1	Wire Rope				
26		6	5/16 Lock Washer				
27		4	5/16-18 Nut				
28	014361	2	Decal, Roamer				
29	014365	1	Decal, Right Stripe				
*	014366	1	Decal, Left Stripe				
30	350907	2	Fastener				
31		2	#6-32 x 1 Screw				
32	362883	2	Washer				
33	362336	2	Wheel				
34	367192	2	Washer				
35		2	5/16-18 x 3/4 Bolt				
36	358959	2	Washer				
37		26	#10-24 x 3/8 Self-tap Screw				
38		6	1/4-20 x 1-1/4 Screw				
39		8	#10-24 x 3/8 Screw				
*		8	#10 Washer				
*		8	#10-24 Nut				
40	359843	1	Right Panel				
*	359842	1	Left Panel				
41	359847	1	Right Inner Panel				
42		6	1/4-20 Nut				
43		6	1/4 Washer				
44	163007	1	Grommet				
45	359833	1	Panel Cover				
46		2	#3-32 Nut				
47		2	#3 Washer				

* = Not Shown

** = Optional Accessory

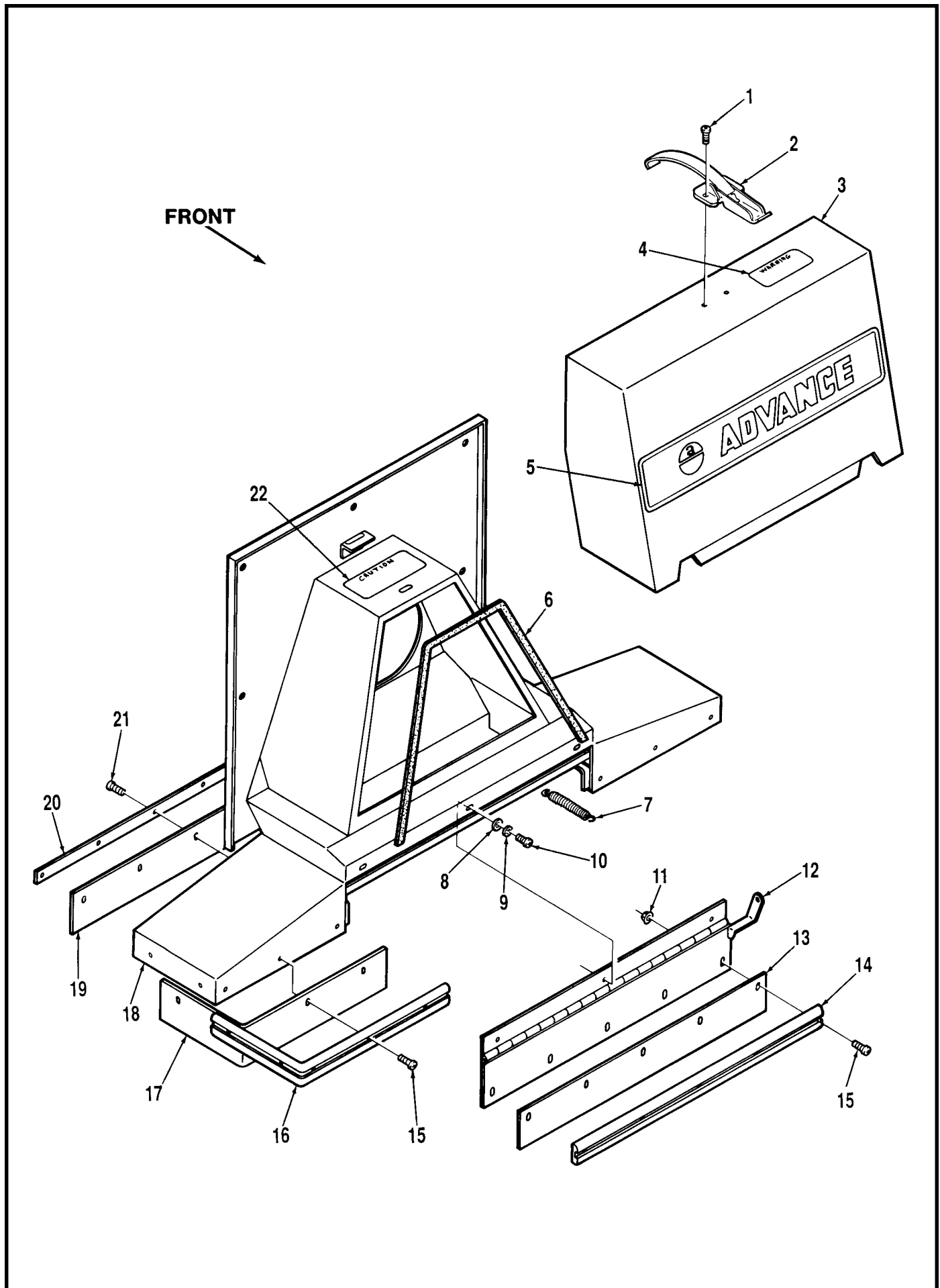
BATTERIES AND CHARGERS (not included)

376014	4	6V Battery
372947	1	Automatic Charger
372945	1	Semi- Automatic Charger



IMPELLER HOUSING

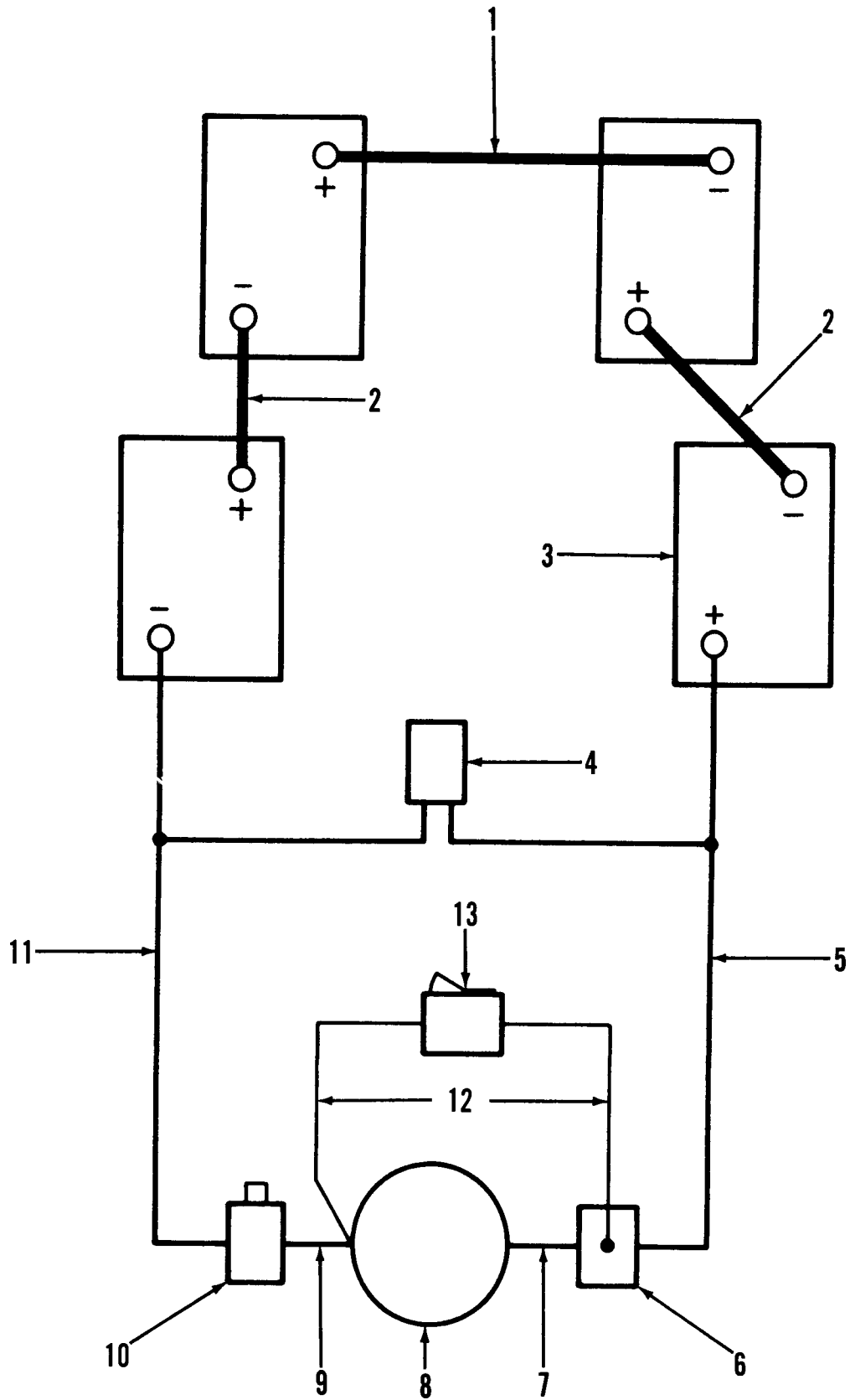
Item	Part No.	Qty	Description
1	359850	1	Support
2		2	#10-24 x 3/8 Screw
3	359849	1	Shroud
4		4	#10-24 x 1/2 Screw
5	371181	2	Clamp
6	358630	1	Impeller Housing
7	015326	1	Decal, Advance
8	300314	4'	Gasket (122 cm)
9	359841	1	Impeller
10	340863	1	Key
11	367117	1	Washer
12		1	3/8 Lock Washer
13		1	3/8-24 x 1-1/2 Bolt
14	206725	2	Caster
15		8	1/4-28 x 1/2 Screw
16		8	1/4 Lock Washer
17		8	1/4-28 Nut



INTAKE HOUSING

Item	Part No.	Qty	Description
1		2	#10-24 x 1-1/2 Screw
*		2	#10 Washer
*		2	#10-24 Nut
2	371181	1	Clamp
3	359839	1	Cover
4	015398	1	Decal, Warning
5	014357	1	Decal, Advance
6	320099	3'	Gasket (92 cm)
7	358560	1	Spring
8		3	1/4 Washer
9		3	1/4 Shakeproof Washer
10		3	1/4-20 x 1/2 Screw
11		15	#8-32 Nut
12	359837	1	Front Door
13	358556	1	Front Blade
14	358557	1	Front Bumper
15		15	#8-32 x 3/8 Screw
16	358563	2	Side Bumper
17	358561	2	Side Blade
18	359838	1	Intake Housing
19	340022	1	Rear Blade
20	340030	1	Rear Plate
21		7	#10-24 x 1/2 Screw
*		7	#10 Washer
*		7	#10-24 Nut
22	016594	1	Decal, Caution

* = Not Shown



WIRING DIAGRAM

Item	Part No.	Qty	Description
1	363936	1	Cable
2	363928	2	Cable
3	371246	4	6V Battery (not included)
4	359009	1	Charger Plug with Cables
5	363979	1	Cable (battery to solenoid)
6	371394	1	Solenoid
7	386236	1	Cable (solenoid to motor)
8	342017	1	Motor 24V
9	359382	1	Cable (motor to circuit breaker)
10	386725	1	Circuit Breaker 50 Amp
11	359384	1	Cable (battery to circuit breaker)
12	358967	1	Wire (switch to solenoid & motor)
13	356226	1	Rocker Switch