



# Electronic Service Manuals

This electronic document is provided as a service to our customers. We do not create the contents of the information contained in this document. Should you have detailed questions pertaining to the information contained in this document, you may contact Michco, or the manufacturer which provided the original information in this electronic deliverable. Michco's only part in this electronic deliverable was the electronic assembly process.

You may contact Michco through the following methods:  
Phone (517) 484-9312 or (800) 331-3339 MI, OH, IN only  
2011 N. High St. -- Lansing, Michigan -- 48906  
Fax: (517) 484-9836  
Email: [CustServ@Michco.com](mailto:CustServ@Michco.com)  
Web site: [www.Michco.Com](http://www.Michco.Com)  
Parts Web site: [www.FloorMachineParts.Com](http://www.FloorMachineParts.Com)

Order Parts on Line at:  
**[www.FloorMachineParts.Com](http://www.FloorMachineParts.Com)**

Directly to Parts & Service:  
By Email: **[Shop@Michco.com](mailto:Shop@Michco.com)**  
By Fax: (517) 702-2041  
By Voice: Use numbers above.

**Serving the Cleaning Industry Since 1922**

Notice: All copyrighted material remains property of original owners, all trademarks are property of respective owners. Manuals are subject to Manufacturer's reproduction limitations. Originals or reproductions were provided by manufacturers through a request. We make no warranty as to the correctness of information provided in this document and you assume all risk.

# Minitriever™

---



## **PARTS LIST** **Advance MODEL 56475007**

This parts list is for machines after serial number 1001666



**Nilfisk**  
**Advance**

*setting standards*

revised 10/00 Form Number 56042285

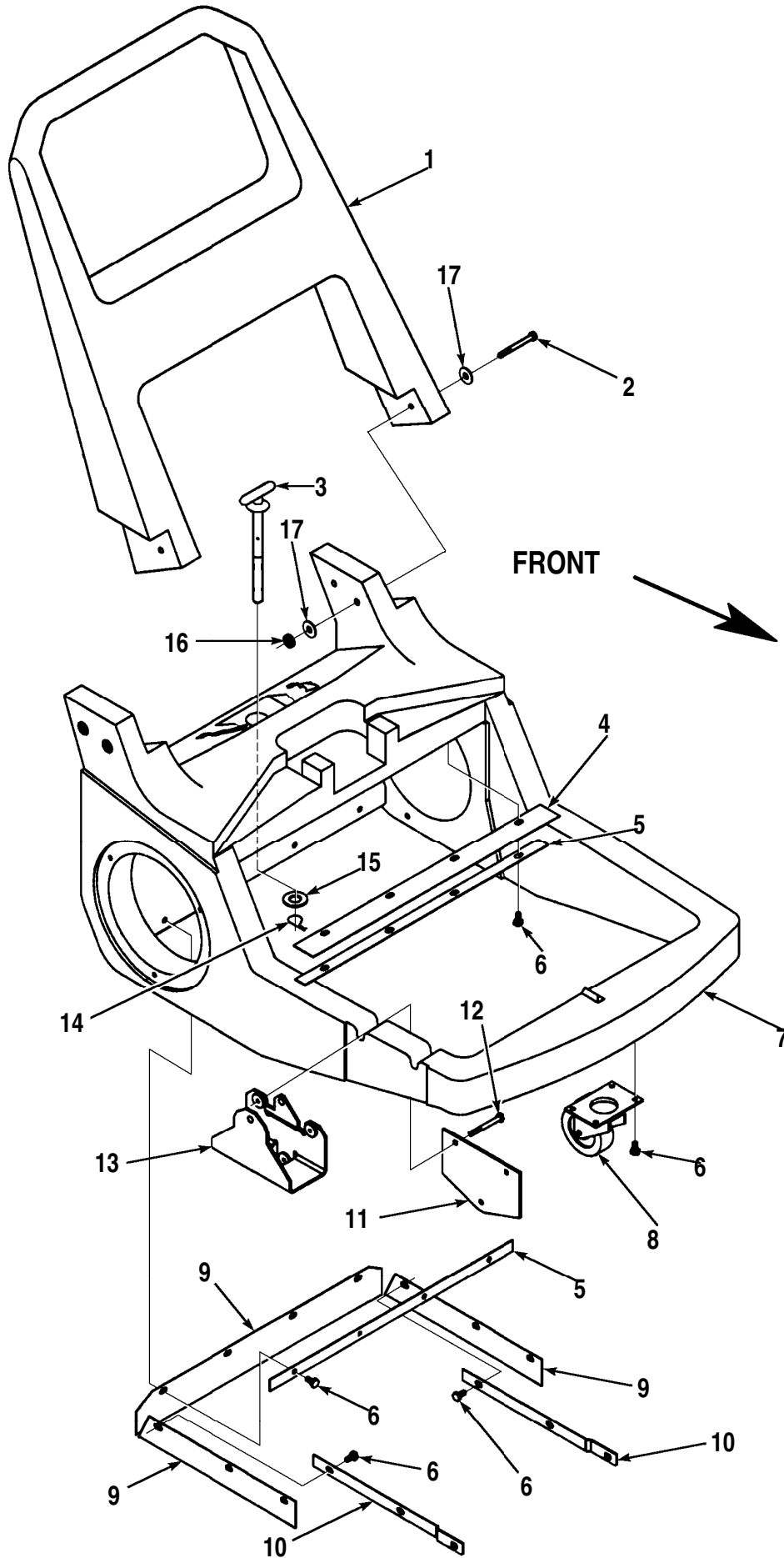
# TABLE OF CONTENTS

DESCRIPTION	PAGE
Chassis System-Chassis & Handle .....	1-2
Chassis System-Axle & Wheels .....	3-4
Hopper and Main Broom System .....	5-6
Side broom System .....	7-8

### WHEN ORDERING PARTS

- \* Use the 8 digit numbers from the "Ref. No." columns in this parts list.
- \* Specify the model and serial number of the machine.
- \* Use the space below to record the model and serial number for future reference.

Model \_\_\_\_\_ Serial No. \_\_\_\_\_

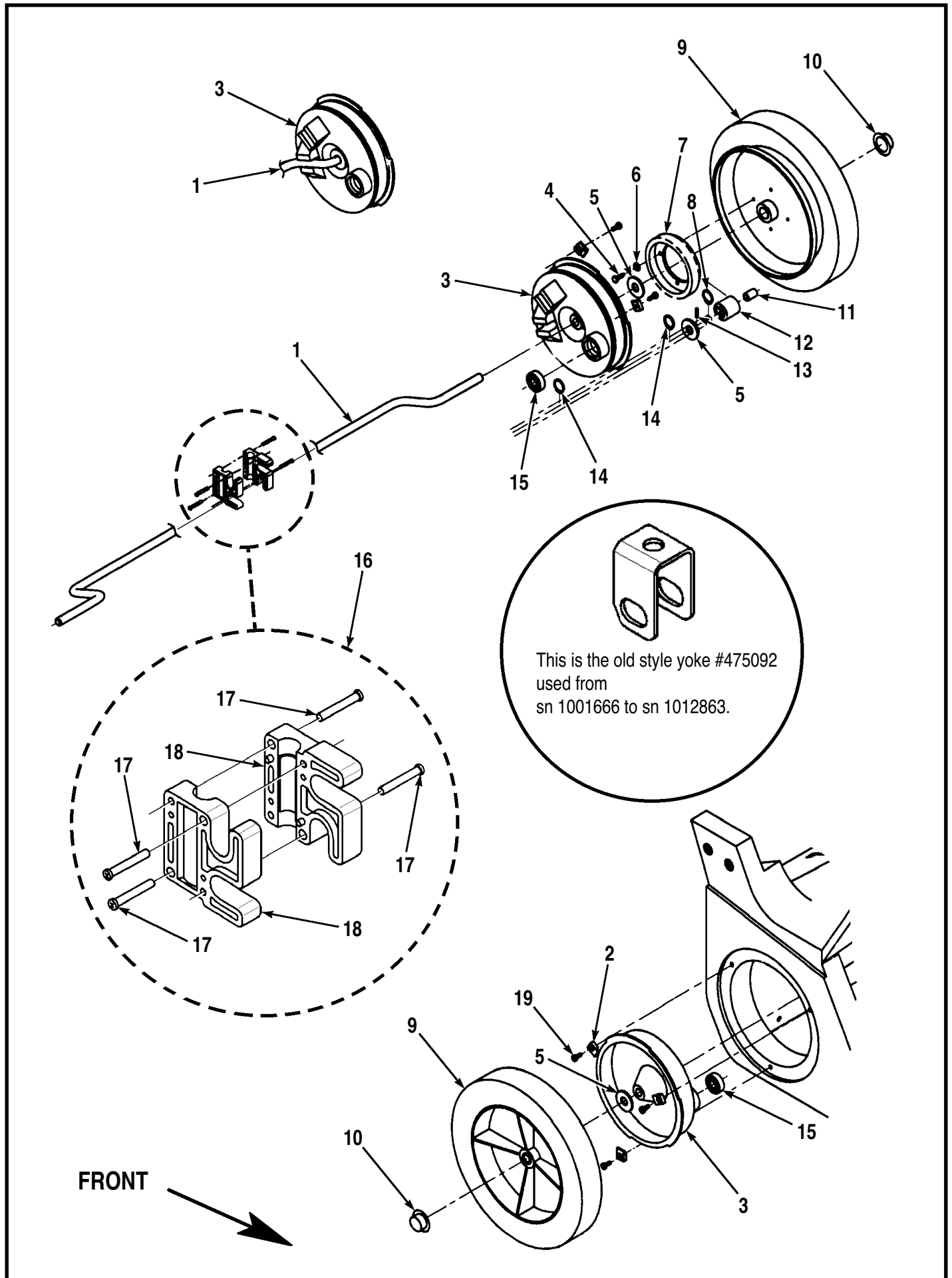


## CHASSIS SYSTEM - CHASSIS AND HANDLE

Item	Ref. No.	Qty	Description
1	56475077	1	Handle
2	56002606	4	Scr, Hex 5/16-18 x 3-1/4
3	56475052	1	Adjusting Screw <b>Note #1</b>
4	56475091	1	Hopper Top Seal
5	56475088	2	Strap
6	56003036	16	1/4-20 x 1/2 Loc Screw
7	56475078	1	Chassis
8	56475099	1	Swivel Caster
9	56475114	1	Skirt Kit <b>Note #2</b>
10	56475036	2	Strap
11	56475080	1	Mounting Plate
12	56003117	3	1/4-20 x 2 Loc Screw
13	56475081	1	Broom Arm Yoke
14	56003120	1	Cotter Hair Pin 1/4 x 1/2
15	56002168	1	1/2 Flat Washer
16	56002826	4	Nut, Hex Nyl Loc-Thin 5/16-18
17	56002220	8	Wsh, Flt Std 5/16

**Note #1:** All machines built after serial no. 1012863 will have this new style T-Handle adjusting screw. It will fit all Minitriever after serial no. 1001665. If you have a machine between serial nos. 1001666 and 1012863, order the **Minitriever Update Kit #56475029**. This kit will replace the adjusting screw (item 3/page 1), the old style yoke (page 3) and the chassis skirts (item 9/page 1) with higher quality more durable components.

**Note #2:** If your machine already has the new style yoke (item 16/page 3) and the new style T-Handle adjusting screw (item 3/page 1) and you do not need the entire **Minitriever Update Kit #56475029**, order this skirt kit to replace the previous skirts, No's. 56475084 & 56475098. This kit can be used on all Minitriever after serial no. 1001665.

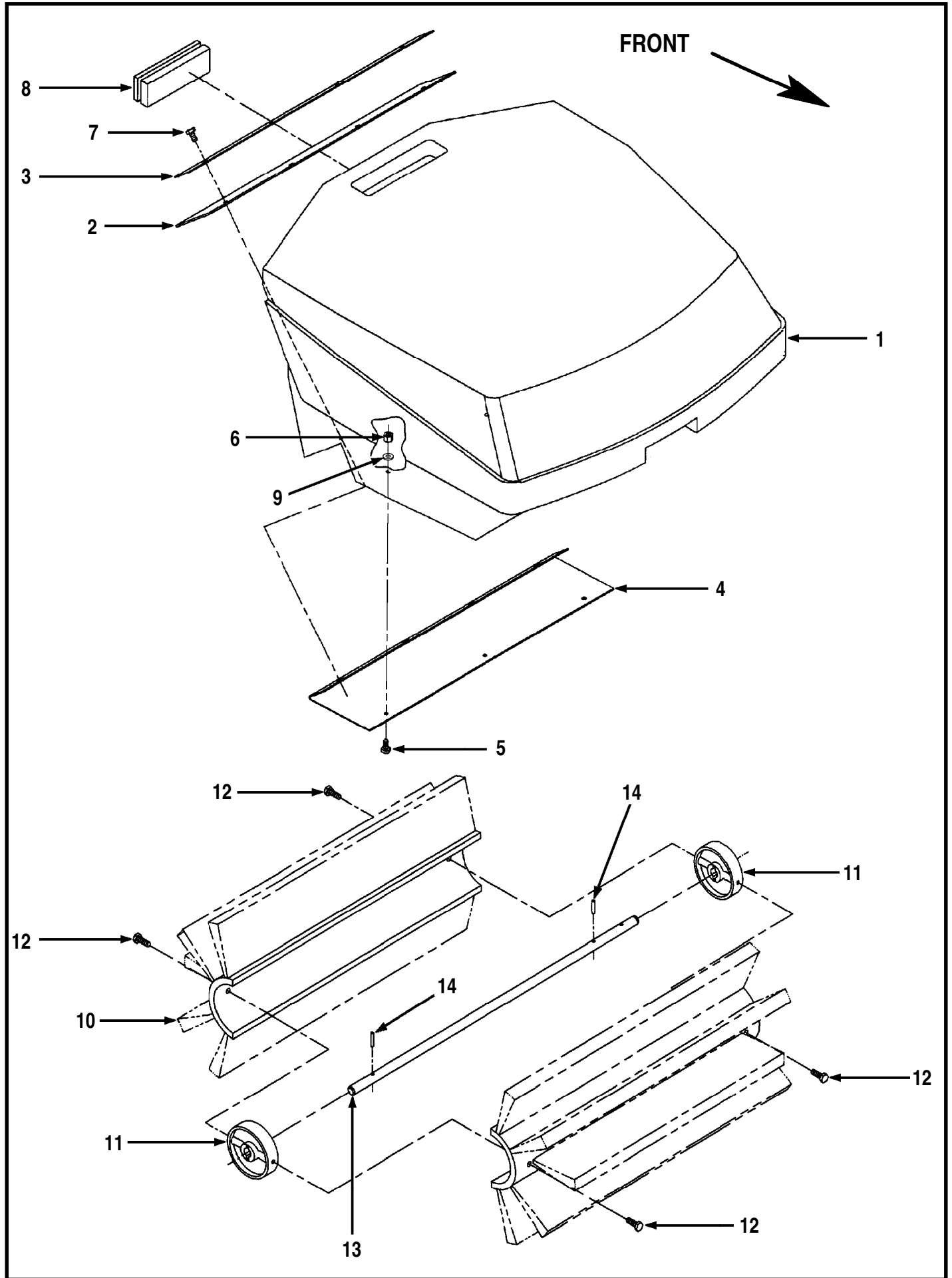


## CHASSIS SYSTEM - AXLE AND WHEELS

Item	Ref. No.	Qty	Description
1	56475054	1	Axle <b>TSB 686</b>
2	56475104	6	Tab
3	56475072	2	Support Hub
4	56009153	4	#10-24 x 1/2 Loc Screw
5	56166839	5	Thrust Bearing
6	56001954	4	#10 Flat Washer
7	56475066	1	Gear
8	56157066	1	Retainer Ring
9	56475227	2	Wheel Assy
*	56475432	2	Tire
*	56475226	2	Wheel Hub Rim
*	56475101	4	Bearing
10	56009097	2	Cap Nut <b>TSB 686</b>
11	56475110	1	Bearing <b>TSB 686</b>
12	56475064	1	Pinion <b>TSB 686</b>
13	56003116	1	1/8 x 5/8 Pin
14	56003255	2	Retainer Ring
15	56475108	2	Bearing
16	56475112	1	Yoke Kit <b>Note #1</b>
17	56003112	4	#10-14 x 1 Plastite Screw
18	56475111	2	Yoke
19	56009139	6	#10-24 x 3/8 Loc Screw

\* = Not Shown

**Note #1:** All machines built after serial no. 1012863 will have this new style yoke kit. It will fit all Minitriever after serial no. 1001665. This yoke kit replaces the previous old style yoke #56475092 (shown on page 3). If you have a machine between serial nos. 1001666 and 1012863 order the **Minitriever Update Kit #56475029**. This kit will replace the adjusting screw (item 3/page 1), the old style yoke (page 3) and the chassis skirts (item 9/page 1) with higher quality more durable components.



## HOPPER AND MAIN BROOM SYSTEM

Item	Ref. No.	Qty	Description
1	56475076	1	Hopper <b>TSB 652</b>
2	56475082	1	Hopper Lip <b>TSB 652</b>
3	56475089	1	Hopper Strap <b>TSB 652</b>
4	56475090	1	Hopper Lip Plate <b>TSB 652</b>
5	56002829	3	1/4-20 x 5/8 Screw
6	56002768	3	1/4-20 Nyl Loc Nut
7	56009038	4	#10-24 x 7/8 HP-5 Screw
8	56475106	1	Breather
9	56001954	3	#10 Flat Washer
10	56505611	1	Main Broom
11	56475068	2	Broom Mounting Disc
12	56009149	4	1/4-14 x 1 Screw
13	56475056	1	Broom Shaft <b>TSB 686</b>
14	56003114	2	5/32 x 7/8 Pin



**SIDE BROOM SYSTEM**

Item	Ref. No.	Qty	Description
1	56475179	1	Side Broom
2	56475055	1	Bumper Disc
3	56475108	2	Bearing
4	56475070	1	Pulley
5	56475122	1	Belt
6	56330741	2	Bushing
7	56475408	2	Guide Wheel
8	56475102	1	Broom Arm
9	56475094	1	Adjusting Screw <b>TSB 686</b>
10	56009017	2	1/2 Flat Washer
11	56002770	1	1/2-13 Nyl Loc Nut
12	56001920	1	1/2-13 x 2-1/4 Bolt
13	56002708	2	1/4-20 Nyl Loc Nut
14	56002825	2	1/4-20 x 1-1/4 Screw
15	56002948	3	1/4-20 x 3/4 Screw
16	56003039	1	1/4-20 x 1/2 Screw
17	56367206	1	Bushing
18	56002098	3	1/4 Flat Washer



Nilfisk-Advance, Inc.  
14600 21st Avenue North  
Plymouth, MN, 55447-3408  
[www.nilfisk-advance.com](http://www.nilfisk-advance.com)  
Phone: 800-989-2235  
Fax: 800-989-6566  
©2000 Nilfisk-Advance, Inc.,  
Plymouth, MN 55447-3408  
Printed in the U.S.A.