



Electronic Service Manuals

This electronic document is provided as a service to our customers. We do not create the contents of the information contained in this document. Should you have detailed questions pertaining to the information contained in this document, you may contact Michco, or the manufacturer which provided the original information in this electronic deliverable. Michco's only part in this electronic deliverable was the electronic assembly process.

You may contact Michco through the following methods:
Phone (517) 484-9312 or (800) 331-3339 MI, OH, IN only
2011 N. High St. -- Lansing, Michigan -- 48906
Fax: (517) 484-9836
Email: CustServ@Michco.com
Web site: www.Michco.Com
Parts Web site: www.FloorMachineParts.Com

Order Parts on Line at:
www.FloorMachineParts.Com

Directly to Parts & Service:
By Email: **Shop@Michco.com**
By Fax: (517) 702-2041
By Voice: Use numbers above.

Serving the Cleaning Industry Since 1922

Notice: All copyrighted material remains property of original owners, all trademarks are property of respective owners. Manuals are subject to Manufacturer's reproduction limitations. Originals or reproductions were provided by manufacturers through a request. We make no warranty as to the correctness of information provided in this document and you assume all risk.

Retriever™ 360B



PARTS LIST

Advance MODEL 56468450(OBSOLETE)

This parts list is for machines after serial number 377088



**Nilfisk
Advance**

setting standards

2/90 revised 2/01 FORM NO. 56042218

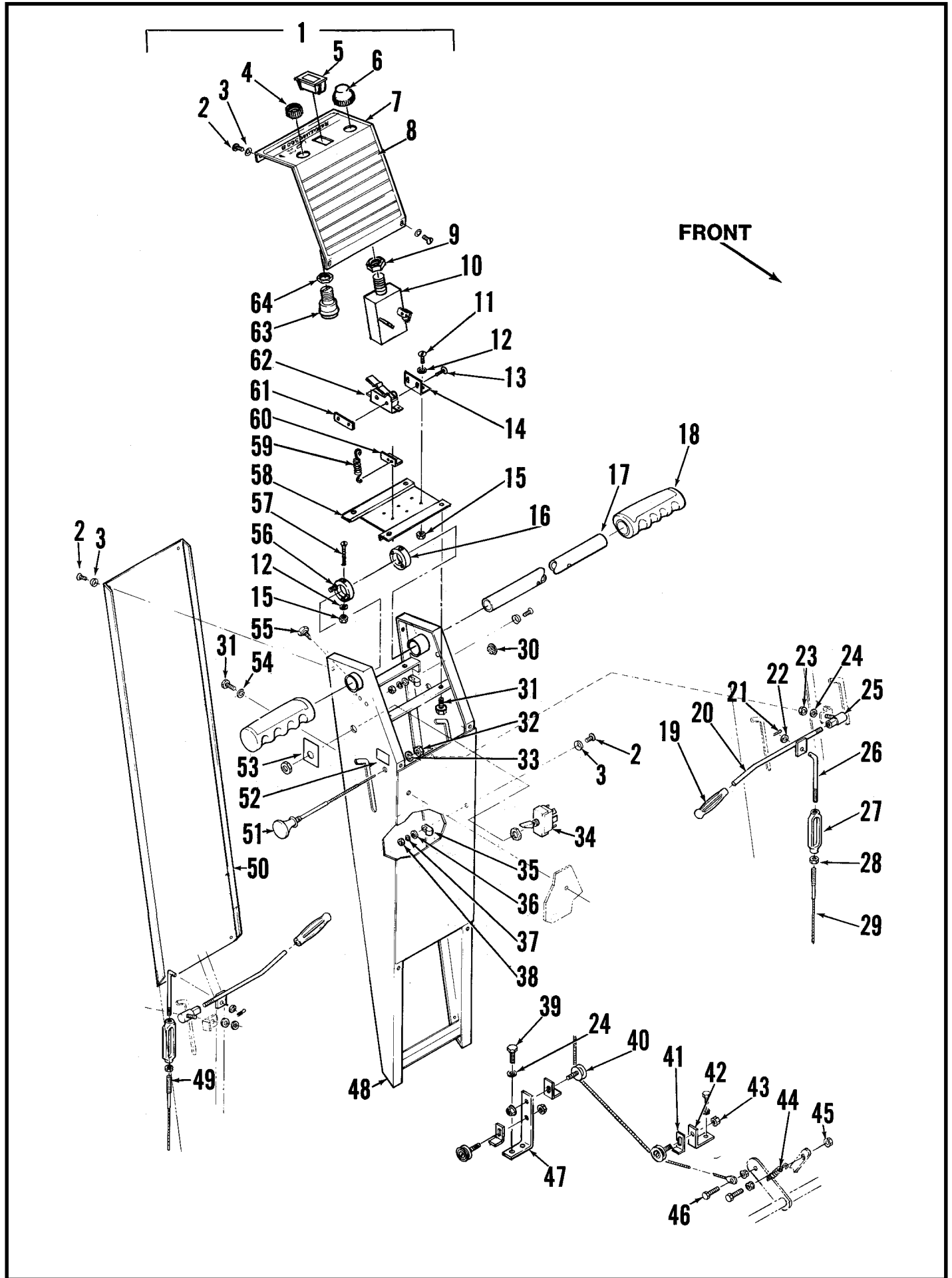
TABLE OF CONTENTS

<u>DESCRIPTION</u>	<u>PAGE</u>
Control Handle Assembly	1-2
Chassis	3-4
Filter Housing And Hood Assembly	5-6
Main Broom And Impeller Assembly	7-8
Hopper And Side Broom Assembly	9-10
Drive Wheel Assembly	11-12
Wiring Diagram And Electrical Panel.....	13-14

WHEN ORDERING PARTS

- * Use the 6 digit numbers from the "Part No." columns in this parts list.
- * Specify the model and serial number of the machine.
- * Use the space below to record the model and serial number for future reference.

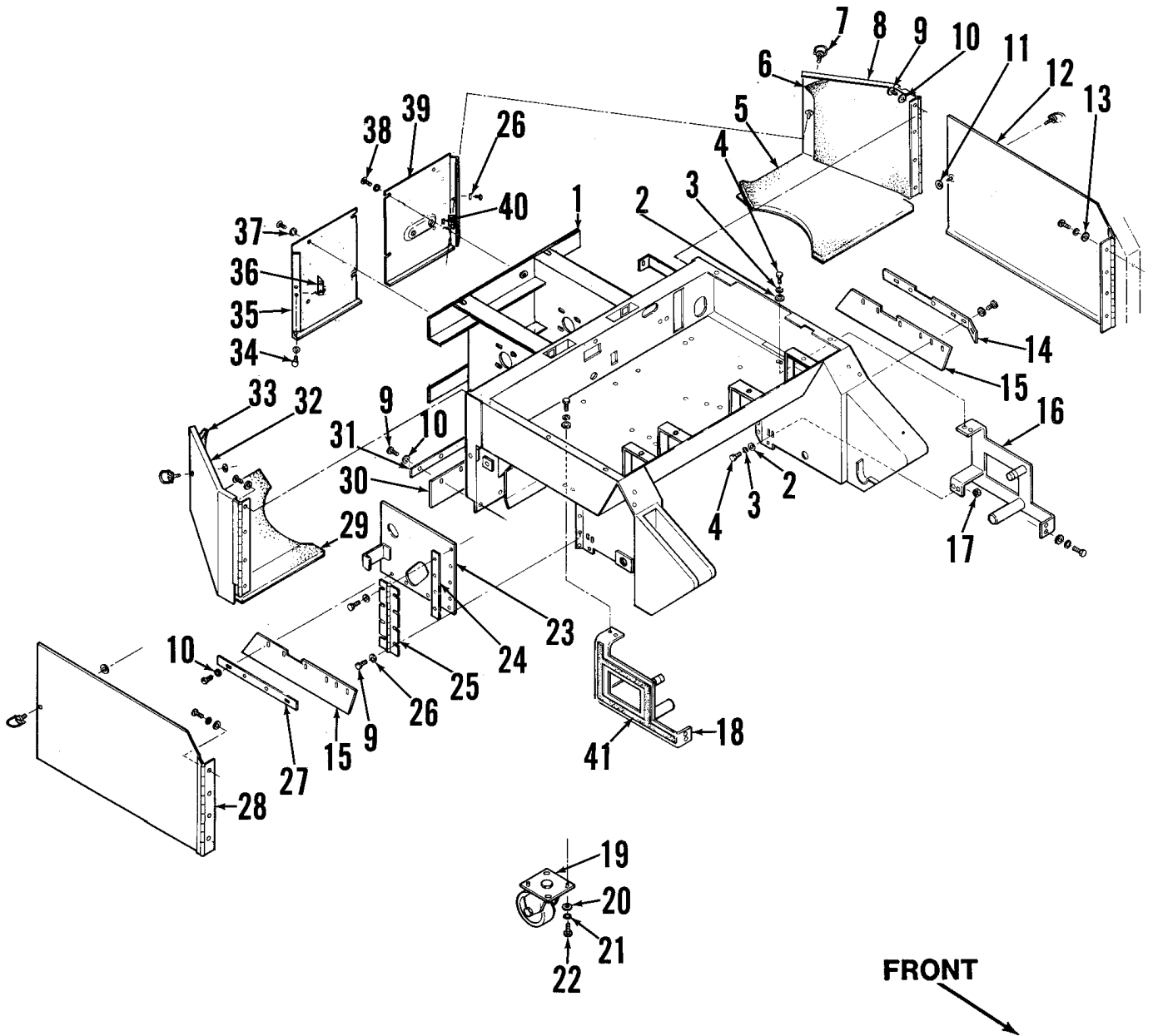
Model _____ Serial No. _____



CONTROL HANDLE ASSEMBLY

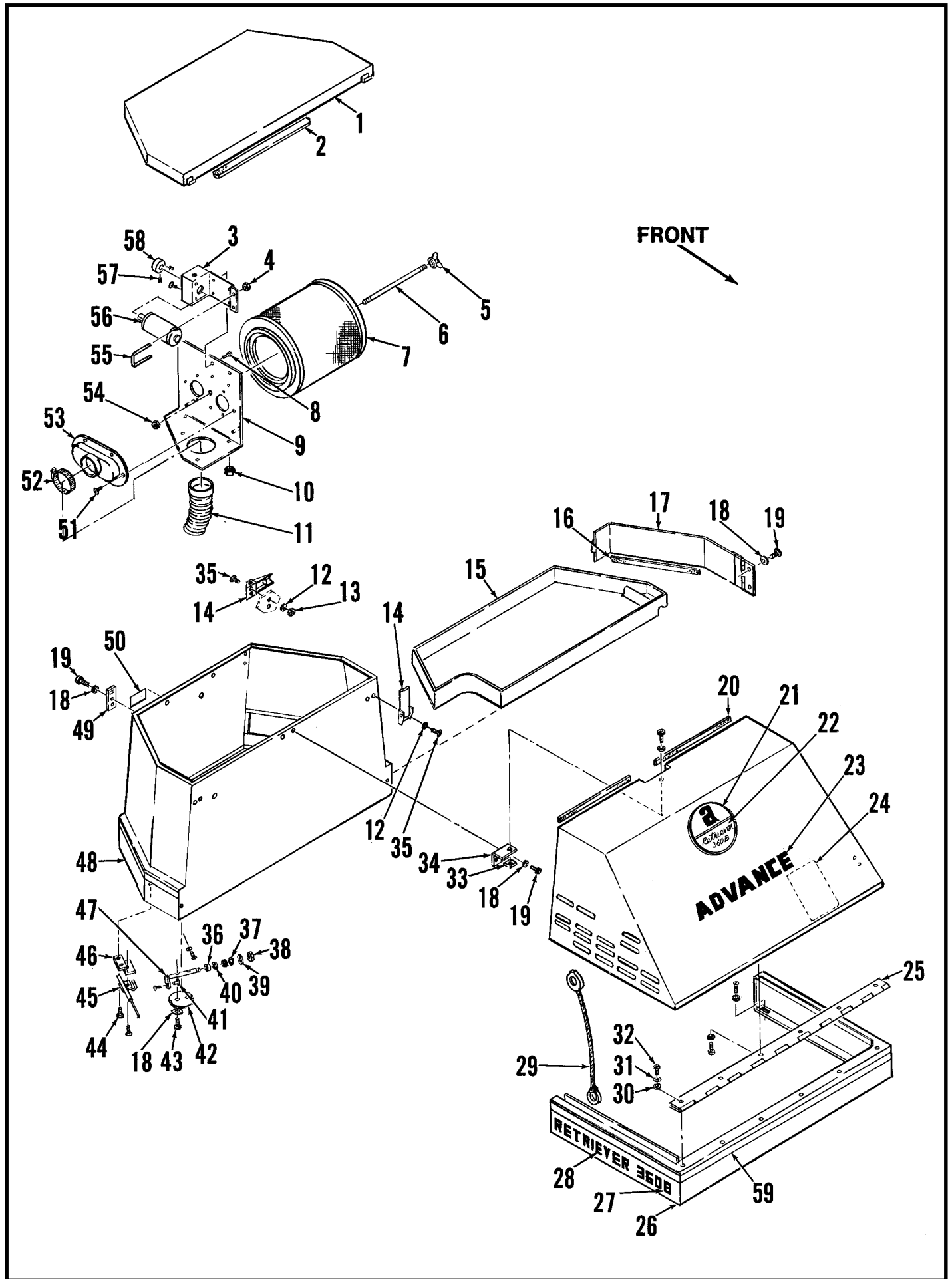
Item	Part No.	Qty	Description	Item	Part No.	Qty	Description
1	468388	1	Control Handle Assembly (#2-64)	36		2	#10 Washer
2		10	#10-24 x 3/8 Screw	37		2	#10 Lock Washer
3	449340	10	Washer	38		2	#10-24 Nut
4		1	3/4-20 Nut	39		2	5/16-18 x 1/2 Bolt
5	467410	1	Indicator Light	40	159749	3	Pulley
6		1	5/8-32 Nut	41	390778	3	Cable Guide
7	468369	1	Control Panel	42	468085	1	Bracket
8	025123	1	Decal, Control Panel	43		4	7/16-14 Nut
9		1	5/8-32 Nut	44	470672	2	Spring
10	468175	1	Switch	45		3	1/4-20 Nut
11		6	#10-24 x 1/2 Screw	46		2	1/4-20 x 7/8 Screw
12		7	#10 Shakeproof Washer	47	468087	1	Bracket
13		6	#6-32 x 1 Screw	48	468377	1	Handle
14	468213	3	Switch Plate	49	472191	1	Broom Cable
15		7	#10-24 Nut	50	468378	1	Back Panel
16	468223	1	Collar	51	469034	1	Control Cable
17	468211	1	Handle Tube	52	025090	1	Decal, Wet Sweep
18	514085	2	Grip	53	023316	1	Decal, On/Off
19	471193	2	Grip	54		5	1/4 Lock Washer
20	471523	2	Rod	55	234079	1	Screw
21		2	1/16 x 1 Cotter Pin	56	468219	1	Collar
22		2	1/4 Washer	57		2	#10-24 x 1 3/4 Screw
23		2	5/16-24 Nut	58	468376	1	Plate
24		8	5/16 Lock Washer	59	328790	2	Spring
25	477756	2	Ball Joint	60	467585	1	Spring Plate
26	350079	2	Rod	61	376015	3	Nut Plate
27	206814	2	Turnbuckle	62	385615	3	Switch
28		2	1/4-20 Nut	63	441538	1	Switch
29	469042	1	Brake Cable		441539	1	Replacement Key
30	153648	1	Plug	64		1	3/4-20 Nut
31		9	1/4-20 x 1/2 Screw	*	469534	1	Handle Wiring Harness
32		1	3/8-24 Nut				
33		1	3/8 Lock Washer				
34	754092	1	Switch				
35	152617	2	Cable Clamp				

* = Not Shown



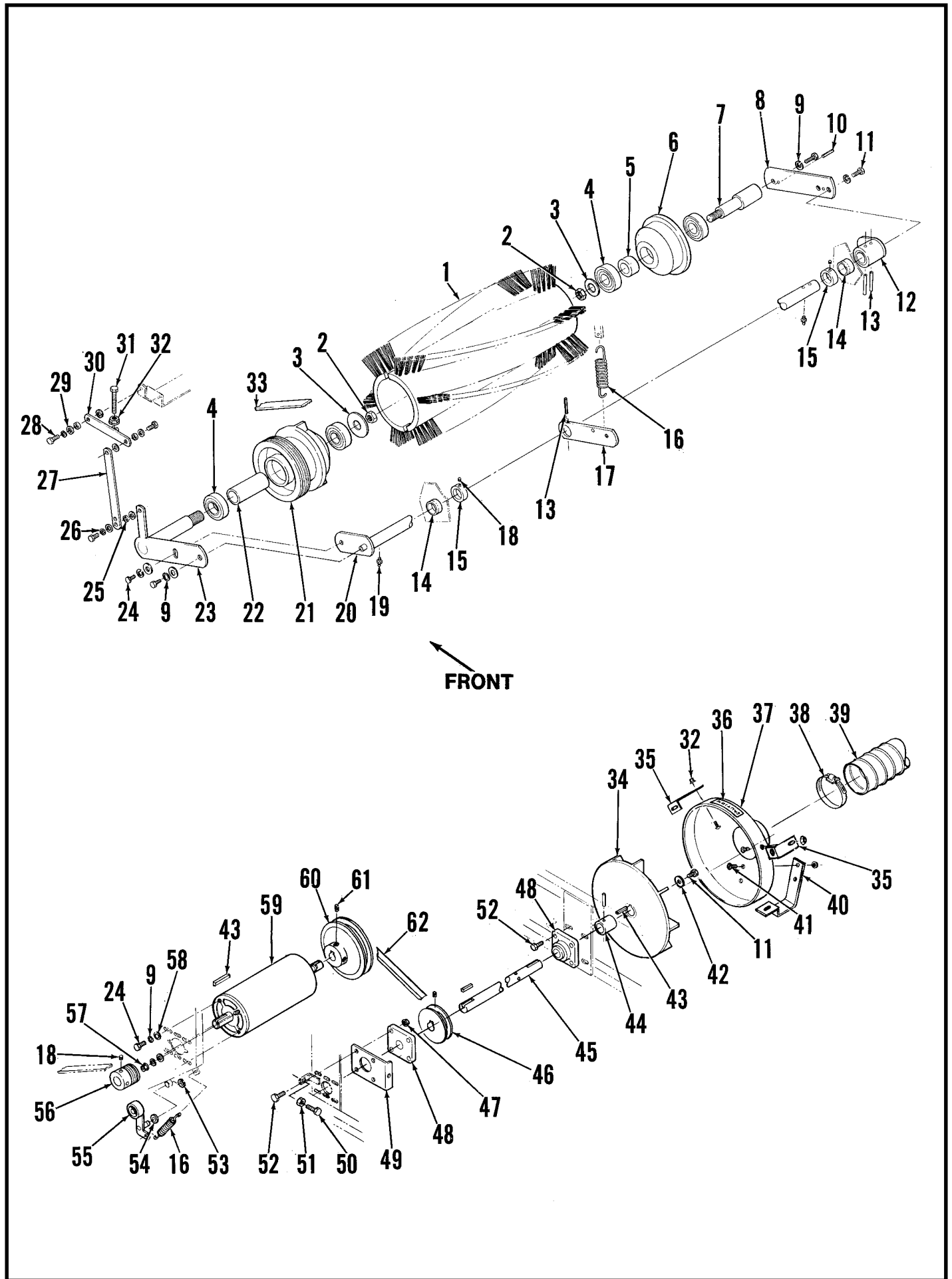
CHASSIS

Item	Part No.	Qty	Description	Item	Part No.	Qty	Description
1	468051	1	Chassis	23	469092	1	Broom Door
2		12	1/4 Washer	24	469096	1	Spacer
3		12	1/4 Lock Washer	25	469098	1	Hinge
4		12	1/4-20 x 5/8 Screw	26		18	#10 Washer
5	469550	1	Foam	27	469316	1	Guard
6	469556	1	Foam	28	469606	1	Right Door
7	448104	5	Screw	29	469552	1	Foam
8	469602	1	Left Door	30	470598	1	Skirt
9		40	#10-24 x 1/2 Screw	31	470604	1	Guard
10		40	#10 Shakeproof Washer	32	469604	1	Right Door
11	448108	5	Retaining Washer	33	469554	1	Foam
12	469608	1	Left Door	34		4	#10-24 x 3/8 Screw
13		18	#10 Washer	35	469616	1	Right Panel
14	469318	1	Guard	36	448109	2	Mounting Plate
15	469314	2	Skirt	37	449340	15	Washer
16	468820	1	Left Axle	38		12	#10-24 x 5/16 Screw
17		12	1/4-20 Nut	39	469614	1	Left Panel
18	468836	1	Right Axle	40		4	#10-24 Nut
19	440450	1	Caster	41	200754	2	Gasket
20		4	3/8 Washer				
21		4	3/8 Lock Washer				
22		4	3/8-16 x 3/4 Bolt				



FILTER HOUSING AND HOOD ASSEMBLY

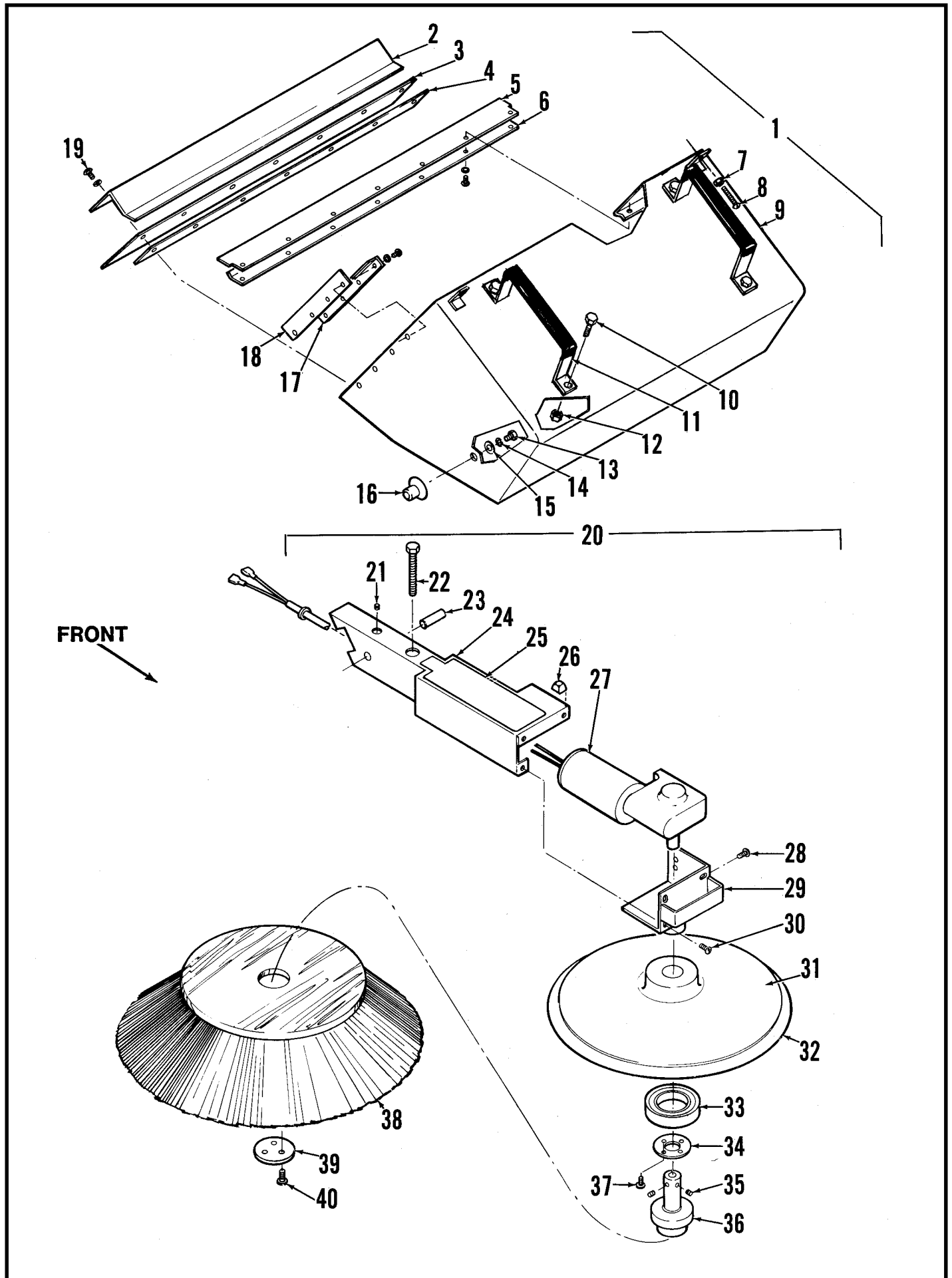
Item	Part No.	Qty	Description	Item	Part No.	Qty	Description
1	468354	1	Cover	31		8	#10 Shakeproof Washer
2	200754	1	Gasket	32		8	#10-24 x 3/8 Screw
3	468331	1	Motor Mount	33	468960	1	Screw Receptacle
4	469021	2	Nut	34	469231	1	Bracket
5	468015	1	Nut	35		6	#6-32 x 1/2 Screw
6	468021	1	Filter Stud	36	232181	1	Bushing
7	468019	1	Filter Element	37	163767	1	Washer
8		8	1/4-20 x 3/4 Screw	38	481708	1	Nut
9	468011	1	Filter Mount	39		1	3/8 Washer
10		3	1/4-20 Nut	40	329098	2	Bushing
11	469370	1	Hose	41	442445	1	Swivel
12		8	#6 Shakeproof Washer	42	469208	1	Plate
13		6	#6-32 Nut	43		2	#6-32 x 5/16 Screw
14	471194	3	Latch	44		2	#10-24 x 1/2 Screw
15	469216	1	Tray	45	468522	1	Cable Clamp
16	200754	1	Gasket	46	469366	1	Cable Bracket
17	468364	1	Door	47	469214	1	Lever
18		10	#8 Washer	48	468357	1	Filter Housing
19		10	#8-32 x 1/2 Screw	49	468762	2	Plate
20	209434	2	Gasket	50	024976	1	Decal, Main Broom
21	024958	1	Emblem, Advance Logo	51		8	#10-32 x 1/2 Screw
22	025139	1	Decal, 360B Insert	52	352829	1	Hose Clamp
23	016543	1	Decal, Advance	53	468017	1	Hose Mount
24	025131	1	Decal, Wiring	54		2	7/16-20 Nut
25	468368	1	Hinge	55	468329	1	U-Bolt
26	468367	1	Base	56	468176	1	Shaker Motor 24V
27	025231	2	Decal, B	*	491823	1	Carbon Brush Kit (for 468176)
28	025237	2	Decal, Retriever 360	57		2	#10-24 x 3/8 Screw
29	755830	1	Wire Rope	58	491822	1	Eccentric
30		8	#10 Washer	59	014645	2	Decal, Stripe



MAIN BROOM AND IMPELLER ASSEMBLY

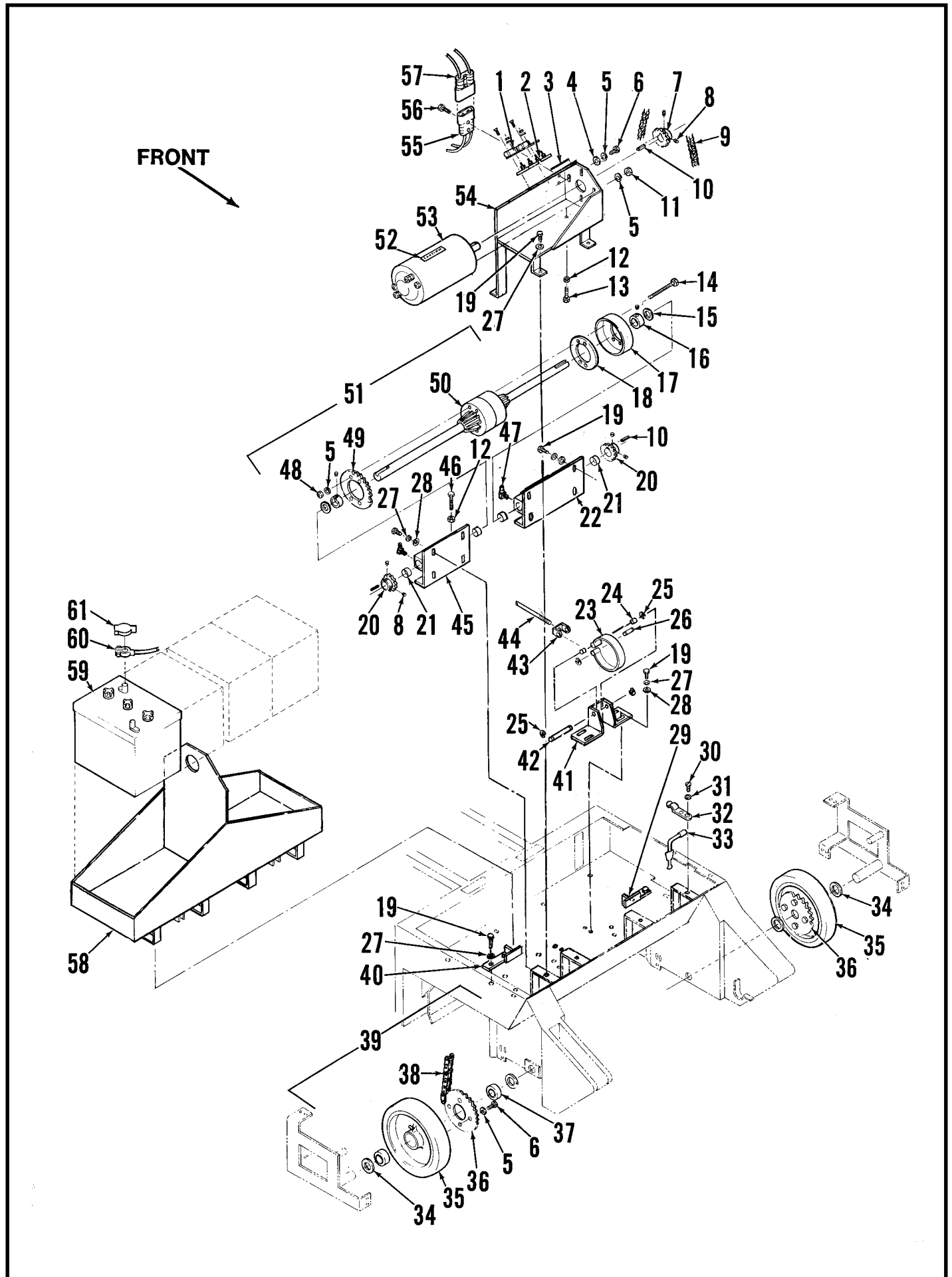
Item	Part No.	Qty	Description	Item	Part No.	Qty	Description
1	475024	1	Main Broom (Standard)	34	469347	1	Impeller
	474936	1	Main Broom (Optional)	35	468081	2	Shroud Support
	505609	1	Main Broom (Optional)	36	030080	1	Decal, Hands Clear
2		2	3/4-10 Nut	37	469346	1	Impeller Shroud
3		2	3/4 Washer	38	352829	1	Hose Clamp
4	479430	4	Bearing	39	469370	1	Hose
5	470728	1	Bushing	40	468083	1	Shroud Support
6	470636	1	Idler Lug	41		4	1/4-20 x 1/2 Screw
	469050	1	Idler Lug Assembly (#4-10)	42	152781	1	Washer
7	469056	1	Shaft	43	740168	3	Key
8	469052	1	Plate	44	469393	1	Spacer
9		5	5/16 Lock Washer	45	468089	1	Impeller Shaft
10	469054	2	Pin	46	465442	1	Sheave
11		3	5/16-18 x 3/4 Bolt	47		8	3/8-16 Nut
12	469057	1	Arm	48	469242	2	Bearing
13		3	3/16 x 1 1/4 Pin	49	469336	1	Clamp
14	441406	2	Bearing	50		1	5/16-18 x 2 Bolt
15	367095	2	Collar	51		1	5/16-18 Nut
16	470672	2	Spring	52		8	3/8-16 x 1 1/4 Bolt
17	472189	1	Bar	53	321427	1	Retaining Ring
18		10	5/16-18 x 1/4 Set Screw	54		1	3/8 Washer
19	101737	2	Grease Fitting	55	469390	1	Idler
20	469060	1	Shaft	56	756061	1	Sheave
21	470642	1	Drive Lug Pulley	57		4	5/16-18 Nut
	468197	1	Lug Assembly (#4/21-23)	58		4	5/16 Washer
22	470730	1	Bushing	59	469504	1	Motor 24V
23	468200	1	Shaft		342021	1	Brush Set
24		4	5/16-18 x 1 Bolt	60	468093	1	Sheave
25	368989	3	Bushing	61		2	1/4-20 x 1/2 Screw
26		3	1/4 Shakeproof Washer	62	468356	1	Belt
27	468244	1	Bar				
28		3	1/4-20 x 5/8 Screw	*	468736	1	Vacuum Wand Kit (optional)
29		14	1/4 Washer				
30	472157	1	Bar				
31		1	1/4-20 x 1 1/2 Screw				
32		8	1/4-20 Nut				
33	470630	1	Belt				

* = Not Shown



HOPPER AND SIDE BROOM ASSEMBLY

Item	Part No.	Qty	Description	Item	Part No.	Qty	Description
1	468181	1	Hopper Assembly (#2-19)	24	469624	1	Brush Arm
2	468679	1	Bracket	25	025050	1	Decal, Side Broom
3	468677	1	Skirt	26	382566	1	Bumper
4	468688	1	Back Up Plate	27	469530	1	Motor Assembly 24V
5	468672	1	Skirt		471129	1	Brush Set
6	472114	1	Guard		471167	1	Fiber Gear
7		2	5/16-18 Nut		471125	1	Gear Unit
8		2	5/16-18 x 2 Bolt	28		4	1/4-20 x 3/8 Screw
9	468182	1	Hopper	29	469626	1	Mounting Bracket
10		4	1/4-20 x 1/2 Screw	30		3	#10-24 x 5/8 Screw
11	468280	2	Handle	31	469628	1	Side Broom Guide
12		4	1/4-20 Nut	32	470648	1	Bumper
13		2	3/8-16 x 1/2 Bolt	33	470656	1	Bearing
14		2	3/8 Lock Washer	34	470773	1	Washer
15		2	3/8 Washer	35		2	1/4-20 x 1/4 Screw
16	472110	2	Stud	36	470796	1	Brush Adapter
17	468681	2	Guard	37		4	#8-32 x 1/2 Screw
18	468680	2	Gasket	38	473936	1	Side Broom
19		22	#10-24 x 1/2 Screw	39	473871	1	Washer
20	469622	1	Brush Arm Assembly (#21-37)	40		3	1/4-20 x 1 Screw
21		2	1/4-20 x 3/8 Set Screw				
22	470800	1	Bolt				
23	470812	1	Pin				

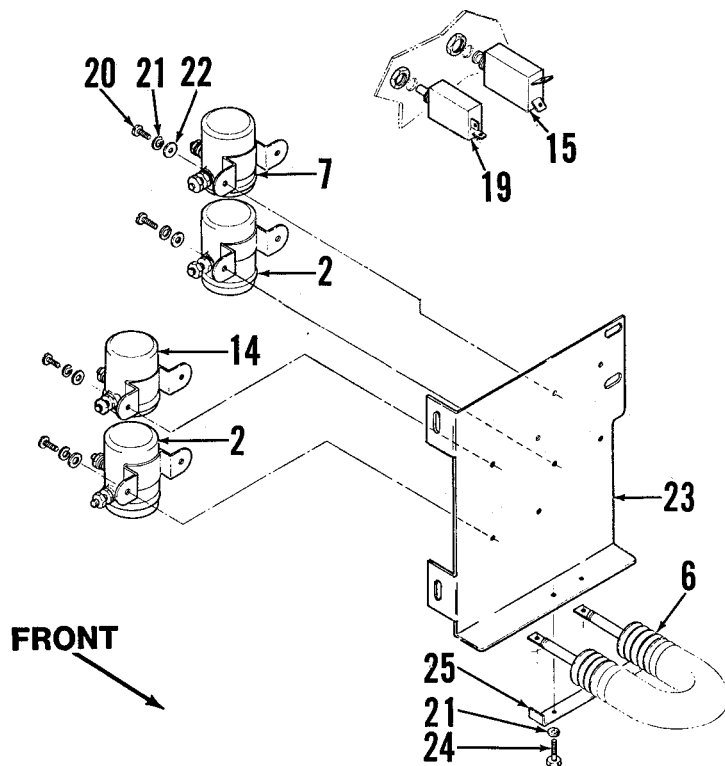
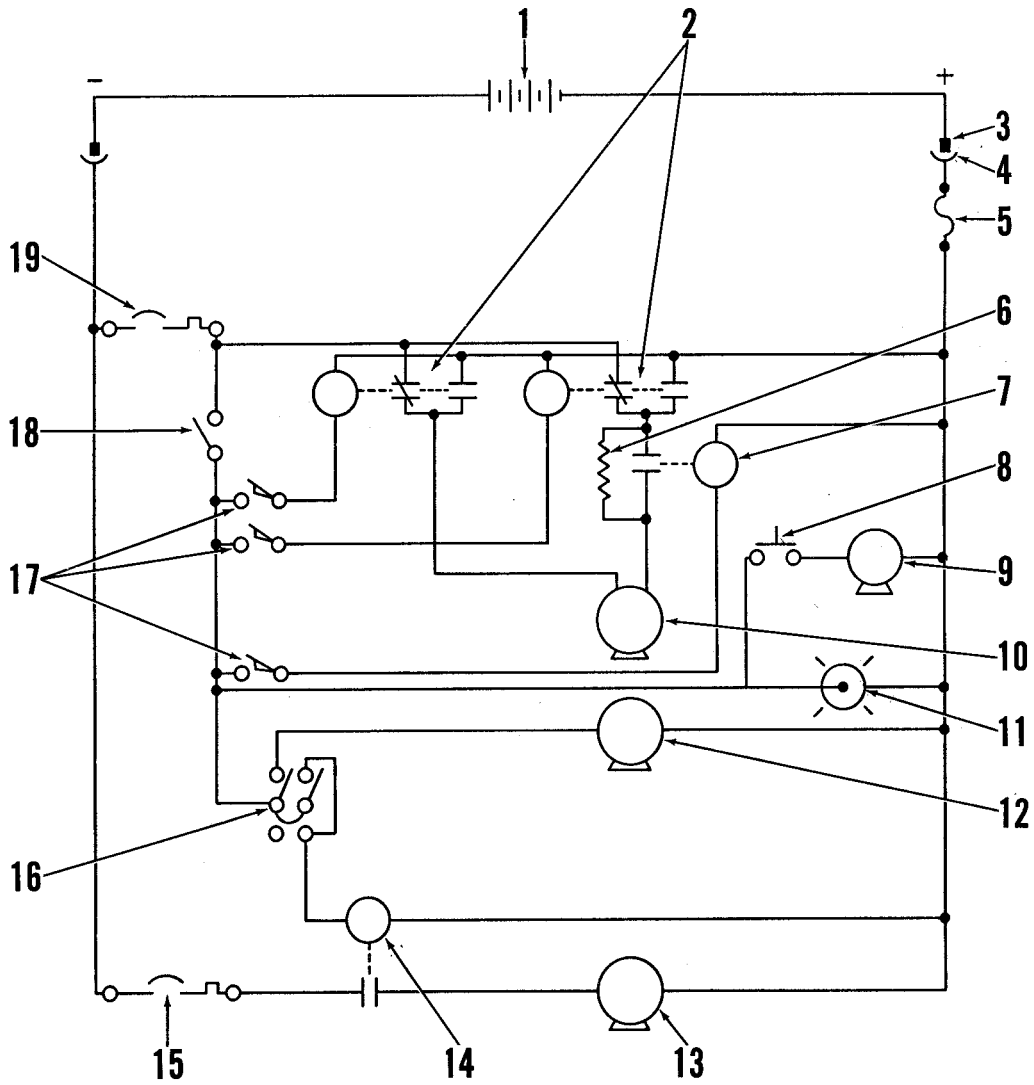


DRIVE WHEEL ASSEMBLY

Item	Part No.	Qty	Description	Item	Part No.	Qty	Description
1	448733	1	70A Fuse	36	470576	2	Sprocket
2	448741	1	Fuse Block	37	362352	4	Bearing
3	054192	1	Decal, Charger	38	468830	2	Chain
4		10	5/16 Washer	39	470577	2	Wheel Assembly (#35-37)
5		12	5/16 Lock Washer	40	468174	1	Right Battery Stop
6		10	5/16-18 x 3/4 Bolt	41	468159	1	Brake Anchor
7	470790	1	Sprocket	42	468161	1	Pin
8		8	1/4-20 x 3/8 Set Screw	43	402971	1	Bracket
9	467414	1	Chain	44	469042	1	Brake Cable
10	443719	3	Key	45	468041	1	Right Differential Support
11		2	5/16-18 Nut	46		2	1/4-20 x 1 1/2 Screw
12		3	1/4-20 Nut	47	101753	4	Grease Fitting
13		1	1/4-20 x 1 1/4 Screw	48	468027	4	Nut
14	468033	4	Bolt	49	467368	1	Sprocket
15	367184	2	Washer	50	469028	1	Differential
16	367095	2	Collar	51	468029	1	Differential Assy (#10/14-22/45-51)
17	469026	1	Brake Drum	52	030080	1	Decal, Hands Clear
18	468031	1	Spacer	53	471140	1	Motor 24V
19		15	1/4-20 x 1/2 Screw	*	386263	1	Brush Set
20	471157	2	Sprocket	54	468166	1	Motor Mount
21	441406	4	Bearing	55	469868	1	Connector
22	468047	1	Left Differential Support	56		4	1/4-20 x 1 Screw
23	402745	1	Brake Strap	57	468179	1	Connector
24	468163	2	Bushing	58	468225	1	Battery Box
25	321427	4	Retaining Ring	59	372730	4	Battery 6V 220 A.H.**
26	104760	1	Pin		376014	4	Battery 6V 244 A.H.**
27		15	1/4 Lock Washer	60	363928	3	Battery Cable
28		11	1/4 Washer	61	372673	8	Battery Post Boot
29	468173	1	Left Battery Stop				
30		2	#10-24 x 3/8 Screw				
31		2	#10 Lock Washer	*	372945	1	Battery Charger (optional)
32	477620	1	Tool Clamp				
33	471362	1	Tool				
34	367192	4	Washer				
35	470581	2	Wheel				

* = Not Shown

** = Not Included



WIRING DIAGRAM AND ELECTRICAL PANEL

Item	Part No.	Qty	Description
1	372730	4	Battery (optional)
2	470750	2	Solenoid (Rev/Low/For)
3	468179	1	Connector
4	469868	1	Connector
5	448733	1	70A Fuse
6	470752	1	Resistor
7	371394	1	Solenoid (High/For)
8	468175	1	Shaker Switch
9	468176	1	Shaker Motor 24V
	468239	1	Brush Set
10	471140	1	Drive Motor 24V
11	467410	1	Indicator Light
12	469530	1	Side Broom Motor 24V
	471129	1	Brush Set
13	469504	1	Broom/Impeller Motor 24V
	342021	1	Brush Set
14	468358	1	Solenoid (Vacuum/Broom)
15	454423	1	30A Circuit Breaker
16	754092	1	Broom Switch
17	385615	3	Snap Switch (Rev/For/High)
18	441538	1	Main Switch
19	171535	1	17A Circuit Breaker
20		8	1/4-20 x 3/8 Screw
21		10	1/4 Lock Washer
22		8	1/4 Washer
23	468184	1	Electrical Panel
24		2	1/4-20 x 7/8 Screw
25	470754	1	Bracket
*	469532	1	Wiring Harness

* = Not Shown



Nilfisk-Advance, Inc.
14600 21st Avenue North
Plymouth, MN, 55447-3408
www.nilfisk-advance.com
Phone: 800-989-2235
Fax: 800-989-6566
©2000 Nilfisk-Advance, Inc.,
Plymouth, MN 55447-3408
Printed in the U.S.A.