



Electronic Service Manuals

This electronic document is provided as a service to our customers. We do not create the contents of the information contained in this document. Should you have detailed questions pertaining to the information contained in this document, you may contact Michco, or the manufacturer which provided the original information in this electronic deliverable. Michco's only part in this electronic deliverable was the electronic assembly process.

You may contact Michco through the following methods:
Phone (517) 484-9312 or (800) 331-3339 MI, OH, IN only
2011 N. High St. -- Lansing, Michigan -- 48906
Fax: (517) 484-9836
Email: CustServ@Michco.com
Web site: www.Michco.Com
Parts Web site: www.FloorMachineParts.Com

Order Parts on Line at:
www.FloorMachineParts.Com

Directly to Parts & Service:
By Email: **Shop@Michco.com**
By Fax: (517) 702-2041
By Voice: Use numbers above.

Serving the Cleaning Industry Since 1922

Notice: All copyrighted material remains property of original owners, all trademarks are property of respective owners. Manuals are subject to Manufacturer's reproduction limitations. Originals or reproductions were provided by manufacturers through a request. We make no warranty as to the correctness of information provided in this document and you assume all risk.

PARTS LIST

PACEMAKER

MODELS 168100
168105
168500
168505

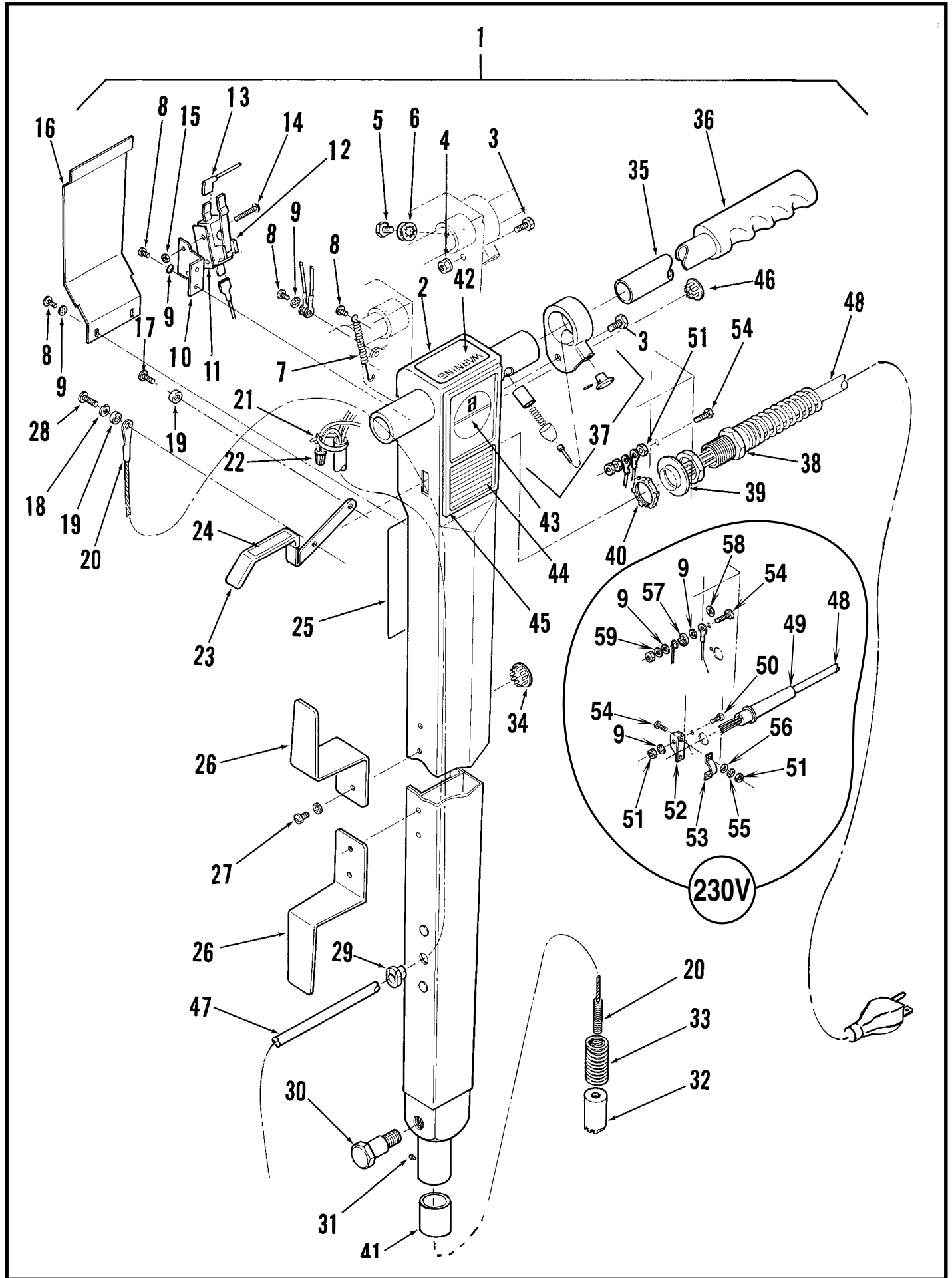
revised 10/96 Form Number 042090

* This parts list is for machines built from March 1983 to June 1991 and replaces revision 3/83. Reference note on inside of back cover.



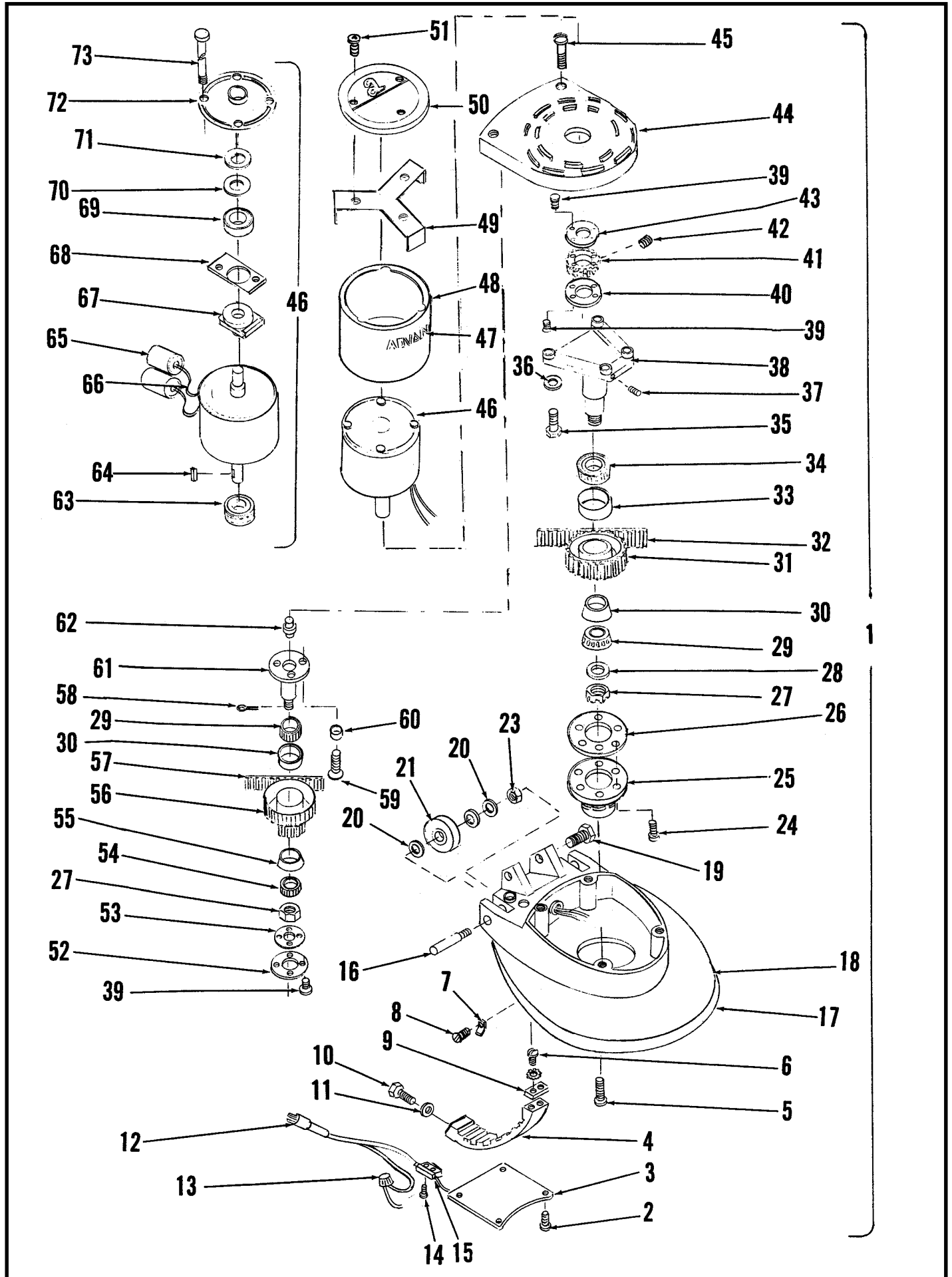
ADVANCE
MACHINE COMPANY





HANDLE ASSEMBLY

Item	Part No.	Qty	Description	Item	Part No.	Qty	Description
1	171275	1	Handle Ass'y., 115V	34	153699	3	Plug Button
	171430	1	Handle Ass'y., 230V	35	172198	1	Tube, Handle TSB494, G-10
2	172258	1	Handle	36	514085	2	Grip,Handle
3		1	Screw, Hex Hd. 1/4-20 x 1/2	37	172219	1	Safety Lock Ass'y.
4		1	Nut, Whiz 1/4-20		172209	1	Collar
5	234079	1	Screw		201405	1	Knob
6		2	Washer, Shakeproof 5/16		201472	1	Pin
7	445177	1	Spring		172266	1	Plunger
8		6	Screw, #8-32 x 1/4 HP-5		201448	1	Spring
9		4	Washer, Shakeproof #8		172201	1	Bushing
10	171209	1	Bracket	38	109630	1	Strain Relief
11	171225	1	Switch, Snap TSB494, G-10	39	171093	1	Washer
12	321338	1	Insulator	40	171094	1	Nut, Hex
13	321311	1	Tab Receptacle	41	171269	1	Bushing
14		2	Screw, Pan Hd. #4-40 x 7/8	42	014924	1	Decal, Warning
15		1	Nut, Hex #4-40	43	014600	1	Decal, Advance
16	172262	1	Cover	44	014853	1	Decal, Insert
17		1	Screw, #10-24 x 3/8 HP-5	45	014598	1	Decal, Plate
18	150150	1	Washer Bowed	46	157244	1	Plug Button
19	151092	2	Spacer	47	171128	1	Cord Set, 115V & 230V
20	171099	1	Cable Ass'y.	48	524069	1	Cord Set, 115V
21	478246	1	Cable Tie		300227	1	Cord Set, 230V
22	321737	1	Wire Nut	49	301396	1	Strain Relief
23	171126	1	Lever	50		1	Screw, #8-32 x 3/8 230V
24	014856	1	Decal, Handle	51		3	Nut, #8-32 (6 used on 230V)
25	014828	1	Decal, Warning	52	171434	1	Bracket 230V
26	172213	2	Hook Cord	53	300542	1	Clamp, Strain Relief 230V
27		4	Screw, #10-32 x 3/8 HP-5	54		3	Screw, Pan Hd. #8-32 x 5/8
28		1	Screw, #10-24 x 1/2 HP-5	55		5	Washer, Shakeproof #8 230V
29	382817	1	Strain Relief	56		2	Washer, Flat 230V
30	171097	2	Bolt, Pivot	57	325274	1	Washer Cupped 230V
31		1	Screw, Drive #4 x 1/4	58	014119	1	Decal, Ground Symbol 230V
32	171132	1	Plunger	59	325276	1	Washer 230V
33	171123	1	Spring				



BASE ASSEMBLY

Item	Part No.	Qty	Description	Item	Part No.	Qty	Description
1			Omitted Intentionally	524804		1	Motor, 17" 115V/230V/50hz OBS
2		4	Screw, Pan Hd. #8-32 x 3/8	524806		1	Motor, 20" 115V/230V/50hz Note #3
3	168665	1	Plate, Cover 17"	47	014532	1	Decal, Advance
	168670	1	Plate, Cover 20"	48	167499	1	Shroud, 17"
4	171104	1	Ratchet		168641	1	Shroud, 20"
5		2	Screw, Rd. Hd. 5/16-18 x 3	49	524430	1	Clamp (Lear Siegler)
6		2	Screw, Pan Hd. 1/4-20 x 1/2		524436	1	Clamp (Doerr)
7	168706	2	Clamp, Bumper	50	167282	1	Cover, Motor
8		2	Screw, Oval Hd. #10-32 x 3/4	51		1	Screw, #8-32 x 1/2 HP-5
9	171105	1	Shim	52	158305	1	Cap
10		2	Screw, Hex Hd. 1/4-20 x 3/4	53	163457	1	Gasket
11		2	Washer, Spring 1/4	54	158216	1	Bearing, Cone
12	171129	1	Cord Set, #14/3	55	158208	1	Cup, Bearing
13	321737	2	Connector Wire	56	157872	1	Idler Gear
14		4	Screw, Pan Hd. #4-40 x 7/8	57	158402	1	Belt, Flex-O-Gear
15	468309	1	Switch Ass'y.	58		2	Cotter Pin 1/16 x 1
16	520845	2	Axle	59		3	Screw, Flat Hd. 1/4-20 x 3/4
17	166458	1	Bumper, 17"	60	155144	3	Washer
	166505	1	Bumper, 20"	61	155128	1	Idler Shaft
18	168124	1	Skirt Housing w/Bumper 17"	62	155136	1	Eccentric, Idler Shaft
	168123	1	Skirt Housing w/Bumper 20"	63	154091	1	Bearing
19	171097	2	Screw, Handle Pivot	64	153135	1	Key
20	155373	2	Washer, Bowed	65	153958	2	Capacitor, 270-300 mfd.
21	161691	2	Wheel		164463	2	Capacitor, 200-260 mfd.
22	155411	2	Washer	66	154905	2	Wire Ass'y.
23		2	Nut, Hex 3/8-16	67	524885	1	Switch, Rotating 50hz. (Lear Siegler)
24	009127	6	Screw, Flat Hd. #10-24 x 5/8 HP-5	524887		1	Switch, Rotating 60hz. (Lear Siegler)
25	163430	1	Drive Cap	524889		1	Switch, Rotating 50hz. (Doerr)
26	158275	1	GasKet	524891		1	Switch, Rotating 60hz. (Doerr)
27	158313	2	Nut, Slotted 5/16	100672		1	Switch, Rotating Note #4
28	163449	1	Washer	68	524893	1	Switch Stationary
29	378267	2	Bearing, Cone	100671		1	Switch Stationary Note #4
30	378259	2	Cup, Bearing	69	372773	1	Bearing
31	163384	1	Gear Pulley	70	163319	1	Washer
32	158364	1	Belt, Flex-O-Gear	71	320153	1	Load Spring
33	158143	1	Cup, Bearing	72	524883	1	End Bell, (Lear Siegler)
34	158151	1	Bearing, Cone		524881	1	End Bell, (Doerr)
35		4	Screw, Hex Hd. 3/8-16 x 1-1/4	73	524871	4	Screw, 17" (Lear Siegler)
36	162957	4	Washer		524877	4	Screw, 17" (Doerr)
37		2	Screw, Socket Set 5/16-18 x 3/8		524879	4	Screw, 20" (Lear Siegler)
38	161489	1	Stud Shaft		524873	4	Screw, 20" (Doerr)
39		12	Screw, Swage #4-40 x 1/4				
40	163414	1	Washer				
41	158089	1	Gear Pulley				
42		1	Screw, Socket Set #10-24 x 3/8				
43	158119	1	Washer				
44	166240	1	Housing, Drive				
45		2	Screw, Fil. Hd. 5/16-18 x 1-1/4				
46	524793	1	Motor, 17" 115V/230V/60hz				
			Note #1				
	524796	1	Motor, 20" 115V/230V/60hz				
			Note #2				

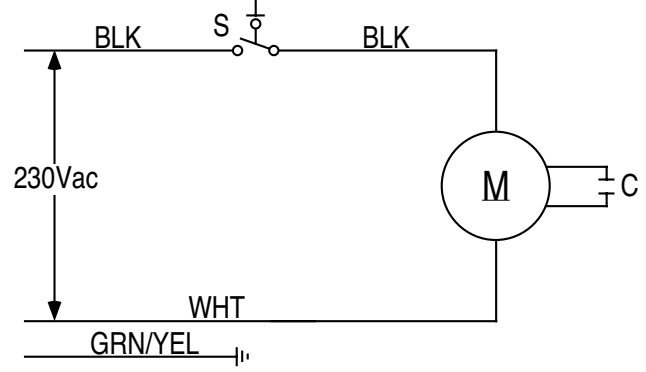
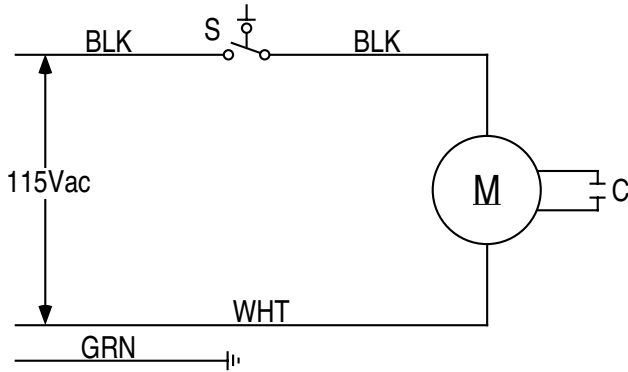
Note #1: This motor is obsolete, order kit #100079 to replace.

Note #2: This motor is obsolete, order kit #100080 to replace.

Note #3: This motor is obsolete, order kit #100081 to replace.

Note #4: This part is for replacement purposes for the motors in kit nos. 100079, 100080, 100081.

Note #5: See **TSB 628, G-8** for information on clutch plate change.



115V WIRING DIAGRAM

230V WIRING DIAGRAM

Item	Part No.	Qty	Description	Item	Part No.	Qty	Description
S	171225	1	Switch, Snap TSB494, G-10	S	171225	1	Switch, Snap TSB494, G-10
M	524793	1	Motor, 17" 115V/60hz Note #1, Page 4	M	524804	1	Motor, 17" 230V/50hz OBS
	524796	1	Motor, 20" 115V/60hz Note #2, Page 4		524806	1	Motor, 20" 230V/50hz Note #3, Page 4
C	153958	2	Capacitor, 270-300 mfd.	C	164463	2	Capacitor, 200-260 mfd.

OPTIONAL BRUSHES

Part No.	Qty	Description	Part No.	Qty	Description
17" BRUSHES			20" BRUSHES		
505055	1	Magna Grit™ 46 Brush, 17"	505058	1	Magna Grit™ 46 Brush, 20"
505054	1	Dyna Grit™ 80 Brush, 17"	505048	1	Dyna Grit™ 80 Brush, 20"
505078	1	MidLite Grit™ 180 Brush, 17"	505079	1	MidLite Grit™ 180 Brush, 20"
505082	1	MidGrit™ 240 Brush, 17"	505083	1	MidGrit™ 240 Brush, 20"
505059	1	AgLite™ 500 Brush, 17"	505063	1	AgLite™ 500 Brush, 20"
505331	1	Prolene Brush, 17"	505450	1	Prolene Brush, 20"
505076	1	ProLite™ Brush, 17"	505077	1	ProLite™ Brush, 20"
505334	1	Union Mix Brush, 17"	505454	1	Union Mix Brush, 20"
505330	1	Short-Trim Pad Holder, 17"	505455	1	Short-Trim Pad Holder, 20"
505180	1	Level-Set Pad Holder, 17"	505183	1	Level-Set Pad Holder, 20"
505530	1	Soft-Touch™ Shampoo Brush, 17"	505531	1	Soft-Touch™ Shampoo Brush, 20"
505537	1	Soft-Touch™ Shampoo Brush Assy, 17"	505538	1	Soft-Touch™ Shampoo Brush Assy, 20"
506001	1	Clutch Plate for Above Brushes (zinc)	506001	1	Clutch Plate for Above Brushes (zinc)
182058	A/R	"Pad Grab" Pad Retainer (snap in)	182058	A/R	"Pad Grab" Pad Retainer (snap in)
393567	A/R	"Big Mouth" Pad Retainer (threaded)	393567	A/R	"Big Mouth" Pad Retainer (threaded)

* **NOTE:** Reference the machine date plate for month and year date code.
Example: "A92" - A = January, B = February, C = March, etc. / 92 = 1992(year built).