



Electronic Service Manuals

This electronic document is provided as a service to our customers. We do not create the contents of the information contained in this document. Should you have detailed questions pertaining to the information contained in this document, you may contact Michco, or the manufacturer which provided the original information in this electronic deliverable. Michco's only part in this electronic deliverable was the electronic assembly process.

You may contact Michco through the following methods:
Phone (517) 484-9312 or (800) 331-3339 MI, OH, IN only
2011 N. High St. -- Lansing, Michigan -- 48906
Fax: (517) 484-9836
Email: CustServ@Michco.com
Web site: www.Michco.Com
Parts Web site: www.FloorMachineParts.Com

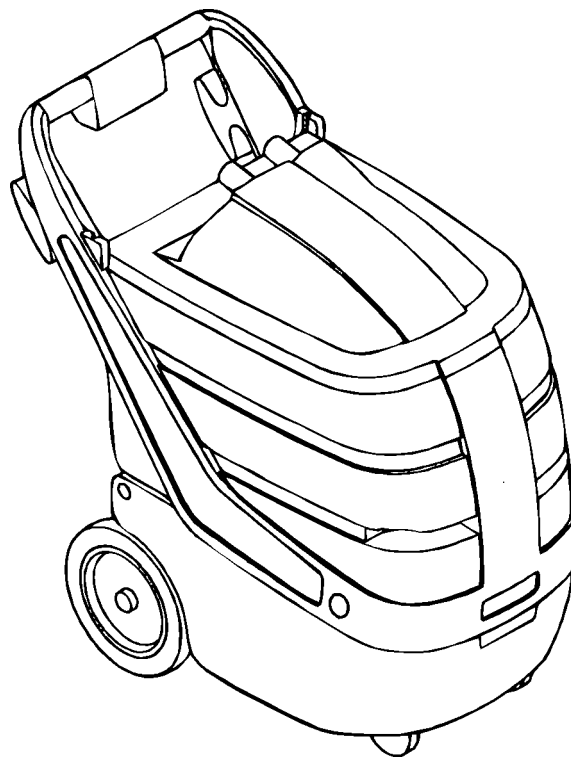
Order Parts on Line at:
www.FloorMachineParts.Com

Directly to Parts & Service:
By Email: **Shop@Michco.com**
By Fax: (517) 702-2041
By Voice: Use numbers above.

Serving the Cleaning Industry Since 1922

Notice: All copyrighted material remains property of original owners, all trademarks are property of respective owners. Manuals are subject to Manufacturer's reproduction limitations. Originals or reproductions were provided by manufacturers through a request. We make no warranty as to the correctness of information provided in this document and you assume all risk.

SelecTrac™ 17T / 17THP



PARTS LIST **Kent MODELS 56648033, 56648035**



**Nilfisk
Advance**

setting standards

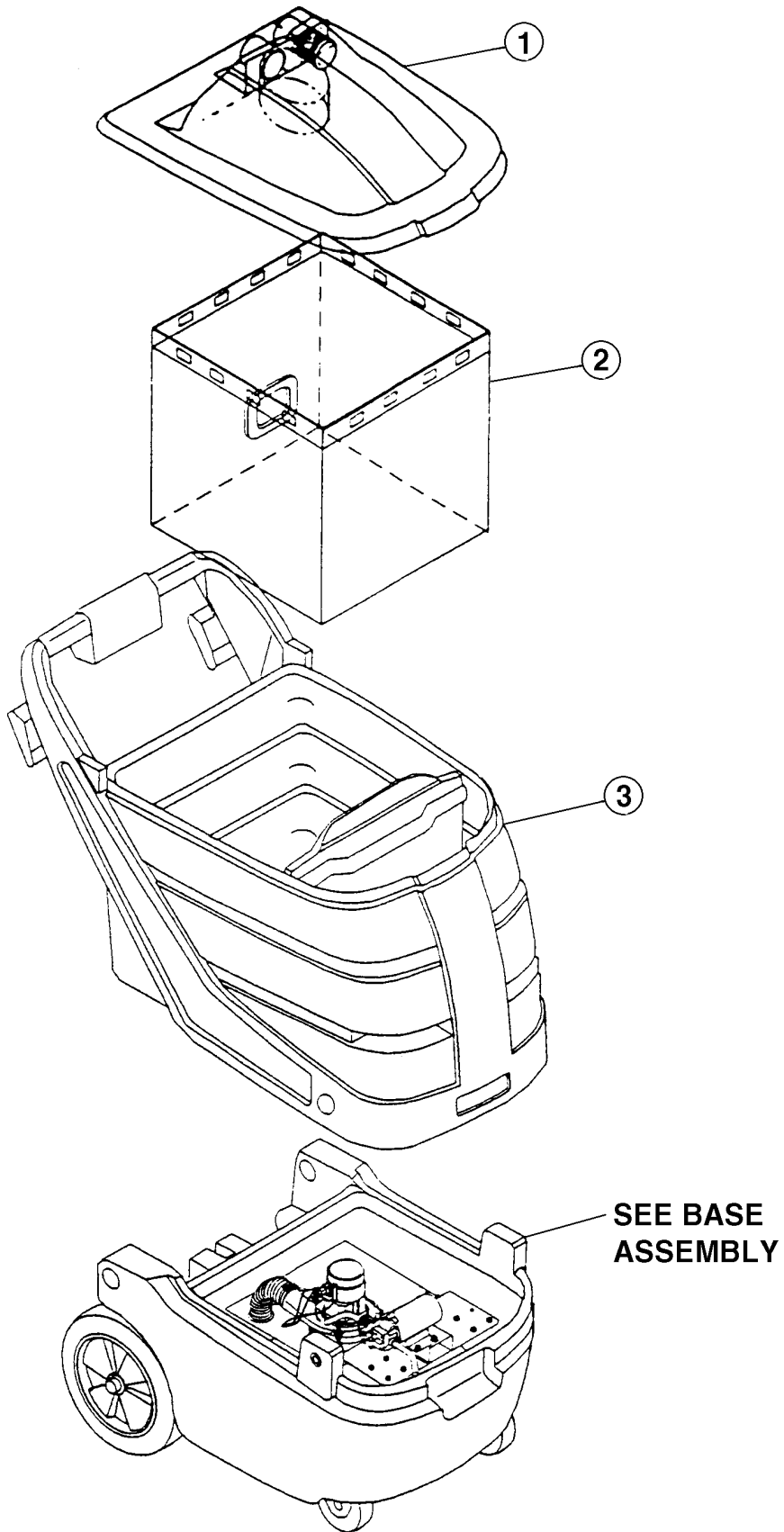
7/00 FORM NO. 56042401(083471P-1)

DESCRIPTION	PAGE
MAJOR ASSEMBLIES	2-3
LID AND BLADDER ASSEMBLY	4-5
TANK ASSEMBLY	6-7
BASE ASSEMBLY-17T	8-9
BASE ASSEMBLY-17THP	10-11

WHEN ORDERING PARTS

- * Use the 8-10 digit numbers from the "Ref. No." columns in this parts list.
- * Specify the model and serial number of the machine.
- * Use the space below to record the model and serial number for future reference.

Model _____ Serial No. _____



ITEM	REF. NO.	QTY	DESCRIPTION
1	1410703010	1	ASM, LID
2	1410704010	1	ASM, BLADDER
3	1410705010	1	ASM, TANK, 17T
	56628905	1	ASM, TANK, 17THP
*	1410707010	1	ASM, HOSE 15FT (100PSI)
*	1410708010	1	ASM, HOSE 25FT (300PSI)
*	1410814010	1	HOSE, PRIMING, 17THP
**	1410700010	1	ASM, HEATER MOUNT KIT, 17T
**	1410701010	1	ASM, HEATER MOUNT KIT, 17THP
**	1410702010	1	BAG, CLOTH
**	56648036	1	HEATER-IN LINE
**	56648042	1	POWERHEAD 12
**	56039632	1	HAND TOOL, 4.25"
**	56039631	1	DRAG TOOL, SS

* = NOT SHOWN

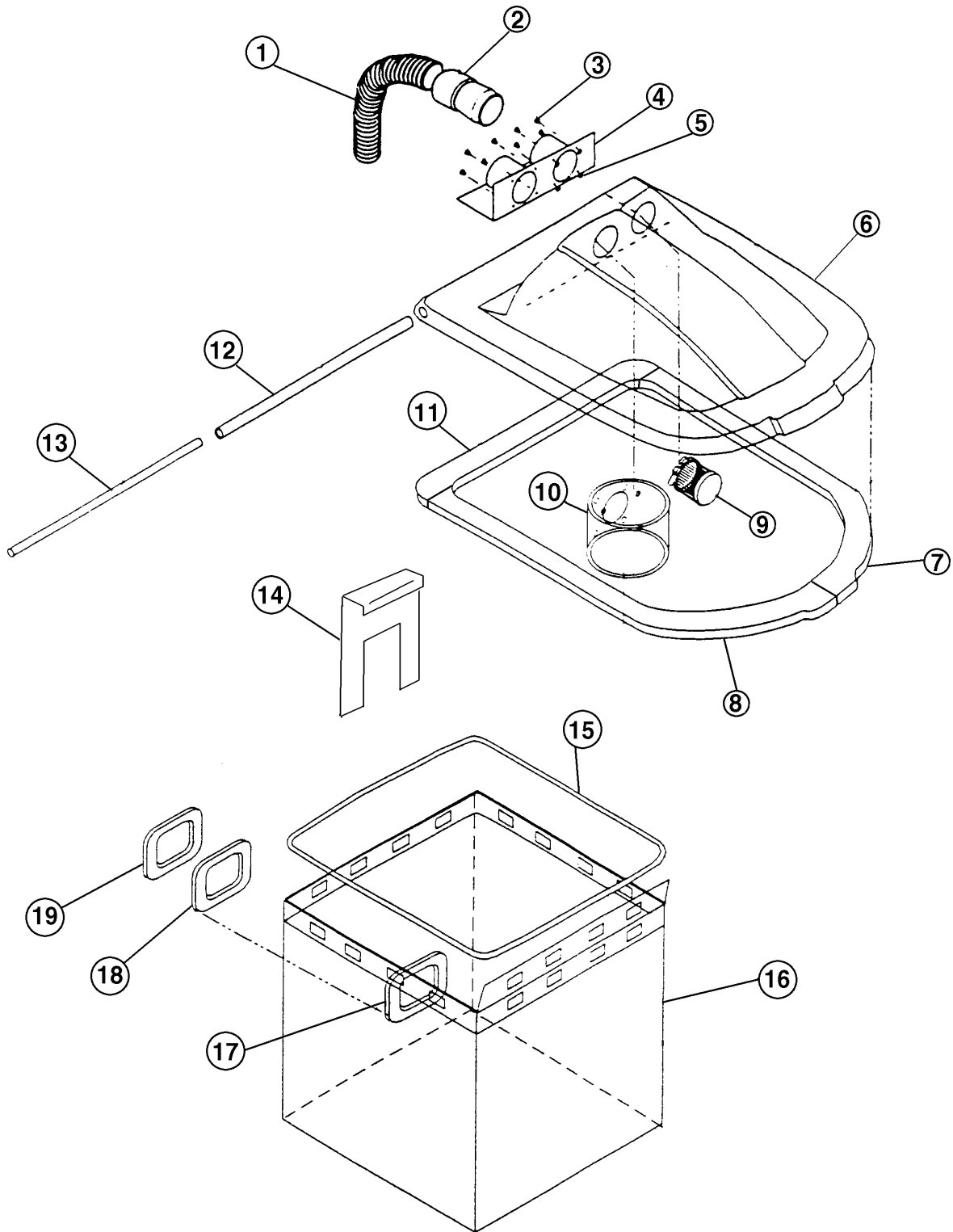
** = OPTIONAL

LID AND BLADDER ASSEMBLY

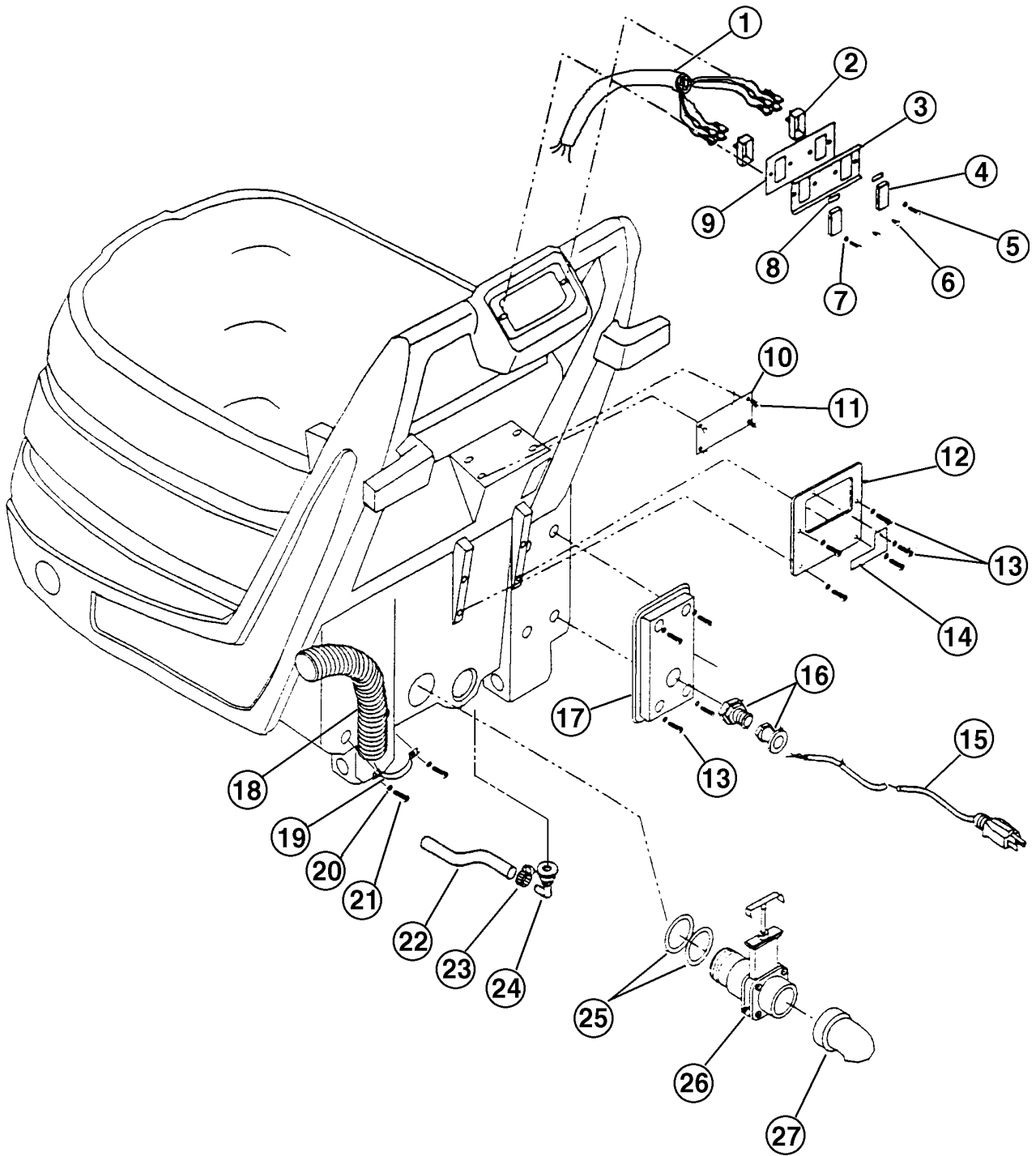
00-7

4

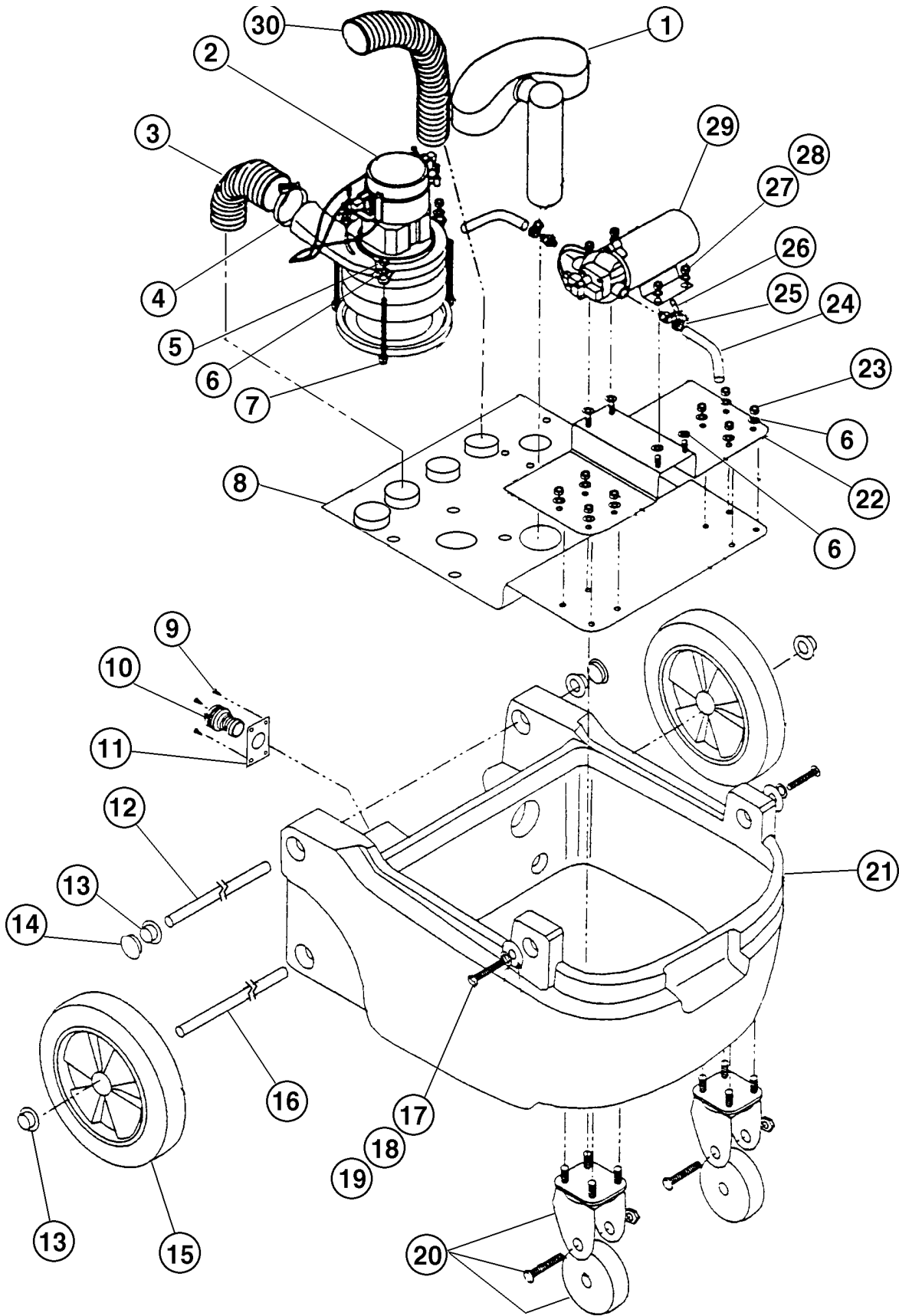
SelecTrac™ 17T / 17THP



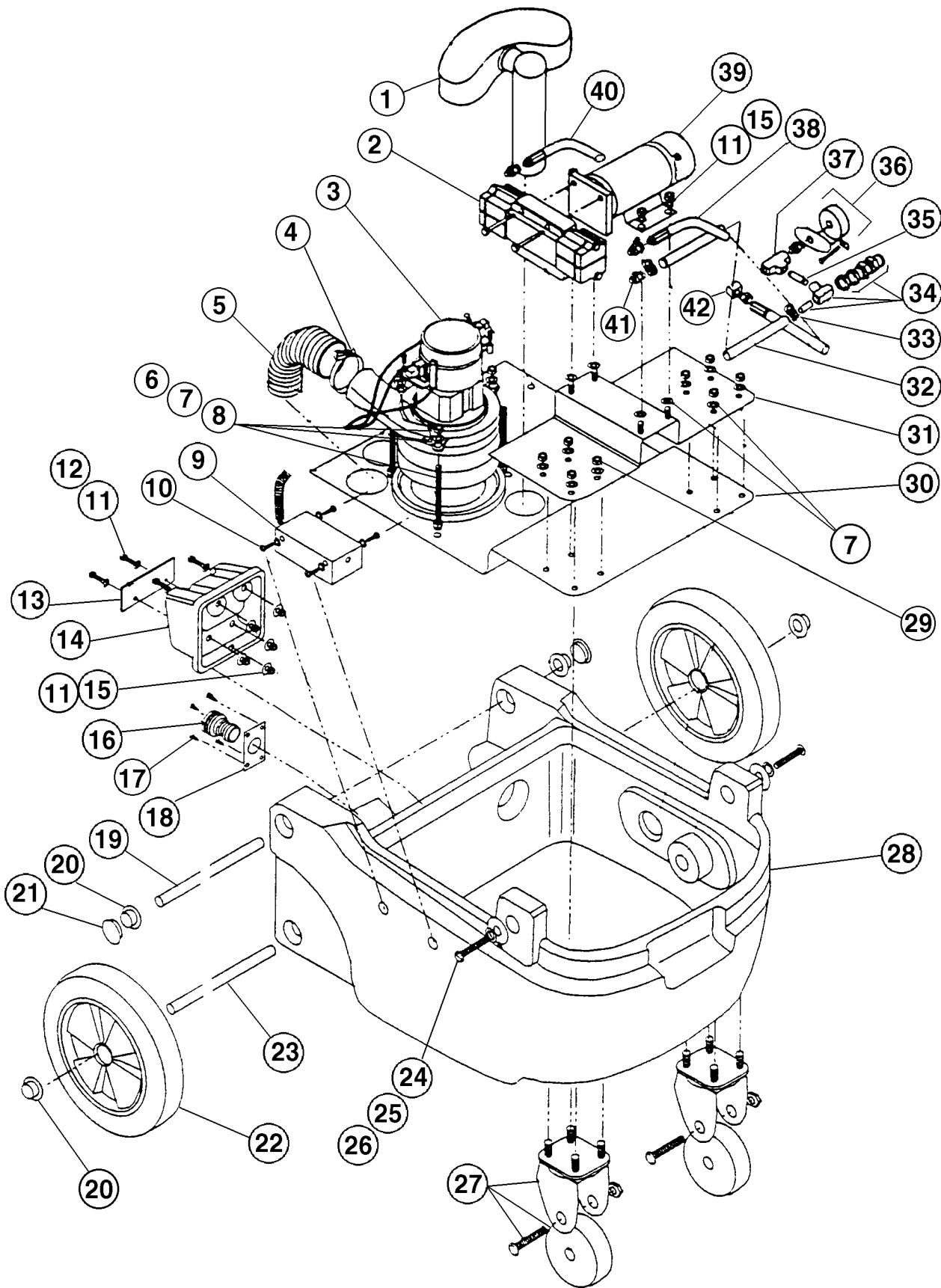
ITEM	REF. NO.	QTY	DESCRIPTION
1	1410709010	3'	HOSE, VACUUM—1.5"
2	1410710010	1	CUFF, HOSE
3	1410711010	4	RIVET—3/16 ALUMINUM
4	1410712010	1	PLATE—LID ADAPTER
5	1410711010	4	RIVET—3/16 ALUMINUM
6	1410713010	1	LID
7	1410714010	1	GASKET, LID—RIGHT SIDE
8	1410715010	1	GASKET, LID—LEFT SIDE
9	1410716010	1	ASM—SCREEN FILTER & CLAMP
10	1410717010	1	DIFFUSER, LID
11	1410718010	1	GASKET, LID—BACK EDGE
12	1410719010	1	HINGE, LID
13	1410720010	1	SHAFT—LID PIVOT
14	1410729010	1	FORK, BLADDER
15	1410721010	1	RING—BLADDER
16	1410704010	1	ASM, BLADDER
17	1410723010	1	RING, INNER—BLADDER
18	1410724010	1	GASKET, BLADDER
19	1410725010	1	RING, OUTER—BLADDER



ITEM	REF. NO.	QTY	DESCRIPTION
1	1410747010	1	HARNESS, SWITCH—KX-17T
1	1410748010	1	HARNESS, SWITCH—KX-17THP
2	1410749010	2	SWITCH, ROCKER—115/230, 20A
3	56628909	1	BRACKET, SW COVER HOLD DOWN
4	1410751010	2	COVER, ROCKER SWITCH
5	56628910	2	SCREW, MACH—8-32 X 3/4L, SS
6	56628911	2	SCREW, SHT METAL—#8 X 1/2L
7	56628912	2	WASHER, STAR—#8
8	56628913	2	LABEL, INSTR—SWITCH
9	1410756010	1	GASKET, SWITCH BRACKET
10	56628914	1	PLATE, SERIAL NO. MOUNTING
11	56628915	4	RIVET, #44
12	56628916	1	PLATE, HEATER MTG—UPPER
13	56628917	6	SCREW, MACH—8/32 X 3/8L
14	56628918	1	LATCH, HEATER MTG
15	1410762010	1	CORD, INPUT—14/3 SJTW, 25 FT
16	1410763010	1	RELIEF, STRAIN
17	56628919	1	COVER, ELECTRICAL BOX
18	1410709010	3'	HOSE, VACUUM—1.5"
19	1410764010	1	CLAMP, HOSE—1-1/4"
20	56628907	4	BOLT, HEX—1/4-20 X 3/4L
21	1410744010	6	BOLT, HEX—1/4-20 X 5/8L
22	1410745010	1	HOSE—3/8" X 5 FT
23	56628933	2	CLAMP, HOSE—5/8"
24	56628908	1	ELBOW, 90 DEG—3/8 MF X 3/8
25	1410765010	2	GASKET—2" OD X 1/8" T
26	1410766010	1	VALVE, DRAIN—1-1/2 S X S
27	1410767010	1	ELBOW, DRAIN VALVE



ITEM	REF. NO.	QTY	DESCRIPTION
1	1410769010	1	MANIFOLD, VAC MOTOR
2	1410770010	1	MTR, VAC—115V,3 STAGE,BP
	56628920	1	MTR,VAC—230V,3 STAGE,BP
3	56628921	1'	HOSE, VACUUM—2"
4	56628922	2	CLAMP, HOSE—2", NYLON
5	56628923	8	NUT, HEX-1/4"
6	56628924	14	WASHER, LOCK—5/16
7	56628925	3	BOLT, HEX—1/4-20 X 5L
8	56628928	1	PLATE, CHASSIS
9	56628917	8	SCREW, MACHINE—8-32 X 3/8L
10	1410790010	1	QUICK DISCONNECT
11	56628932	1	PLATE, MTG—QUICK DISCONNECT
12	56628931	1	SHAFT, PIVOT—MOTOR HOUSING
13	1410777010	4	NUT, PUSH—1/2" CAP
14	1410787010	2	PLUG, HOLE—1"
15	1410781010	2	WHEEL, 10"
16	1410786010	1	AXLE, WHEEL—1/2"
17	56628906	12	WASHER—9/32 X 1-1/4
18	56628930	20	WASHER, FLAT—1/4"
19	1410744010	6	BOLT, HEX—1/4-20 X 5/8L
20	1410783010	2	CASTER, 4" PLATE
21	56628929	1	HOUSING, MOTOR
22	56628927	1	PLATE, PUMP
23	56628926	8	NUT, HEX—5/16
24	1410745010	1	HOSE—3/8" X 5 FT
25	56628933	2	CLAMP, HOSE—5/8"
26	56628934	2	FITTING—3/8 BARB X 3/8 ML PIPE
27	56628930	20	WASHER, FLAT—1/4"
28	56628923	8	NUT, HEX—1/4"
29	1410796010	1	PUMP, 100PSI—115V
29	1410797010	1	PUMP, 100PSI—230V
30	1410709010	3'	HOSE, VACUUM 1-1/2"



ITEM	REF. NO.	QTY	DESCRIPTION
1	1410769010	1	MANIFOLD, VAC MOTOR
2	1410809010	1	PUMP—200 PSI,115V
2	56628937	1	PUMP—200 PSI,230V
3	1410770010	1	MTR, VAC—115V,3 STAGE,BP
3	56628920	1	MTR,VAC—230V,3 STAGE,BP
4	56628922	2	CLAMP, HOSE—2", NYLON
5	56628921	1'	HOSE, VACUUM—2"
6	56628923	8	NUT, HEX-1/4"
7	56628924	14	WASHER, LOCK—5/16
8	56628925	3	BOLT, HEX—1/4-20 X 5L
9	1410811010	1	BOX—PUMP REGULATOR
10	1410812010	6	SCREW, MACH—10-32 X 5/8L
11	56628930	20	WASHER, FLAT—1/4"
12	56628907	4	BOLT, HEX—1/4-20 X 3/4L
13	56628938	1	PLATE, HEATER MTG—LOWER
14	56628939	1	FLANGE, MOUNTING
15	56628923	8	NUT, HEX—1/4"
16	1410790010	1	QUICK DISCONNECT
17	56628917	8	SCREW, MACHINE—8-32 X 3/8L
18	56628932	1	PLATE, MTG—QUICK DISCONNECT
19	56628931	1	SHAFT, PIVOT—MOTOR HOUSING
20	1410777010	4	NUT, PUSH—1/2" CAP
21	1410787010	2	PLUG, HOLE—1"
22	1410781010	2	WHEEL, 10"
23	1410786010	1	AXLE, WHEEL—1/2"
24	56628906	12	WASHER—9/32 X 1-1/4
25	56628930	20	WASHER, FLAT—1/4"
26	1410744010	6	BOLT, HEX—1/4-20 X 5/8L
27	1410783010	2	CASTER, 4" PLATE
28	1410799010	1	HOUSING, MOTOR
29	56628926	8	NUT, HEX—5/16
30	56628928	1	PLATE, CHASSIS
31	56628935	1	PLATE, PUMP
32	1410745010	1	HOSE—3/8" X 5 FT
33	56628933	2	CLAMP, HOSE—5/8"
34	56628936	1	REGULATOR, PRESSURE
35	1410805010	1	NIPPLE, BRASS—2"
36	1410804010	1	GAUGE, PRESSURE
37	1410803010	1	FITTING—3/8 BARB X 1/4 MALE PIPE
38	1410802010	1	HOSE, PULSE
39	1410800010	1	MTR, PUMP—115V
40	1410801010	1	HOSE, PULSE
41	1410808010	1	TEE, FEMALE
42	1410807010	1	ELBOW, 90 DEG—1/4", BRASS



Nilfisk-Advance, Inc.
14600 21st Avenue North
Plymouth, MN, 55447-3408
www.nilfisk-advance.com
Phone: 800-989-2235
Fax: 800-989-6566
©2000 Nilfisk-Advance, Inc.,
Plymouth, MN 55447-3408
Printed in the U.S.A.