



# Electronic Service Manuals

This electronic document is provided as a service to our customers. We do not create the contents of the information contained in this document. Should you have detailed questions pertaining to the information contained in this document, you may contact Michco, or the manufacturer which provided the original information in this electronic deliverable. Michco's only part in this electronic deliverable was the electronic assembly process.

You may contact Michco through the following methods:  
Phone (517) 484-9312 or (800) 331-3339 MI, OH, IN only  
2011 N. High St. -- Lansing, Michigan -- 48906  
Fax: (517) 484-9836  
Email: [CustServ@Michco.com](mailto:CustServ@Michco.com)  
Web site: [www.Michco.Com](http://www.Michco.Com)  
Parts Web site: [www.FloorMachineParts.Com](http://www.FloorMachineParts.Com)

Order Parts on Line at:  
**[www.FloorMachineParts.Com](http://www.FloorMachineParts.Com)**

Directly to Parts & Service:  
By Email: **[Shop@Michco.com](mailto:Shop@Michco.com)**  
By Fax: (517) 702-2041  
By Voice: Use numbers above.

**Serving the Cleaning Industry Since 1922**

Notice: All copyrighted material remains property of original owners, all trademarks are property of respective owners. Manuals are subject to Manufacturer's reproduction limitations. Originals or reproductions were provided by manufacturers through a request. We make no warranty as to the correctness of information provided in this document and you assume all risk.

# Whirlamatic™ Twin 2000

---



## **PARTS LIST** **Advance MODEL 56389100(OBSOLETE)**



**Nilfisk**  
**Advance**  
*setting standards*

5/90revised 3/01 FORM NO. 56042222

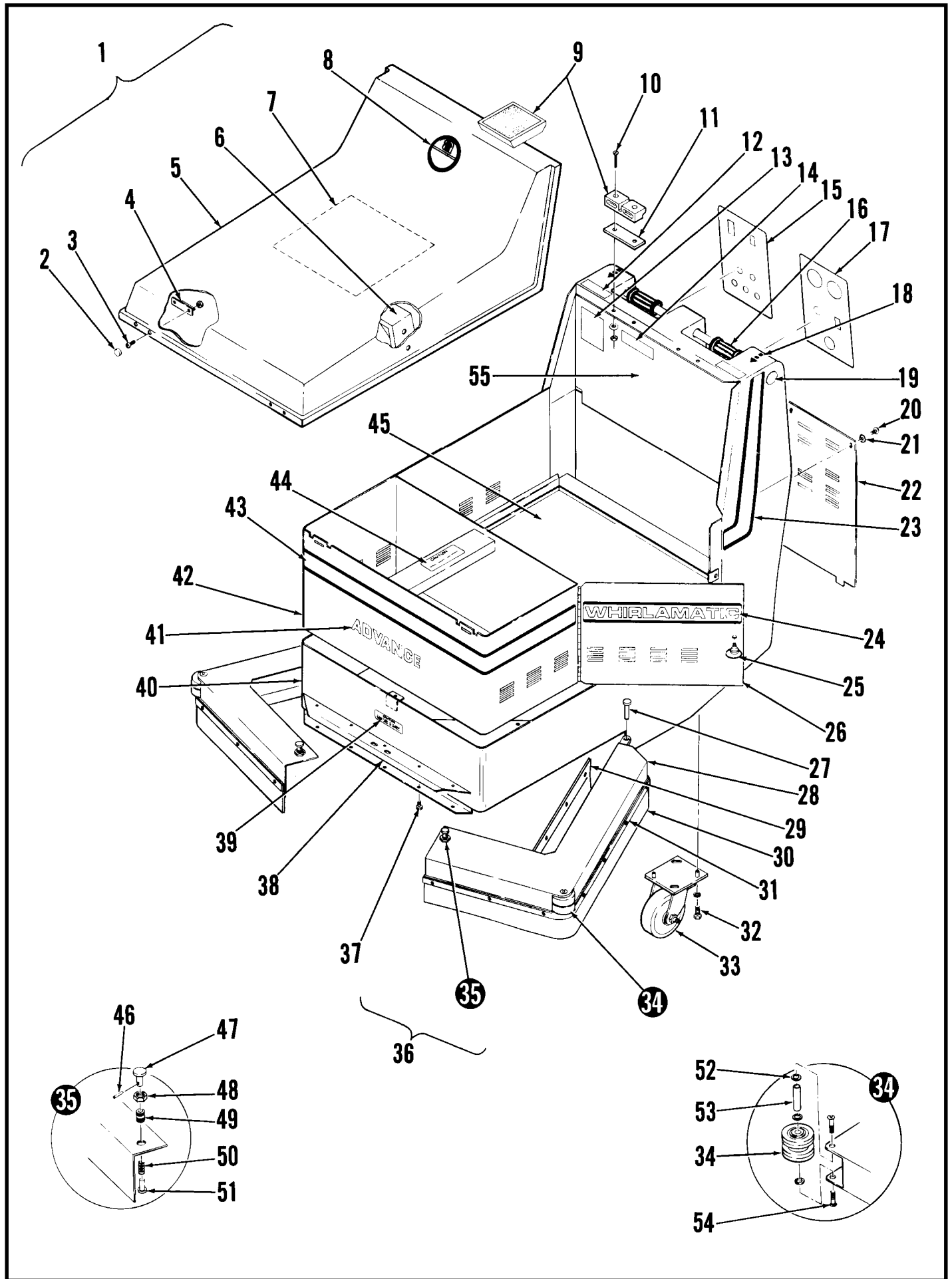
# TABLE OF CONTENTS

<b>DESCRIPTION</b>	<b>PAGE</b>
Housing Assembly .....	1-2
Brush Drive .....	3-4
Drive Wheel .....	5-6
Speed Controls .....	7-8
Wiring diagram .....	9

## WHEN ORDERING PARTS

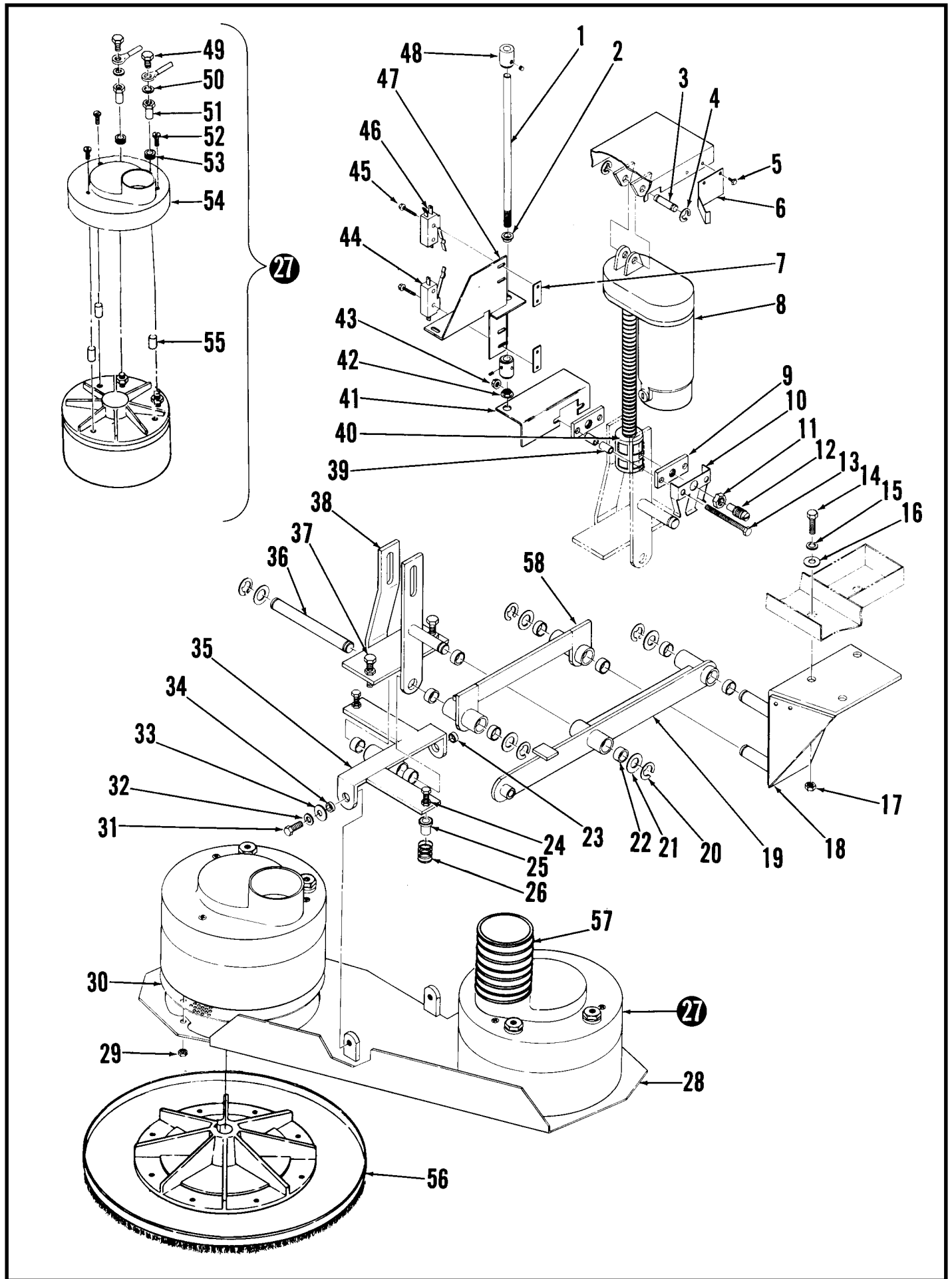
- \* Use the 8 digit numbers from the "Part No." columns in this parts list.
- \* Specify the model and serial number of the machine.
- \* Use the space below to record the model and serial number for future reference.

Model \_\_\_\_\_ Serial No. \_\_\_\_\_



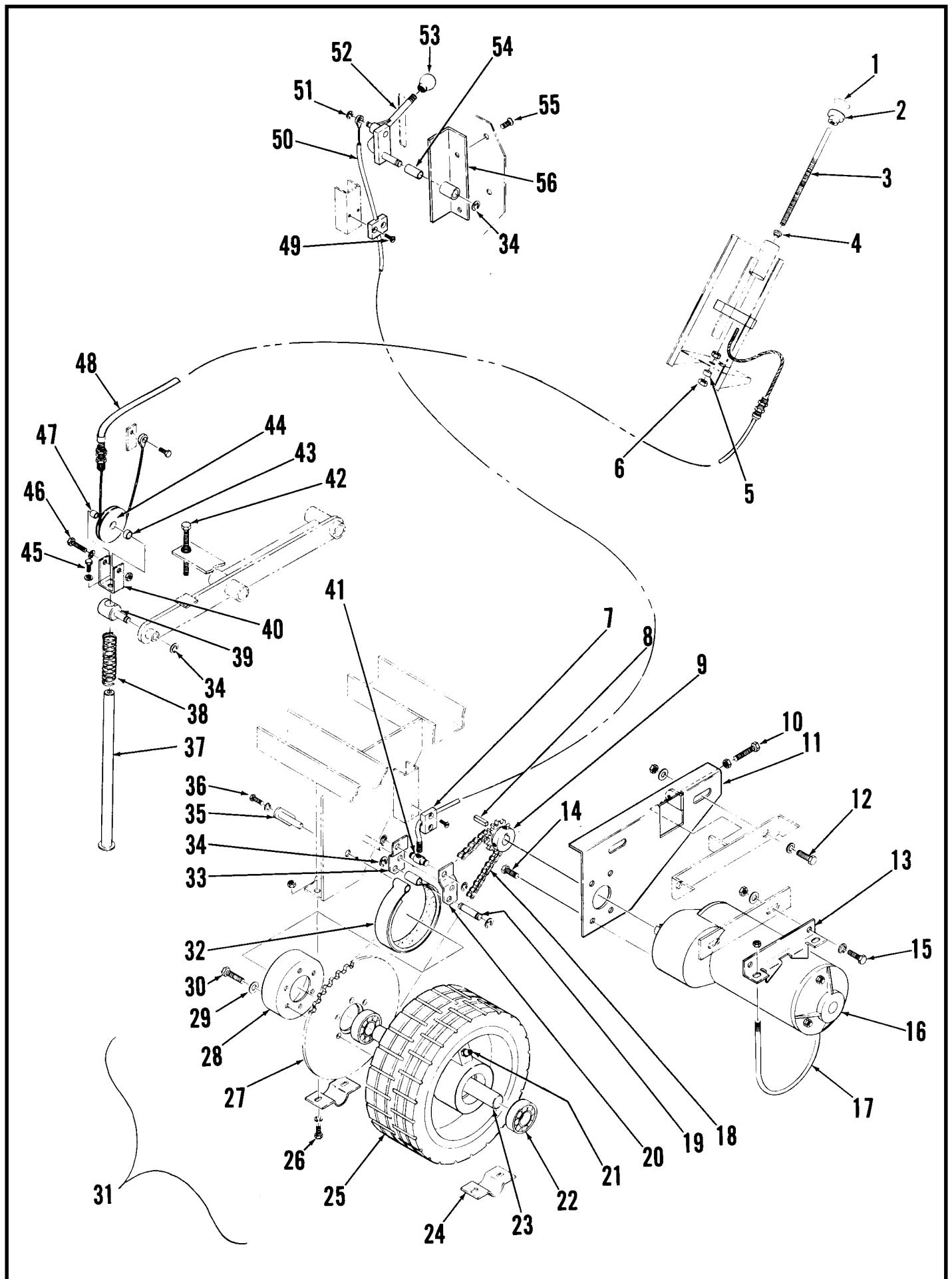
# HOUSING

Item	Part No.	Qty	Description	Item	Part No.	Qty	Description
1	56389140	1	Shroud Assy (#2-9)	38	56389139	1	Bracket
2	56387190	4	Snap Cap	39	56016106	1	Decal, Caution
3		4	#10-24 x 3/8 Screw	40	56389144	1	Chassis
4	56389084	2	Bracket	41	56014105	1	Decal, Advance
5	56389149	1	Shroud	42	56389128	1	Battery Housing
6	56388550	1	Channel	43	56014138	1	Decal, Stripe
7	56025280	1	Decal, Electrical	44	56016116	1	Decal, Caution
8	56014143	1	Decal, Logo	45	56389110	1	Battery Tray
9	56389454	1	Draw Latch	46	56201472	1	Pin
10		4	#6-32 x 3/4 Screw	47	56201405	1	Knob
11	56388548	2	Spacer	48	56201413	1	Nut
12	56025294	1	Decal, Warning	49	56201383	1	Socket
13	56016958	1	Decal, Cable Routing	50	56201448	1	Spring
14	56025363	1	Decal, Caution	51	56201391	1	Pin
15	56025283	1	Decal, Control Panel	52	56371009	4	Washer
16	56388543	2	Handle Grip	53	56386823	1	Bushing
17	56025284	1	Decal, Control Panel	54		2	1/4-20 x 1/2 Screw
18	56025286	2	Decal, Arrow	55	56389130	1	Shield
19	56388608	2	Button Plug	56	56389232	4	Battery Cable #4 x 8"
20		6	#10-24 x 3/8 Screw	*	56389238	1	Battery Cable #4 x 25"
21	56449340	6	Washer	*	56389241	1	Battery Cable #4 x 42"
22	56389148	1	Back Panel	*	56389244	1	Battery Cable #4 x 46"
23	56014137	1	Decal, Left Stripe	* = Not Shown			
*	56014139	1	Decal, Right Stripe				
24	56014140	2	Decal, Whirlamatic				
25	56448104	1	Screw Fastener				
26	56389146	1	Door				
27	56360147	2	Pin				
28	56389136	1	Left Guard				
	56389134	1	Right Guard				
29	56389145	1	Plate				
30	56389143	1	Skirt				
31	56389141	1	Strap				
32		8	1/4-20 x 3/4 Screw				
33	56440450	2	Caster				
34	56363855	4	Bumper Wheel				
35	56365548	1	Lock Pin Assy (#46-51)				
36	56389138	1	Left Guard Assy (#28-31, 34, 35)				
	56389132	1	Right Guard Assy (#28-31, 34, 35)				
37		5	1/4-20 x 1/2 Screw				



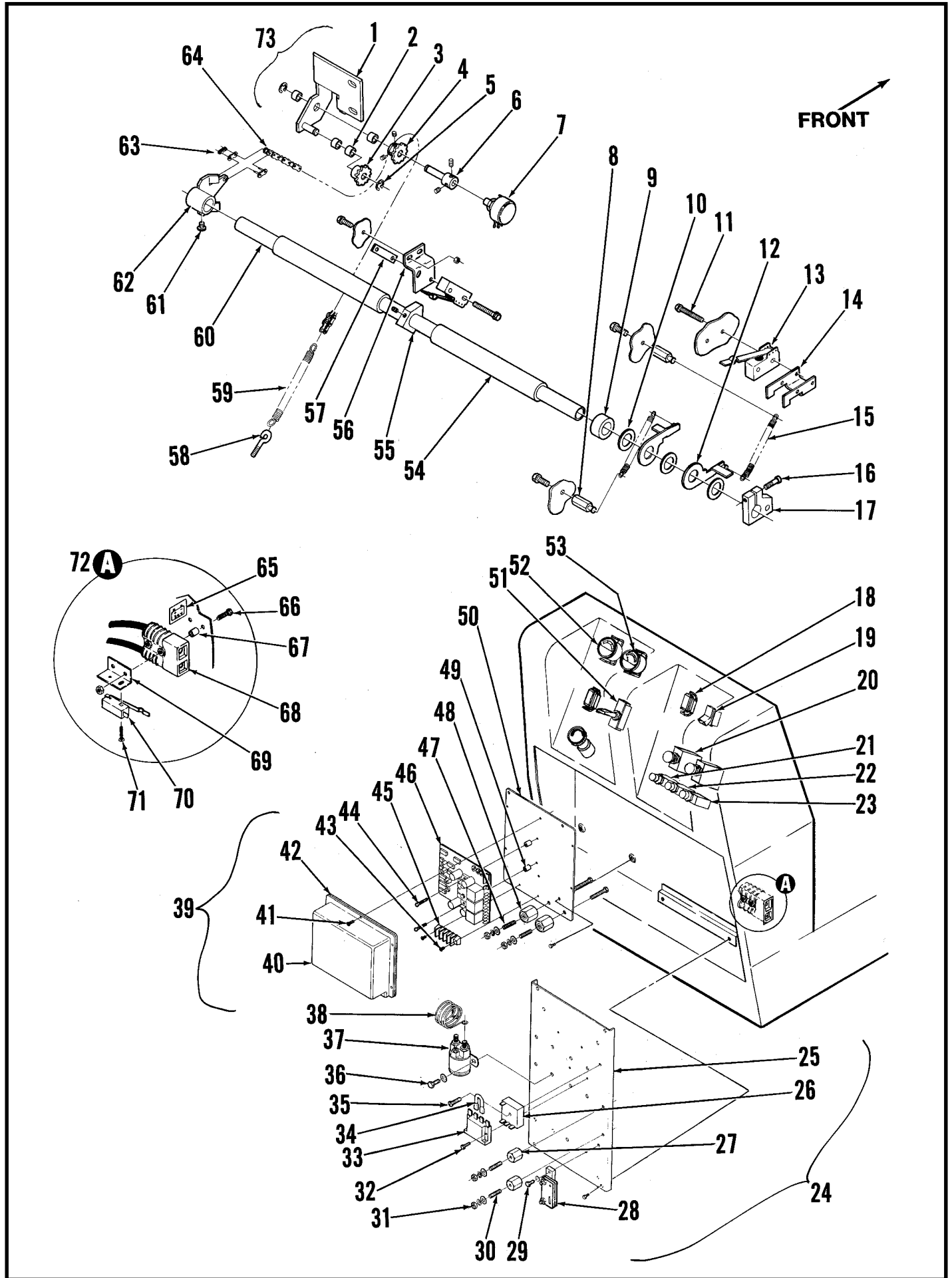
## BRUSH DRIVE

Item	Part No.	Qty	Description	Item	Part No.	Qty	Description
1	56388038	1	Rod	38	56388782	1	Bracket
2	56329098	1	Bushing	39	56471220	4	Bushing
3	56388672	1	Pin	40	56388520	1	Nut
4	56321427	2	Retaining Ring	41	56388040	1	Bracket
5		2	#10-24 x 1/2 Screw	42		1	3/8-16 Nut
6	56389330	1	Spring	43		2	1/4-20 Nut
7	56376015	2	Nut Plate	44	56388019	1	Switch
8	56388518	1	Lift Motor <b>TSB 540</b>	45		4	#6-32 x 1 Screw
*	56388517	1	Carbon Brush Kit (for 56388518)	46	56388532	1	Switch
*	56470431	1	Carbon Brush Kit (for 56391627)	47	56388034	1	Bracket
9	56388815	2	Nut Plate	48	56388036	2	Collar
10	56389332	1	Spring	49		2	5/16-24 x 1/2 Bolt
11		2	1/2-13 Nut	50		2	Flat Washer
12	56388827	2	Adjustment Screw	51	56386988	2	Stand-Off
13		2	1/4-20 x 2 Screw	52		3	#10-24 x 1 1/2 Screw
14		3	3/8-16 x 1-1/2 Screw	53	56760212	2	Grommet
15		3	3/8 Lock Washer	54	56389142	1	Cover
16		3	3/8 Flat Washer	55	56471220	3	Bushing
17		3	3/8-16 Nut	56	56505554	2	Union Mix Brush
18	56388800	1	Bracket	*	56388775	1	Pad Holder ( <b>optional kit</b> )
19	56388761	1	Arm	57	56389322	2	Hose
20	56478775	5	Retaining Ring	58	56388770	1	Lever
21	56444839	5	Washer				
22	56370878	10	Bearing				* = Not Shown
23	56228052	1	Bushing				
24		2	5/16-18 x 2 Bolt				
25	56388833	2	Spring Guide				
26	56171123	2	Spring				
27	56388011	1	Motor 36V CCW <b>TSB 356, TSB 578</b>				
	56388010	1	Motor 36V CW <b>TSB 310, TSB 356, TSB 578</b>				
*	56388042	1	Carbon Brush (set of 4)				
*	56388044	1	Carbon Brushes & Springs				
28	56388740	1	Base				
29		6	1/4-20 Nut				
30	56377247	2	Screen				
31		2	5/16-18 x 1 Bolt				
32		2	5/16 Lock Washer				
33		2	Flat Washer				
34	56320595	1	Bushing				
35	56388752	1	Bracket				
36	56388830	1	Pin				
37		2	3/8-16 x 1-1/2 Bolt				



## DRIVE WHEEL

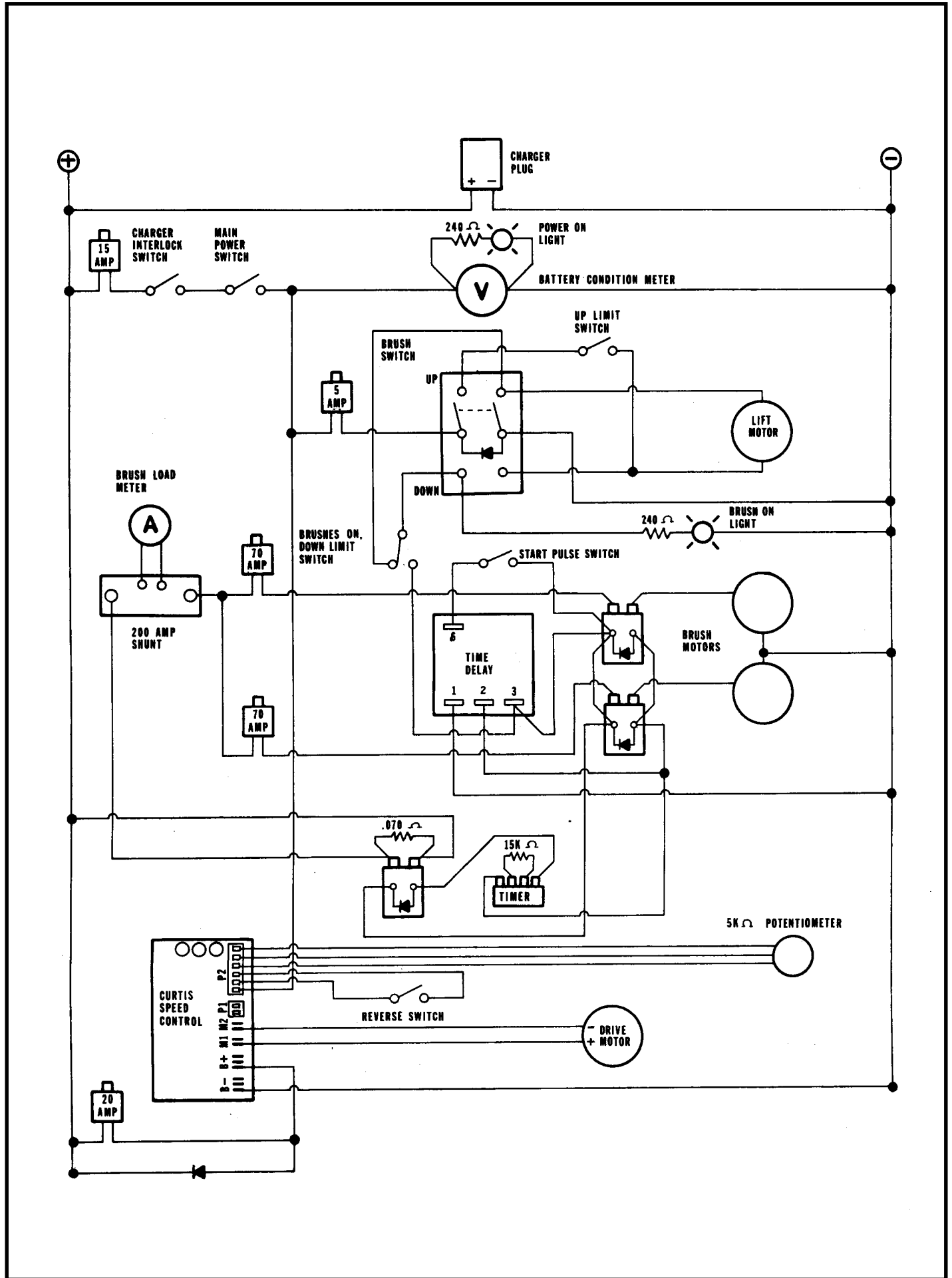
Item	Part No.	Qty	Description	Item	Part No.	Qty	Description
1	56025254	1	Decal, Pad Pressure	32	56402745	1	Brake Band
2	56475480	1	Knob	33	56388678	1	Right Brake Lever
3	56388824	1	Adjusting Rod	34	56321427	6	Retaining Ring
4	56324505	1	Bearing	35	56388666	1	Pin Bracket
5	56366013	1	Bushing	36		2	5/16-18 x 1/2 Bolt
6		2	3/8-24 Nut	37	56388842	1	Pin
7	56477884	2	Cable Clamp	38	56372129	1	Spring
8	56158135	1	Key	39	56386663	1	Pin
9	56471148	1	Sprocket	40	56388839	1	Bracket
10		1	5/16-18 x 2 Bolt	41	56388674	1	Pin
11	56388692	1	Bracket	42		1	3/8-16 x 2 Bolt
12		2	1/2-13 x 1 Bolt	43	56370754	1	Bearing
13	56388682	1	Bracket	44	56388836	1	Pulley
14		4	3/8-16 x 3/4 Bolt	45		1	1/4-20 x 1/2 Screw
15		2	5/16-18 x 3/4 Bolt	46		1	1/4-20 x 1-1/2 Screw
16	56388585	1	Motor 36V 3/4 HP	47	56207489	1	Bushing
*	56388586	1	Carbon Brush Set for 56388585	48	56388852	1	Cable
17	56388686	1	Clamp	49		4	1/4-20 x 7/8 Screw
18	56388583	1	Chain	50	56453845	1	Cable
19	56388672	1	Pin	51	56321125	1	Retaining Ring
20	56388676	1	Left Brake Lever	52	56388650	1	Brake Lever
21	56344362	1	Grease Fitting	53	56364527	1	Knob
22	56378380	2	Ball Bearing	54	56200972	1	Bearing
23	56388698	1	Axle	55		2	1/4-20 x 1/2 Screw
24	56388937	2	Clamp	56	56388660	1	Bracket
25	56376032	1	Wheel				
26		4	1/4-20 x 1 Screw				* = Not Shown
27	56388700	1	Sprocket				
28	56388702	1	Brake Drum				
29		6	5/16 Flat Washer				
30		6	5/16-18 x 1-1/4 Bolt				
31	56376030	1	Wheel Assy (#21-23,25,27-30)				



## HANDLE AND SPEED CONTROLS

Item	Part No.	Qty	Description	Item	Part No.	Qty	Description
1	56377787	1	Bracket	38	56389552	1	Resistor
2	56372624	4	Bearing	39	56377701	1	Speed Control Assy (#40-50)
3	56377796	1	Sprocket	40	56377502	1	Cover
4	56377797	1	Sprocket	41		6	#8-32 x 1/2 Screw
5	56321125	2	Retaining Ring	42	56385448	3'	Gasket (92 mm)
6	56377791	1	Pin	43		2	#6-32 x 3/8 Screw
7	56454740	1	Potentiometer	44		2	#8-32 x 7/8 Screw
8	56377436	2	Pin	45	56328062	1	Terminal Block
9	56377434	1	Collar	46	56377331	1	Speed Control
10	56151858	3	Bearing	47	56150274	2	Stud
11		4	#6-32 x 1 Screw	48	56469858	2	Insulated Stand Off
12	56388562	2	Lever	49	56377721	2	Spacer
13	56388019	2	Switch	50	56377504	1	Heat Sink
14	56388576	1	Bracket	51	56207071	1	Switch
15	56365769	2	Spring	52	56448677	1	Battery Meter
16		1	#10-24 x 1 Screw	53	56391132	1	Ammeter
17	56377438	1	Clamp	54	56388580	2	Tube
18	56467410	2	Indicator Light	55	56388620	1	Collar
19	56377003	1	Switch	56	56388622	1	Bracket
20	56454429	2	Circuit Breaker 70A	57	56376015	1	Nut Plate
21	56387328	1	Circuit Breaker 5A	58	56388599	1	Eye Bolt
22	56395454	1	Circuit Breaker 20A	59	56358560	1	Spring
23	56454538	1	Circuit Breaker 15A	60	56388578	1	Tube
24	56389280	1	Solenoid Panel Assy (#25-38)	61		2	#10-24 x 1/2 Screw
25	56389295	1	Panel	62	56377765	1	Lever
26	56389315	1	Time Delay	63	56377801	1	Connector Link
27	56469858	2	Insulated Stand Off	64	56377793	1	Chain
28	56388505	1	Shunt	65	56016324	1	Decal, 36V
29		2	#10-24 x 5/8 Screw	66		2	1/4-20 x 2-1/2 Screw
30	56454376	2	Stud	67	56109037	2	Bushing
31		2	1/4-20 Nut	68	56371408	1	Charger Plug
32		2	#6-32 x 1/2 Screw	69	56389270	1	Bracket
33	56389550	1	Timer	70	56376435	1	Switch
34	56389546	1	Resistor	71		2	#6-32 x 1 Screw
35		1	#10-24 x 1 Screw	72	56389268	1	Charger Plug Assy (#68-71)
36		6	1/4-20 x 3/8 Screw	73	56377786	1	Potentiometer Assy (#1-7)
37	56395450	3	Contacto	*	56389265	1	Rectifier Assy

\* = Not Shown





Nilfisk-Advance, Inc.  
14600 21st Avenue North  
Plymouth, MN, 55447-3408  
[www.nilfisk-advance.com](http://www.nilfisk-advance.com)  
Phone: 800-989-2235  
Fax: 800-989-6566  
©2001 Nilfisk-Advance, Inc.,  
Plymouth, MN 55447-3408  
Printed in the U.S.A.