



## Electronic Service Manuals

This electronic document is provided as a service to our customers. We do not create the contents of the information contained in this document. Should you have detailed questions pertaining to the information contained in this document, you may contact Michco, or the manufacturer which provided the original information in this electronic deliverable. Michco's only part in this electronic deliverable was the electronic assembly process.

You may contact Michco through the following methods:  
Phone (517) 484-9312 or (800) 331-3339 MI, OH, IN only  
2011 N. High St. -- Lansing, Michigan -- 48906  
Fax: (517) 484-9836  
Email: [CustServ@Michco.com](mailto:CustServ@Michco.com)  
Web site: [www.Michco.Com](http://www.Michco.Com)  
Parts Web site: [www.FloorMachineParts.Com](http://www.FloorMachineParts.Com)

Order Parts on Line at:  
**[www.FloorMachineParts.Com](http://www.FloorMachineParts.Com)**

Directly to Parts & Service:  
By Email: **[Shop@Michco.com](mailto:Shop@Michco.com)**  
By Fax: (517) 702-2041  
By Voice: Use numbers above.

**Serving the Cleaning Industry Since 1922**

Notice: All copyrighted material remains property of original owners, all trademarks are property of respective owners. Manuals are subject to Manufacturer's reproduction limitations. Originals or reproductions were provided by manufacturers through a request. We make no warranty as to the correctness of information provided in this document and you assume all risk.

# WHIRLAMATIC MODEL 2500

THIS PARTS LIST IS FOR MACHINES  
AFTER SERIAL NUMBER 259277.

# PARTS LIST



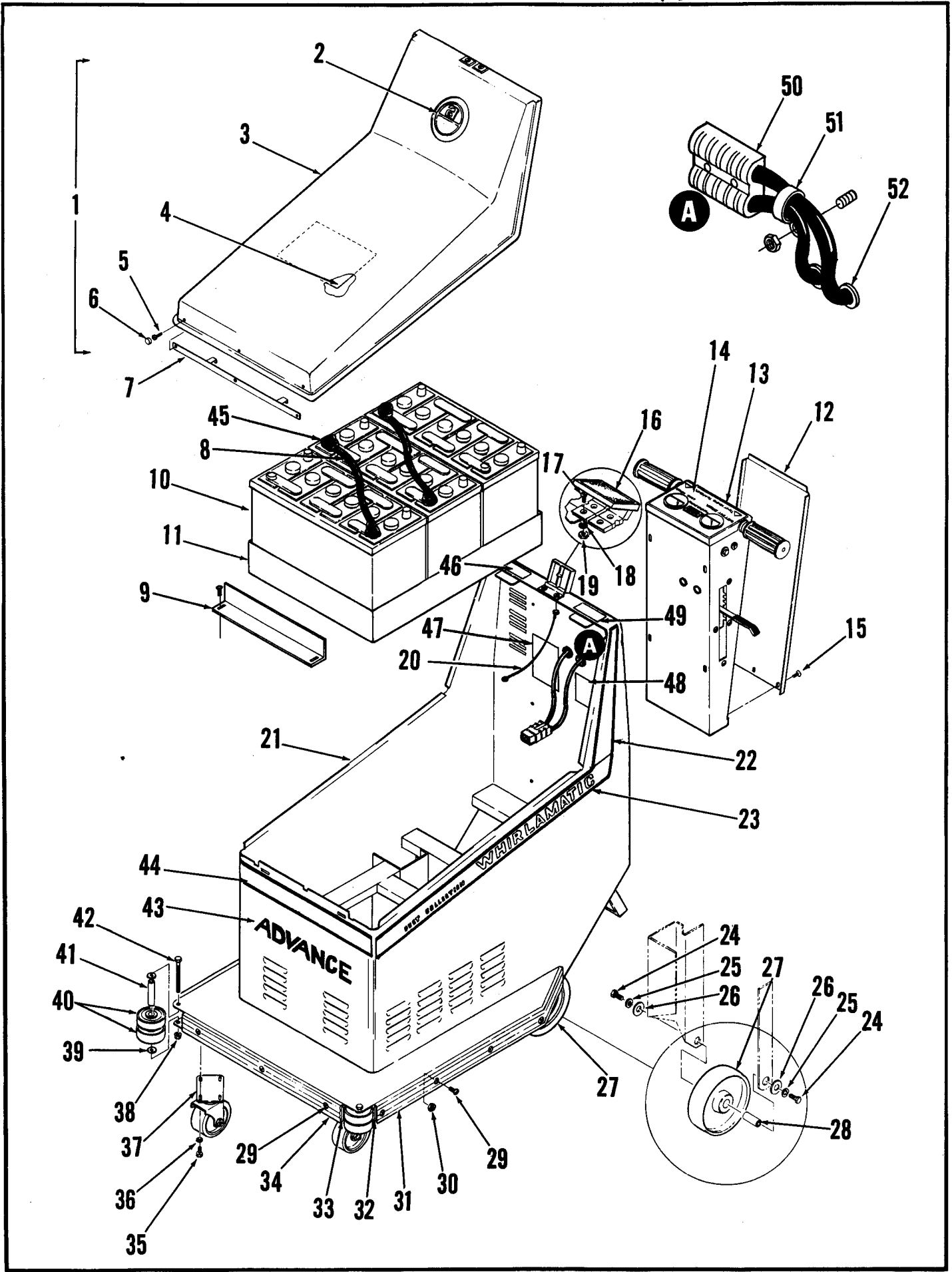
**ADVANCE**  
**MACHINE COMPANY**

INTERNATIONAL HEADQUARTERS, Plymouth, MN 55447-3408  
EUROPE, Llantrisant, Pontyclun, Mid-Glamorgan CF7 8YZ Wales, United Kingdom  
CANADA, 1295 Crestlawn Drive, Mississauga, Ontario L4W 1A9



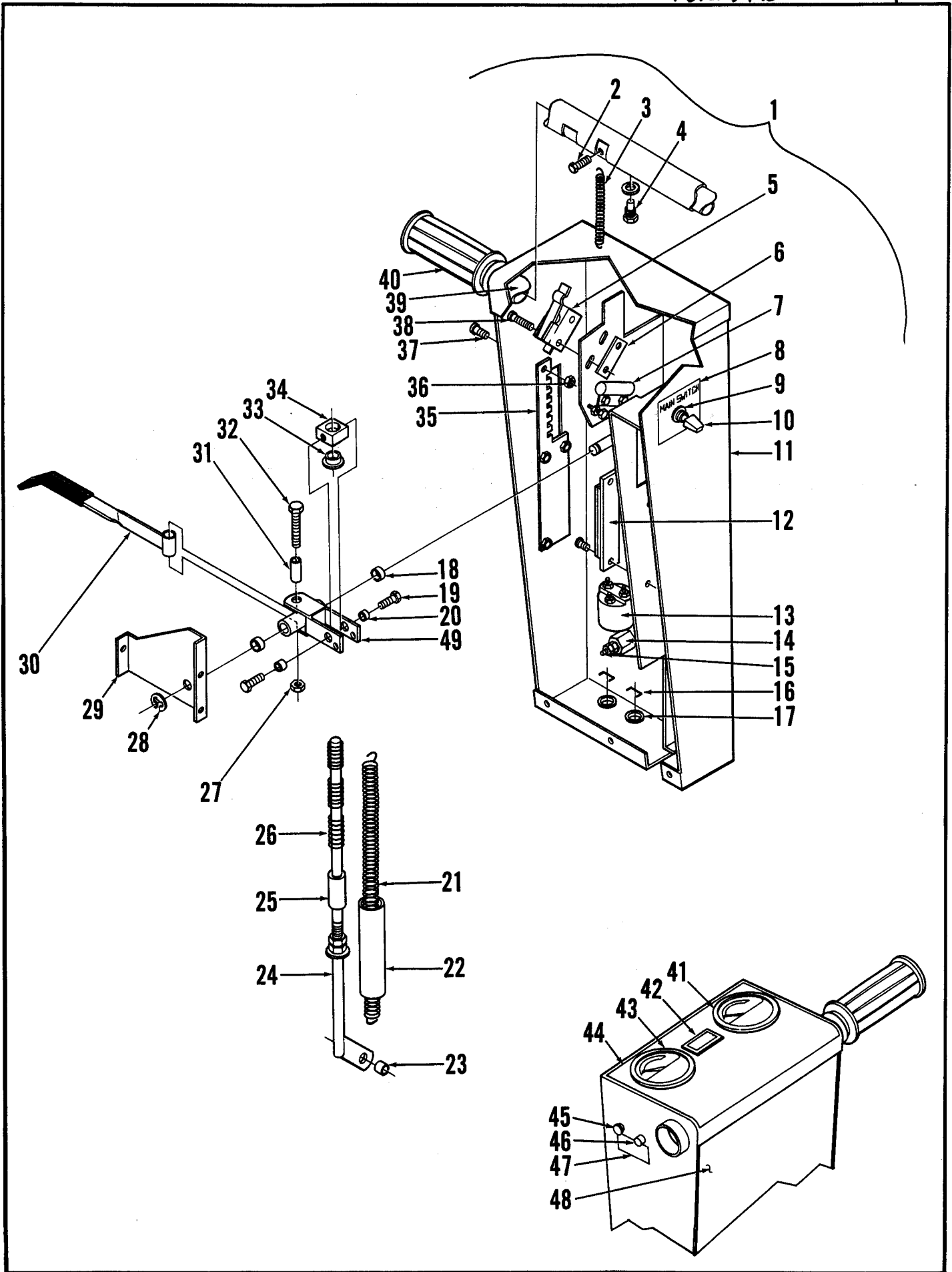
## Index for Form Number 042184

<b>Description</b>	<b>Location</b>	<b>page</b>
Control Handle	D3	3
Pad Drive	D5	5
Wheels, Shroud & Chassis	D1	1
Wiring Diagram & Accessories	D7	7



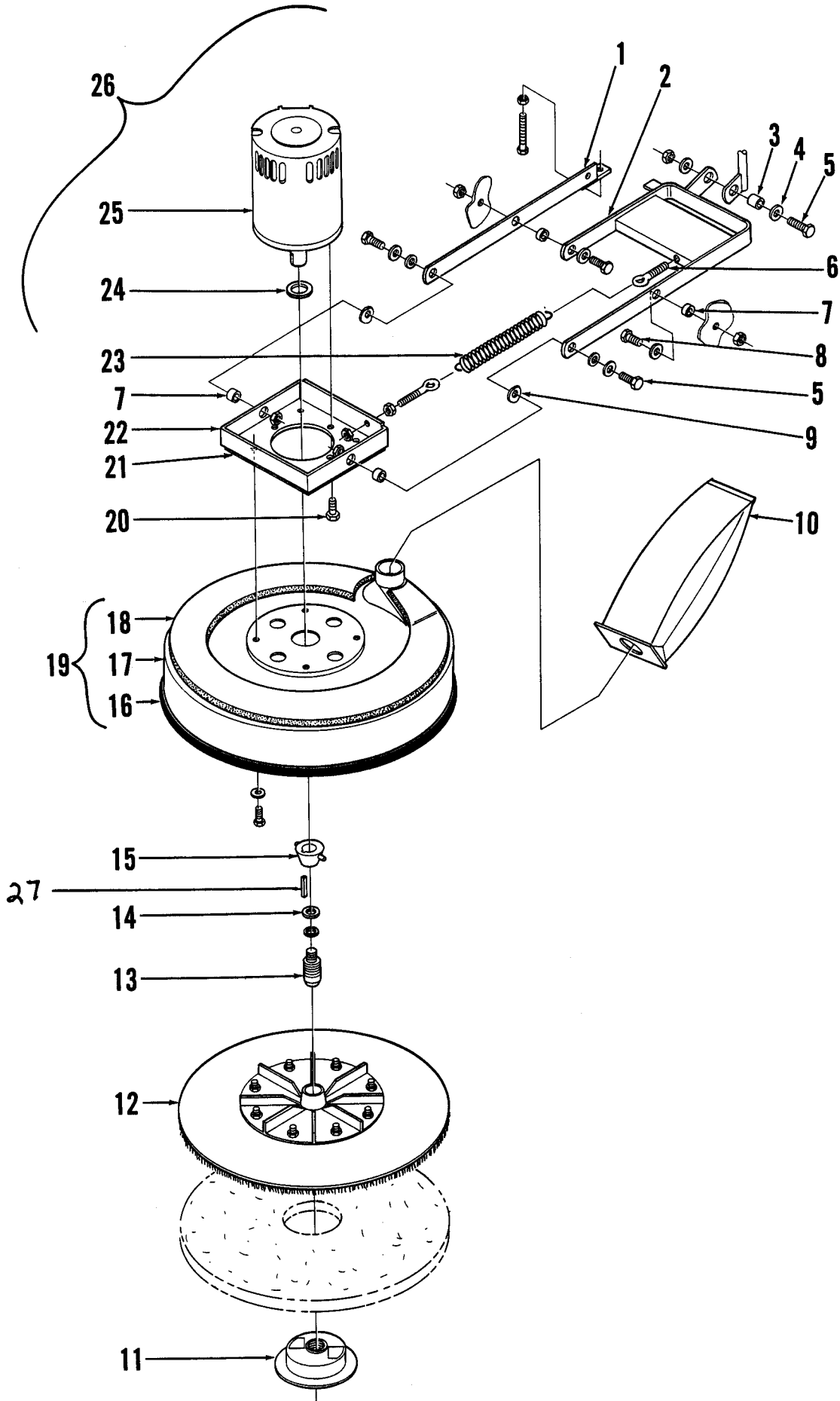
## HOUSING ASSEMBLY

Item	Part No.	Qty	Description	Item	Part No.	Qty	Description
1	391095	1	Shroud Assembly	37	206725	2	Swivel Caster
2	014042	1	Decal, Logo	38		2	Nut
3	391097	1	Shroud	39	371009	4	Washer
4	025565	1	Wiring Decal	40	363855	4	Bumper Wheel
5		3	Screw	41	386825	2	Bushing
6	387190	3	Snap Cap	42		2	Screw
7	386760	1	Bracket	43	014046	1	Decal, Advance
8	363936	2	Battery Cable	44	014041	1	Decal, Front Strap
9	391131	1	Battery Stop	45	372637	6	Boot
10	388013	3	12V Battery *	46	025294	1	Decal, Warning
	376014	6	6V Battery *	47	025576	1	Decal, Caution
11	388140	1	Battery Tray	48	025264	1	Decal, Cable Routing
	391141	1	Battery Tray Kit for 6V *	49	025296	1	Decal, Spanish
12	391087	1	Back Panel	50	391126	1	Connector Assembly
13	391071	1	Handle	51	469380	1	Clamp
14	025258	1	Panel Decal	52	157376	2	Grommet
15		3	#6 Screw				
16	391120	1	Draw Latch				* = Optional Accessory, not included
17		4	Screw				
18		4	Washer				
19		4	Nut				
20	261189	1	Rope Assembly				
21	391050	1	Main Chassis				
22	014038	1	Decal, Rear Stripe Left				
	014037	1	Decal, Rear Stripe Right				
23	014040	1	Decal, Side Stripe Left				
	014039	1	Decal, Side Stripe Right				
24		4	Screw				
25		4	1/4 Lock Washer				
26	454626	4	Washer				
27	391110	2	Wheel				
28	391100	2	Axle				
29		27	Screw				
30		27	Nut				
31	391101	2	Side Bumper				
32	391102	2	Side Bumper Strap				
33	391104	1	Front Bumper Strap				
34	391103	1	Front Bumper				
35		8	1/4-20 Screw				
36		8	1/4 Lock Washer				



## CONTROL HANDLE

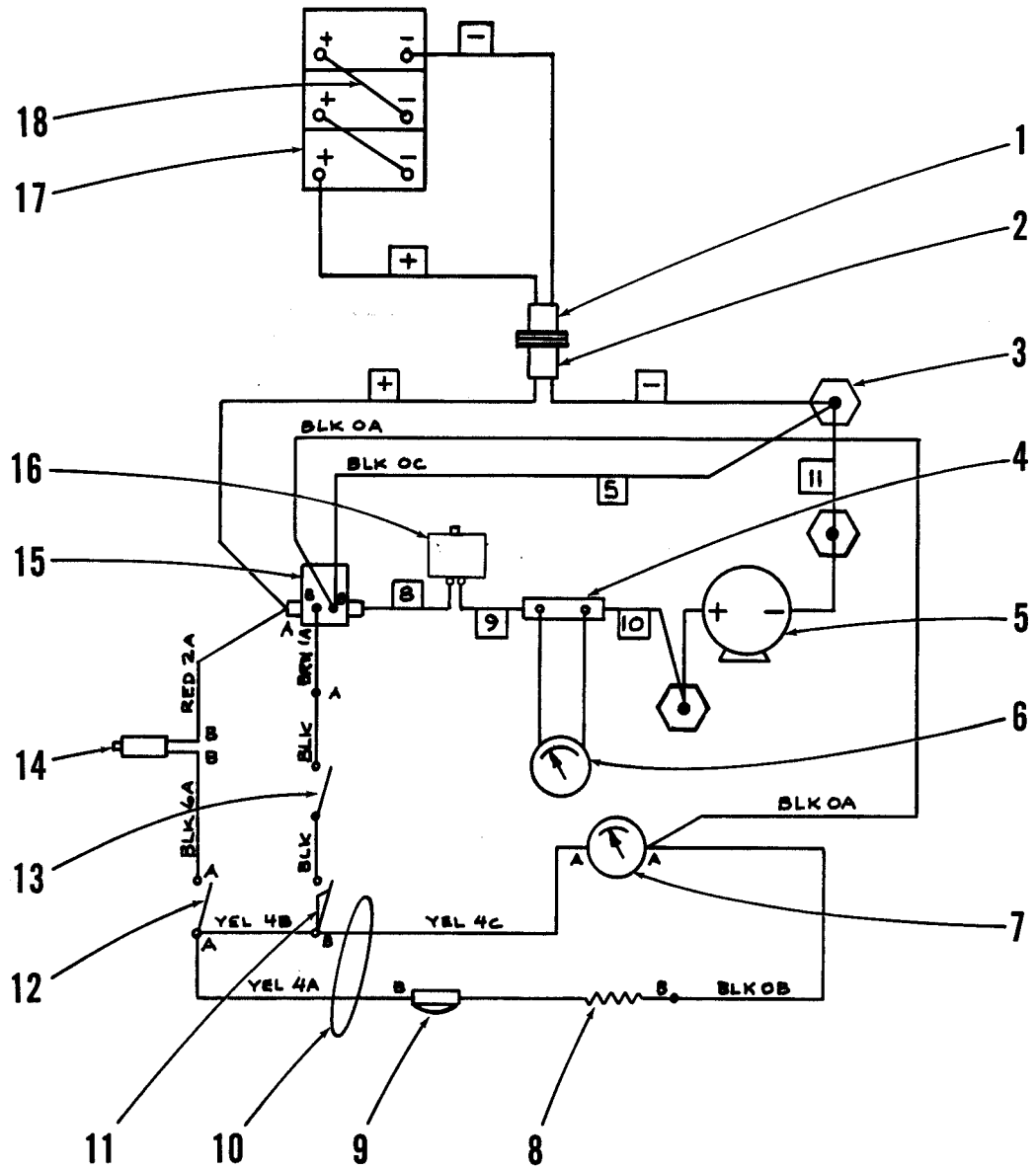
Item	Part No.	Qty	Description
1	391070	1	Handle Assembly
2	002591	1	#8-32 x 7/8 Screw
3	328790	1	Spring
4	234079	1	Screw
5	388019	1	Switch
6	385747	1	Nut Plate
7	388167	1	Mercury Switch
8	016112	1	Decal, Main Switch
9	372862	1	Washer
	372858	1	Offset Washer (inside)
10	207071	1	Switch
11	391071	1	Handle Weldment
12	386793	1	Shunt
13	395450	1	Solenoid
14	469858	1	Stand-Off
15	150274	1	Stud
16	320358	4	Strain Relief
17	301544	2	Grommet
18	368970	2	Bearing
19	001861	2	Screw
20	379298	2	Bushing
21	448119	1	Spring
22	391147	1	Tube
23	367206	1	Bushing
24	391083	1	Lift Rod Weldment
25	391151	1	Tube
26	372129	4	Spring
27	001976	1	Nut
28	321427	1	Retaining Ring
29	391075	1	Plate
30	391079	1	Lever Weldment
31	471220	1	Bushing
32	001833	1	Screw
33	391113	1	Flange Bearing
34	391115	1	Bearing Block
35	391082	1	Adjustment Plate
36	002010	7	Nut
37	002043	7	Screw
38	001979	2	Screw
39	388164	1	Tube
40	388545	2	Grip
41	391132	1	Ammeter
42	467410	1	Indicator Light
43	448677	1	Battery Meter
44	025258	1	Decal, Control Panel
45	391010	1	Circuit Breaker 80A
46	454538	1	Circuit Breaker 15A
47	025174	1	Decal, Circuit Breaker
48	391087	1	Back Panel
49	391076	1	Adjuster



## DRIVE UNIT AND DUST CONTROL

Item	Part No.	Qty	Description
1	391028	1	Strap
2	391025	1	Lift Arm
3	360627	1	Bushing
4	367214	6	Washer
5	001996	3	Bolt
6	457176	2	Eye Bolt
7	367206	4	Bushing
8	001895	2	Bolt
9	398056	2	Spring Washer
10	300349	1	Filter Bag (pkg of 10)
11	388111	1	Centering Cup
12	391089	1	Pad Holder Assembly
13	388455	1	Stud
14	180200	1	Washer
15	391093	1	Driver Assembly
16	391157	1	Edging Assembly
17	391153	1	Dust Shroud
18	391154	1	Foam Sound Reduction
19	391152	1	Dust Control Assembly <b>TSB 485 - G6</b>
20	002127	4	Bolt
21	209434	1	Gasket 27"
22	391155	1	Motor Plate
23	382000	1	Spring
24	475280	1	Washer
25	391020	1	Motor ** <b>TSB 541 - G3</b>
	183607	1	Carbon Brush (Set)
	183580	1	Brush Spring (Set)
26	391021	1	Drive Unit Assembly
27	740168	1	Key

**\*\* Note:** Motor 391020 is replaced by Motor Kit (part number 391221) which includes a new motor and instructions. New motor only is part number 391220, carbon brush set for new motor is part number 389371.



# WIRING DIAGRAM

Item	Part No.	Qty	Description
	025565	1	Decal, Wiring Diagram
1	391127	1	Plug Assembly
2	391126	1	Plug Assembly
3	469858	3	Stand-Off
4	386793	1	Shunt
5	391020	1	Motor
6	391132	1	Ammeter
7	448677	1	Battery Meter
8	395404	1	Resistor
9	467410	1	Indicator Light
10	391109	1	Wire Harness
11	388019	1	Switch
12	207071	1	Switch
13	388167	1	Switch
14	454538	1	Circuit Breaker 15A
15	395450	1	Solenoid
16	391010	1	Circuit Breaker 80A
17	388013	3	Battery 12V *
	376014	6	Battery 6V *
18	363936	2	Cable Assembly
*	372955	1	Semi-Automatic Battery Charger
*	372974	1	Automatic Battery Charger
*	391141	1	6 Volt Battery Kit (for installing (6) 6 Volt Batteries)

\* = Optional Accessory, not included