



# Electronic Service Manuals

This electronic document is provided as a service to our customers. We do not create the contents of the information contained in this document. Should you have detailed questions pertaining to the information contained in this document, you may contact Michco, or the manufacturer which provided the original information in this electronic deliverable. Michco's only part in this electronic deliverable was the electronic assembly process.

You may contact Michco through the following methods:  
Phone (517) 484-9312 or (800) 331-3339 MI, OH, IN only  
2011 N. High St. -- Lansing, Michigan -- 48906  
Fax: (517) 484-9836  
Email: [CustServ@Michco.com](mailto:CustServ@Michco.com)  
Web site: [www.Michco.Com](http://www.Michco.Com)  
Parts Web site: [www.FloorMachineParts.Com](http://www.FloorMachineParts.Com)

Order Parts on Line at:  
**[www.FloorMachineParts.Com](http://www.FloorMachineParts.Com)**

Directly to Parts & Service:  
By Email: **[Shop@Michco.com](mailto:Shop@Michco.com)**  
By Fax: (517) 702-2041  
By Voice: Use numbers above.

**Serving the Cleaning Industry Since 1922**

Notice: All copyrighted material remains property of original owners, all trademarks are property of respective owners. Manuals are subject to Manufacturer's reproduction limitations. Originals or reproductions were provided by manufacturers through a request. We make no warranty as to the correctness of information provided in this document and you assume all risk.

**CONVERTAMATIC**

**MODEL TRAC 380 BHD**

**SERIAL NO. 011899**

**FORM NO. 042100**

**APRIL 1984**

# **PARTS LIST**



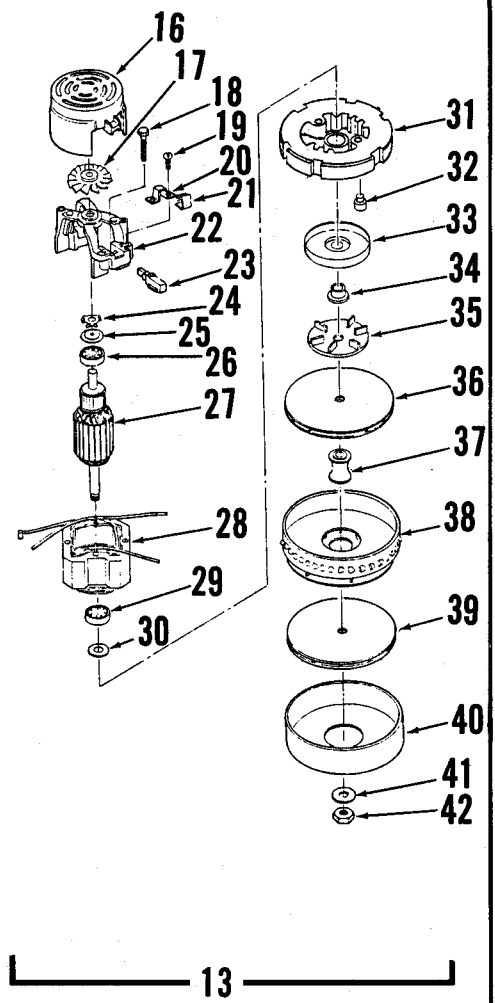
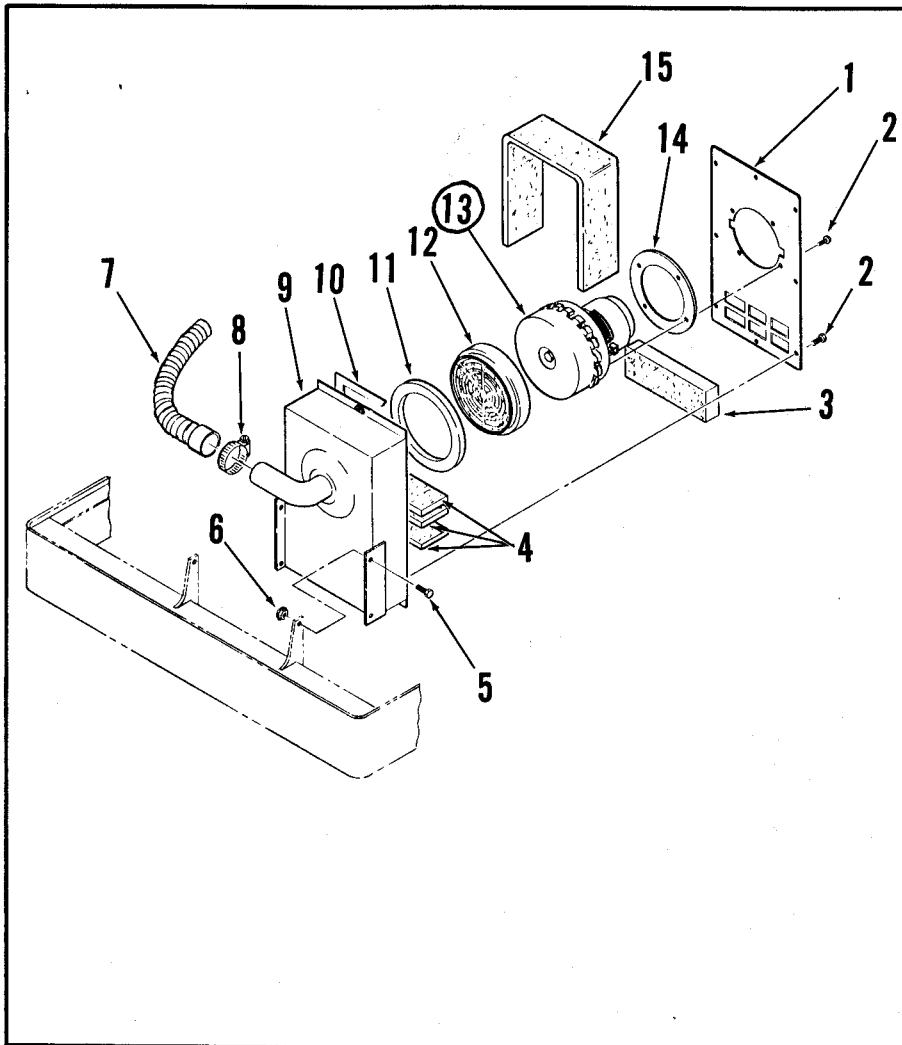
**ADVANCE  
MACHINE COMPANY**

**INTERNATIONAL HEADQUARTERS**, Spring Park, Minnesota 55384-0275  
**EUROPE**, 4 Rue Jean Engling, L-1466 Luxembourg  
**CANADA**, 1295 Crestlawn Drive, Mississauga, Ontario L4W 1A9

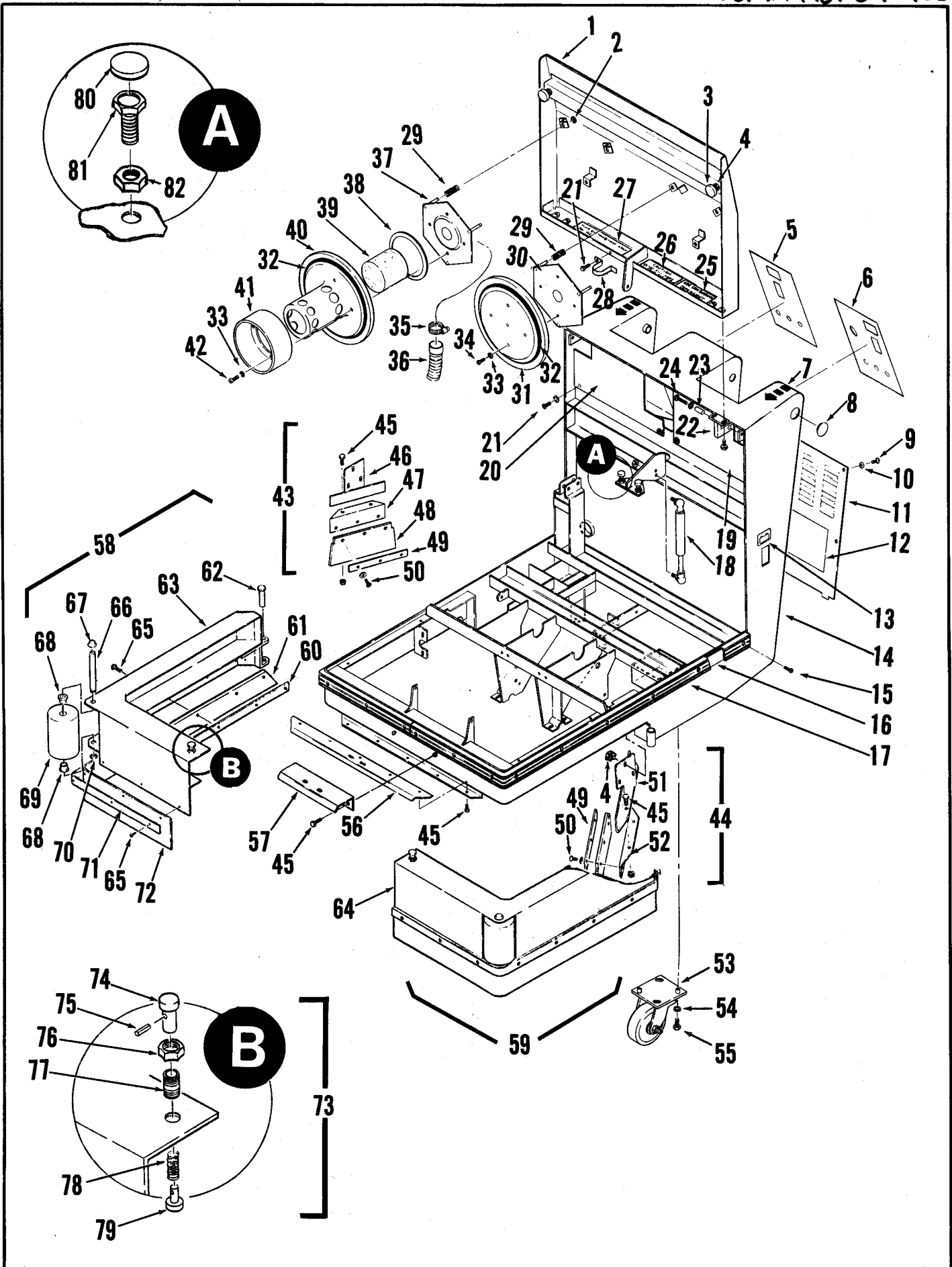


## INDEX FOR FORM NUMBER 042100

<u>Description</u>	<u>Location</u>	<u>Page</u>
Brush Drive	C10	8
Castors, Skirts & Hood	C4	2
Controls & Electrical Panel	D1	12
Recovery Tank Drain Valve	C7	5
Squeegee	C12	10
Tanks & Solution Valve	C6	4
Vacuum Motor	C3	1
Wheel Drive & Brake	C8	6
Wiring Diagram	D3	14

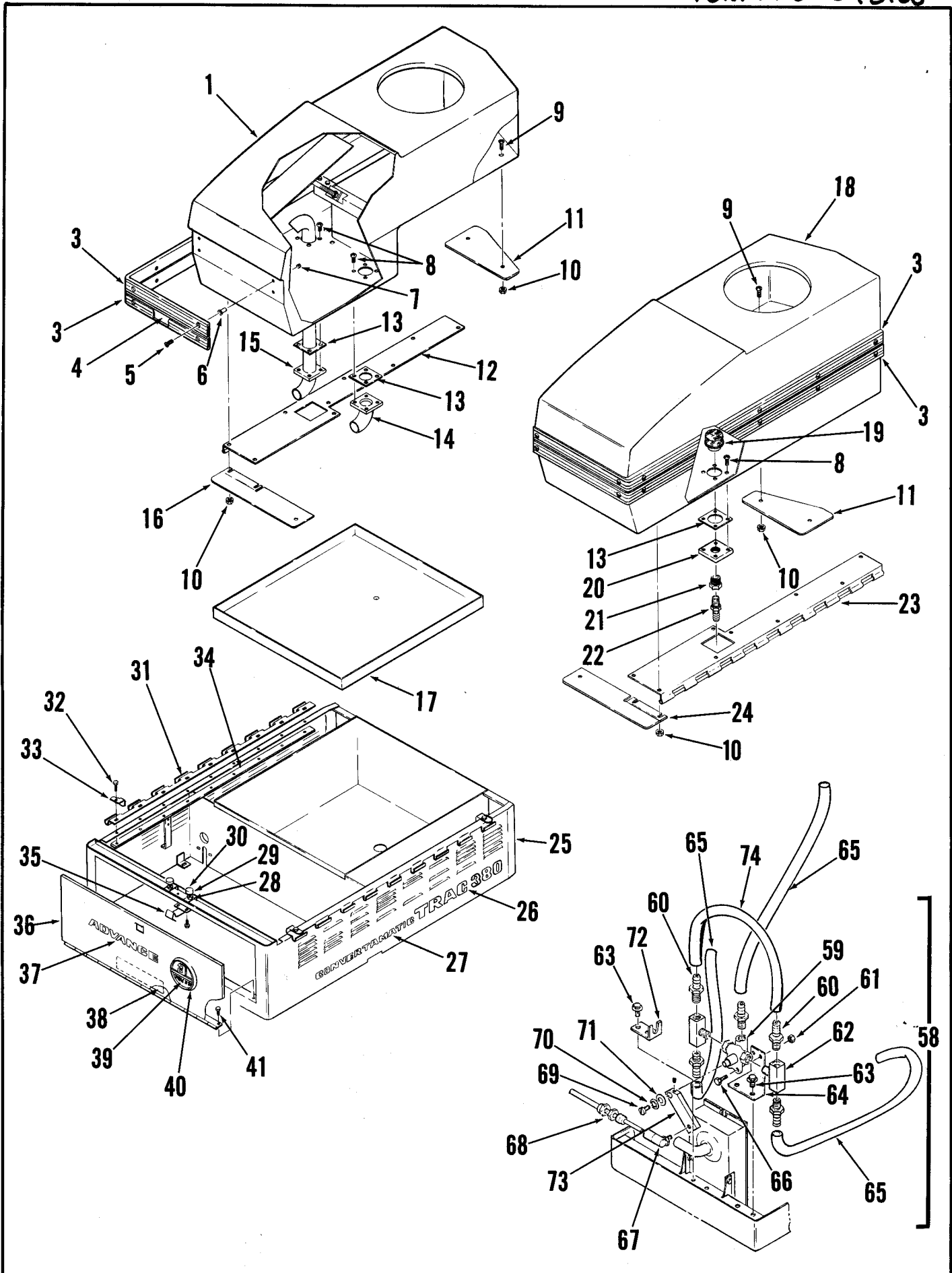


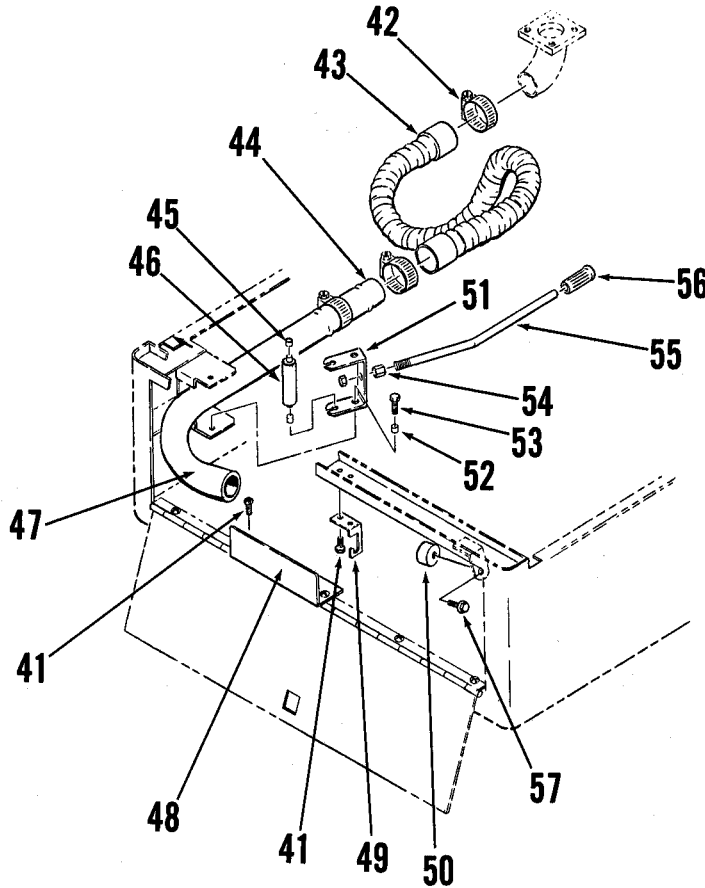
ITEM	PART NO	QTY	DESCRIPTION	ITEM	PART NO	QTY	DESCRIPTION
1	377 344	1	COVER	40	203 408	1	SHELL
2		12	SCREW, PAN HD. #10-24 X 1/2 HPS	41	203 432	1	WASHER
3	380 922	1	FILTER	42	203 440	1	NUT
4	376 396	3	FOAM ACCOUSTICAL				
5		4	SCREW, HEX HD. 1/4-20 X 1/2				
6		4	WHIZ NUT 1/4-20				
7	377 668	1	HOSE, VAC				
8	329 145	2	CLAMP, HOSE				
9	377 342	1	HOUSING				
10	200 754	1	GASKET				
11	385 437	1	GASKET 4.8 I.D. X 6.2 O.D.				
12	384 898	1	FILTER				
13	202 305	1	MOTOR, VAC				
14	209 325	1	GASKET				
15	377 346	1	FOAM, ACCOUSTICAL				
16	208 110	1	HOUSING				
17	303 591	1	FAN				
18	372 574	2	SCREW				
19	372 570	5	SCREW				
20	207 285	2	CLAMP				
21	202 302	2	CLIP				
22	207 234	1	BRACKET, COMMUTATOR END				
23	372 572	2	BRUSH, MOTOR				
24	202 843	1	SPRING, LOAD				
25	249 735	1	DISC				
26	203 587	1	BEARING				
27	372 590	1	ARMATURE				
28	208 280	1	FIELD				
29	228 051	1	BEARING				
30	203 461	1	WASHER				
31	372 578	1	BRACKET, FAN END				
32	372 580	1	VALVE, CHECK				
33	372 582	1	SHELL, AIR SEAL				
34	372 584	1	SPACER				
35	372 586	1	FAN				
36	372 588	1	FAN, ROTATING				
37	203 516	1	SPACER				
38	203 394	1	FAN, STATIONARY				
39	372 588	1	FAN, ROTATING				



## CHASSIS, HOOD &amp; RELATED PARTS

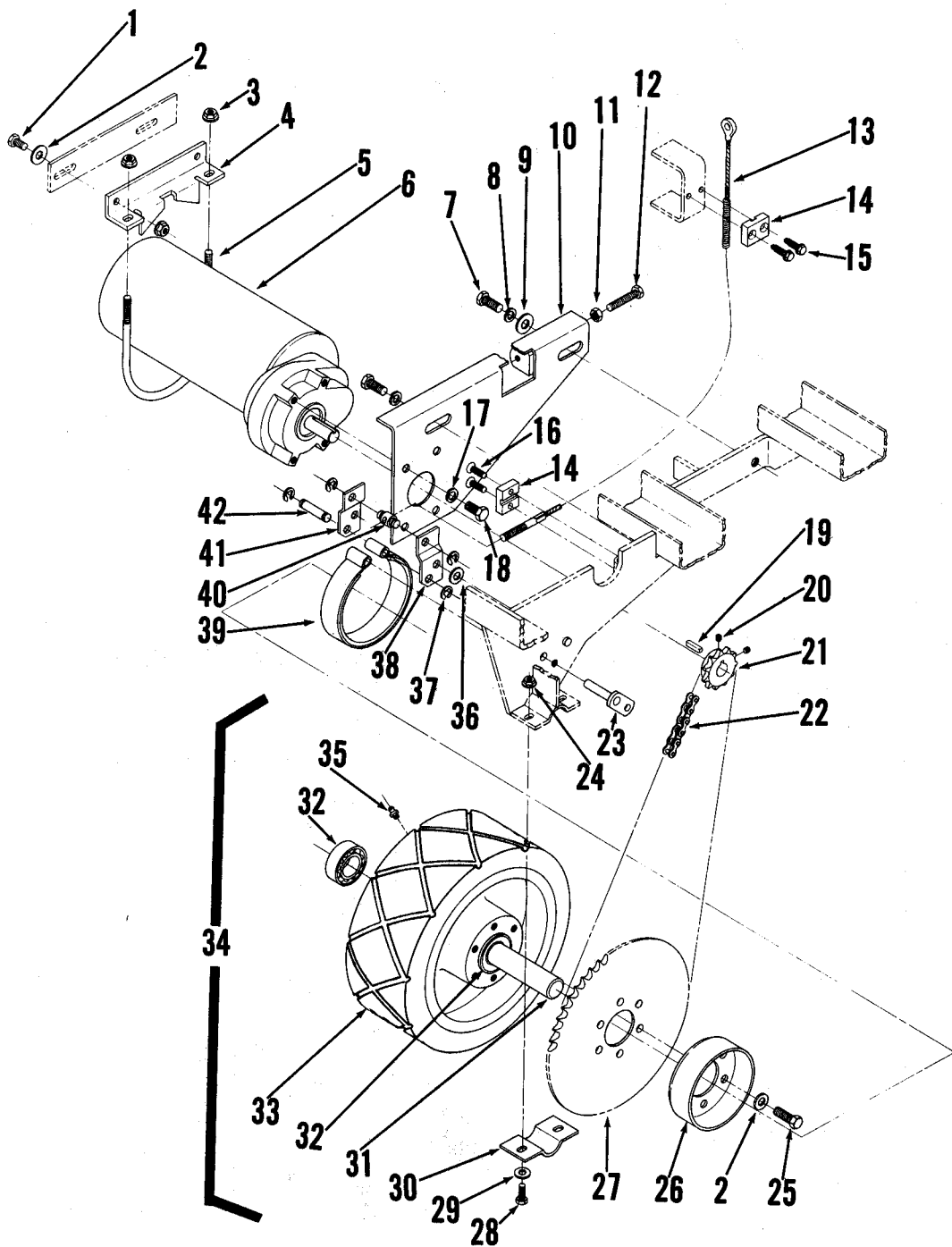
ITEM	PART NO	QTY	DESCRIPTION
1	377 624	1	HOOD
2	321 125	6	RING, RETAINING
3	386 312	2	STOP, HOOD .812 IDA
4		2	NUT, HEX 1/4-20
5	016 944	1	DECAL, CONTROL PANEL
6	016 942	1	DECAL, CONTROL PANEL
7	025 286	2	DECAL, "ARROW"
8	388 608	2	BUTTON, PLUG
9		5	SCREW, OVAL HD. #10-24 X 3/8 HP-5
10	449 340	5	WASHER, FINISHING
11	377 621	1	PANEL, REAR
12	016 972	1	DECAL, WIRING
13	016 324	1	DECAL, CHARGER PLUG
14	377 080	1	CHASSIS
15		18	SCREW, PAN HD. #10-24 X 3/4
16	377 640	2	STRAP, BUMPER
17	377 644	2	BUMPER, BLACK
18	385 238	1	CYLINDER, HOOD
19	377 628	1	COVER, LEFT INSIDE
20	377 626	1	COVER, RIGHT INSIDE
21		10	SCREW, PAN HD. #10-24 X 3/8 HP-5 W/FW
22	376 052	2	HINGE, HOOD
23	471 220	2	BUSHING .25 X .37 X 1.0
24		2	SCREW, HEX HD. 1/4-20 X 1 1/2
25	016 185	1	DECAL "USE LOW SUDZING DETERGENT"
26	016 057	1	DECAL "CAUTION DO NOT FILL ABOVE 3 INCHES"
27	025 339	1	DECAL "FLUSH OUT TANK & HOSES AFTER EA. USE"
28	376 428	1	CLAMP, HOSE
29	379 170	6	SPRING, COMPRESSION .60 X 2.00
30	379 192	1	MOUNT, CENTERING
31	379 186	1	COVER
32	385 245	2	GASKET 1/4 X 1/2 X .39.70
33		8	WASHER, SAE #10 BRASS
34		4	SCREW, PHIL. HD. #10-24 X 3/8 BR.
35	329 145	1	CLAMP, HOSE
36	377 668	1	HOSE, VACUUM 1.5 X 105"
37	379 197	1	MOUNT, CENTERING
38	385 247	1	GASKET
39	385 198	1	FLOAT, FOAM CYLINDER
40	385 237	1	COVER
41	379 206	1	DEFLECTOR
42		4	SCREW, PHIL HD. #10-24 X 5/8 BR.
43	377 506	1	BLADE ASSEMBLY - RIGHT
44	377 508	1	BLADE ASSEMBLY - LEFT
45		11	SCREW, HEX HD. 1/4-20 X 1/2 4 W/WHIZ NUT
46	377 534	1	BRACKET, MOUNTING
47	377 544	1	BRACKET, ANGLE
48	377 550	2	BLADE, RUBBER
49	377 548	2	STRAP, BLADE
50		8	SCREW, PHIL PAN HD. #10-24 X 5/8 8 W/SAE WASHER
51	377 536	1	BRACKET, MOUNTING
52	377 542	1	BRACKET, ANGLE
53	470 582	2	CASTER, SWIVEL
54		8	WASHER, LOCK 1/4
55		8	SCREW, HEX HD. 1/4-20 X 3/4
56	389 139	1	PLATE, SKIRT LOCKING
57	376 578	1	BRACKET
58	377 584	1	SKIRT ASSEMBLY - RIGHT
59	377 586	1	SKIRT ASSEMBLY - LEFT
60	377 524	2	NUT PLATE
61	377 522	2	BLADE
62	360 147	2	PIN, HINGE
63	377 588	1	SKIRT - RIGHT
64	377 590	1	SKIRT - LEFT
65	372 929	20	SCREW, PAN HD. #10-24 BLK
66	376 542	2	ROD 1/2
67	376 544	2	CAP, ROD 1/2
68	111 503		BEARING, SLEEVE
69	376 540	2	ROLLER
70	468 834	2	RING, RETAINING
71	377 576	2	STRAP
72	377 578	2	BLADE
73	365 548	2	LOCK ASSEMBLY
74	201 405	2	KNOB
75	201 472	2	PIN
76	201 413	2	NUT, HEX
77	201 383	2	SOCKET
78	201 448	2	SPRING, COMPRESSION
79	201 391	2	PIN
80	401 788	2	CAP, SNAP-ON 3/4 HEX
81	401 783	2	LEVELER, TANK
82		2	NUT, HEX 5/16-18





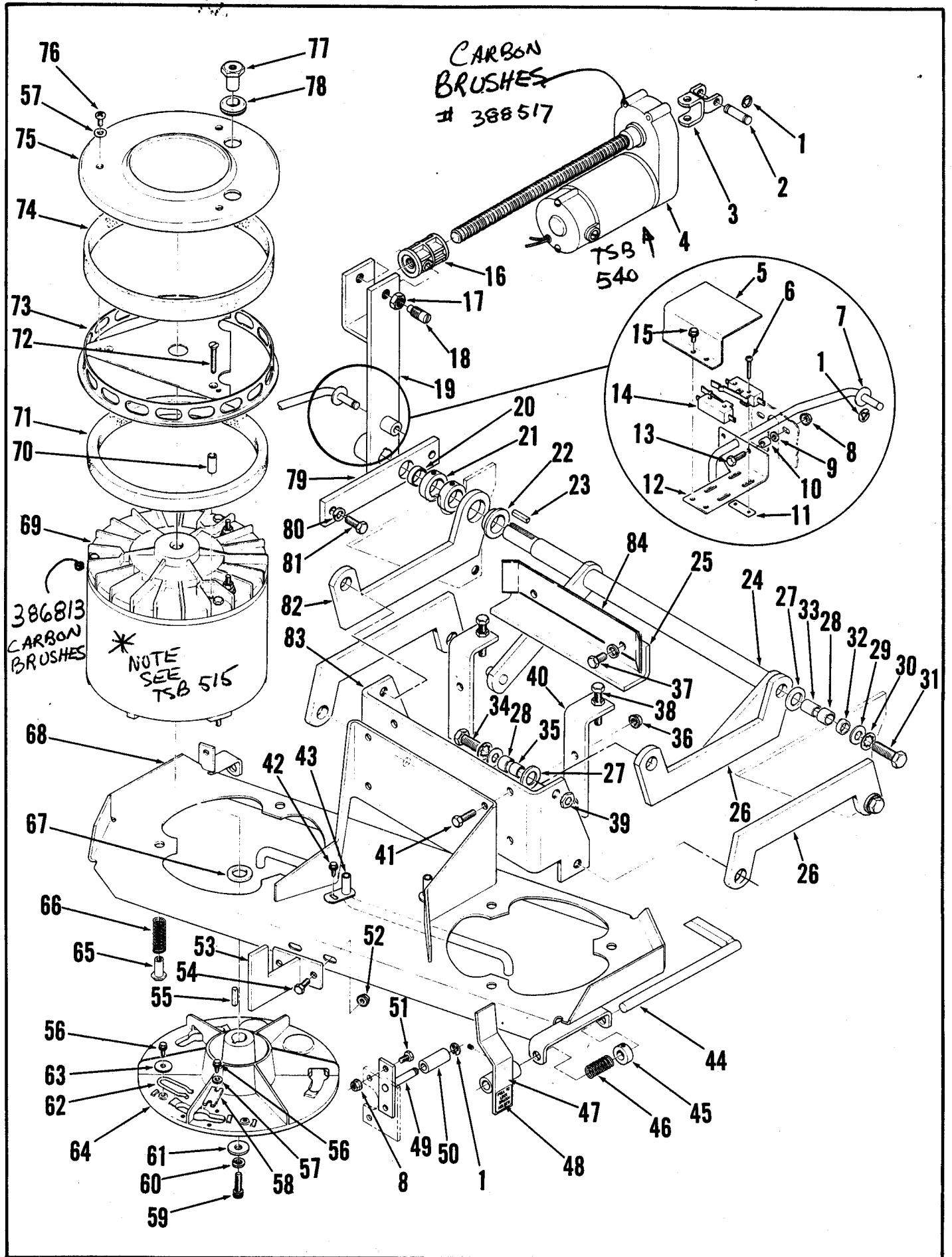
### BATTERY HOUSING & TANK ASSEMBLIES

ITEM	PART NO	QTY	DESCRIPTION	ITEM	PART NO	QTY	DESCRIPTION
1	377 014	1	TANK, RECOVERY	37	016 973	1	DECAL "ADVANCE"
3	377 280	4	BUMPER, BLACK	38	025 363	1	DECAL "CAUTION"
4	377 276	4	STRAP	39	016 968	1	DECAL, "TRAC 380"
5	376 614	28	SCREW S.S. #10-32 X 1.00	40	016 398	1	EMBLEM, ADVANCE
6	376 608	28	WELL-NUT	41		7	SCREW, HEX WASHER 1/4-20 X 1/2 HP-5
7	376 616	28	CAP-RUBBER	42	329 145	3	CLAMP, HOSE
8		12	SCREW, PHIL. RD. HD. BRASS 1/4-20 X 1/2	43	372 222	1	HOSE, 1 1/2 I.D. X 24"
9		24	SCREW, PHIL. RD. HD. BRASS 1/4-20 X 5/8	44	377 670	1	COUPLER, EXTENSION
10		24	WHIZ NUT-FLANGE 1/4-20	45	372 624	2	BEARING
11	377 308	2	PLATE, REAR	46	372 650	1	ROLLER, DRAIN VALVE
12	377 284	1	HINGE	47	380 712	1	TUBE, DRAIN
13	380 763	3	GASKET	48	377 630	1	ANGLE, DRAIN HOSE
14	376 068	1	TUBE WELDMENT	49	372 662	1	LATCH, VALVE LEVER
15	377 295	1	TUBE WELDMENT	50	377 634	1	PLUG
16	377 309	1	PLATE, FRONT	51	372 652	1	PIVOT, LEVER
17	389 110	1	TRAY, BATTERY	52	368 989	2	BUSHING .25 X .37 X .30
18	377 011	1	TANK, SOLUTION	53		2	SCREW, HEX HD. 1/4-20 X 1/2 W/FW
19	379 125	1	STRAINER	54	372 958	1	NUT, HEX 5/16-18
20	379 202	1	PLATE	55	377 264	1	HANDLE, VALVE LEVER
21	751 686	1	BUSHING 3/4 X 3/8 BRASS	56	477 193	1	GRIP, HANDLE
22	249 926	1	BARB 3/8 X 3/8 NYLON	57		1	SCREW, HEX HD. 1/4-20 X 1/2
23	377 282	1	HINGE	58	377 674	1	SOLUTION VALVE ASSEMBLY
24	377 311	1	PLATE, FRONT	59	368 881	1	VALVE, SOLUTION
25	377 117	1	BATTERY CASE	60	155 640	5	BARB
26	016 970	2	DECAL "TRAC 320"	61		2	NUT, HEX 1/4-20
27	016 971	2	DECAL "TRAC 380"	62	372 506	2	TEE
28	016 952	2	DECAL "CONVERTAMATIC"	63		4	SCREW, HEX WASHER HD. 1/4-20 X 1/2 HP5
29	401 783	2	NUT, HEX 5/16-18	64	377 676	1	BRACKET
30	401 788	2	LEVELER, TANK	65	377 664	1	TUBE .375 X 20"
31	377 288	2	CAP, SNAP-ON	66		2	SCREW, HEX HD. 1/4-20 X 3/4
32		18	HINGE	67	488 290	1	BALL JOINT
33	381 053	4	SCREW, HEX HD. #10-24 X 1/2	68	377 002	1	CABLE, SOLUTION CONTROL
34	377 290	2	CLIP, HINGE	69		1	SCREW, PAN HD. #8-32 X 3/8
35	372 700	1	NUT PLATE - HINGE	70		1	WASHER, SHAKEPROOF #8
36	377 139	1	LATCH, DOOR	71		1	WASHER, FLAT #8
			DOOR, BATTERY CASE	72	377 262	1	BRACKET
				73	377 672	1	ARM
				74	379 108	1	TUBE PVC 3/8 X 7 1/2



## TRACTION DRIVE & BRAKE ASSEMBLY

Item	Part No.	Qty	Description
1		2	Screw, Hex Head 5/16-18 x 3/4
2		8	Washer, 5/16 Flat
3		4	Nut, 5/16-18 Whiz
4	388682	1	Angle, Motor Mount
5	388686	1	Clamp, Bracket
6	388510	1	Drive Assembly 3/4 HP <b>TSB 424 - G6</b>
	388515	1	Drive Motor, 36 V, 3/4 HP
	386263	1	Carbon Brush Set <b>TSB 506 - G2</b>
7		2	Screw, Hex Head 1/2-13 x 7/8
8		2	Washer, 1/2 Lock
9		2	Washer, 1/2 Flat
10	388692	1	Bracket, Motor Mount
11		1	Nut, 5/16-18 Hex
12		1	Screw, Hex Head 5/16-18 x 1-3/4
13	376386	1	Brake Cable Assembly
14	477884	2	Clamp, Cable
15		2	Screw, Hex Washer Head 1/4-20 x 1 HP5
16		2	Screw, Flat Head 1/4-20 x 1
17		4	Washer 3/8 Lock
18		4	Screw, Hex Head 3/8-16 x 3/4
19	740168	1	Key, Square 3/16 x 1
20		2	Screw, Set 1/4-20 x 1/4
21	388688	1	Sprocket <b>TSB 424 - G6</b>
22	468884	1	Chain #40 x 65 <b>TSB 424 - G6</b>
23	388666	1	Pin Weldment
24		4	Nut, 1/4-20 Whiz
25		6	Screw, Hex Head 5/16-18 x 1-1/4
26	388702	1	Drum, Brake
27	388700	1	Sprocket
28		4	Screw, Hex Head 1/4-20 x 1
29		4	Washer, 1/4 Flat
30	388937	2	Clamp
31	388698	1	Axle
32	378380	2	Bearing, Ball
33	376628	1	Wheel 10.00 x 4.00
34	376626	1	Wheel Assembly
35	344362	1	Fitting, WBE 1/4-28
36		A/R	Washer, 3/8 Flat
37		4	Ring, Retaining 3/8
38	388676	1	Brake Lever, Left
39	402745	1	Brake Strap
40	388674	1	Pivot, Brake Cable
41	388678	1	Brake Lever, Right
42	388672	2	Pin, Brake Strap

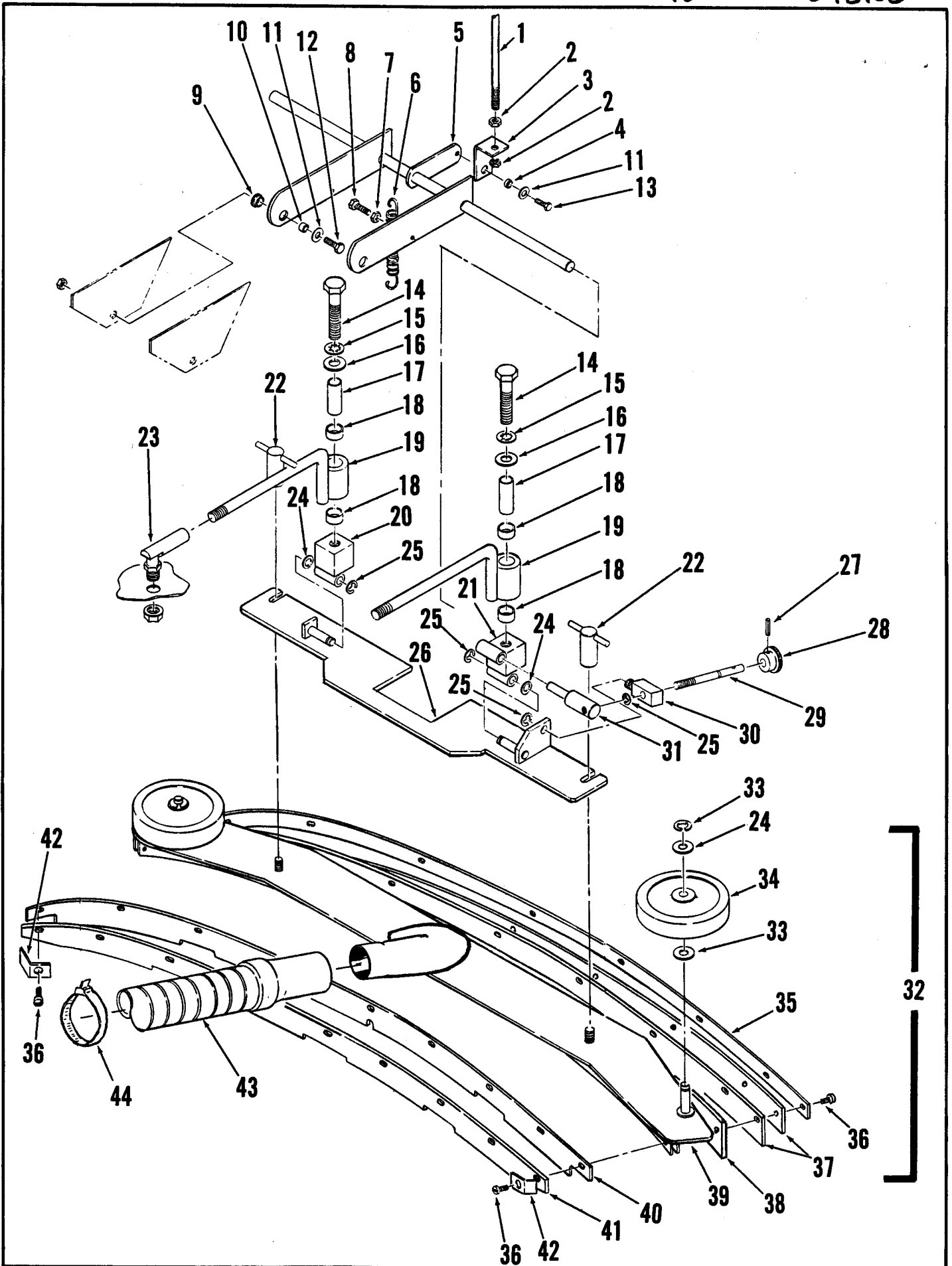


## BRUSH DRIVE UNIT ASSEMBLY

Item	Part No.	Qty	Description	Item	Part No.	Qty	Description
1	321427	7	Ring, Retainer 3/8	49	377236	2	Bracket Weldment
2	388672	2	Pin	50	249952	2	Bushing
3	377170	1	Yoke Weldment	51		4	Screw, 1/4-20 x 5/8
4	388518	1	Motor, Gear <b>TSB 540, F-11</b>	52		2	Nut, Whiz 5/16-18
*	388517	1	Carbon Brush Kit (for 388518)	53	377248	1	Guide Weldment
*	470431	1	Carbon Brush Kit (for 391627)	54		2	Screw, 5/16-18 x 3/4
5	377648	1	Shield, Switch	55	370010	2	Key, Square
6		4	Screw, #6-32 x 1-1/8	56		6	Screw, #10-24 x 3/8 HP-5
7	377636	1	Lever, Switch	57		4	Washer, # 10 Flat
8		6	Nut, Whiz 1/4 - 20	58	366455	2	Plate, Stop
9		2	Washer, 1/4 Flat	59	180196	2	Screw, 5/16-24 x 1
10	321532	2	Bushing	60		2	Washer, 5/16 Lock
11	385747	2	Nut Plate	61	180200	2	Washer
12	377646	1	Bracket, Switch	62	366463	2	Clip, Spring
13		2	Screw, 1/4-20 x 7/8	63	151114	2	Washer
14	388019	2	Switch, Snap SPST	64	364042	2	Holder, Brush
15		2	Screw, #10-24 x 3/8	65	377244	6	Nut, Spacer
16	388520	1	Nut, Gear Motor	66	377253	6	Spring, Compression
17		2	Nut, 1/2-13	67	367192	2	Washer
18	377174	2	Screw	68	377150	1	Base, Motor
19	377162	1	Lever Weldment	69	377010	2	Motor, 36 VDC TSB 515, 5-9
20	250634	1	Bearing, Sleeve	*	386813	1	Carbon Brushes (for 377010)
21	444820	2	Collar	70	207489	6	Bushing
22	377196	1	Bearing, Flanged	71	206058	2	Gasket, Motor
23	740168	1	Key	72		6	Screw, #10-24 x 1
24	377178	1	Lever Weldment	73	180008	2	Bracket Weldment
25	377650	1	Plate, Stop	74	180032	2	Filter
26	377194	3	Arm Weldment	75	386691	2	Cover, Motor
27	367192	7	Washer	76		6	Screw, #10-24 x 1/2
28	367168	7	Bearing, Sleeve	77	386988	4	Standoff
29	367214	7	Washer	78	760212	4	Grommet
30		7	Washer, Shakeproof 1/2	79	377176	1	Bar
31		1	Screw, 1/2-13 x 1-1/2	80		4	Washer, 3/8 Lock
32	478781	2	Bearing Sleeve	81		2	Screw, 3/8-16 x 7/8
33	367486	1	Bushing	82	377186	1	Arm Weldment
34		6	Screw, 1/2-13 x 1-1/8	83	377160	1	Bracket
35	367206	6	Bushing	84	377652	1	Guard
36		4	Nut, Whiz 3/8-16	**	505790	2	Pad Holder
37		2	Screw, 3/8-16 x 5/8	**	505791	2	Magna-Grit 46 Brush
38		2	Screw, 3/8-16 x 2	**	505792	2	DYna-Grit 80 Brush
39	441236	6	Nut, 1/2 Spring	**	505793	2	Aglite-Grit 500 Brush
40	377632	2	Bracket	**	505794	2	Prolene Brush
41		4	3/8-16 x 1-1/8 Bolt	**	505795	2	Prolite Brush
42		2	Screw, #10-24 x 1/2 HP-5	**	505796	2	Union Mix Brush
43	376346	2	Pipe, Solution	**	505797	2	MidGrit 240 Brush
44	377224	2	Lock Weldment	**	505798	2	MidLite 180 Brush
45	152811	2	Collar				
46	171123	2	Spring				
47	377230	2	Handle Weldment				
48	016974	2	Decal, Brush Lock				

\* = Not Shown

\*\* = Optional, Not Included



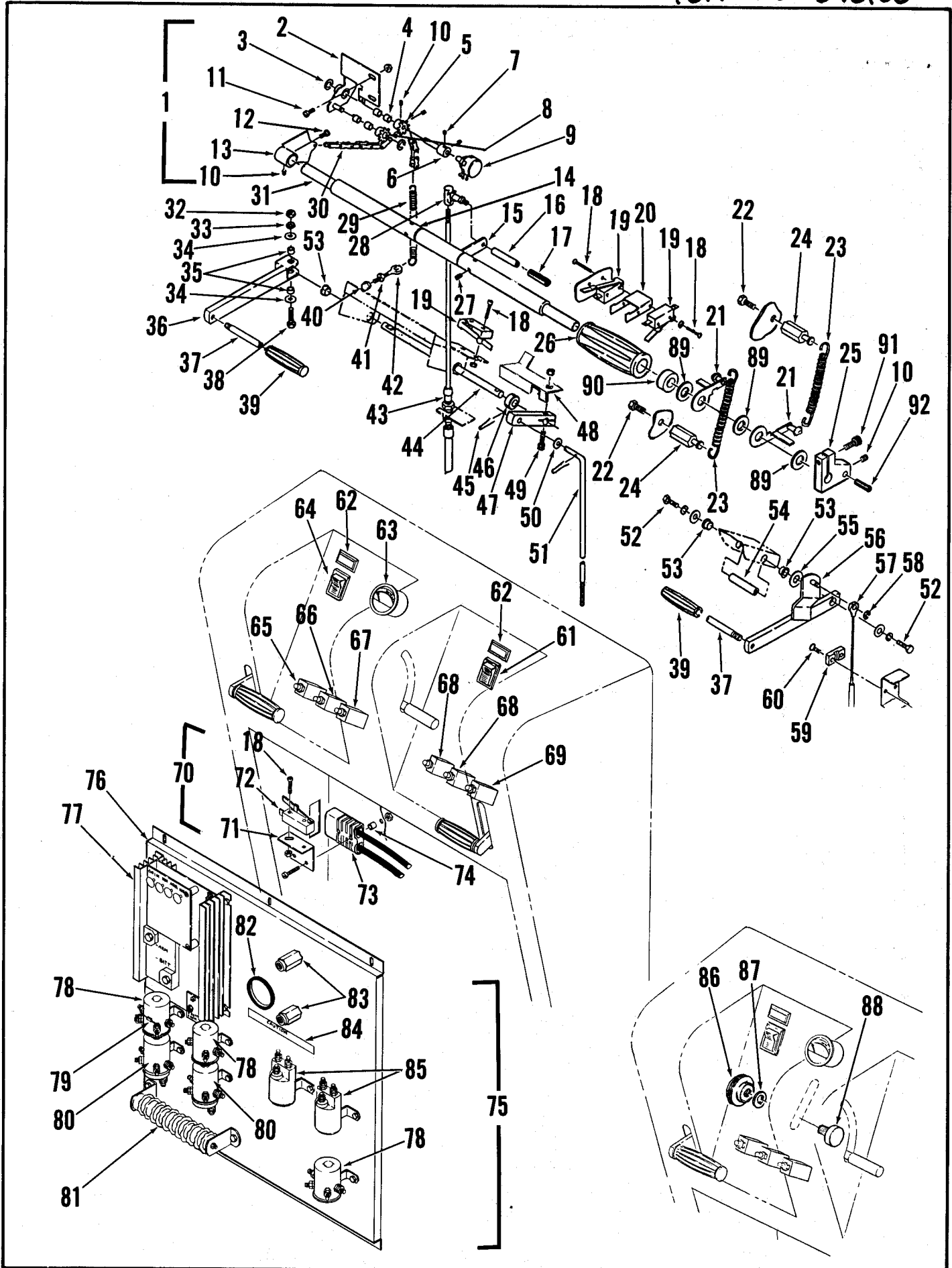
## SQUEEGEE ASSEMBLY

ITEM	PART NO	QTY	DESCRIPTION
1	377 780	1	ROD
2		2	NUT, HEX JAM 1/4-20
3	377 754	1	YOKE
4	163 872	1	BUSHING
5	377 744	1	LIFTER, SQUEEGEE
6	365 769	1	SPRING, EXTENSION
7		1	NUT, HEX JAM #10-24
8		1	SCREW, HEX HD. #10-24 X 3/4 HP-5
9	324 505	2	BEARING, FLANGE .376
10	475 411	2	BUSHING .25 X .38 X .48
11		3	WASHER, FLAT 1/4 SAE
12		2	SCREW, HEX HD. 1/4-20 X 1"
13		1	SCREW, HEX HD. 1/4-20 X 3/4 HP-5
14		2	SCREW, HEX HD. 1/2-13 X 2 1/2
15		2	WASHER, SHAKEPROOF 1/2 SAE
16		2	WASHER, FLAT 1/2 SAE
17	377 752	2	BUSHING, .503 X .62 X 1.75
18	453 655	4	BEARING, SLEEVE
19	377 758	1	ARM
20	376 308	1	CUBE, PIVOT - RIGHT
21	376 311	1	CUBE, PIVOT - LEFT
22	370 711	2	WING NUT 5/16-18
23	477 772	2	BALL JOINT
24	371 009	6	WASHER .391 X .62 X .06
25	321 427	4	RING, RETAINING
26	376 300	1	SQUEEGEE MOUNT
27		1	GROOVE PIN 1/8 X 1.00
28	217 972	1	KNOB
29	376 297	1	ROD, ADJUSTING
30	376 314	1	BLOCK ADJUSTING
31	376 315	1	PIN, ADJUSTING
32	377 720	1	SQUEEGEE ASSEMBLY
33	157 066	2	RING, RETAINING 3/8 EXT.
34	228 102	2	WHEEL 4.00 X .875
35	377 734	1	STRAP, OUTER
36	209 491	22	SCREW S.S. #10-24 X .625
		22	WASHER, SHAKEPROOF #10
		22	WASHER #10 SAE
37	377 767	2	BLADE, NEOPRENE
38	377 738	1	BLADE, GUM RUBBER
39	377 722	1	TOOL, SQUEEGEE
40	377 736	1	BLADE, NEOPRENE
41	377 742	1	STRIP, PLASTIC
42	377 766	2	ANGLE
43	377 313	1	HOSE ASSEMBLY, SQUEEGEE
44	478 246	1	TIE, CABLE

SEE  
TSB

396

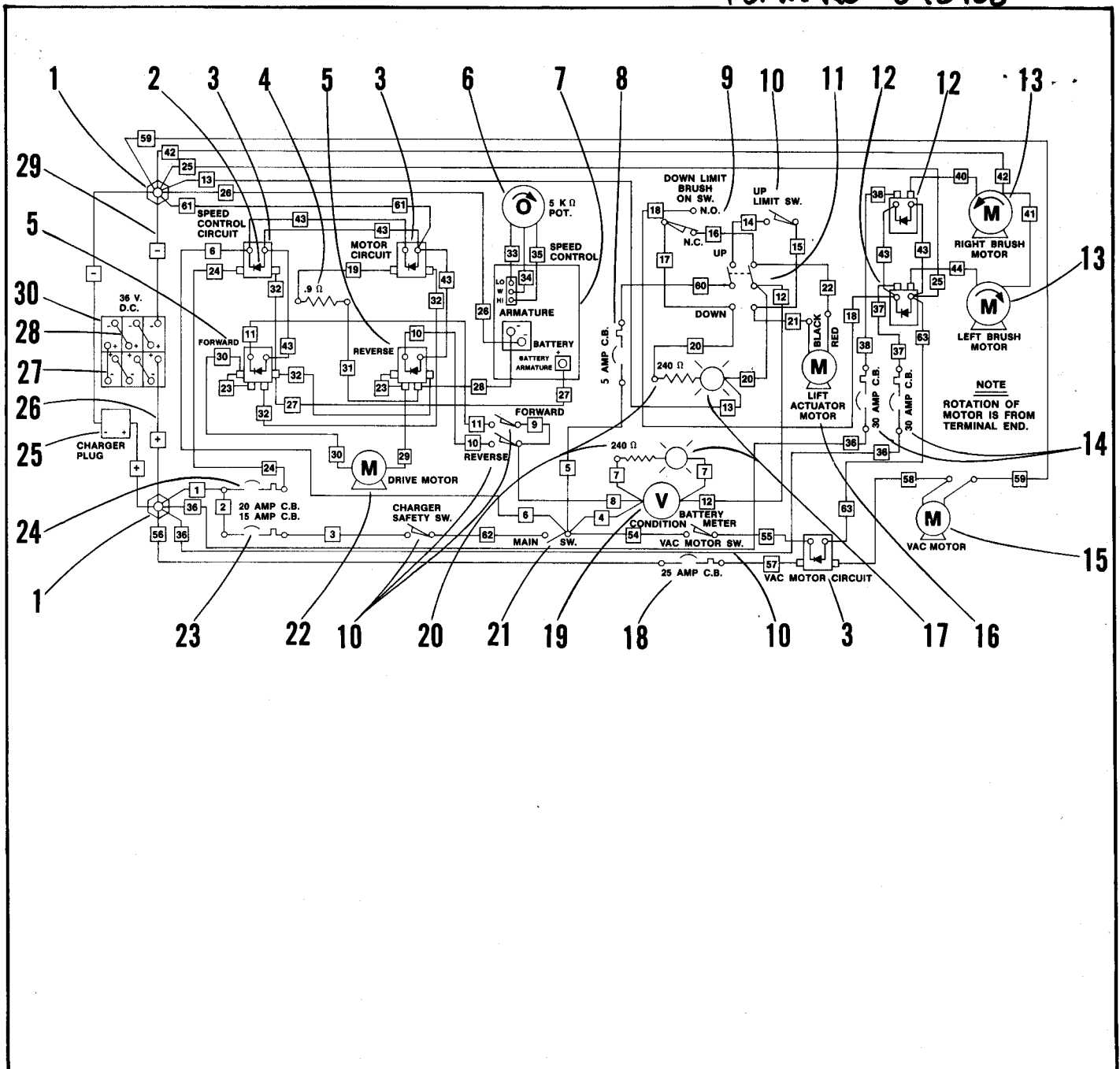
G-7



## CONTROLS & HANDLE ASSEMBLY

ITEM	PART NO	QTY	DESCRIPTION	ITEM	PART NO	QTY	DESCRIPTION
1	377 786	1	POTENTIOMETER ASSEMBLY C/O	86	387 670	1	KNOB
2	377 787	1	BRACKET	87	200 190	1	WASHER, FIBER
3	321 125	2	RING, RETAINING	88	387 668	1	STUD
4	372 624	4	BEARING, SLEEVE	89	151 851	3	BEARING, THRUST .635
5	377 797	1	SPROCKET	90	377 434	1	COLLAR
6	377 791	1	PIN	91		1	SCREW, SOC HD. #10-24 X 3/4
7		2	SET SCREW #10-24 X 3/16	92		1	PIN, SPRING 1/4 X 3/4
8	377 796	1	SPROCKET				
9	454 740	1	POTENTIOMETER 5K				
10		4	SET SCREW #10-24 X 3/16				
11		2	SCREW, HEX HD. 1/4-20 X 1/2 WITH FLANCE HEX NUT				
12		1	SCREW, PAN HD. #10-24 X 5/8				
13	377 784	1	LEVER				
14	388 580	2	TUBE, TWIST GRIP				
15	377 658	1	LEVER, SOLUTION CONTROL				
16	376 066	1	HANDLE, SOLUTION CONTROL				
17	376 486	1	GRIP, HANDLE				
18		8	SCREW, ROUND HD. #6-32 X 1"				
19	388 019	3	SWITCH, SNAP SPST NC				
20	388 576	1	BRACKET, SWITCH				
21	388 562	2	ARM, SWITCH				
22		2	SCREW, HEX HD. #10-24 X 3/8				
23	365 769	2	SPRING, EXTENSION				
24	377 436	2	PIN, HEX				
25	377 438	1	CLAMP				
26	388 543	2	GRIP, HANDLE				
27		4	SCREW, SET #10-24 X 1/4				
28	488 290	2	BALL JOINT				
29	358 560	1	SPRING, EXTENSION				
30	377 793	1	CHAIN				
31	377 662	1	TUBE, HANDLE				
32		1	NUT, HEX 1/4-20				
33		1	WASHER, SHAKEPROOF				
34		2	WASHER, FLAT 1/4				
35	151 106	2	BUSHING				
36	377 770	1	LEVER				
37	376 254	2	PIN .312 X 2.81				
38		1	SCREW, SOCKET HD. 1/4-20 X 1 1/2				
39	471 193	2	GRIP, HANDLE				
40		1	ACORN NUT #10-24				
41		1	NUT, JAM #10-24				
42	388 599	1	EYE BOLT #10-24				
43	377 002	1	CABLE, SOLUTION CONTROL				
44	377 778	1	ROD				
45		2	PIN, COTTER 1/16 X 1"				
46	232 408	1	COLLAR				
47	377 782	1	LEVER				
48	377 776	1	ACTUATOR, SWITCH				
49		1	SCREW, SOC. HD. 1/4-20 X 1 1/4 & NUT				
50		2	WASHER, FLAT 5/16				
51	377 780	1	ROD, SQUEEGEE				
52		2	SCREW, HEX HD. 1/4-20 X 1/2 W/LKW & FW				
53	376 248	4	BEARING, NYLON				
54	376 468	1	PIN				
55		2	WASHER, FLAT 1/2				
56	376 250	1	LEVER, BRAKE				
57	376 386	1	CABLE ASSEMBLY, BRAKE				
58	321 125	1	RING, RETAINING				
59	477 884	2	CLAMP, CABLE				
60		4	SCREW, FLAT HD. 1/4-20 X 7/8 W/NUT				
61	377 003	1	SWITCH, ROCKER				
62	467 410	2	LIGHT, INDICATOR				
63	448 662	1	METER, BATTERY CONDITION				
64	376 348	1	SWITCH, ROCKER				
65	454 538	1	CIRCUIT BREAKER 15A				
66	395 454	1	CIRCUIT BREAKER 20A				
67	469 788	1	CIRCUIT BREAKER 25A				
68	454 423	2	CIRCUIT BREAKER 30A				
69	387 328	1	CIRCUIT BREAKER 5A				
70	377 710	1	CHARGER PLUG ASSEMBLY C/O				
71	389 270	1	BRACKET, SWITCH				
72	388 019	1	SWITCH, SNAP SPST NC				
73	371 408	1	CHARGER PLUG				
74	373 040	2	BUSHING				
75	377 714	1	ELECTRICAL PANEL ASSEMBLY C/O				
76	376 318	1	PANEL, ELECTRICAL				
77	388 521	1	D.C. CONTROLLER				
78	395 452	3	CONTACTOR, 36V				
79	389 265	7	RECTIFIER ASSEMBLY				
80	388 534	2	SOLENOID, 36V D.C.				
81	467 470	1	RESISTOR 9 OHMS				
82	344 621	1	GROMMET				
83	469 858	2	STANDOFF, INSULATED				
84	025 363	1	DECAL, "CAUTION"				
85	395 450	2	CONTACTOR 36V				

TSB# 472,  
F-10



### ELECTRICAL SCHEMATIC

ITEM	PART NO	QTY	DESCRIPTION	ITEM	PART NO	QTY	DESCRIPTION
1	469 858	2	STANDOFF, INSULATED	22	388 510	1	DRIVE MOTOR ASSEMBLY
2	389 265	7	RECTIFIER ASSEMBLY		388 515	1	MOTOR ONLY
3	395 452	3	CONTACTOR 36 VOLT		386 263	1	CARBON BRUSH SET
4	467 470	1	RESISTOR .9 OHMS	23	454 538	1	CIRCUIT BREAKER 15 AMP
5	388 534	2	SOLENOID 36 VOLT D.C.	24	395 454	1	CIRCUIT BREAKER 20 AMP
6	454 740	1	POTENTIOMETER 5K	25	377 710	1	CHARGER PLUG ASSEMBLY
7	388 521	1	CONTROLLER, SPEED D.C. <i>TSB 472, F-10</i>		371 408	1	CHARGER PLUG - ONLY
8	387 328	1	CIRCUIT BREAKER 5 AMP	26	389 241	1	BATTERY CABLE - POSITIVE
9	388 532	1	SWITCH, SNAP SPDT	27	389 235	1	BATTERY CABLE
10	388 019	5	SWITCH, SNAP SP ST	28	389 232	4	BATTERY CABLE
11	377 003	1	SWITCH, ROCKER (VP-DOWN)	29	389 244	1	BATTERY CABLE - NEGATIVE
12	395 450	2	CONTACTOR 36 VOLT	30	376 014	6	BATTERY 6V D.C. (OPTIONAL)
13	377 010	2	MOTOR 36V D.C. 1 HP <i>TSB 515, F-9</i>				
14	454 423	2	CIRCUIT BREAKER 30A				
15	202 305	1	MOTOR, VACUUM 24 VOLT				
16	388 518	1	MOTOR, LIFT ACTUATOR				
17	467 410	2	LIGHT, INDICATOR				
18	469 788	1	CIRCUIT BREAKER 25A				
19	448 662	1	METER, BATTERY CONDITION				
20	395 404	2	RESISTOR ASSEMBLY 240 OHMS				
21	376 348	1	SWITCH, MAIN-ROCKER				

