



# Electronic Service Manuals

This electronic document is provided as a service to our customers. We do not create the contents of the information contained in this document. Should you have detailed questions pertaining to the information contained in this document, you may contact Michco, or the manufacturer which provided the original information in this electronic deliverable. Michco's only part in this electronic deliverable was the electronic assembly process.

You may contact Michco through the following methods:  
Phone (517) 484-9312 or (800) 331-3339 MI, OH, IN only  
2011 N. High St. -- Lansing, Michigan -- 48906  
Fax: (517) 484-9836  
Email: [CustServ@Michco.com](mailto:CustServ@Michco.com)  
Web site: [www.Michco.Com](http://www.Michco.Com)  
Parts Web site: [www.FloorMachineParts.Com](http://www.FloorMachineParts.Com)

Order Parts on Line at:  
**[www.FloorMachineParts.Com](http://www.FloorMachineParts.Com)**

Directly to Parts & Service:  
By Email: **[Shop@Michco.com](mailto:Shop@Michco.com)**  
By Fax: (517) 702-2041  
By Voice: Use numbers above.

**Serving the Cleaning Industry Since 1922**

Notice: All copyrighted material remains property of original owners, all trademarks are property of respective owners. Manuals are subject to Manufacturer's reproduction limitations. Originals or reproductions were provided by manufacturers through a request. We make no warranty as to the correctness of information provided in this document and you assume all risk.

# CONVERTAMATIC TRAC 280

## MODEL NO. 391300

THIS PARTS LIST IS FOR MACHINES  
AFTER SERIAL NUMBER 289092.

# PARTS LIST



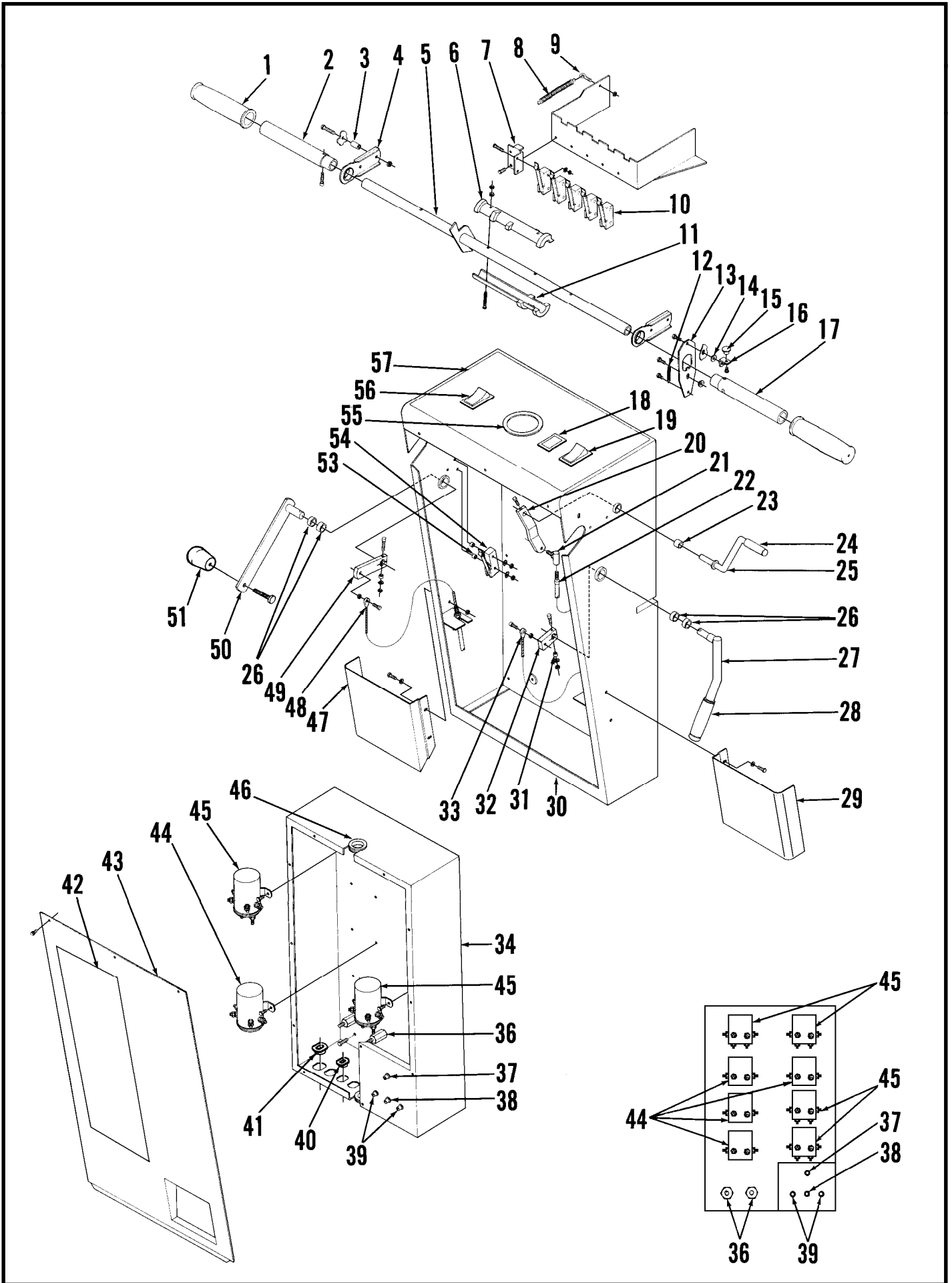
**ADVANCE**  
MACHINE COMPANY<sup>®</sup>

INTERNATIONAL HEADQUARTERS, Plymouth, MN 55447-3408  
EUROPE, Llantrisant, Pontyclun, Mid-Glamorgan CF7 8YZ Wales, United Kingdom  
CANADA, 1295 Crestlawn Drive, Mississauga, Ontario L4W 1A9



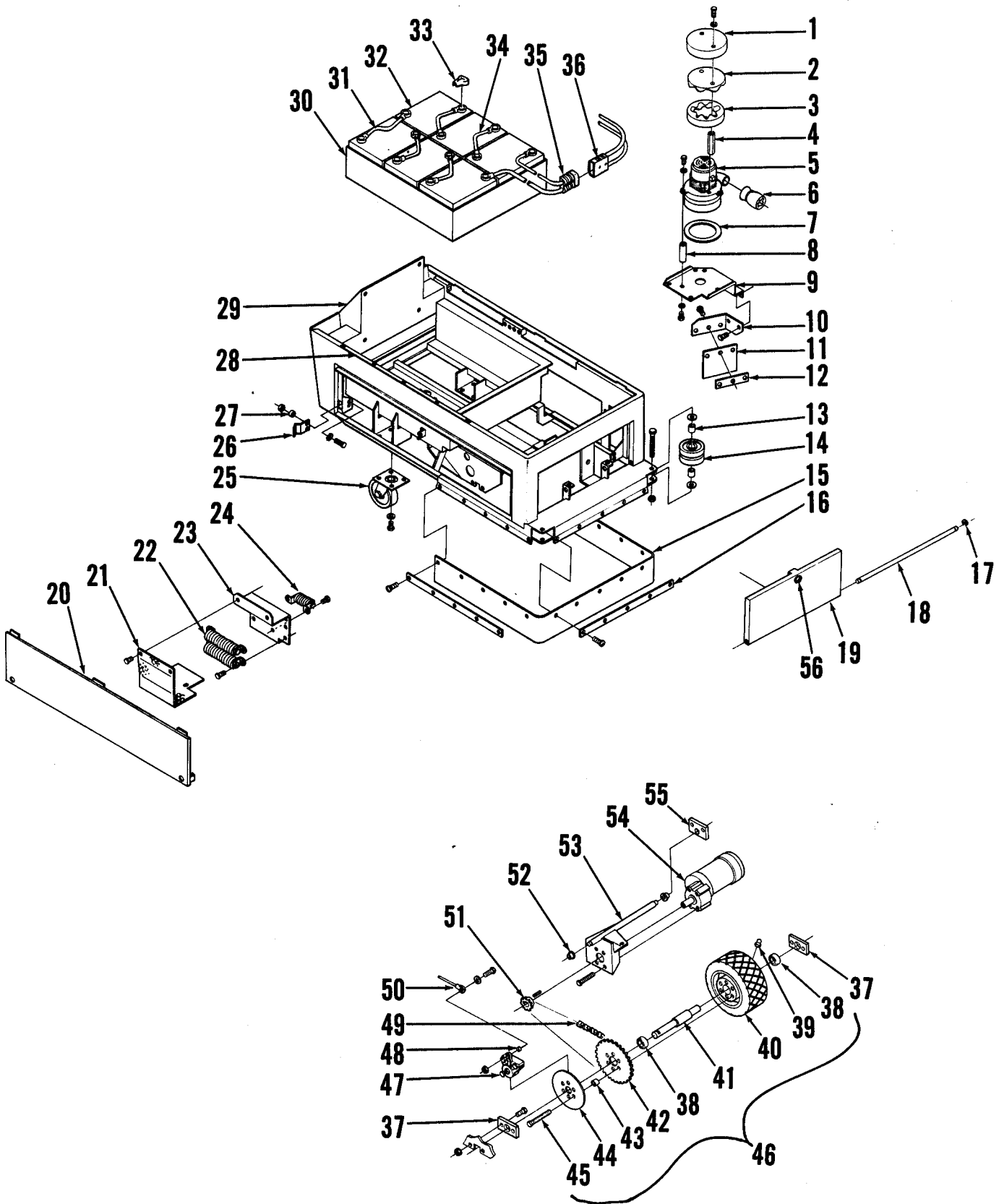
## INDEX FOR FORM NUMBER 042188

<b>Description</b>	<b>Location</b>	<b>Page</b>
Brush Drive & Lift	B5	11
Control Handle & Electrical Panel	A8	1
Miscellaneous Parts & Accessories	B9	15
Solution Valve & Tanks	A12	5
Squeegee	B3	9
Vacuum Motor (internal parts)	B7	13
Vacuum Motor, Wheels & Skirts	A10	3
Wiring Diagram A	A14	7A
Wiring Diagram B	B1	7B



## CONTROL HANDLE ASSEMBLY

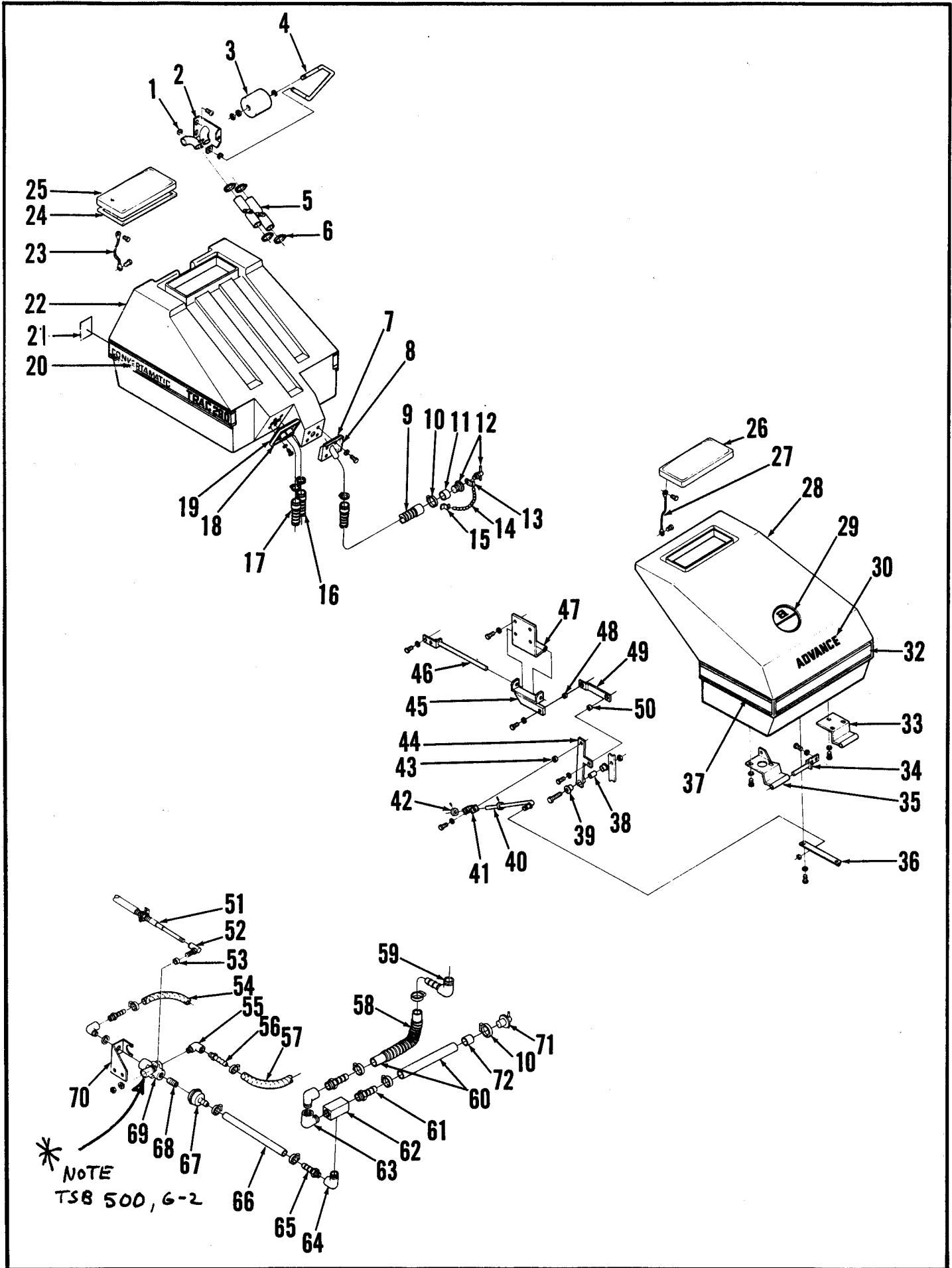
Item	Part No.	Qty	Description	Item	Part No.	Qty	Description
1	388545	2	Grip	30	391481	1	Control Panel
2	261064	1	Tube		391500	1	Control Panel Assembly
3	261066	4	Bushing	31	151092	2	Bushing
4	261097	2	Bearing	32	391504	1	Lever
5	391507	1	Tube	33	391306	1	Cable
6	391505	1	Upper Cam	34	391498	1	Electrical Panel
7	391489	5	Switch Bracket	35			<b>Omitted Intentionally</b>
8	358560	2	Spring <b>TSB 488 - G4</b>	36	469858	2	Stand-Off
9	388599	1	Eye Bolt	37	454429	1	Circuit Breaker 70A (Brush)
10	385615	5	Switch	38	387328	1	Circuit Breaker 5A (Control, Lift)
11	391506	1	Lower Cam	39	469788	2	Circuit Breaker 25A (Vacuum)
12	330178	1	Spring	40	382818	2	Strain Relief
13	391492	1	High Speed Lock	41	160512	2	Strain Relief
14	151092	2	Bushing	42	014205	1	Decal, Wiring Diagram
15	151017	1	Knob	43	391480	1	Cover Panel
16	391493	1	Tab	44	395452	4	Solenoid Contactor
17	391490	1	Tube	45	388534	4	Solenoid Contactor
18	467410	1	Indicator Light	46	391302	2	Grommet
19	376348	1	Switch	47	391835	1	Left Panel
20	391494	1	Lever	48	391305	1	Cable
21	488290	1	Ball Joint	49	391497	1	Lever
22	488292	1	Cable	50	391496	1	Squeegee Lift Lever
23	324505	1	Flange Bearing	51	364527	1	Knob
24	376486	1	Cap	52	014202	1	Decal, Squeegee (not shown)
25	391495	1	Solution Lever	53	369004	2	Bushing
26	366633	4	Bearing	54	388019	1	Switch
27	391501	1	Brake Lever	55	448677	1	Battery Meter
	014201	1	Decal, Brake (not shown)	56	377003	1	Switch
28	391311	1	Grip	57	014200	1	Decal, Control Panel
29	391834	1	Right Panel				



## CHASSIS AND DRIVE WHEEL

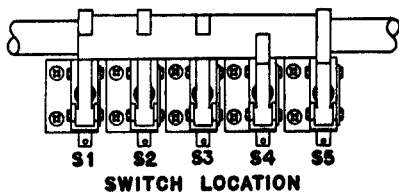
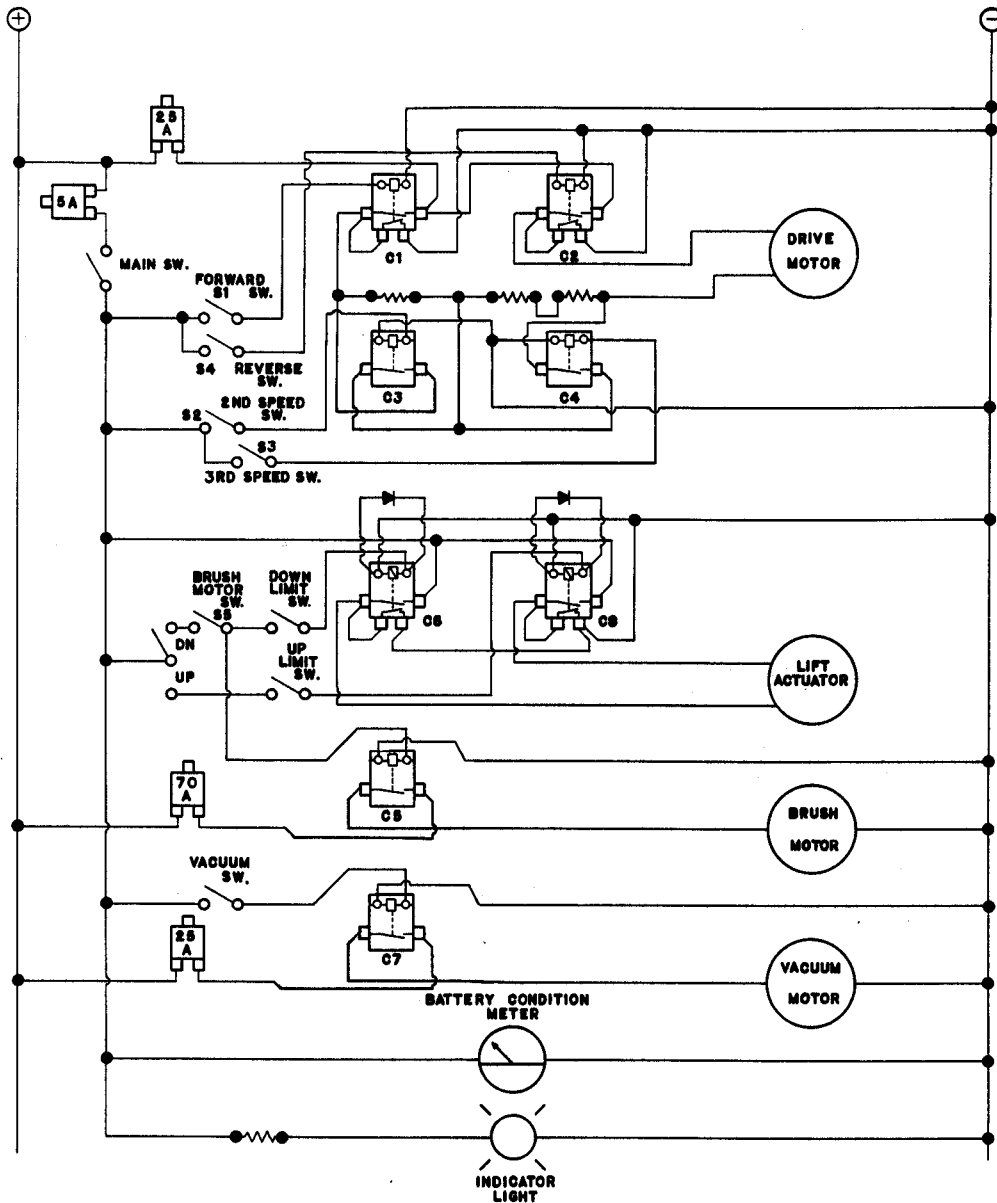
Item	Part No.	Qty	Description	Item	Part No.	Qty	Description
1	391794	1	Cover	32	376014	6	Battery, 244 Amp Hour (not included)
2	391808	1	Foam	33	372673	12	Boot
3	391809	1	Foam	34	363928	4	Battery Cable
4	391795	2	Stand-Off	35	261237	1	Connector
5	377477	1	Vacuum Motor <b>TSB 526 - F7</b>	36	391161	1	Connector
	377473	1	Carbon Brush Set for 377477	37	391536	2	Pillow Block
6	391807	1	Foam	38	378380	2	Ball Bearing
7	385437	1	Gasket	39	344362	1	Lube Fitting
8	377475	3	Stand-Off	40	376628	1	Wheel
9	391786	1	Motor Mount	41	391534	1	Axle
10	391760	1	Bracket	42	388700	1	Sprocket
11	391307	1	Blade	43	391539	6	Bushing
12	391761	1	Strap	44	391537	1	Brake Disc
13	471220	4	Bushing	45	002426	6	Screw
14	324499	4	Wheel	46	391538	1	Wheel and Axle Assembly
15	391304	1	Blade	47	391301	1	Brake Caliper
16	391762	3	Strap	48	200123	2	Bushing
17	321125	2	Retaining Ring	49	391310	1	Chain
18	391781	1	Rod	50	391306	1	Brake Cable
19	391782	1	Front Panel	51	471148	1	Sprocket
20	391838	2	Side Panel	52	111503	2	Flange Bearing
21	391805	1	Heat Shield	53	391530	1	Drive Motor Mount
22	391810	2	Resistor	54	388585	1	Drive Motor
23	391806	1	Resistor Bracket		388586	1	Carbon Brush Set for 388585 <b>TSB 506 - F11</b>
24	261221	1	Resistor	55	391535	1	Pillow Block
25	440450	2	Swivel Caster <b>TSB 510 - F10, TSB 522 - F8</b>	56	344621	1	Grommet
26	391776	5	Clip	*	372974	1	Automatic Battery Charger
27	369004	10	Bushing	*	372955	1	Semi-Automatic Battery Charger
28	391777	1	Tank Slide				
29	391400	1	Chassis				
30	261045	1	Battery Tray				
31	363936	1	Battery Cable				

\* = Optional Accessory, not shown



## TANKS AND SOLUTION VALVE

Item	Part No.	Qty	Description	Item	Part No.	Qty	Description
1	321125	3	Retaining Ring	36	391742	1	Angle
2	391719	1	Float Bracket <b>TSB 526 - F7</b>	37	014496	2	Side Decal
3	385349	1	Float <b>TSB 526 - F7</b>	38	391733	1	Bushing
4	391723	1	Rod <b>TSB 526 - F7</b>	39	185264	2	Bearing
5	391745	2	Tube <b>TSB 526 - F7</b>	40	391734	1	Rod
6	329145	7	Hose Clamp	41	391731	1	Yoke
7	391312	1	Gasket	42	331076	2	Collar
8	391712	1	Drain Adapter	43	163872	1	Bushing
9	372222	1	Drain Hose	44	391727	1	Lever
10	131601	2	Hose Clamp	45	391724	1	Bracket
11	376940	2	Tube	46	391706	2	Side Hinge Pin
12	376948	1	Plug	47	391716	2	Hinge
13	376942	2	Clip	48	321532	1	Bushing
14	753665	2	Chain	49	391732	1	Linkage
15	376944	2	Clip	50	368989	1	Bushing
16	391749	1	Hose (to Vacuum Motor)	51	488292	1	Cable
17	391747	1	Hose (to Squeegee Tool)	52	488290	1	Ball Joint
18	391709	1	Adapter	53	391774	1	Bushing
19	391313	1	Gasket	54	391802	1	Hose, Left
20	014500	2	Decal	55	742125	2	Elbow
21	014495	2	Decal	56	749202	2	Barb
22	391705	1	Recovery Tank	57	391803	1	Hose, Right
	391703	1	Recovery Tank Assembly	58	385160	1	Cover, Hose
23	325240	1	Rope	59	449877	1	Elbow
*	263379	1	Plastic Strap (new style)	60	391800	2	Hose
*	263381	1	Washer (new style)	61	743086	2	Barb
*	900186	2	Pop Rivet (new style)	62	391775	1	Tee
24	261183	1	Gasket	63	458402	2	Elbow
25	261207	1	Dome <b>TSB 533 - F6</b>	64	742125	1	Elbow
26	261204	1	Cover	65	118117	1	Barb
27	325240	1	Rope	66	391801	1	Hose
28	391702	1	Solution Tank	67	261247	1	Filter
	391700	1	Solution Tank Assembly		391830	1	Filter Screen
29	014440	1	Decal, Logo	68	749229	1	Nipple
30	014105	1	Decal, Advance	69	454612	1	Solution Valve <b>TSB 500 - G2</b>
31			Intentionally Omitted		391787	1	Solution Valve Assy <b>TSB 500 - G2</b>
32	014198	1	Front Decal	70	391780	1	Valve Bracket
33	391737	1	Left Hinge	71	260098	1	Plug
34	391735	2	Front Hinge Pin	72	261297	1	Tube
35	391740	1	Right Hinge				



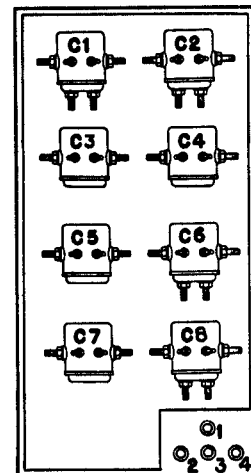
- S1 FORWARD
- S2 2ND SPEED
- S3 3RD SPEED
- S4 REVERSE
- S5 BRUSH MOTOR

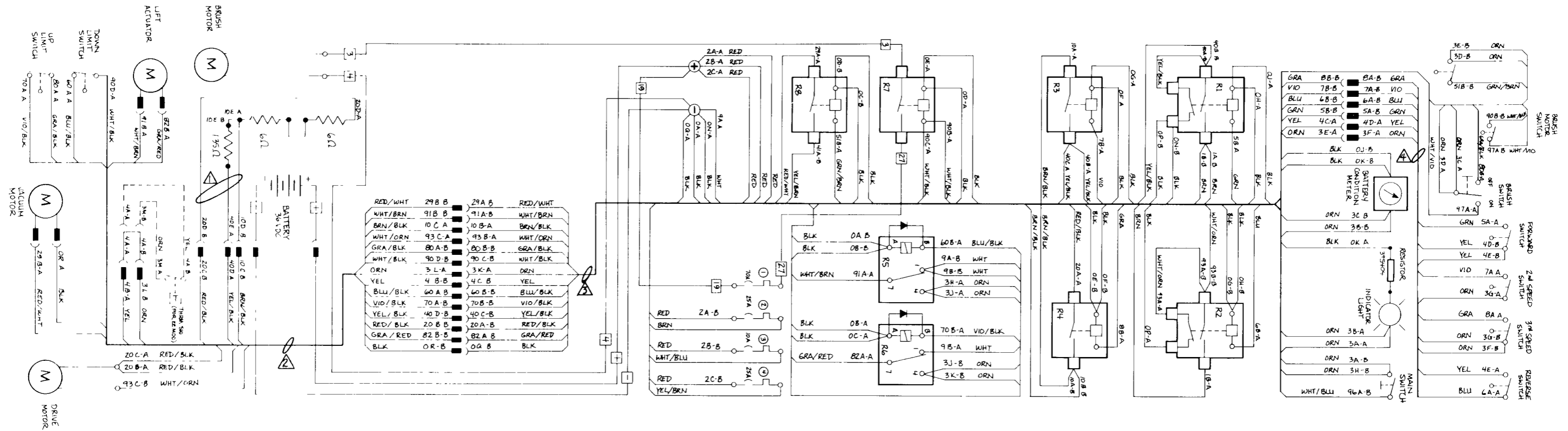
**CONTACTORS**

- C1 FORWARD
- C2 REVERSE
- C3 2ND SPEED
- C4 3RD SPEED
- C5 BRUSH MOTOR
- C6 BRUSH DOWN
- C7 VACUUM MOTOR
- C8 BRUSH UP

**CIRCUIT BREAKERS**

- 1 BRUSH MOTOR
- 2 DRIVE MOTOR
- 3 CONTROL CIRCUIT
- 4 VACUUM MOTOR





HARNESSES ASSEMBLIES

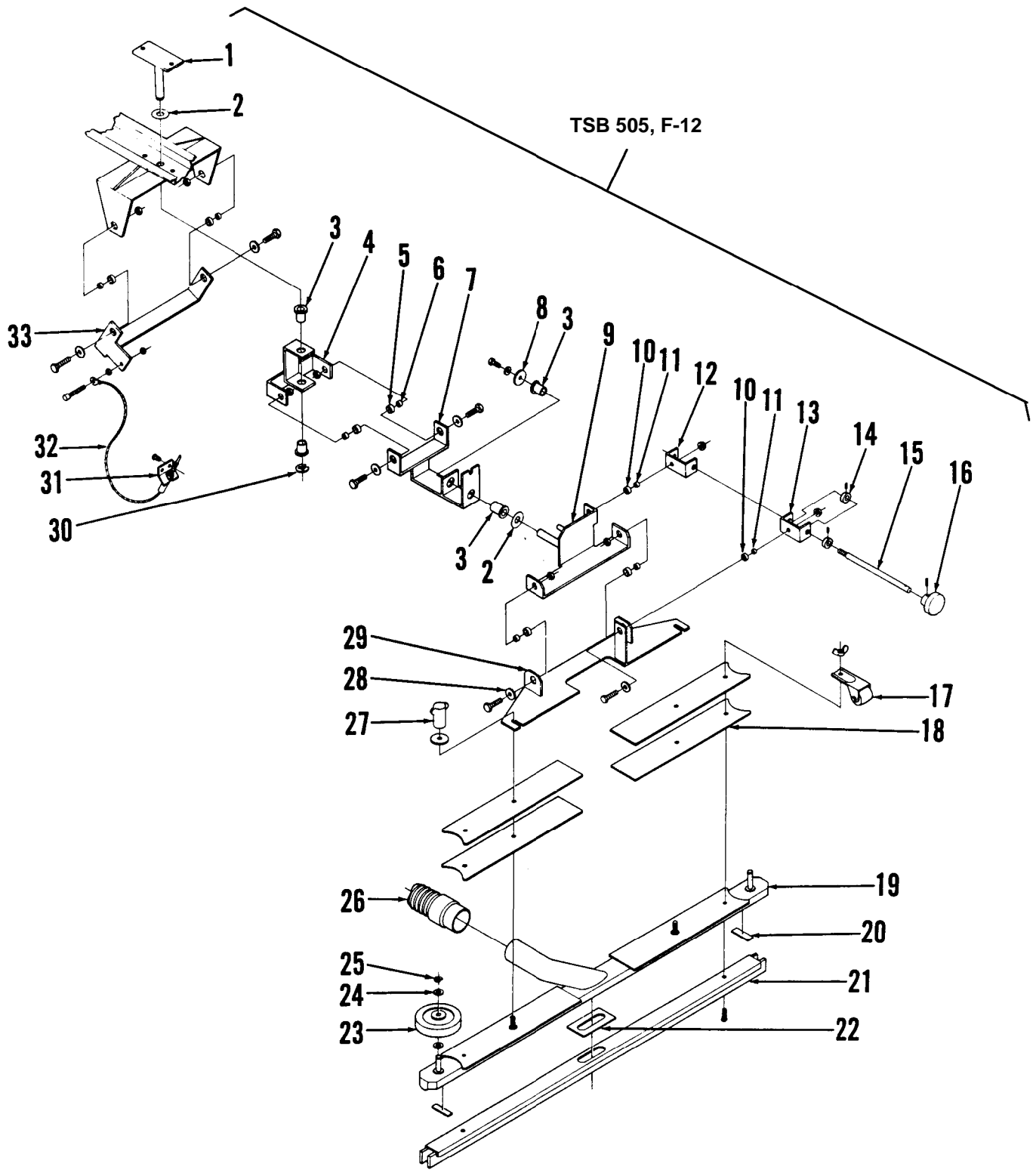
- ⚠ - 391811 RESISTOR HARNESSES
- ⚠ - 391813 MAIN HARNESSES
- ⚠ - 391814 HANDLE HARNESSES
- ⚠ - 391812 SWITCH HARNESSES

CONTACTORS, RELAYS

- R1 - 388534 FORWARD DRIVE
- R2 - 388534 REVERSE DRIVE
- R3 - 395452 2nd SPEED
- R4 - 395452 3rd SPEED
- R5 - 261219 DOWN ACTUATOR
- R6 - 261219 UP ACTUATOR
- R7 - 395452 BRUSH MOTOR
- R8 - 395452 VACUUM MOTOR

CIRCUIT BREAKERS

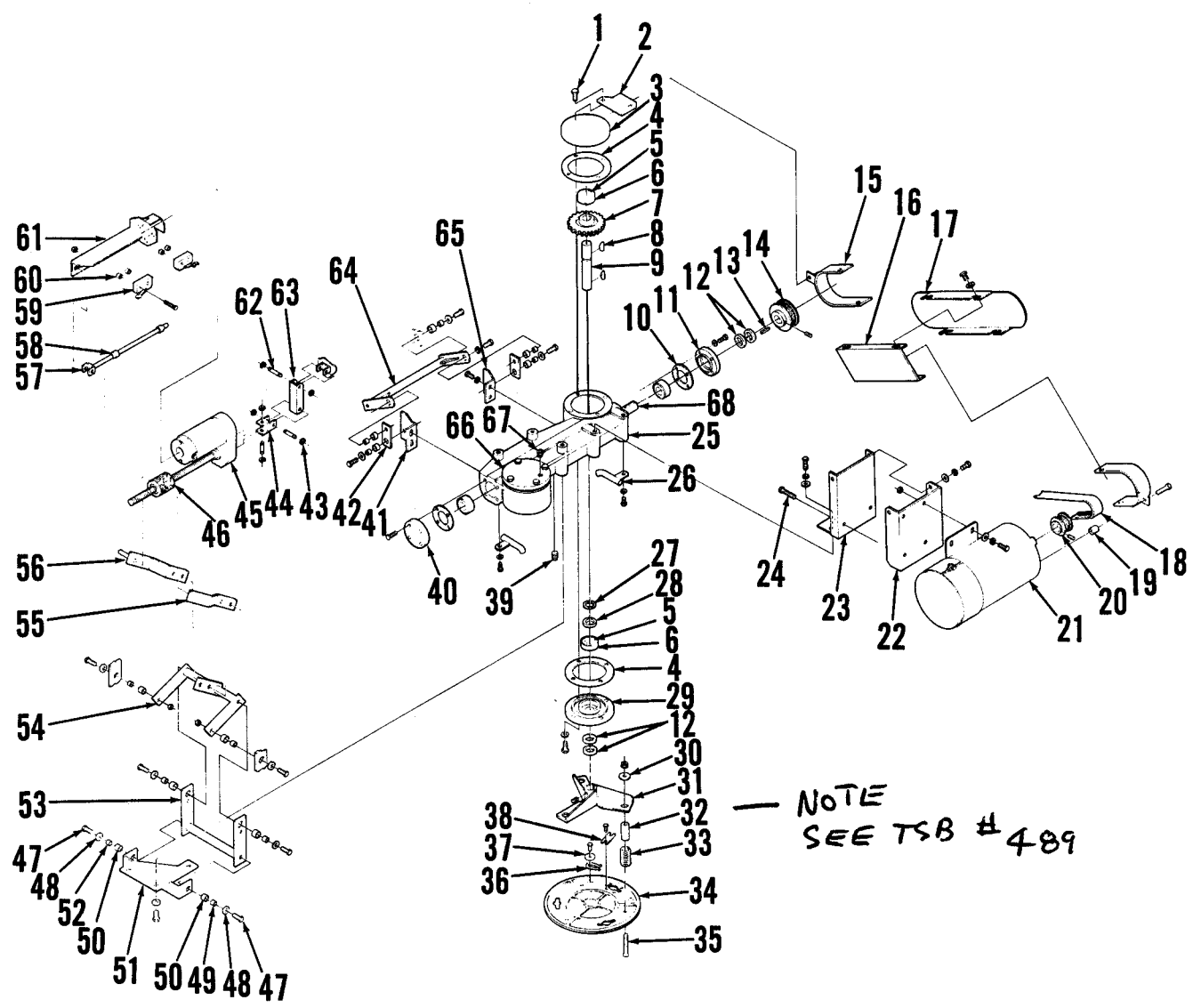
- ① - 454429 BRUSH MOTOR
- ② - 469788 DRIVE MOTOR
- ③ - 387316 CONTROL CIRCUIT LIFT MOTOR
- ④ - 469788 VACUUM MOTOR



## SQUEEGEE AND MOUNT

Item	Part No.	Qty	Description
1	391671	1	Pin Bracket
2	444839	2	Washer
3	491652	4	Flange Bearing
4	391651	1	Yoke
5	360627	6	Bushing
6	478781	6	Bearing
7	391654	1	Bracket
8	752278	1	Washer
9	391658	1	Bracket
10	185263	2	Bearing
11	320595	2	Bushing
12	391668	1	Yoke
13	391669	1	Yoke
14	331076	2	Collar
15	391670	1	Rod
16	475480	1	Knob
17	376485	2	Roller Assembly
18	377388	4	Plate
19	377382	1	Channel
	377380	1	Squeegee Tool Assembly (#17-25, 27)
20	400614	2	Gasket
21	377378	1	Squeegee Cartridge <b>TSB 590 - F1</b>
22	400613	1	Gasket
23	228102	2	Wheel
24	371009	4	Washer
25	157060	2	Retaining Ring
26	391747	1	Hose (to Recovery Tank)
27	370711	2	Thumb Nut
28	367214	6	Washer
29	391661	1	Squeegee Mount
	391650	1	Squeegee Mount Assembly (#3-16, 28, 29)
30	478775	1	Retaining Ring
31	391674	1	Bracket
32	391305	1	Squeegee Cable
33	391665	1	Lift Bracket
*	377378	1	Replacement Squeegee Cartridge <b>TSB 590 - F1</b>
*	377380	1	Squeegee Tool (complete)

\* = Optional Accessory, not shown

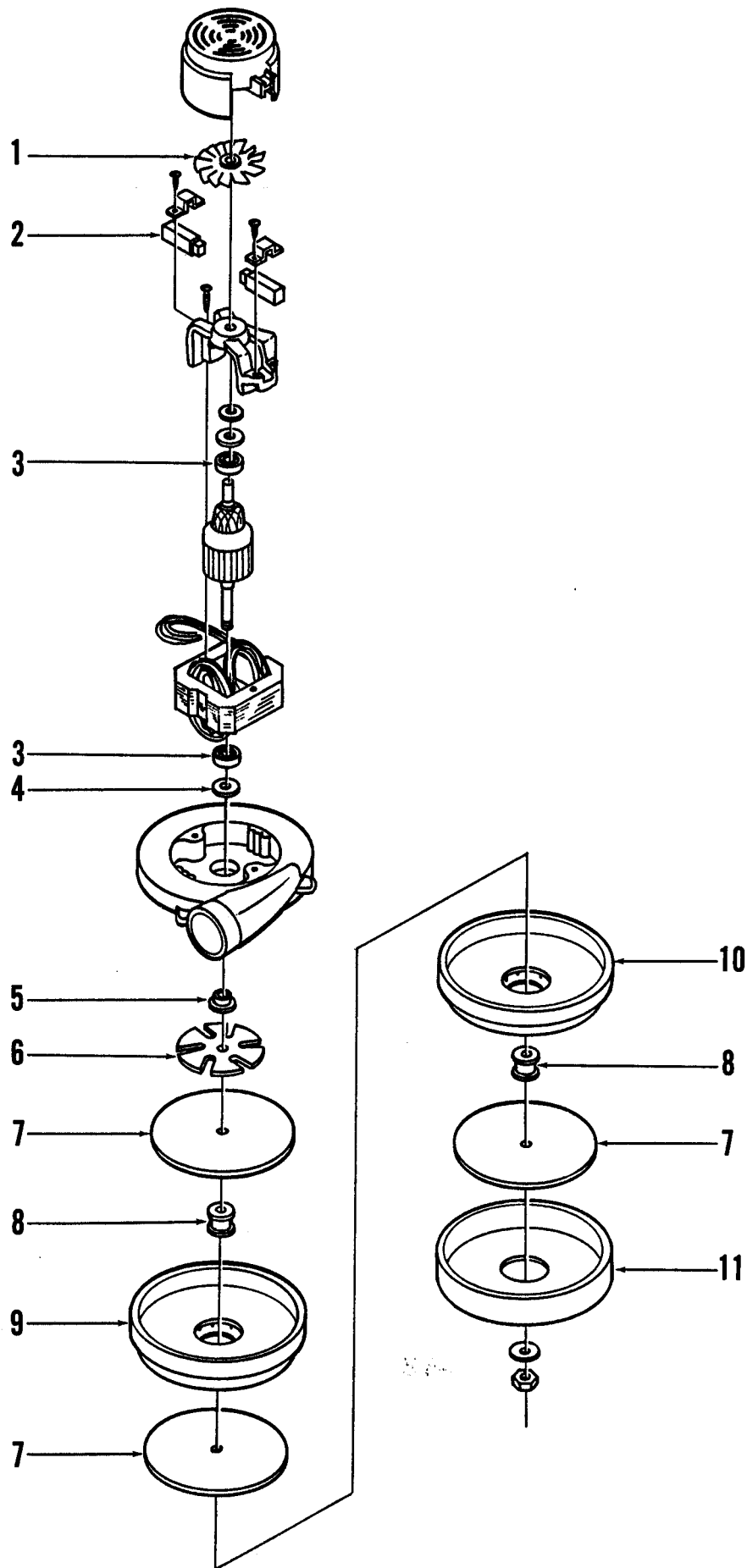


## GEAR CASE AND BRUSH DRIVE

Item	Part No.	Qty	Description	Item	Part No.	Qty	Description
1	366285	20	Bolt	39	366277	1	Plug
2	391765	1	Bracket	40	550920	1	Gear Case Cap
3	366161	1	Worm Gear Cap	41	391596	1	Left Bracket
4	366684	A/R	Shim Red	42	391586	2	Lever
	366692	A/R	Shim Blue	43	321427	6	Retaining Ring
	366706	A/R	Shim Pink	44	391608	1	Yoke
5	366323	6	Roller Bearing	45	388518	1	Gear Motor <b>TSB 540 - F4</b>
6	900072	6	Bearing Cap	*	388517	1	Carbon Brush Kit (for 388518)
7	366226	2	Worm Gear	*	470431	1	Carbon Brush Kit (for 391627)
8	366366	4	Woodruff Key	46	388520	1	Nut
9	366307	2	Worm Gear Shaft	47	001974	12	Screw
10	366722	A/R	Shim Red	48	152781	12	Washer
	366723	A/R	Shim Blue	49	320595	6	Bushing
	366730	A/R	Shim Pink	50	185263	12	Bearing
11	366129	1	Gear Case Cap	51	391593	1	Bracket
12	366331	6	Grease Seal	52	244941	6	Bushing
13	367958	2	Key	53	391587	1	Lifter Yoke
14	372889	1	Sheave	54	391577	1	Lever
15	391767	2	Bracket	55	391590	1	Lever
16	391763	1	Belt Guard	56	391613	1	Lever
17	391764	1	Belt Guard	57	391791	1	Rod
18	756048	1	Belt	58	388036	2	Collar
19	391766	1	Spacer	59	388019	2	Switch
20	391610	1	Sheave	60	162746	4	Spacer
	441719	1	Key	61	391788	1	Switch Bracket
21	392489	1	Motor	62	388672	3	Pin
	448729	1	Brush set for 392489 (set of 4)	63	391609	1	Bracket
22	391598	1	Channel	64	391581	1	Torsion Bar
23	391599	1	Bracket	65	391597	1	Right Bracket
24	002470	2	Adjusting Screw	66	366188	1	Gear Case Cap
25	391576	1	Gear Case <b>TSB 614, E-13</b>	67	366269	1	Vented Plug
	391612	1	Gear Case Assembly	68	391308	1	Shaft
26	391604	2	Pipe	**	505774	2	Prolene Scrub Brush
27	366358	2	Retaining Ring	**	505770	2	Pad Holder
28	366315	2	Spacer	**	505772	2	Dyna Grit 80 Brush
29	366218	2	Bottom Cap	**	505771	2	Magna Grit 46 Brush
30	752278	6	Washer	**	505773	2	AgLite Grit 500 Brush
31	391600	2	Drive Adapter	**	505775	2	Prolite Brush
32	391603	6	Spacer <b>TSB 489 - G3</b>	**	505776	2	Union Mix Brush
33	391303	6	Spring	**	505777	2	MidGrit 240 Brush
34	391611	2	Brush Holder	**	505778	2	MidLite 180 Brush
35	900139	6	Screw				
36	366463	2	Retaining Spring				
37	151114	2	Washer				
38	366455	2	Stop Plate				

\* = Not Shown

\*\* = Optional Accessory, not shown



**VACUUM MOTOR**

Item	Part No.	Qty	Description
	377470	1	Vacuum Motor
1	203591	1	Cooling Fan
2	377473	1	Carbon Brush (set of 2)
3	228051	2	Ball Bearing
4	203461	1	Neoprene Washer
5	372584	1	Spacer
6	372586	1	Fan
7	372588	3	Rotating Fan
8	203516	2	Spacer
9	377486	1	Stationary Fan
10	377485	1	Stationary Fan
11	377407	1	Fan Shell

## MISCELLANEOUS PARTS AND ACCESSORIES

QTY	PART NO	DESCRIPTION
1	505622	PROLENE SCRUB BRUSH/SET OF 2
1	505310	SHORT TRIM PAD HOLDER/SET OF 2
1	505623	NYLO-GRIT BRUSH/SET OF 2
1	377378	REPLACEMENT SQUEEGEE CARTRIDGE
1	377380	SQUEEGEE TOOL (COMPLETE)
1	372974	AUTOMATIC BATTERY CHARGER
1	372955	SEMI-AUTOMATIC BATTERY CHARGER