



## Electronic Service Manuals

This electronic document is provided as a service to our customers. We do not create the contents of the information contained in this document. Should you have detailed questions pertaining to the information contained in this document, you may contact Michco, or the manufacturer which provided the original information in this electronic deliverable. Michco's only part in this electronic deliverable was the electronic assembly process. By providing this manual on line we are not guaranteeing parts availability.

You may contact Michco through the following methods:

Phone (517) 484-9312 or (800) 331-3339

2011 N. High St. -- Lansing, Michigan -- 48906

Fax: (517) 484-9836

Email: [CustServe@Michco.com](mailto:CustServe@Michco.com)

Web site: [www.Michco.Com](http://www.Michco.Com)

Parts Web site: [www.FloorMachineParts.Com](http://www.FloorMachineParts.Com)

Order Parts on Line at:

**[www.FloorMachineParts.Com](http://www.FloorMachineParts.Com)**

Directly to Parts & Service:

By Email: **[Shop@Michco.com](mailto:Shop@Michco.com)**

By Fax: (517) 702-2041

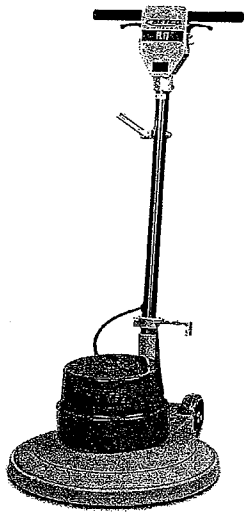
By Voice: Use numbers above.

**Serving the Cleaning Industry Since 1922**

Notice: All copyrighted material remains property of original owners, all trademarks are property of respective owners. Manuals are subject to Manufacturer's reproduction limitations. Originals or reproductions were provided by manufacturers through a request. We make no warranty as to the correctness of information provided in this document and you assume all risk. By placing these manuals on line we are not declaring our corporation to be an manufacturer authorized dealer or provider, please check our web site for authorized manufacturers we represent.

# Floor Machines

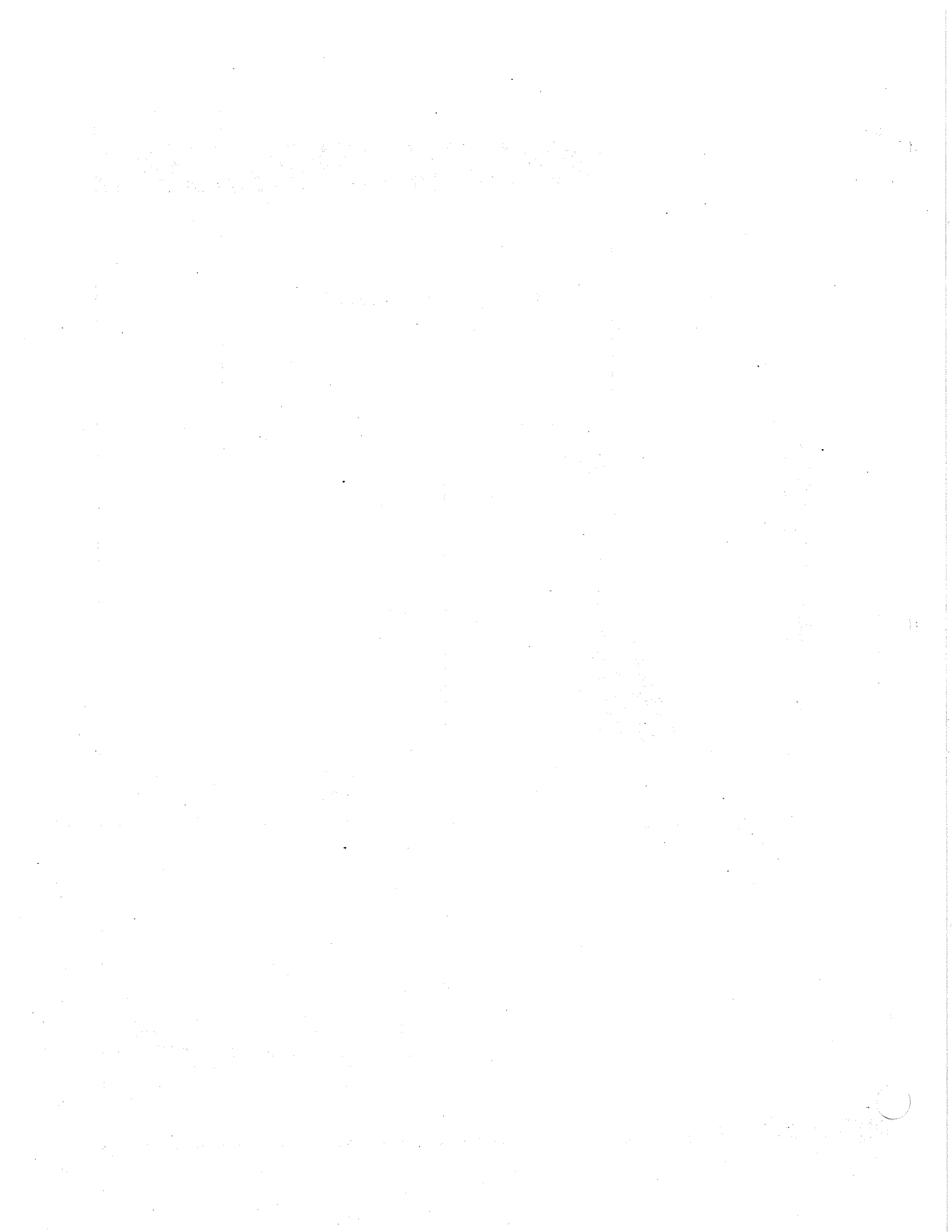
## Parts Schematic



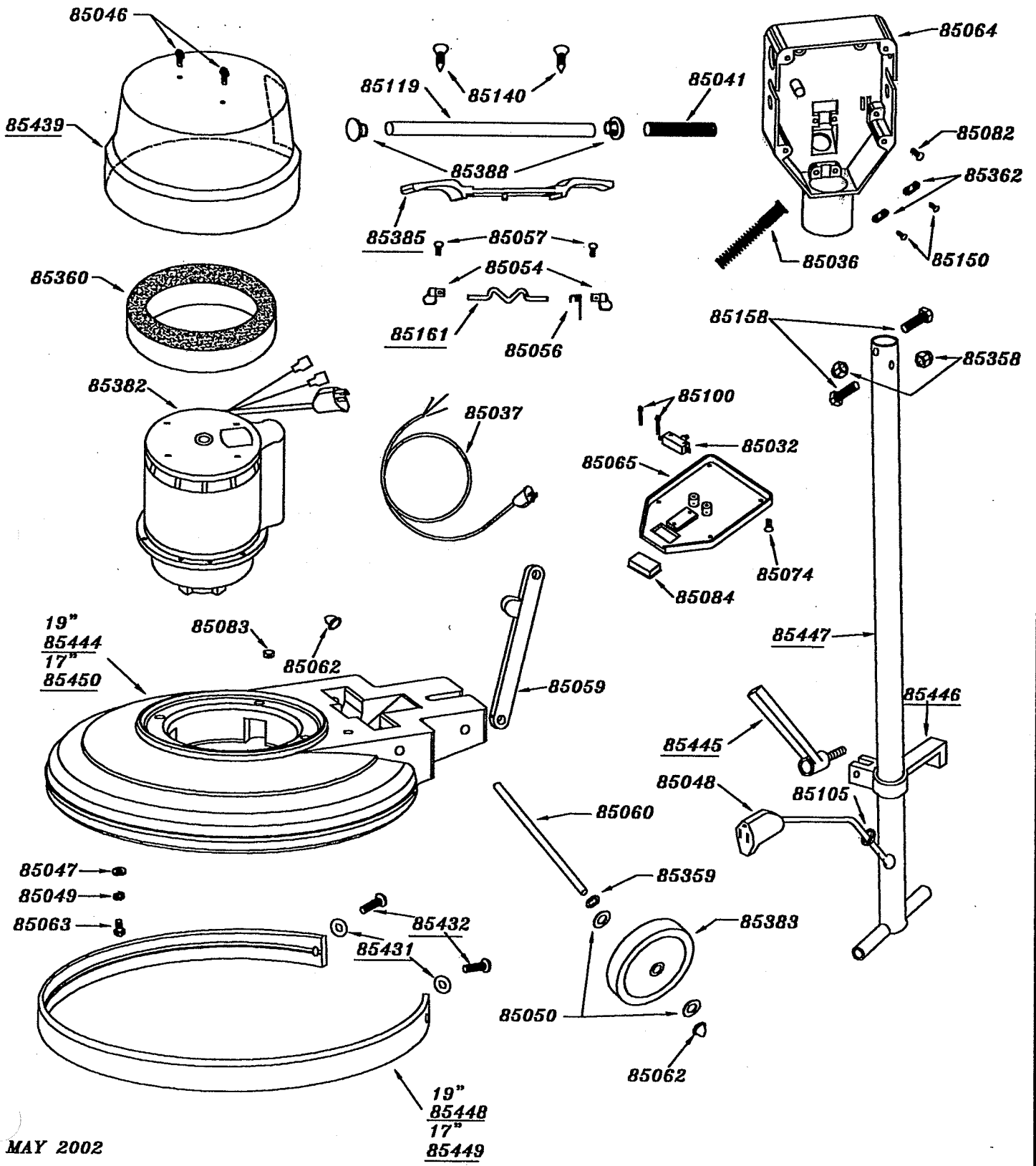
**FL17**  
**FL20**

**Item #85009**  
**Item #85010**

*Better Resources. Better Results.*  
**BETCO**<sup>®</sup>



**BETCO** BETCO TX SS 20"/17" LA 19991/  
19990



MAY 2002  
07551

ITEM	DESCRIPTION	QTY	ITEM	DESCRIPTION	QTY
85445	LOCKING HANDLE	1	85060	AXLE SHAFT PLATED	2
85444	CHASSIS-POLY 19"	1	85062	AXLE END CAPS	4
85450	CHASSIS-POLY 17"	1	85063	5/16-18 X 1 1/2 HHMS	4
85432	1/4-20 X 3/4 PHS	2	85064	SWITCH BOX PAINTED	1
85431	1/4" LG DIA. WASHER	2	85065	SWITCH BOX COVER PAINT	1
85385	TRIGGER TX	1	85074	#6-32 X 3/8 FHS - COVER	4
85161	LEVER SAFETY SWITCH	1	85082	#8-32 X 1/4 PHS	1
85449	BUMPER 17"	1	85083	PLUG	1
85448	BUMPER 19"	1	85084	SWITCH INSERT	1
85447	HANDLE TUBE LA PLATED	1	85100	#6-32 X 7/8 PHS	2
85446	CORD HOOK CLAMP LA PTD	1	85105	GROMMET 3/8"	1
85439	MOTOR COVER -TX RED SS	1	85119	HANDLE TUBE	1
85032	MICRO SW 1 1/2 HP	1	85140	#14-1 1/2 TYPE A SCREW	2
85036	ANTI-KINK SPRING	1	85150	8-32 X 1/2 TAPTITE PHILLIPS	4
85037	CORD ASSEMBLY 14/3 X 50'	1	85158	1/4-20 X 3/4 HHMS	2
85041	HANDLE GRIP FOAM	2	85358	1/4-20 NYLOC NUT	2
85046	#10-24 X 1/2 PHS	2	85359	1/2 TENSION WASHER TW8	2
85047	5/16 FLAT WASHER	4	85360	SHROUD FILTER SM WET	1
85048	PIGTAIL FEMALE 42 IN.	1	85362	CORD GRIP	2
85049	5/16 SPRING LOCKWASHER	4	85382	MOTOR 1 HP - SS	1
85050	1/2 IN. NYLON WASHER	4	85383	WHEEL 5in. FLOOR MACHINE	2
85054	KNOB SAFETY SWITCH	2	85388	HANDLE TUBE PLUG	2
85056	SPRING SAFETY SWITCH	1			
85057	#6-32 X 1/4 PHS	2			
85059	HANDLE BRACE PAINTED	1			

MAY 2002 / 07551