



## Electronic Service Manuals

This electronic document is provided as a service to our customers. We do not create the contents of the information contained in this document. Should you have detailed questions pertaining to the information contained in this document, you may contact Michco, or the manufacturer which provided the original information in this electronic deliverable. Michco's only part in this electronic deliverable was the electronic assembly process. By providing this manual on line we are not guaranteeing parts availability.

You may contact Michco through the following methods:

Phone (517) 484-9312 or (800) 331-3339

2011 N. High St. -- Lansing, Michigan -- 48906

Fax: (517) 484-9836

Email: [CustServe@Michco.com](mailto:CustServe@Michco.com)

Web site: [www.Michco.Com](http://www.Michco.Com)

Parts Web site: [www.FloorMachineParts.Com](http://www.FloorMachineParts.Com)

Order Parts on Line at:

**[www.FloorMachineParts.Com](http://www.FloorMachineParts.Com)**

Directly to Parts & Service:

By Email: **[Shop@Michco.com](mailto:Shop@Michco.com)**

By Fax: (517) 702-2041

By Voice: Use numbers above.

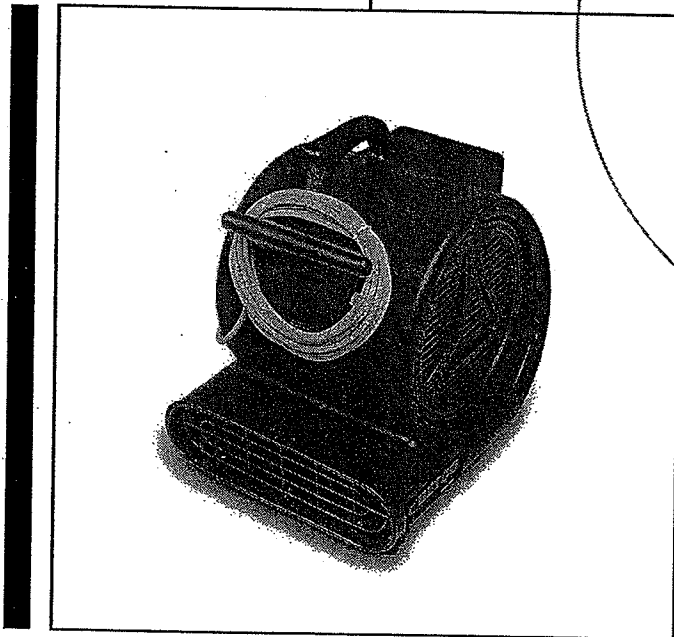
**Serving the Cleaning Industry Since 1922**

Notice: All copyrighted material remains property of original owners, all trademarks are property of respective owners. Manuals are subject to Manufacturer's reproduction limitations. Originals or reproductions were provided by manufacturers through a request. We make no warranty as to the correctness of information provided in this document and you assume all risk. By placing these manuals on line we are not declaring our corporation to be an manufacturer authorized dealer or provider, please check our web site for authorized manufacturers we represent.

# FiberPRO® Floor Dryer

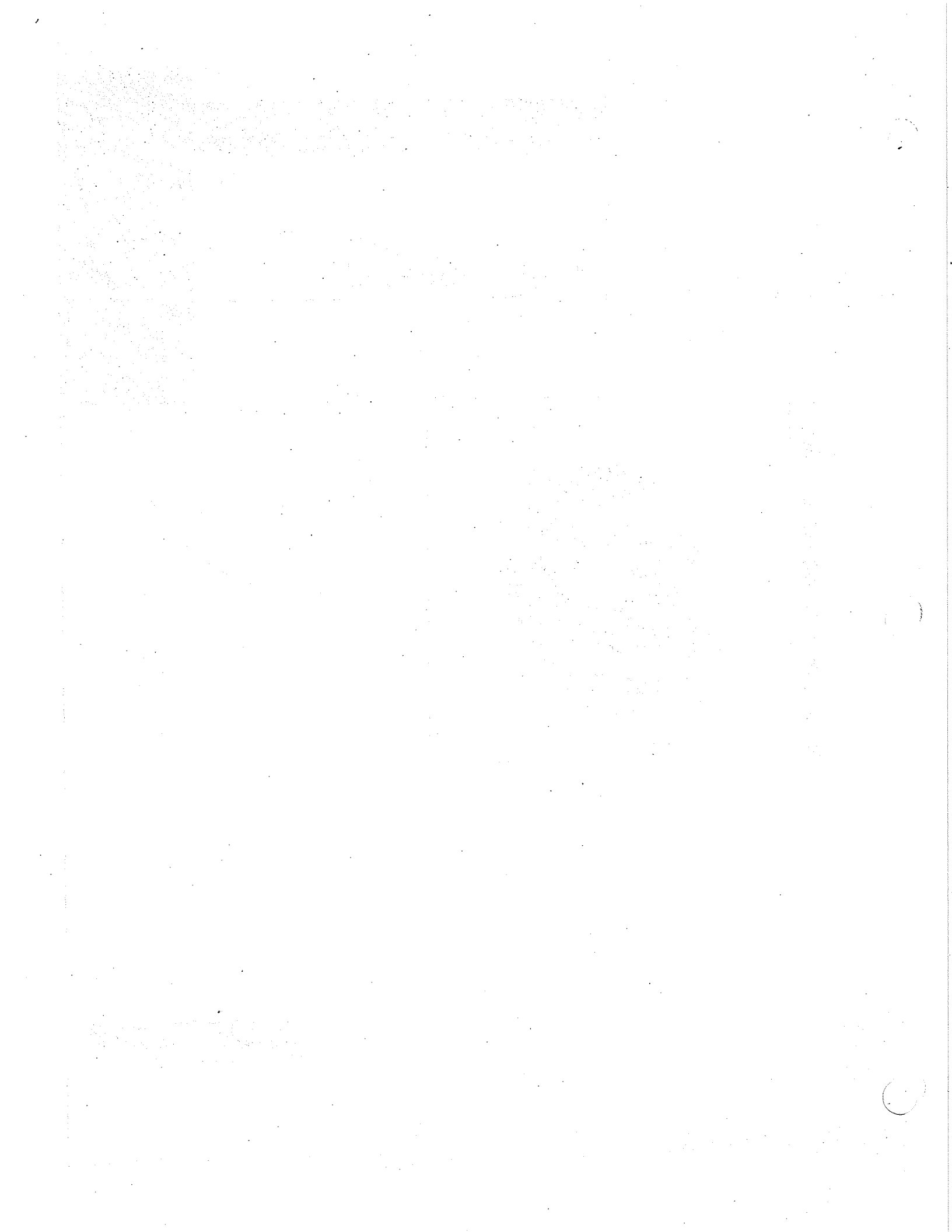
## Parts Schematic

Item #85507-00



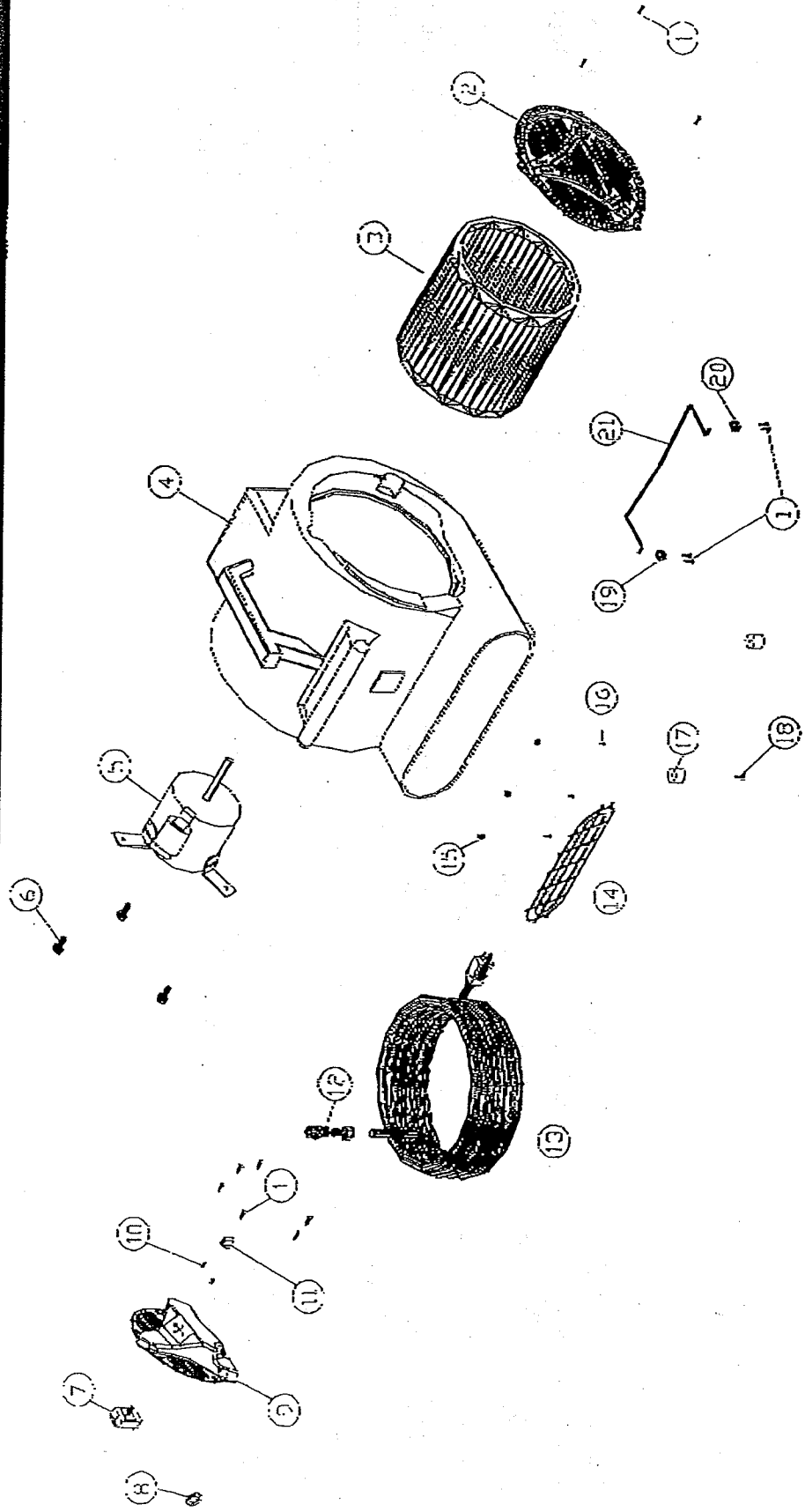
*Chemicals*  
*Equipment*  
*Programs*  
*Process*

**BETCO®**



# 85507 D2500

## ASSEMBLY



ref #	part #	description
1	X6261	screw #6 x 1/2 phil pan type a
2	X8872	intake panel
3	85660	squirrel cage w/locknut 1/3-1/2 hp modles
4	X8873	squirrel cage w/locknut 3/4 hp model
5	X8876	dryer housing
5	X8882	dryer motor and capacitor 1/3 hp model
6	X8881	dryer motor and capacitor 1/2 hp model
6	X8868	dryer motor and capacitor 3/4 hp model
7	X8864	screw 3/8-16 x 1/2
7	X8897	switch
8	83215	nut, lock, 1/2" steel conduit
9	X8875	motor control panel

ref #	part #	description
10	X8903	M4x6 flat head phillips screw
11	85786	knob switch
12	83203	strain relief 1/2" npt
13	X8926	25' heavy duty 3 wire cord
14	X8870	dryer discharge
15	X8256	nut 8-32 lock w/nylon insert
16	X8278	screw 8-32 x 1/2 phil pan
17	PD38	foot, black rubber, new style
18	X8221	screw 8-32 x 3/4 phil pan
19	X8928	right tilt stand foot
20	X8929	left tilt stand foot
21	X8874	kickstand
	X8990	handle and wheels